

**GENERAL NOTE:**

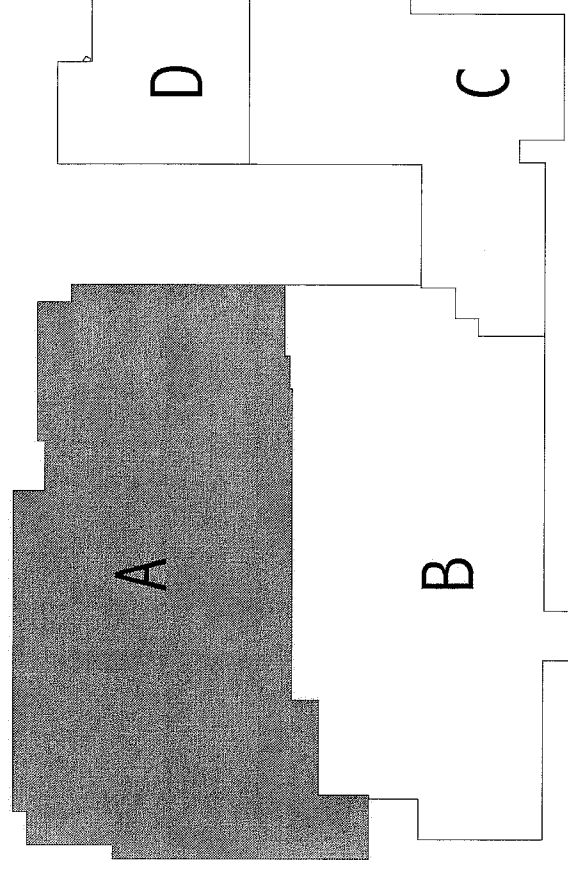
1. REFER TO GRID FOR PROJECT GENERAL NOTES, ABBREVIATIONS AND SYMBOL LEGEND.

**REFLECTED CEILING NOTES:**

1. UNLESS INDICATED OTHERWISE, CEILING GRID SPACING IS 12" X 12".
2. UNLESS INDICATED OTHERWISE, CEILING GRID SPACING IS 12" X 12".
3. UNLESS INDICATED OTHERWISE, CEILING GRID SPACING IS 12" X 12".
4. REFER TO ROOM SCHEDULE FOR CEILING HEIGHTS AND CEILING TYPES TO BE PROVIDED.
5. THE SPACING SHALL BE CENTER TO CENTER UNLESS OTHERWISE NOTED.
6. THE SPACING SHALL BE CENTER TO CENTER UNLESS OTHERWISE NOTED.

**SYMBOLS LEGEND:**

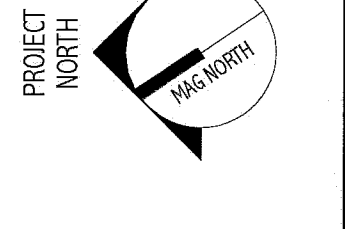
- 2X2 SUSPENDED CEILING PANEL AND GRID ASSEMBLY
- GRID CEILING
- 24" X 24" AC IN LIGHT FIXTURE
- 24" X 24" AC IN LIGHT FIXTURE
- 14" LIGHT FIXTURE
- FLOUORESCENT STRIP FIXTURE
- DOWN LIGHT
- CEILING MOUNTED DOWN LIGHT
- RETURN AIR GRILLE
- SUPPLY AIR GRILLE
- EXHAUST AIR GRILLE
- SPRINKLER HEAD
- CEILING MOUNTED SPARKER
- CEILING MOUNTED SMOKE DETECTOR
- CABLE CLAMP AND TRUCK
- PENDANT LIGHT FIXTURE
- LINEAR LIGHT FIXTURE
- CLOSED ACCESS PANEL
- CONTROL JUNCTION
- EXISTING CEILING TO REMAIN



REV.	DATE	DESCRIPTION
4-24-09		

**ISSUED FOR CONSTRUCTION**  
4-24-09

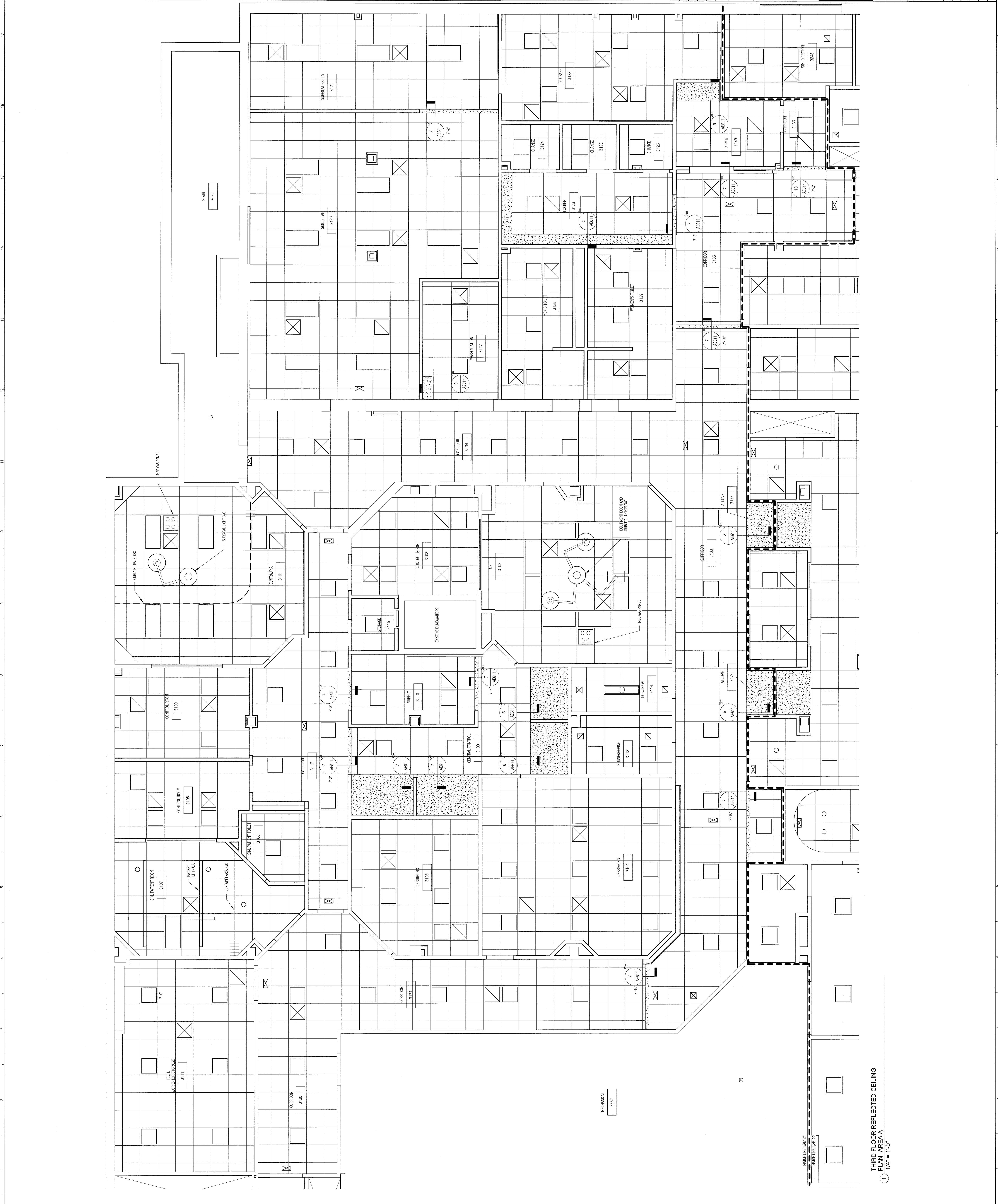
CURRENT ISSUE STATUS:



161 Pine Street, Box 618  
Portland, Maine 04101  
Tel: (207) 777-3846  
Fax: (207) 777-3846  
www.smri.com

**SMRI**  
Maine Medical Center - Office of Medical Education

PROJECT NAME:	THIRD FLOOR REFLECTED CEILING PLAN-A
DATE:	4-24-09
PROJECT NUMBER:	0803
PROJECT SHEET:	AE121



THIRD FLOOR REFLECTED CEILING  
PLAN-AREA A  
1/4" = 1'-0"