

EQUIPMENT AND ACCESSORIES SCHEDULE

NO.	DESCRIPTION	PROVIDE	REQ.	DESCRIPTION	PROVIDE	REQ.	DESCRIPTION	PROVIDE
1	WIRING UP 3/4"	CC	(1)	BULLETIN BOARD 3/4"	OV	(2)	BRACKET STANDARDS	CC
2	SNIP PAPER	CC	(2)	FULL-HEIGHT PAPER	CC	(2)	DATA SCREEN TV	CC
3	PAPER TRAY DISPENSER	CC	(3)	LOCKERS - THREE-TIER (5 TOTAL, 12 1/2" H x 24" W)	CC	(3)	PROJECTION SCREEN - (66" MOUNTED)	CC
4	TOILET PAPER DISPENSER	CC	(4)	GLASS BOX - (CONTRACTOR LOCATION NUMBER)	OV	(4)	CHEST DRAWER PLUMBING (REQUIRED)	CC
5	4" CHAIR BAR	CC	(5)	HAND SANITIZER - (CONTRACTOR LOCATION NUMBER)	OV	(5)	POUCH	OV
6	3/4" CHAIR BAR	CC	(6)	WALL MOUNTED - (CONTRACTOR LOCATION NUMBER)	OV	(6)	STIMULATOR REFERENCE TRACK	OV
7	HOOK (ON WALL)	CC	(7)	COMPETITIVE	OV	(7)	TVS	OV
8	PROTECTIVE WALL COUPLER, SEE ELEVATIONS	CC	(8)	WINDOW (ON PLAN)	OV	(8)	PHOTOCOPIER - (PHOTOCOPIER)	OV
9	FURNITURE W/ WASTE CONTAINER	CC	(9)	GRASS LENS	OV	(9)	EQUIPMENT BOARD	OV
10	SHOULDER CHAIR BAR	CC	(10)	MISC. SEE ELEVATIONS	CC	(10)	HIGHWAY - (SHOULDER BOARD)	OV

NOTE: CONTRACTOR TO PROVIDE BLOCKING, CORNER AND DATA WALL WHERE REQUIRED FOR OTHER PROVIDED EQUIPMENT. CONTRACTOR SHALL COORDINATE EQUIPMENT WITH OWNERS.

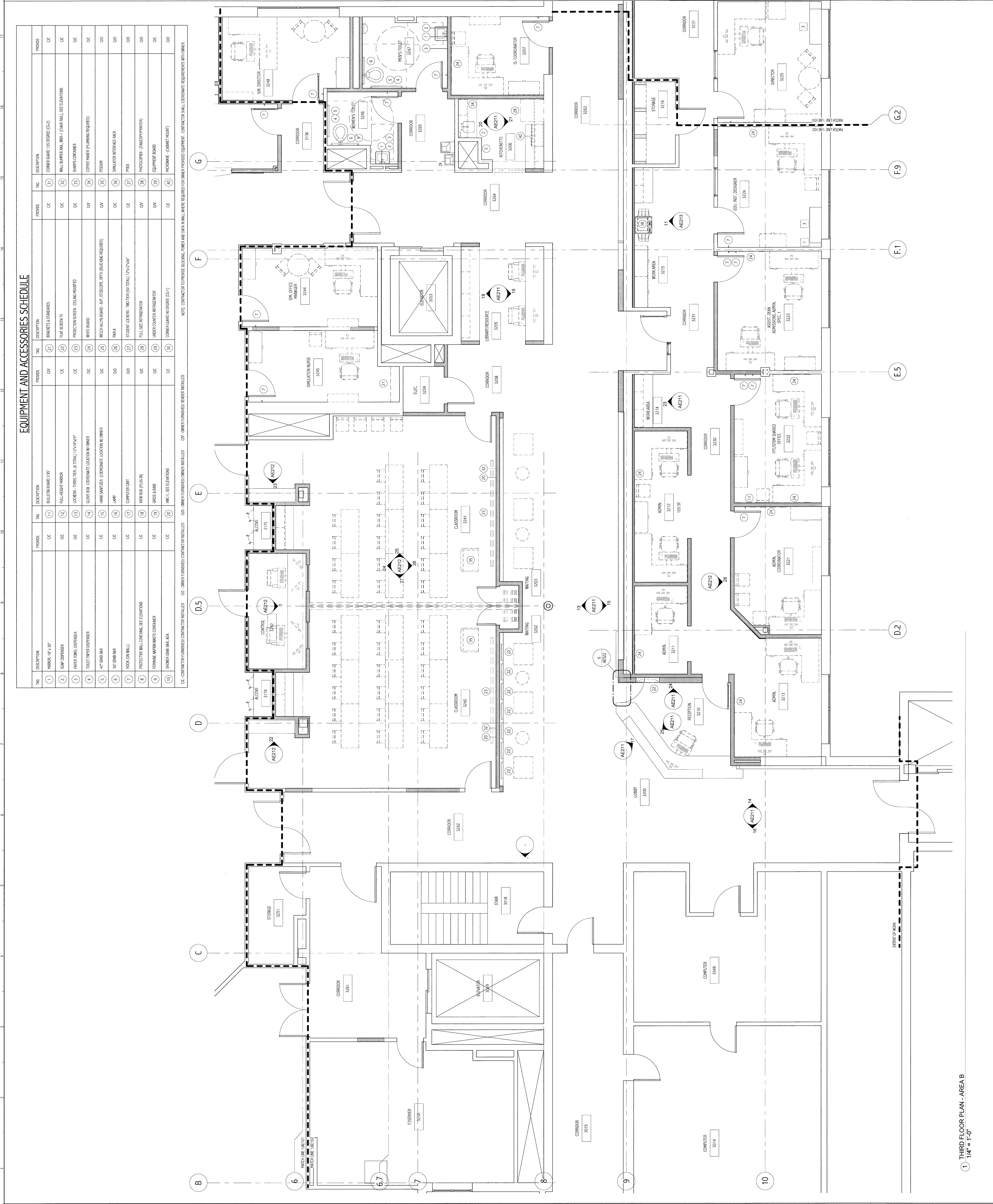
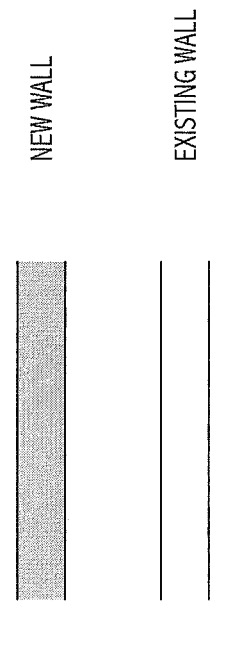
GENERAL NOTES:

- SEE SHEET 0201 FOR LEGEND AND ABBREVIATIONS.
- FURNITURE LAYOUTS IN THIS SECTION ARE INDICATED FOR COORDINATION. PROVIDE FURNITURE LAYOUTS FOR ALL MOUNTED EQUIPMENT, INCLUDING EQUIPMENT AND ANY OTHER ACCESSORIES.
- ALL WORKER PROVIDED EQUIPMENT SHALL BE INSTALLED BY OTHERS.

KEYED NOTES:

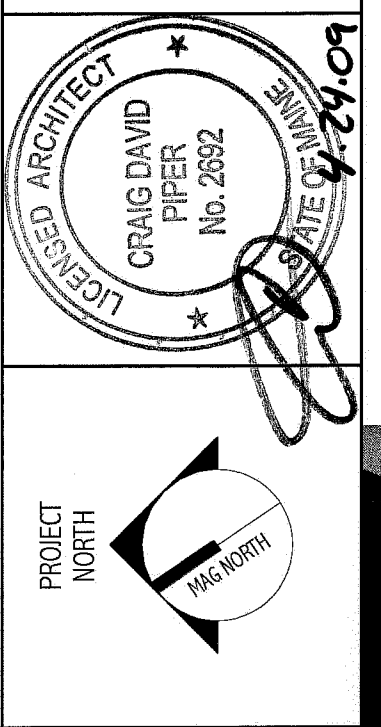
1. HANG SIGNAGE BY MECHANICAL CONTRACTOR.
2. PROVIDE BLOCKING FOR MOUNTED EQUIPMENT WALL MOUNTED EQUIPMENT. COORDINATE WITH FURNITURE OWNER.
3. SEE THE INCL. INT.

LEGEND:



1 THIRD FLOOR PLAN - AREA B
1/4" = 1'-0"

ISSUED FOR CONSTRUCTION
4-24-09



SMART
Maine Medical Center - Office of Medical Education

THIRD FLOOR PLAN - AREA B

SCALE:	A - Vertical	DATE:	4-24-09
PROJECT NUMBER:	000	GRAPHIC SCALE:	0' 1"
DESIGN NUMBER:	000	DATE:	4-24-09
PROJECT NAME:	000	SHEET NO.:	AE102