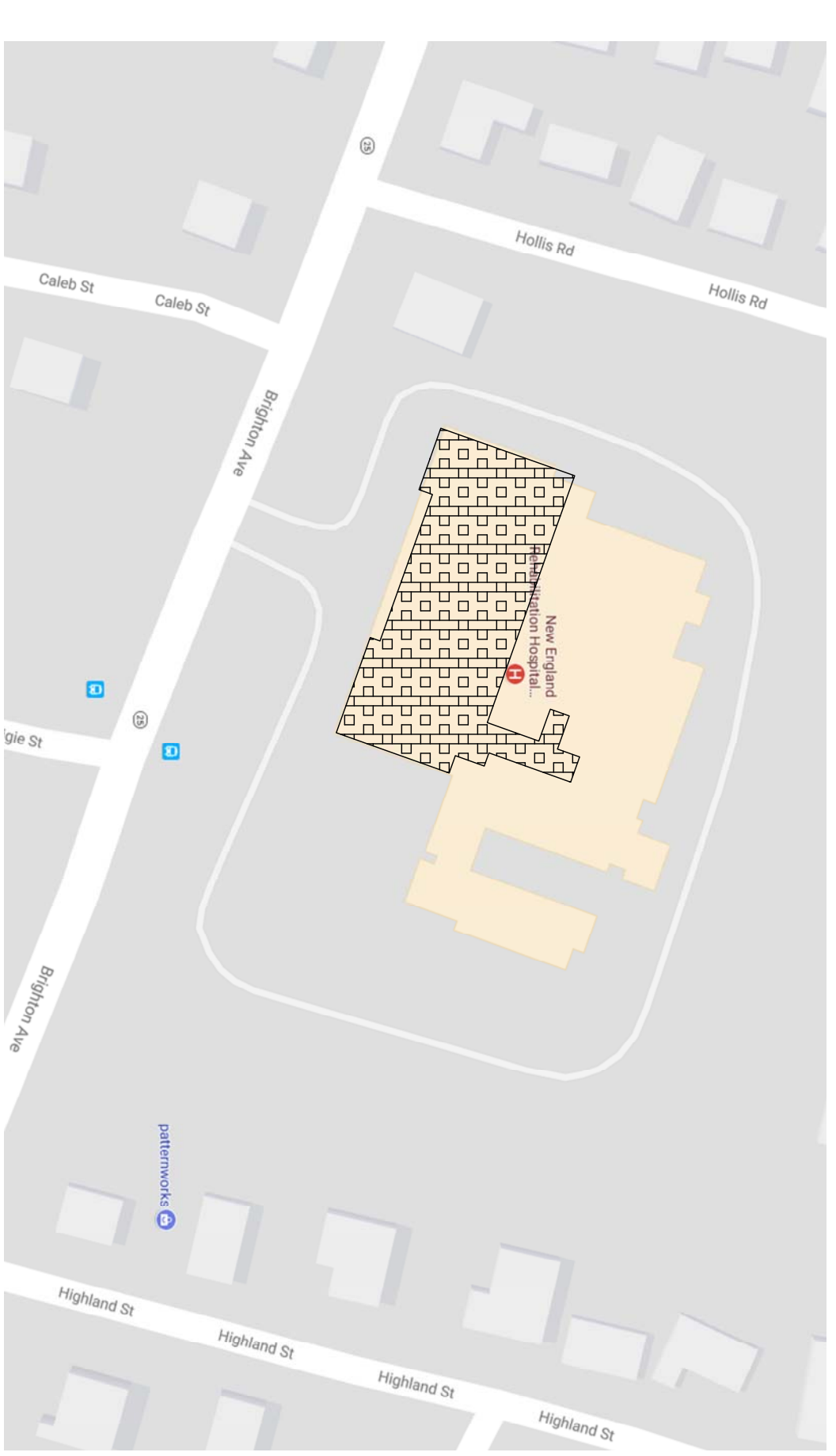
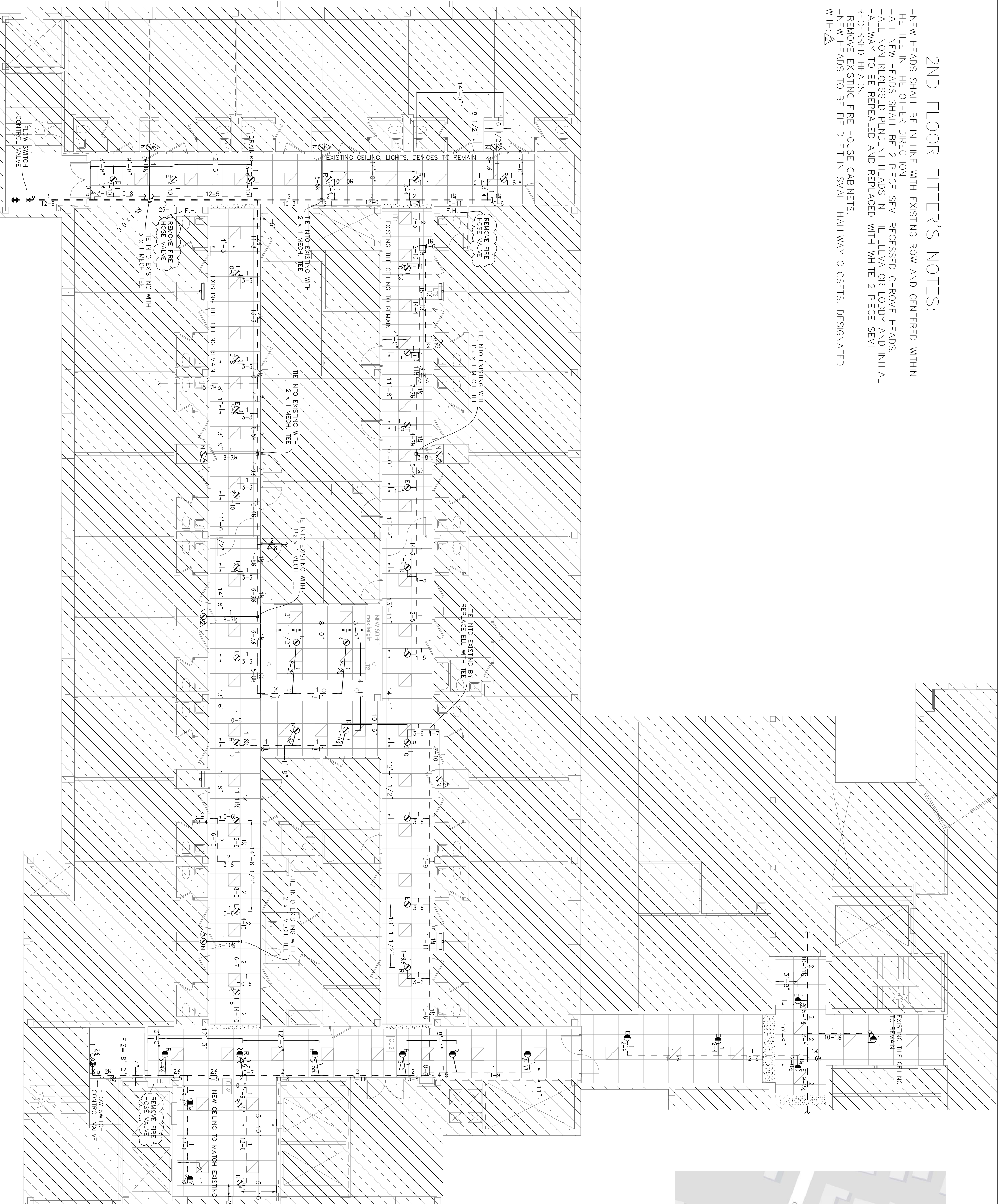


SITE MAP:



2ND FLOOR FITTER'S NOTES:

- NEW HEADS SHALL BE IN LINE WITH EXISTING ROW AND CENTERED WITHIN THE TILE IN THE OTHER DIRECTION.
- ALL NEW HEADS SHALL BE 2 PIECE SEMI RECESSED CHROME HEADS.
- ALL NON RECESSED PENDENT HEADS IN THE ELEVATOR LOBBY AND INITIAL HALLWAY TO BE REPEALED AND REPLACED WITH WHITE 2 PIECE SEMI RECESSED HEADS.
- REMOVE EXISTING FIRE HOUSE CABINETS.
- NEW HEADS TO BE FIELD FIT IN SMALL HALLWAY CLOSETS. DESIGNATED WITH:



LEGEND:

- EXISTING HEAD TO REMAIN
- RELOCATED HEAD
- NEW HEAD
- SEMI-RECESSED HEAD WHITE
- SEMI-RECESSED HEAD CHROME
- RISE OR DROP
- GROOVED RIGID COUPLING
- CEILING HEIGHT
- HANGER
- HATCHED AREA NOT IN SCOPE.
- EXISTING COVERAGE TO REMAIN.
- FINISHED FLOOR TO PIPE CENTERLINE
- CEILING TO PIPE CENTERLINE
- CONCRETE DECK TO PIPE CENTERLINE
- CONNECT TO EXISTING
- CTE

GENERAL NOTES:

ALL 1" THREADED PIPE IS TO BE DOMESTIC SCH. 40 BLACK STEEL.
 ALL THREADED PIPE FITTINGS ARE TO BE DOMESTIC BLACK CAST IRON, CLASS 125.
 PIPE LENGTHS SHOWN ON THREADED PIPE ARE CENTER TO CENTER UNLESS NOTED.

SYSTEM CLASSIFICATION:

THE WET PIPE SYSTEM OF AUTOMATIC SPRINKLERS IS DESIGNED IN ACCORDANCE WITH NFPA-13, STANDARD FOR THE INSTALLATION OF SPRINKLER SYSTEMS, 2016 EDITION.
 LIGHT HAZARD OCCUPANCY.

SCOPE OF WORK:

ONE FOR ONE HEAD RELOCATION OF THE EXISTING WET PIPE SYSTEM OF AUTOMATIC SPRINKLERS IN THE 1ST AND 2ND FLOORS PER NEW CEILING AND CONSTRUCTION PLAN. SYSTEM IS DESIGNED IN ACCORDANCE WITH NFPA-13, STANDARD FOR THE INSTALLATION OF SPRINKLER SYSTEMS, 2016 EDITION.
 22 EXISTING HEADS TO REMAIN
 56 HEADS TO BE RELOCATED
 10 NEW HEADS TO BE INSTALLED

HEAD LEGEND:

- 40 RELIABLE MODEL F1FR56 RECESSED PENDENT
- 155 QUICK RESPONSE, STANDARD COVERAGE CHROME, K=5.6, 1/2" NPT, SIN RA1414
- 13 RELIABLE MODEL F1FR56 RECESSED PENDENT
- 155 QUICK RESPONSE, STANDARD COVERAGE WHITE, K=5.6, 1/2" NPT, SIN RA1414

FIRE PROTECTION SUBCONTRACTOR: DEAN & ALLYN, INC.
 STATE OF MAINE CONTRACTOR'S LICENSE NUMBER F5C262
 EXPIRATION DATE: JUNE 30, 2019

DEAN & ALLYN, INC.
 FIRE PROTECTION • SPECIAL HAZARD

116 LEWISTON ROAD, GRAY, MAINE 04039
 207/657-5646 FAX 207/657-5647

SCALE	DATE	APPROVED BY	DATE	APPROVED BY	DATE	APPROVED BY	DATE	APPROVED BY	DATE	REVISIONS
SCALE 3/8"=1'-0"										
SCALE 1/8"=1'-0"										
SCALE 3/16"=1'-0"										
SCALE 1/4"=1'-0"										
SCALE 3/8"=1'-0"										
SCALE 1/2"=1'-0"										
SCALE 3/8"=1'-0"										
SCALE 1/8"=1'-0" U/N										

DATE	APPROVED BY	TITLE	JOB	CONTRACT WITH	REV.
9/26/17	ZIG	DRAWN BY	BMC NEW ENGLAND REHAB	HERBERT CONSTRUCTION	0
9/26/17	ZIG	CHECKED BY	335 BRIGHTON AVENUE	9 GOULD ROAD LEWISTON, MAINE 04240	1
		AT DEAN & ALLYN, INC	PORTLAND, ME 04102		2
		SCALE 1/8"=1'-0" U/N			3
		SHEET NO. 2 OF 2			4
					5
					6
					7
					8
					9
					10
					11
					12
					13
					14
					15
					16
					17
					18
					19
					20
					21
					22
					23
					24
					25
					26
					27
					28
					29
					30
					31
					32
					33
					34
					35
					36
					37
					38
					39
					40
					41
					42
					43
					44
					45
					46
					47
					48
					49
					50
					51
					52
					53
					54
					55
					56
					57
					58
					59
					60
					61
					62
					63
					64
					65
					66
					67
					68
					69
					70
					71
					72
					73
					74
					75
					76
					77
					78
					79
					80
					81
					82
					83
					84
					85
					86
					87
					88
					89
					90
					91
					92
					93
					94
					95
					96
					97
					98
					99
					100