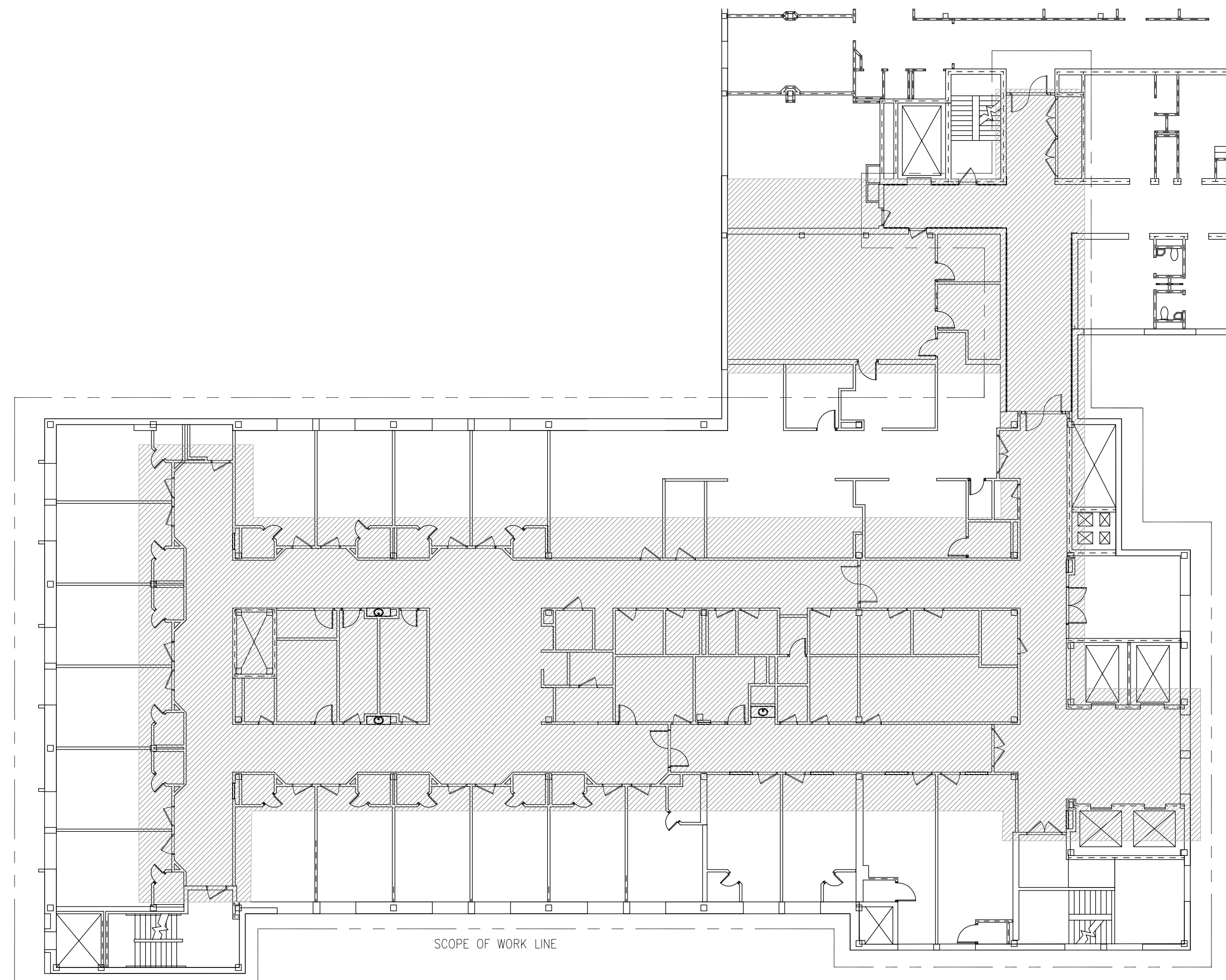
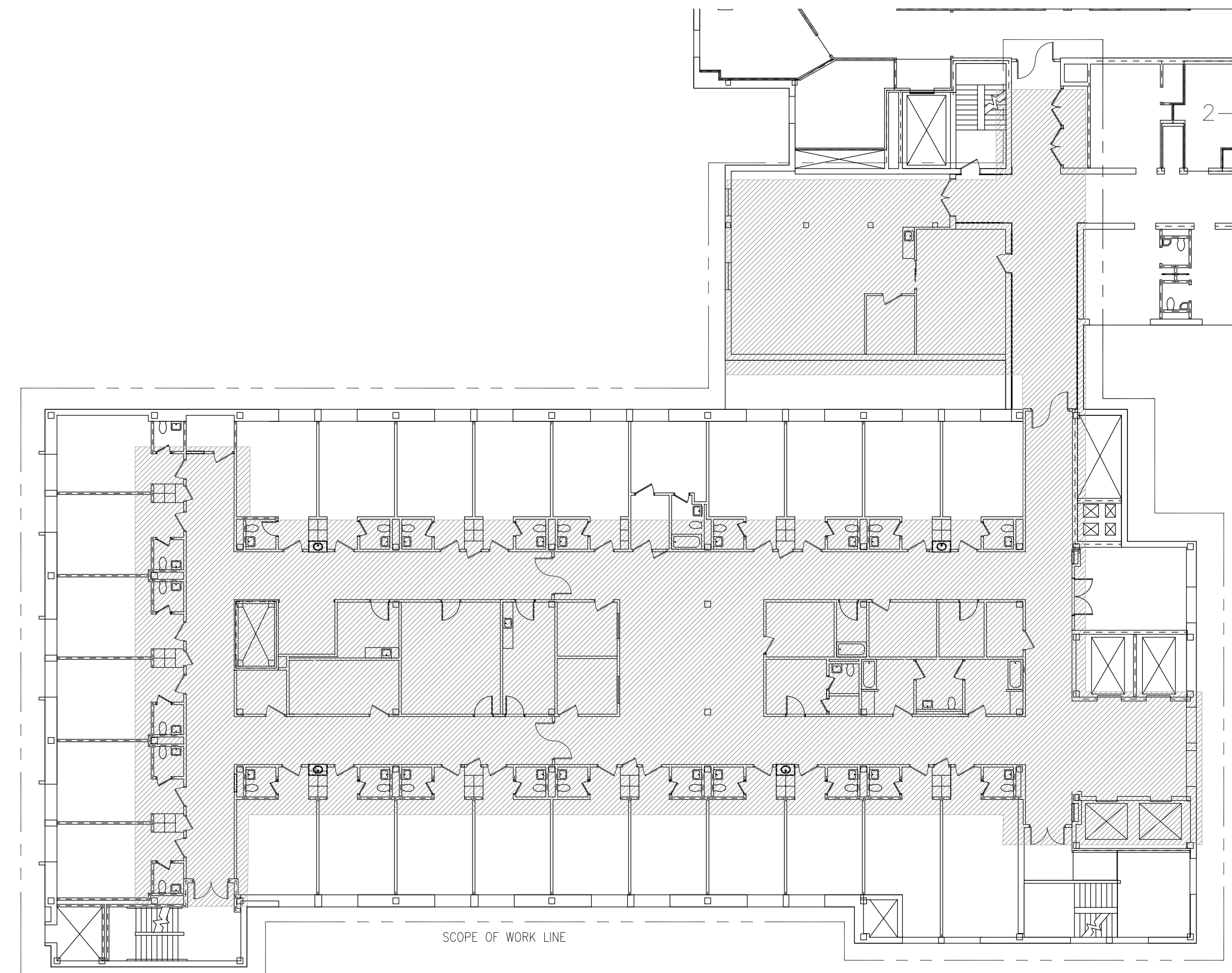


NEW ENGLAND REHABILITATION OF PORTLAND

HEALTHSOUTH CORRIDOR UPDATES



KEY PLAN - FLOOR 1
SCALE: 1/16" = 1'-0"



KEY PLAN - FLOOR 2
SCALE: 1/16" = 1'-0"

HEALTHSOUTH, OWNER
Joseph E. Durkin, CHFM
Regional Director of Facilities
HEALTHSOUTH Rehabilitation Hospital
254 Pleasant Street
Concord, NH 03301
Phone: 603-226-9839

Maine Medical Center
MaineHealth
LANDLORD
RICHARD SPICER
SUPERVISOR OF PLANT OPS
MAINE MEDICAL CENTER
22 BRAMHALL ST.
PORTLAND, ME

HEBERT CONSTRUCTION
GENERAL CONTRACTOR
HEBERT CONSTRUCTION
9 GOULD RD
LEWISTON ME 04240

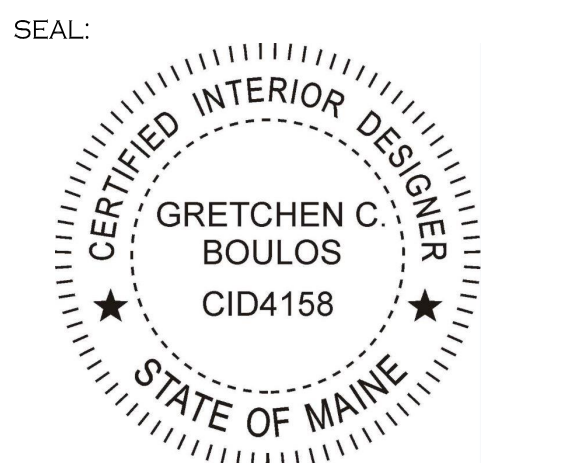
DRAWING INDEX

ARCHITECTURAL

- A0 COVER SHEET
- D1.1 DEMOLITION PLAN - FLOOR 1
- D1.2 DEMOLITION PLAN - FLOOR 2
- D2.1 DEMOLITION CEILING- FLOOR 1
- D2.2 DEMOLITION CEILING- FLOOR 2
- A2.1 CONSTRUCTION PLAN- FLOOR 1
- A2.2 CONSTRUCTION PLAN- FLOOR 2
- A4.1 REFLECTED CEILING PLAN- FLOOR 1
- A4.2 REFLECTED CEILING PLAN- FLOOR 2
- A5.1 WALL FINISH PLAN- FLOOR 1
- A5.2 WALL FINISH PLAN- FLOOR 2
- A6.1 ELEVATIONS - FLOOR 1
- A6.2 ELEVATIONS- FLOOR 2
- A6.3 MILLWORK CABINETRY FLOORS 1 AND 2
- A7.1 MILLWORK- RECEPTION DESK FLOOR 1
- A7.2 MILLWORK- RECEPTION DESK FLOOR 2
- A8.1 FLOORING PLAN- FLOOR 1
- A8.2 FLOORING PLAN- FLOOR 2
- ~~A8.3 (REMOVED)~~
- A9 DOOR SCHEDULE
- A10 DETAILS
- A11 DETAILS
- ~~A12 DETAILS~~



DESIGNER:
BOULOS
COMMERCIAL
DESIGN, PLLC
1 CANAL PLAZA SUITE 500
PORTLAND ME 04101
www.bouloscommercialdesign.com
207-749-1795



OWNER:
HEALTHSOUTH
NEW ENGLAND REHABILITATION
HOSPITAL OF PORTLAND
335 Brighton Avenue,
Portland, ME 04102

LANDLORD:
Maine Medical
Center
335 Brighton Avenue,
Portland, ME 04102

GENERAL CONTRACTOR
HEBERT
CONSTRUCTION
9 Gould Road
Lewiston, ME 04240

REVISIONS:
DELTA: DATE:
1 07-06-2017

TITLE:
COVER SHEET

SCALE: 1/8" = 1'-0"
DATE: 01-19-2017

FLOORS 1 & 2

A0