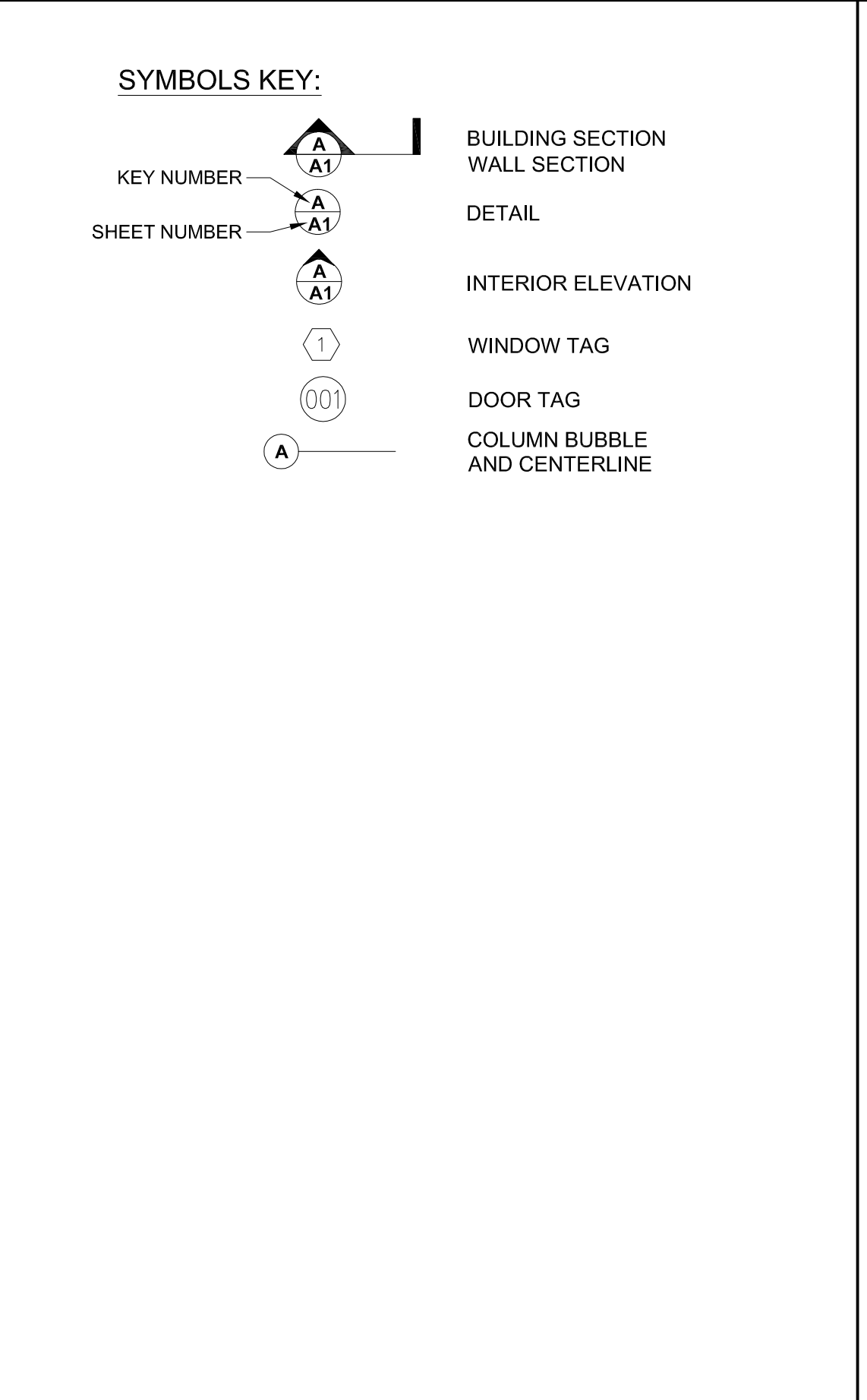


ABBREVIATIONS	
@	AT
Ø	DIAMETER
(E)	EXISTING
±	PLUS/MINUS
AB	ANCHOR BOLT
ABR	ABUSE RESISTANT
AC, A/C	AIR CONDITIONING
ACCU	AIR CONDITIONING CONDENSER UNIT
ACPLAS	ACOUSTICAL PLASTER
ACT	ACOUSTIC CEILING TILE
ADD ALT	ADDITIVE ALTERNATE
AFF	ABOVE FINISHED FLOOR
AP	ACCESS PANEL
APPROX	APPROXIMATE
BCX	BOTTOM CHORD EXTENSION
BD	BOARD
BIT	BITUMINOUS
BLDG	BUILDING
BLP	BORROWED LIGHT PANEL
BO	BOTTOM OF
BOF	BOTTOM OF FOOTING
BOS	BOTTOM OF STEEL
BOT	BOTTOM
BRDG	BRIDGING
BRG	BEARING
BS	BOTH SIDES
BSE BS	BRICK SHELF ELEVATION
C	CHANNEL
CAB	CABINET
CB	CATCH BASIN
CEM BD	CEMENTITIOUS BACKER BOARD
CFM	CUBIC FEET PER MINUTE
CJ	CONTROL JOINT; CONSTRUCTION JOINT
CG	CORNER GUARD
CL	CENTER LINE
CMU	CONCRETE MASONRY UNIT
CO	CONTRACTING OFFICER
COL	COLUMN
CONC	CONCRETE
CONT	CONTINUOUS
CONTR	CONSTRUCTION
CT	CERAMIC TILE
CUH	CABINET UNIT HEATER
CWP	CLEAN WALL PANEL
DBL	DOUBLE
DIA	DIAMETER
DIM	DIMENSION
DF	DRINKING FOUNTAIN
DNA	DOES NOT APPLY
DR	DISPLAY RAIL
DTL	DETAIL
DW	DISHWASHER
DWG	DRAWING
E	EAST
EA	EACH
EF	EXHAUST FAN; EACH FACE
EL	ELEVATION
EJ	EXPANSION JOINT
ELEV	ELEVATOR; ELEVATION
EPDM	ETHYLENE PROPYLENE DIENE MONOMER
EPP	EPOXY PAINT PRESSURE TREATED PLYWOOD
EQ	EQUAL
EQUIP	EQUIPMENT
ETC	ETCETERA
ETR	EXISTING TO REMAIN
EW	EACH WAY
EW/C	ELECTRIC WATER COOLER
EXP	EXPANSION
EXIST	EXISTING
EXT	EXTERIOR
FB	FLAT BAR
FBO	FURNISHER BY OTHERS
FCO	FLOOR CLEAN-OUT
FD	FLOOR DRAIN
FDN	FOUNDATION
FE	FIRE EXTINGUISHER
FF	FINISHED FLOOR; FAR FACE
FFE	FINISHED FLOOR ELEVATION
FIN GR	FINISHED GRADE
FO	FRAMED OPENING
FOS	FACE OF STUD
FRP	FIBERGLASS REINFORCED PLASTIC
FR	FIRE RATING
FRMG	FRAMING
FS	FAR SIDE
FT	FEET
FTG	FOOTING
G	GRANITE
GA	GALUGE
GALV	GALVANIZED
GB	GRAB BAR
GC	GENERAL CONTRACTOR
GDT	GYP/SUM DROP-IN TILE
GV	GRAVITY VENT
GWB	GYP/SUM WALL BOARD
H	HORIZONTAL
HC	HANDICAPPED; HOLLOW CORE
HDR	HEADER
HD WD	HARDWOOD
HDWE	HARDWARE
HGT	HEIGHT
HORIZ	HORIZONTAL
HM	HOLLOW METAL
HR	HOUR
HRU	HEAT RECOVERY UNIT
HT	HEIGHT
H&V	HEATING AND VENTILATING
HVAC	HEATING, VENTILATING AND AIR CONDITIONING
HW	HOT WATER HEATER
I	INSIDE FACE
IJ	ISOLATION JOINT
IN	INCHES
INSUL	INSULATION, INSULATED
IMP	IMPACT RESISTANT
INS	INSULATED
INT	INTERIOR
INV	INVERT
JAN	JANITOR, JANITOR CLOSET
JST	JOIST
JT	JOIST
L	LAVATORY
LAB	LABORATORY; LABEL
LAV	LABORATORY
LOC	LOCATION
LPT	LATEX PAINT
MACH	MACHINE
MAS	MASONRY
MAX	MAXIMUM
MB	MARKER BOARD
MDO	MEDIUM DENSITY OVERLAY
MECH	MECHANICAL
MFR	MANUFACTURER
MIN	MINIMUM
MISC	MISCELLANEOUS
MO	MASONRY OPENING
MR	MOISTURE-RESISTANT
MTL	MATERIAL
MTL	METAL
MUA	MAKE-UP AIR
N	NORTH
NA	NOT APPLICABLE
NIC	NOT IN CONTRACT
NO	NUMBER
NOM	NOMINAL
NTS	NOT TO SCALE
OA	OVERALL
OC	ON CENTER
OD	OUTSIDE DIAMETER
OF	OUTSIDE FACE
OH	OVERHEAD DOOR
OPNG	OPENING
OPP	OPPOSITE
OVHD	OVERHEAD
PA	PUBLIC ADDRESS
PAF	POWDER-ACTUATED FASTENER
PDU	POOL DEHUMIDIFICATION UNIT
PL	PLATE
PLAM	PLASTIC LAMINATE
PLAS	PLASTER
PLF	POUNDS PER LINEAR SQUARE FOOT
PLY WD	PLYWOOD
PNL	PANEL
PNT	PAINT
PP	POWER PANEL
PSF	POUNDS PER SQUARE FOOT
PSI	POUNDS PER SQUARE INCH
PT	PRESSURE TREATED
PTD	PAINTED
PVC	POLYVINYL CHLORIDE
R	RISER; RADIUS
RB	RESILIENT BASE
REF	REFRIGERATOR
RD	ROOF DRAIN
REINF	REINFORCED
REQ'D	REQUIRED
RM	ROOM
RO	ROUGH OPENING
RR	RUB RAIL
RS	RESILIENT FLOORING
RTU	ROOF TOP UNIT
S	SOUTH
SACT	SUSPENDED ACOUSTIC CEILING TILE
SC	SOLID CORE
SCHED	SCHEDULE
SECT	SECTION
SF	SQUARE FOOT; SUPPLY FAN
SHT	SHEET
SIM	SIMILAR
SK	SHEAR KEY
SP	SPECIAL
SPEC	SPECIFICATIONS
SQ	SQUARE
SS	STAINLESS STEEL
STD	STANDARD
STL	STEEL
STRUCT	STRUCTURAL
T	TREAD
TB	TACKBOARD
T&B	TOP AND BOTTOM
TBM	TEMPORARY BENCHMARK
TCE	TOP CHORD EXTENSION
THK	THICK
THRU	THROUGH
TJ	TIE JOIST
TO	TOP OF
TOB	TOP OF BEAM
TOC	TOP OF CONCRETE
TOF	TOP OF FOOTING
TOM	TOP OF MASONRY
TOP	TOP OF PIER
TOS	TOP OF STEEL; TOP OF SLAB
TOW	TOP OF WALL
TP	TOILET PAPER (DISPENSER)
TS	TUBE STEEL
TYP	TYPICAL
UH	UNIT HEATER
UNO	UNLESS OTHERWISE NOTED
V	VENT PIPE; VERTICAL
VB	VAPOR BARRIER
VCT	VINYL COMPOSITION TILE
VERT	VERTICAL
VIF	VERIFY IN FIELD
VP	VISION PANEL
VTR	VENT THROUGH THE ROOF
W	WEST
W/	WITH
W/O	WITHOUT
WC	WATER CLOSET
WD	WOOD
WF	WIDE FLANGE
WH	WATER HEATER
W/O	WITHOUT
WP	WORKING POINT
WS	WEB STIFFENER
WWF	WELDED WIRE FABRIC

GENERAL NOTES:

- DO NOT SCALE DRAWINGS
- FIELD VERIFY ALL DIMENSIONS AND CONDITIONS PRIOR TO PROCEEDING WITH WORK. IF DISCREPANCIES ARE FOUND, NOTIFY ARCHITECT IN WRITING FOR CLARIFICATION BEFORE PROCEEDING WITH WORK.
- ALL DIMENSIONS ARE MEASURED TO FACE OF FINISH, EXCEPT AS NOTED. DIMENSIONS FOR EXISTING ARE SHOWN FOR REFERENCE ONLY AND SHALL BE VERIFIED BY CONTRACTOR PRIOR TO START OF ANY DEMOLITION OR CONSTRUCTION.
- PROVIDE BLOCKING FOR ALL CASEWORK, WALL-MOUNTED DOOR STOPS, AND WALL-MOUNTED FIXTURES AND EQUIPMENT INCLUDING OWNER FURNISHED ITEMS.
- ALL UL RATED ASSEMBLY TO BE CONSTRUCTED ACCORDING TO UL SPECIFICATIONS - FIRE RESISTANCE DIRECTORY, 2009.
- DOOR JAMBS SHALL BE LOCATED 6" FROM CORNER UNLESS NOTED OTHERWISE. MAINTAIN 18" CLEAR FROM STRIKE SIDE OF DOOR TO ANY OBSTRUCTION ON PULL SIDE. MAINTAIN 12" CLEAR FROM STRIKE SIDE OF DOOR TO ANY OBSTRUCTION ON PUSH SIDE WHERE DOOR HARDWARE INCLUDES A CLOSER.
- PATCH HOLES AND CRACKS IN EXISTING WALLS TO RECEIVE NEW PAINT. THE AREAS NOTED FOR PATCHING AND REPAIRS IS NOT EXHAUSTIVE, OTHER AREAS MAY BE DISCOVERED DURING CONSTRUCTION. PATCH AND REPAIR HOLED AND DAMAGED SURFACES CAUSED TO SURFACES DURING SELECTIVE DEMOLITION.
- PROVIDE FIRESTOPPING AT ALL MECHANICAL, ELECTRICAL AND PLUMBING PENETRATIONS IN FIRE-RATED PARTITIONS AND FLOOR/ CEILING ASSEMBLIES ACCORDING TO UL LISTING.
- COORDINATE ALL MECHANICAL, PLUMBING AND ELECTRICAL FLOOR AND WALL PENETRATIONS WITH ARCHITECTURAL, STRUCTURAL, MECHANICAL, PLUMBING AND DRAWINGS. UNLESS NOTED OTHERWISE, ELECTRICAL CONDUIT AND WIRING, PLUMBING AND MECHANICAL PIPING SHALL BE CONCEALED AND WALL FRAMING SHALL BE OF AN ADEQUATE DIMENSION TO ACCOMPLISH THIS WITHOUT CHANGES IN WALL PLANE.
- ALL CONSTRUCTION PHASING AND OPERATIONS SHALL BE COORDINATED WITH THE OWNER. CONTRACTOR SHALL PROVIDE BARRICADES AND FENCING AS REQUIRED. AVOID ANY IMPACT TO THE AREAS DESIGNATED FOR OWNER USE AND OCCUPANCY DURING CONSTRUCTION. CONTRACTOR TO COORDINATE SCHEDULE OF ALL WORK WITH OWNER.
- ALL FURNITURE IS NOT IN CONTRACT.



G1 ABBREVIATIONS

G9 GENERAL NOTES

D13 SYMBOLS KEY

CODE COMPLIANCE INFORMATION

APPLICABLE CODES AND GUIDELINES
 INTERNATIONAL BUILDING CODE (IBC), 2009 EDITION
 NFPA 101 LIFE SAFETY CODE, 2009 EDITION
 AMERICANS WITH DISABILITIES ACT (ADA), 2010 STANDARDS
 ADA GUIDELINES FOR DESIGN AND CONSTRUCTION OF HEALTHCARE FACILITIES, 2008 EDITION
 MAINE UNIFORM BUILDING AND ENERGY CODE, 2010 EDITION

EXISTING CONSTRUCTION TYPE
 IBC - TYPE IIB
 NFPA - TYPE II (2,2.2)

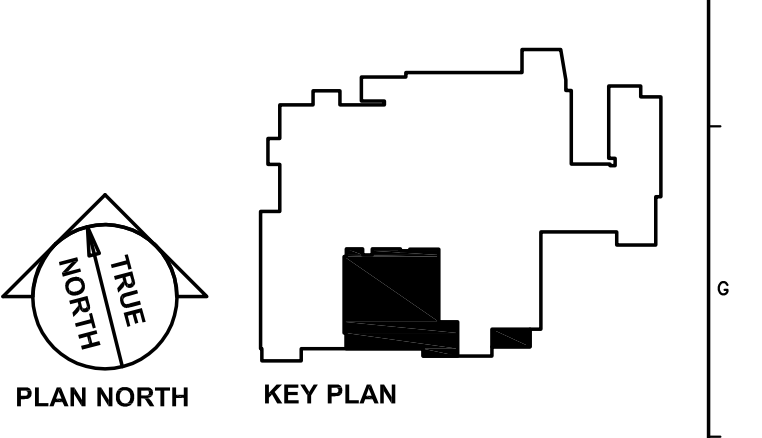
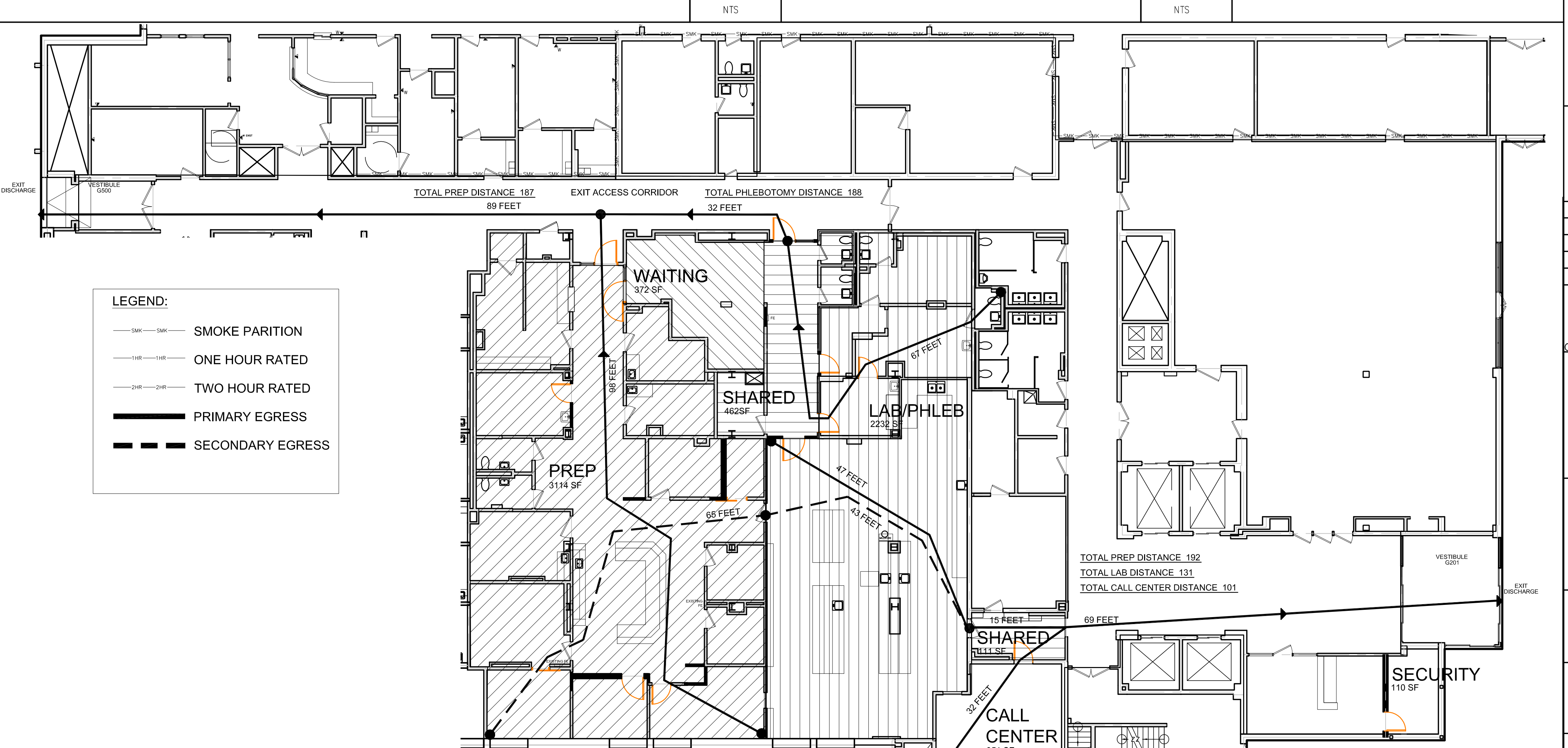
OCCUPANCY CLASSIFICATION
 BUILDING CLASSIFICATION
 IBC - SECTION 308 INSTITUTIONAL GROUP I-2
 NFPA - CHAPTER 19 EXISTING HEALTHCARE

SUITE CLASSIFICATION
 IBC - SECTION 304 BUSINESS GROUP B
 NFPA - CHAPTER 39 EXISTING BUSINESS

FIRE SUPPRESSION
 FULLY SPRINKLERED PER NFPA 13

OCCUPANT LOADS
 PREP: 3114 GSF AT 100 SF/OCCUPANT = 31
 LAB/PHLEBOTOMY: 2232 GSF AT 100 SF/OCCUPANT = 22
 WAITING: 372 GSF AT 100 SF/OCCUPANT = 4
 SHARED: 462 GSF AT 100 SF/OCCUPANT = 4
 CALL CENTER: 351 GSF AT 100 SF/OCCUPANT = 4
 SECURITY: 110 GSF AT 100 SF/OCCUPANT = 1

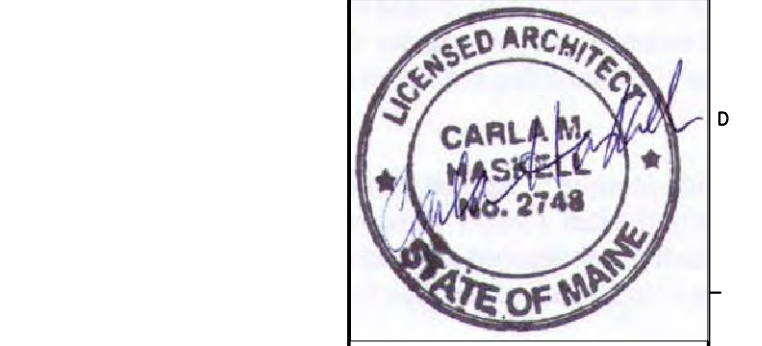
AREA OF RENOVATION
 4263 SQ. FT.



Allied Engineering
 Structural Mechanical Electrical Commissioning
 160 Veranda Street
 Portland, Maine 04103
 P: 207.221.2266
 F: 207.221.2266
 Web: www.allied-eng.com

REV.	DESCRIPTION	DATE

ISSUED FOR CONSTRUCTION
 09 / 25 / 15



DESIGN GROUP COLLABORATIVE
 ARCHITECTURE
 DESIGN + PLANNING
 40 CHURCH STREET
 ELLSWORTH, MAINE
 (207) 664-0500
 22 FREE STREET
 PORTLAND, MAINE
 (207) 669-3300

MAINE MEDICAL CENTER
 PREP NORDX RENOVATIONS
 PORTLAND, MAINE

NOTES AND CODE COMPLIANCE PLAN

SHEET TITLE:	G-001	
DATE:	9/25/15	GRAPHIC SCALE:
SCALE:	AS NOTED	
PROJECT NO.:	122033	SHEET No.:
DRAWN BY:	LMC	
A/E OF RECORD:	CMH	

A1 CODE COMPLIANCE - INFORMATION

A4 LIFE SAFETY PLAN

G-001