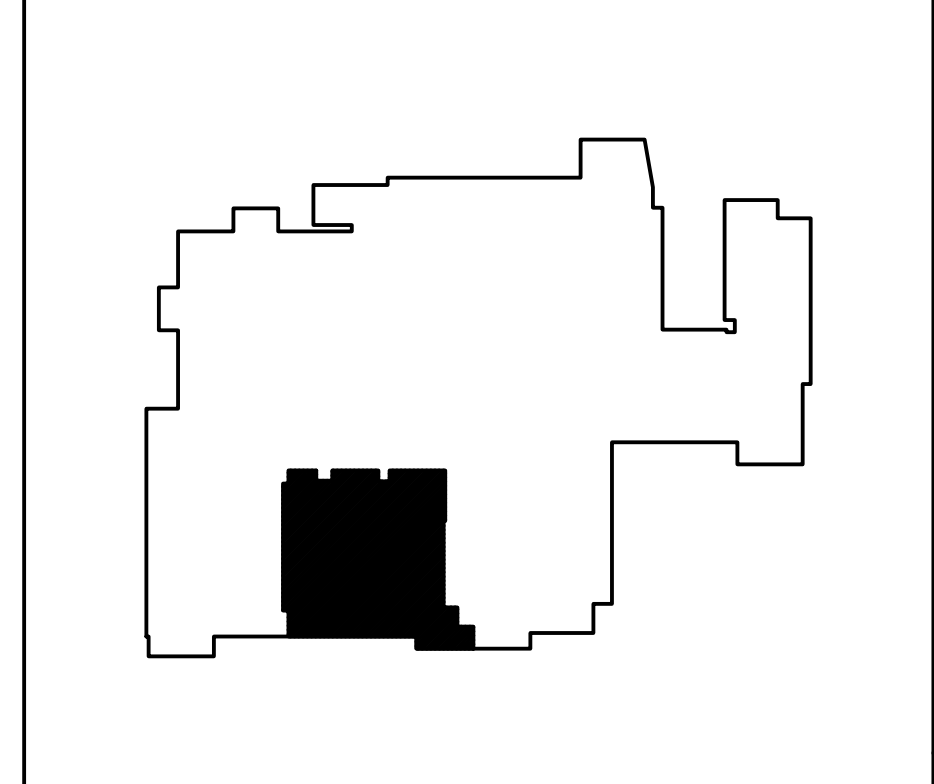


1. REFER TO FLOOR PLANS FOR SCOPE OF WORK AREA. REFER TO ARCHITECTURAL AND MECHANICAL DRAWINGS FOR THE ADDITIONAL DEMOLITION SCOPE OF WORK.
2. COMPLETELY DEMOLISH ALL ELECTRICAL DEVICES WITHIN DEMOLITION AREA, UNLESS NOTED OR INDICATED OTHERWISE. DEMOLITION SHALL INCLUDE BUT NOT BE LIMITED TO WIRING DEVICES, OUTLET BOXES, PULL BOXES, LIGHTING FIXTURES AND SWITCHES, WIRING AND CONDUIT, TELECOMMUNICATIONS, ETC.
3. IN GENERAL, ONLY EXISTING ITEMS TO REMAIN OR BE RELOCATED ARE INDICATED ON THE DRAWINGS. SWITCHBOARDS AND PANELBOARDS TO BE REMOVED ARE INDICATED FOR INFORMATIONAL PURPOSES, BUT THE DRAWINGS ARE NOT INTENDED TO INDICATE ALL SWITCHBOARDS OR PANELBOARDS TO BE REMOVED.
4. FIRE ALARM UPGRADES WILL BE INCLUDED IN SCOPE OF A SEPARATE FIRE ALARM PROJECT. COORDINATE WITH THE OWNER FOR REMOVALS OF EXISTING FIRE ALARM DEVICES.
5. DISCONNECT AND REMOVE ALL WIRING FOR EQUIPMENT TO BE REMOVED BACK TO THE POINT OF CONNECTION. NOTHING SHALL BE ABANDONED IN PLACE.
6. VERIFY ALL EXISTING SOURCES OF POWER TO EQUIPMENT PRIOR TO FINAL REMOVAL.
7. COORDINATE ALL SHUTDOWN PROCEDURES WITH THE OWNER PRIOR TO DISCONNECTING ANY CIRCUITS.
8. PROVIDE BLANK COVER PLATES FOR REMOVED POWER AND COMMUNICATIONS OUTLETS IN EXISTING WALLS TO REMAIN.
9. THE DEMOLITION FLOOR PLANS ARE REPRESENTATIVE AND DO NOT SHOW ALL EXISTING WALLS AND EQUIPMENT.
10. WHERE DEMOLITION IMPACTS WIRING TO EXISTING ITEMS TO REMAIN, PROVIDE WIRING AND CONNECTIONS AS REQUIRED TO RE-FEED ITEMS TO REMAIN.
11. THE WORK INCLUDES DISPOSAL OF ALL REMOVED ELECTRICAL ITEMS INCLUDING BALLASTS, LAMPS, THERMOSTATS, OIL-IMMERSED SWITCHES AND OIL-FILLED TRANSFORMERS. LEGALLY DISPOSE OF ALL HAZARDOUS MATERIALS.

|          |                          |
|----------|--------------------------|
| E9       | DEMOLITION GENERAL NOTES |
| NO SCALE |                          |

- 1 UNLESS NOTED OTHERWISE, ALL LIGHTING FIXTURES AND DEVICES IN THIS AREA TO REMAIN.
- 2 UNLESS NOTED OTHERWISE, ALL LIGHTING FIXTURES AND DEVICES IN THIS AREA TO BE DISCONNECTED AND REMOVED.
- 3 EXISTING IT CABINET TO REMAIN. ALL ASSOCIATED DATA OUTLETS AND RACEWAY ARE TO REMAIN.
- 4 EXISTING SECURITY EQUIPMENT TO REMAIN.

|          |             |
|----------|-------------|
| B9       | KEYED NOTES |
| NO SCALE |             |



|          |          |
|----------|----------|
| A9       | KEY PLAN |
| NO SCALE |          |

DESIGN GROUP  
COLLABORATIVE

ARCHITECTURE  
DESIGN + PLANNING

---

160 Veranda Street  
Portland, Maine 04103  
Phone: 207.231.2206  
www.alliedeng.com

**Allied Engineering**  
Structural Mechanical Electrical Commissioning  
Professional Seal: No. 7375

---

---

| REVISIONS |             |
|-----------|-------------|
| NUMBER    | DESCRIPTION |
|           |             |
|           |             |
|           |             |
|           |             |

---

|                          |                        |
|--------------------------|------------------------|
| Date: SEPTEMBER 25, 2015 | Drawn By: GMC          |
| Checked By: KN           | Project Mgr: IAM       |
| Project No: 13101        | Call File: 13101_E.dwg |
| Graphic Scale: 0 1"      |                        |

---

**ELECTRICAL REMOVALS PLAN AND NOTES**

MAINE MEDICAL CENTER  
PREP NORDX RENOVATIONS  
PORTLAND, MAINE

---

ED-100

N:\Projects\2013\13101 - MMC Nordx Renovations\00 Drawing Files\13101\_E.dwg Sep 24, 2015 - 10:20am

A1 ELECTRICAL REMOVALS PLAN  
SCALE: 1/4"=1'-0"