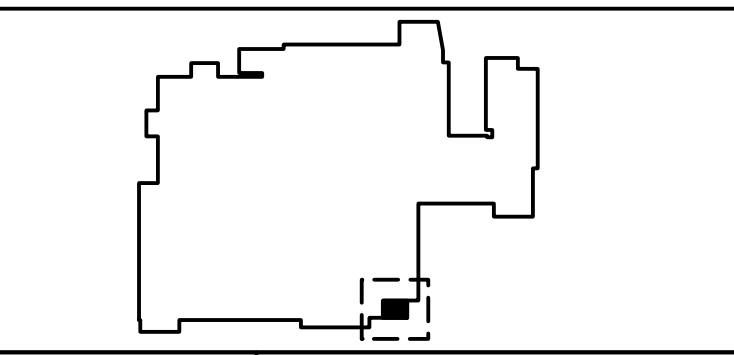


- 1 UNLESS NOTED OTHERWISE, ALL LIGHTING FIXTURES AND DEVICES IN THIS AREA TO BE DISCONNECTED AND REMOVED.
- 2 EXISTING ELECTRIC BASEBOARD HEATER, ASSOCIATED THERMOSTAT, AND CIRCUIT WIRING TO BE DISCONNECTED AND REMOVED.

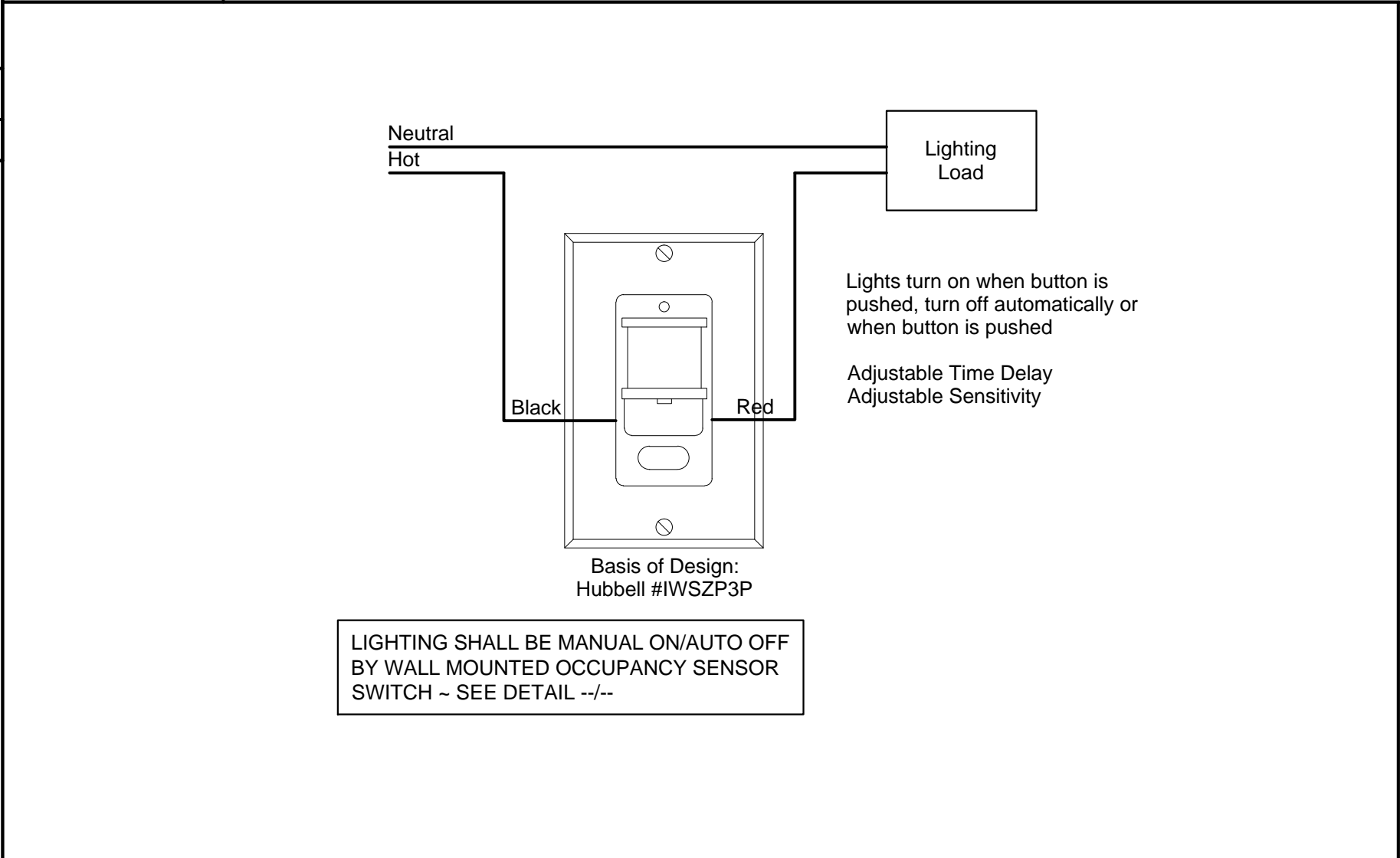
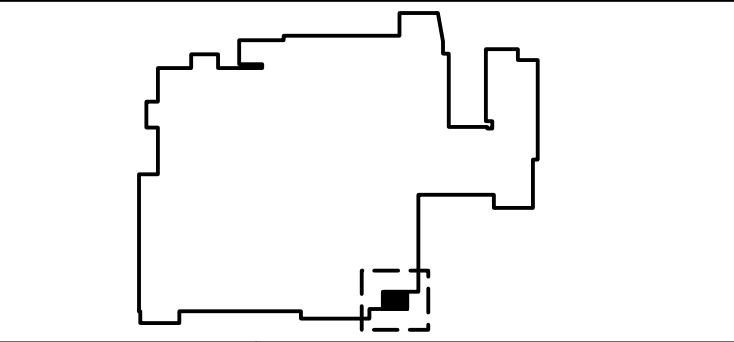
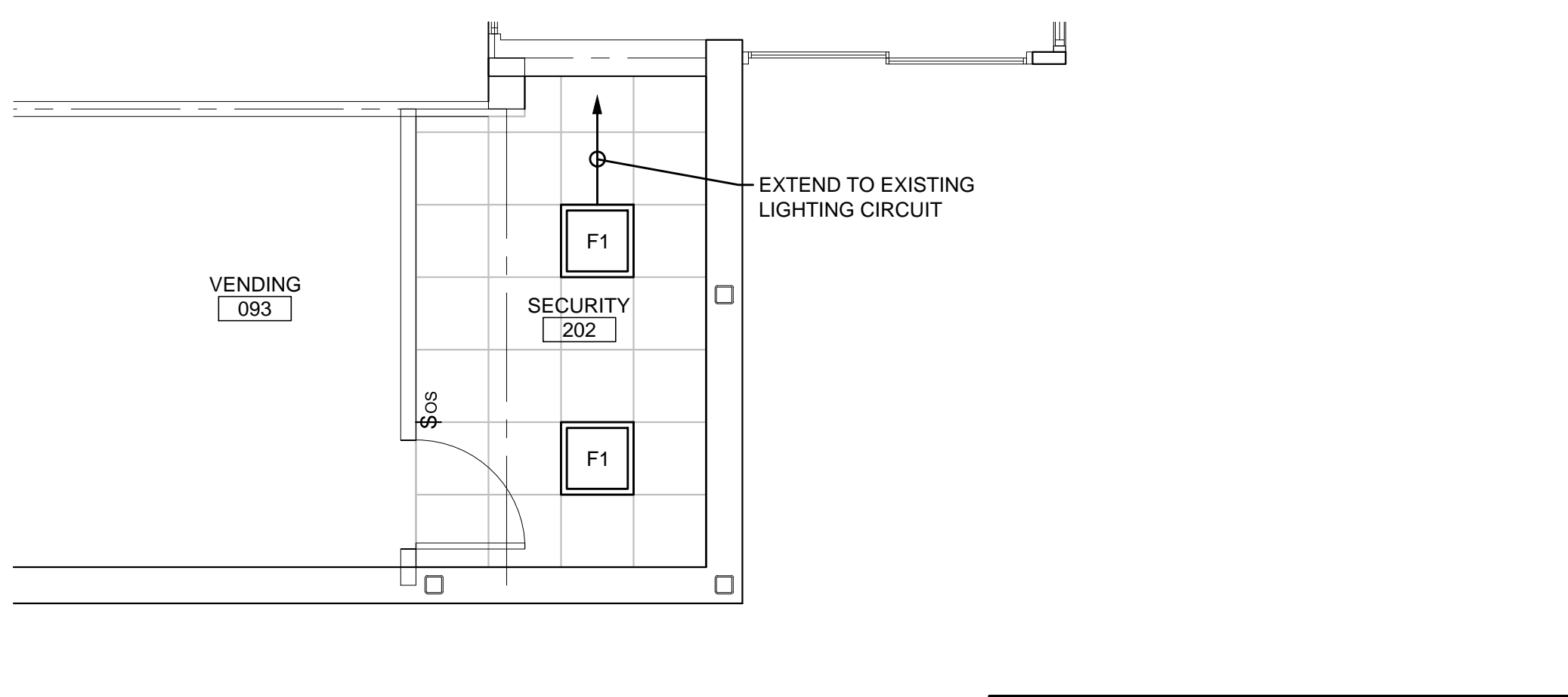


LUMINAIRE SCHEDULE									
TYPE	DESCRIPTION	MFR	CATALOG SERIES NUMBER SEE NOTE 1	MOUNTING	VOLTS	LAMP			KEY NOTES
						QTY PER FIXTURE	WATTS	TYPE	
F1	2x2 HIGH PERFORMANCE TROFFER	FINELITE	HPR LED-A-2x2-DCO-SO-4000K-277-SC	RECESSED	277	1	37	LED ARRAY 4000K	
F2	1x1 HIGH PERFORMANCE TROFFER	FINELITE	HPR-A-1x1-DCO-LED-SO-4000K-277-SC	RECESSED	277	1	19	LED ARRAY 4000K	
EXIT	UNIVERSAL MOUNT EXIT SIGN	DUAL-LITE	LX-U-R-W	CEILING/ WALL	120/277	1	3.8	LED ARRAY	3
<b>NOTES</b>									
1 NOTE THAT THESE NUMBERS ARE NOT COMPLETE CATALOG #S. PROVIDE ALL REQUIREMENTS ON SCHEDULE, NOTES, SPECS, AND DRAWINGS COMBINED.									
2 CATALOG SERIES NUMBERS ARE USED TO ESTABLISH A LEVEL OF QUALITY AND NOT INTENDED TO LIMIT COMPETITION. SERIES NUMBERS ARE NOT COMPLETE CATALOG NUMBERS. COMPLY WITH ADDITIONAL REQUIREMENTS IN SPECIFICATIONS AND DRAWINGS.									
3 PROVIDE WALL, CEILING, OR PENDANT MOUNTING AS INDICATED ON PLANS. PROVIDE NUMBER OF FACES AND ARROWS AS INDICATED.									
4 VERIFY CEILING STRUCTURE AND MOUNTING HEIGHT PRIOR TO ORDERING ANY LIGHT FIXTURES.									

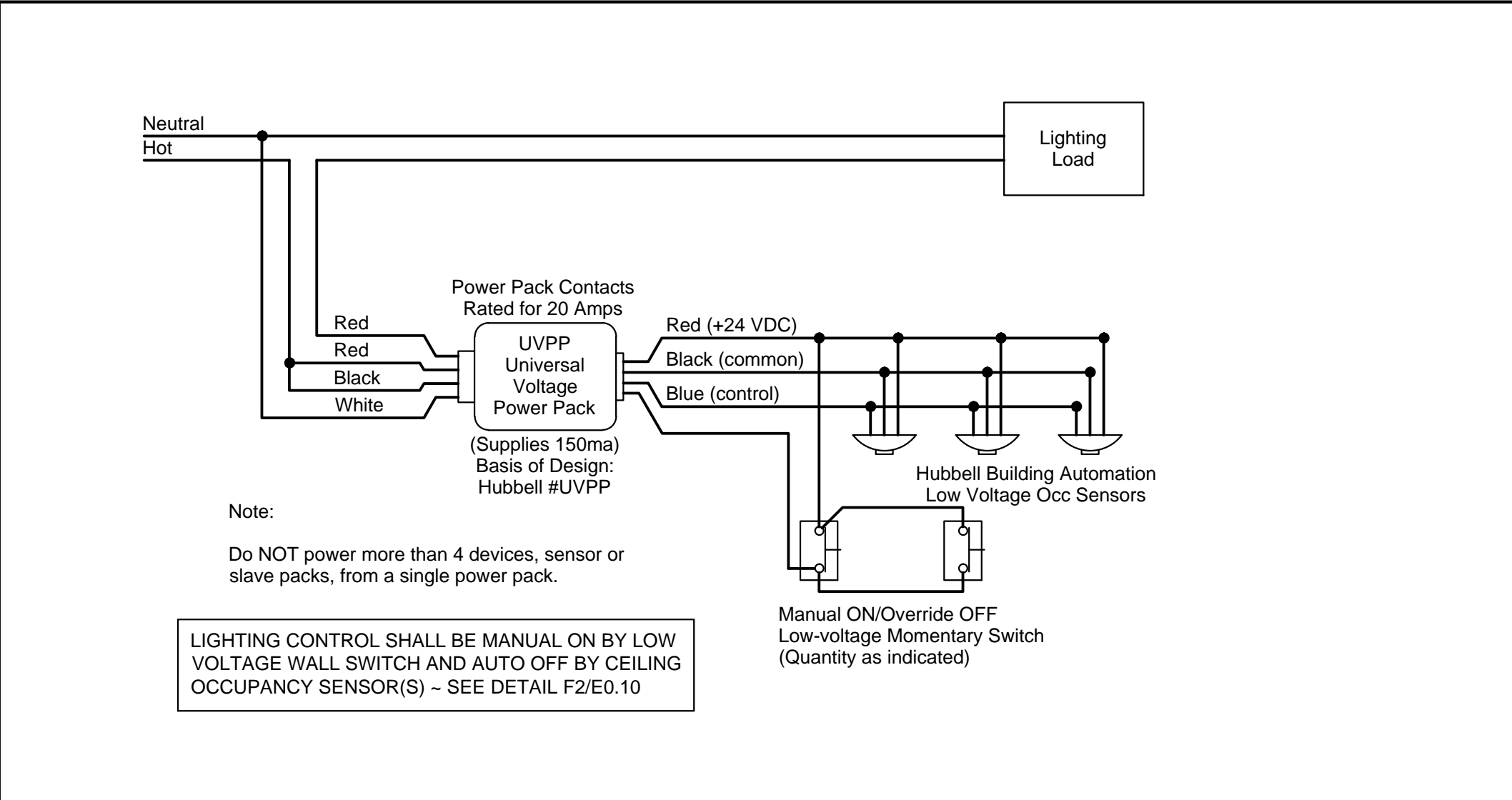
**F4 LIGHTING FIXTURE SCHEDULE**  
NO SCALE

**E1 SECURITY OFFICE DEMOLITION PLAN**  
NO SCALE

**KEY PLAN**  
NO SCALE



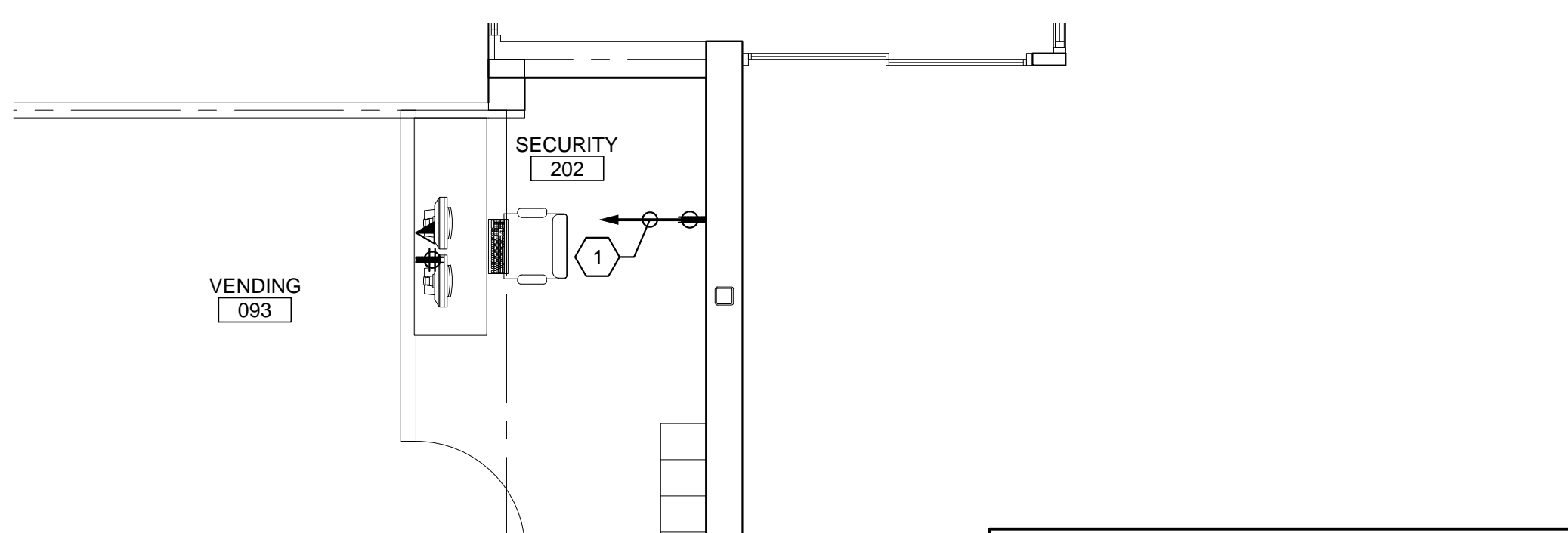
**D4 SWITCHING DETAIL- WALL SWITCH SENSOR AUTO ON/AUTO OFF**  
NO SCALE



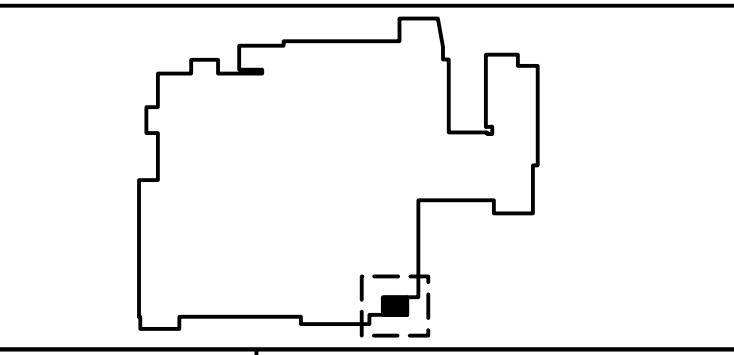
**D7 SWITCHING DETAIL- MANUAL ON SWITCHING WITH AUTO OFF**  
NO SCALE

**C1 SECURITY OFFICE LIGHTING PLAN**  
NO SCALE

**KEY PLAN**  
NO SCALE



- 1 RUN (2)#12 & (1)#12G IN 3/4" C TO LOCAL EXISTING 120V PANEL. PROVIDE 1P-20A CB.



**A1 SECURITY OFFICE POWER AND SYSTEMS PLAN**  
NO SCALE

1. FURNISH ALL LABOR, MATERIAL, EQUIPMENT, AND SUPPLIES AND PERFORM ALL OPERATIONS NECESSARY TO PROVIDE A COMPLETE AND OPERABLE ELECTRICAL SYSTEM AS INDICATED ON THE DRAWINGS, SPECIFIED, AND REQUIRED BY CODE OR BUILDING STANDARDS.
2. COMPLIANCE: ALL WORK SHALL BE PERFORMED IN COMPLETE COMPLIANCE WITH THE NATIONAL ELECTRICAL CODE, ALL STATE OR LOCAL CODES, AND AUTHORITIES HAVING JURISDICTION.
3. THE CONTRACTOR SHALL PAY ALL FEES FOR PERMITS AND OBTAIN ALL APPROVALS FROM AUTHORITIES HAVING JURISDICTION.
4. THE CONTRACTOR SHALL GUARANTEE ALL MATERIALS AND LABOR FOR ONE YEAR FROM THE DATE OF FINAL ACCEPTANCE BY THE OWNER UNLESS NOTED OTHERWISE.
5. PROVIDE SIX COPIES OF SHOP DRAWINGS OF SUPPLIED ELECTRICAL EQUIPMENT FOR APPROVAL INCLUDING PANELBOARDS, SAFETY SWITCHES AND WIRING DEVICES.
6. PRIOR TO SUBMISSION FOR REVIEW OF ANY ITEM OF EQUIPMENT, DETERMINE WHETHER OR NOT IT WILL FIT IN THE SPACE PROVIDED. ANY CHANGES IN THE SIZE OR LOCATION OF THE MATERIAL SUPPLIED WHICH MAY BE NECESSARY IN ORDER TO MEET FIELD CONDITIONS OR IN ORDER TO AVOID CONFLICTS WITH OTHER DIVISIONS SHALL BE BROUGHT TO THE IMMEDIATE ATTENTION OF THE ENGINEER AND APPROVAL RECEIVED BEFORE SUCH ALTERATIONS ARE MADE.
7. PROVIDE "AS BUILT" RECORD DRAWING SET (RED LINE).
8. GENERALLY, ALL WORK IN FINISHED AREAS SHALL BE CONCEALED. CONSULT OWNER FOR DIRECTION WHERE WORK CANNOT BE CONCEALED.
9. FEEDERS AND BRANCH CIRCUITS SHALL BE INSTALLED AS FOLLOWS:  
CONCEALED ABOVE CEILING OR IN STUD WALL: SINGLE CONDUCTORS IN EMT. HOSPITAL GRADE TYPE MC CABLE (METAL CLAD) SHALL BE PERMITTED FOR 15 THROUGH 50 AMP CIRCUITS. EMERGENCY BRANCH CIRCUITS SHALL BE IN CONDUITS.  
FINAL CONNECTIONS TO MOTORS, TRANSFORMERS AND OTHER VIBRATING EQUIPMENT:  
OUTDOORS OR WET LOCATIONS: LIQUIDTIGHT FLEXIBLE METAL CONDUIT  
INDOORS: FLEXIBLE METAL CONDUIT
10. ALL CONDUCTORS SHALL BE COPPER WITH INSULATION RATED FOR 600V AND NOT LESS THAN 90 DEGREES C.
11. BRANCH CIRCUIT CONDUCTORS SHALL NOT BE LESS THAN #12 AWG AND SHALL NOT EXCEED 100 FEET FROM PANELBOARD TO FURTHEST OUTLET. FOR HOMERUNS THAT DO NOT EXCEED 150 FEET, #10 AWG IS PERMITTED. FOR HOMERUNS GREATER THAN 150 FEET, CONDUCTOR SHALL NOT BE LESS THAN #8 AWG.
12. WORKSTATION ELECTRIC - 8-WIRE: DEDICATED 3-CIRCUIT, 8-WIRE CONFIGURATION CONSISTING OF (8) #12AWG CONDUCTORS; (3) PHASE CONDUCTORS, (3) NEUTRAL CONDUCTORS, (1) ISOLATED GROUND AND (1) EQUIPMENT GROUND. TERMINATE IN JUNCTION BOX ADJACENT TO WORKSTATION POWER POLE AND CONNECT TO POWER POLE USING FLEXIBLE METAL CONDUIT.
13. COLOR CODE THE CONDUCTORS OF EACH PHASE AS FOLLOWS:  
480/277 VOLT: A-BROWN, B-ORANGE, C-YELLOW  
120/208 VOLT: A-BLACK, B-RED, C-BLUE  
NEUTRAL CONDUCTORS:  
277 VOLT-NATURAL GRAY  
120 VOLT-WHITE  
GROUND WIRES SHALL BE BARE COPPER OR CODED GREEN IF INSULATED.
14. CIRCUITING SHALL BE AS SHOWN ON THE DRAWINGS AND IN ACCORDANCE WITH APPLICABLE CODES AND STANDARD PRACTICE.
15. COMBINING OF CIRCUITS WITHIN A SINGLE RACEWAY IS PERMITTED, WITH A MAXIMUM OF EIGHT CURRENT CARRYING CONDUCTORS PER HOMERUN.
16. COMMUNICATIONS CONDUIT: 3/4" EMT WITH PULL STRING TO 6" ABOVE ACCESSIBLE CEILING FOR PHONE AND COMPUTER ACCESS.

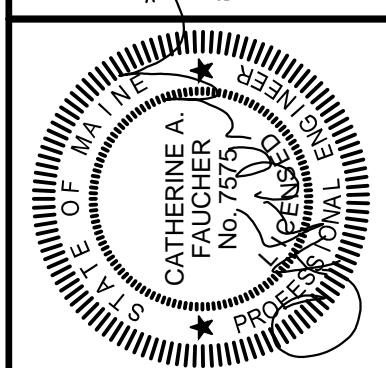
17. ALL CUTTING AND PATCHING REQUIRED FOR INSTALLING THE ELECTRICAL WORK SHALL BE FURNISHED AND INSTALLED BY THE CONTRACTOR. ALL CUTTING SHALL BE PATCHED AND FINISHED TO MATCH SURROUNDING AREA, SATISFACTORY TO OWNER.
18. PENETRATIONS OF ABOVE GRADE FLOOR SLABS, FIRE PENETRATIONS AND FIRE WALLS SHALL BE FIRE STOPPED BY SEALING WITH MATERIAL APPROVED FOR THE APPLICATION.
19. PROVIDE SEALING FITTINGS TO PREVENT PASSAGE OF WATER VAPOR WHERE CONDUITS PASS FROM WARM TO COLD LOCATIONS, SUCH AS REFRIGERATED SPACES, AIR CONDITIONED SPACES OR SIMILAR SPACES. IN CONCEALED WORK, EACH FITTING SHALL BE INSTALLED IN A FLUSH STEEL BOX WITH A BLANK COVER PLATE HAVING THE SAME FINISH AS THAT OF OTHER ELECTRICAL PLATES.
20. FURNISH AND INSTALL ALL SUPPORT HANGERS AND MISC. METALS SUCH AS: GALVANIZED IRON PIPE STANCHIONS, RACKS, FITTINGS, ETC. REQUIRED FOR PROPER INSTALLATION OF WORK. ALL MISC. RACKS AND FITTINGS SHALL BE GALVANIZED AND SHALL EITHER BE INDOOR CHANNEL, POWER STRUT OR UNISTRUT, UNLESS OTHERWISE SPECIFIED.
21. MINIMUM REQUIREMENT FOR GROUNDING ELECTRODE SYSTEM SHALL BE GOVERNED BY THE LATEST EDITION OF THE NEC. ALL GROUNDS, BONDING, ETC. SHALL MEET THESE REQUIREMENTS EXCEPT WHERE MORE STRINGENT REQUIREMENTS ARE SPECIFIED HEREIN. FURNISH AND INSTALL ANY AND ALL ITEMS NECESSARY TO MEET THESE REQUIREMENTS. TEST RESISTANCE USING A MEGGER SPECIFICALLY DESIGNED FOR TESTING GROUNDS AND FOLLOWING MANUFACTURER'S RECOMMENDATIONS. SUBMIT TEST RESULTS TO ENGINEER.
22. EXCEPT WHERE SPECIFICALLY INDICATED, ALL EXPOSED NON-CURRENT CARRYING METALLIC PARTS OF ELECTRICAL EQUIPMENT, METALLIC RACEWAY SYSTEMS, GROUND BUS, METALLIC CABLE ARMOR AND NEUTRAL CONDUCTOR OF THE WIRING SYSTEM SHALL BE GROUNDED.
23. ALL RECEPTACLES SHALL BE GROUNDED VIA A COPPER GROUNDING CONDUCTOR THAT SHALL BE RUN WITH POWER WIRES. A SEPARATE GROUNDING CONDUCTOR SHALL BE RUN IN EVERY FEEDER AND BRANCH CIRCUIT CONDUIT.
24. ALL DEVICES SHALL BE HOSPITAL GRADE, TAMPER PROOF, AND OF ADEQUATE SIZE AND TYPE AS REQUIRED FOR THE PARTICULAR LOCATION AND SERVICE INTENDED. DEVICES SHALL NOT BE RATED LESS THAN 20 AMPS. ALL DEVICES SHALL HAVE RED FINISHES UNLESS NOTED OTHERWISE. DEVICE PLATES SHALL BE RED NYLON.
25. OUTLET BOXES IN THE DRYWALL PARTITIONS OR COLUMNS SHALL BE 4" SQUARE AND NOT LESS THAN 1 1/2" DEEP, GALVANIZED SHEET STEEL WITH PLASTER COVERS. BOXES SHALL BE AS MANUFACTURED BY STEEL CITY OR EQUIVALENT.
26. FURNISH AND INSTALL PULL AND JUNCTION BOXES WHERE SHOWN ON DRAWINGS AND ANY ADDITIONAL BOXES AS MAY BE REQUIRED TO FACILITATE PULLING WIRE AND CABLE OR TO PREVENT DAMAGE TO INSULATION.
27. CONDUCTORS SHALL BE CONTINUOUS WITHOUT JOINTS OR SPLICES ON RUNS BETWEEN OUTLET BOXES. ALL SPLICES SHALL BE MADE AT BOXES ONLY.
28. LABEL EACH RECEPTACLE ON THE INSIDE OF EACH FACEPLATE WITH PANEL AND CIRCUIT NUMBER DESIGNATIONS.
29. PROVIDE ENGRAVED PHENOLIC LABELS ON ALL PANELBOARDS INDICATING PANEL DESIGNATION, VOLTAGE AND SYSTEM CONFIGURATION AND SOURCE PANEL. EACH PANELBOARD SHALL CONTAIN A TYPED DIRECTORY OF ALL CIRCUITS.
30. PROVIDE 4100K LAMPS FOR ALL FLUORESCENT LIGHTING FIXTURES.
31. PROVIDE THE NECESSARY SOURCE OF POWER, INSTRUMENTS, TEMPORARY WIRING AND LABOR, AND PERFORM TESTS AND ADJUSTMENTS OF EQUIPMENT AND WIRING INSTALLED OR CONNECTED UNDER THIS SPECIFICATION TO DETERMINE PROPER PHASING, POLARITY, FREEDOM FROM GROUNDS, AND OPERATION OF EQUIPMENT.

**A4 PROJECT SPECIFICATIONS AND GENERAL NOTES**  
NO SCALE



160 Veranda Street  
Portland, Maine 04103  
Phone: 207.253.2206  
www.alliedeng.com

**Allied Engineering**  
Structural, Mechanical, Electrical, Commissioning



REVISIONS	NUMBER	DATE	BY	DESCRIPTION

Date: SEPTEMBER 25, 2015  
Drawn By: GMC  
Checked By: KN  
Project Mgr: IAM  
Project No: 13101  
Cdr File: 13101\_E.dwg  
Graphic Scale: 1" = 0'

**ELECTRICAL SCHEDULES, DETAILS, AND NOTES**

MAINE MEDICAL CENTER  
PREP NORDX RENOVATIONS  
PORTLAND, MAINE

**E-500**