

PLUMBING FIXTURE SCHEDULE									ANY PRODUCT DESIGNED FOR DISPENSING OF POTABLE WATER SHALL COMPLY WITH THE REDUCTION OF LEAD IN DRINKING WATER ACT AND MEET NSF 61 CERTIFICATION.
SYMBOL	FIXTURE	DESCRIPTION	CW	HW	DRAIN	FLOW RATE	MOUNTING HEIGHT	REMARKS	
WC-1	WATER CLOSET	BOTTOM OUTLET FLOOR MOUNTED FLUSH VALVE ADA	1"		3"	1.28 GPF	17"-19" TOP OF SEAT	A. FIXTURE: AMERICAN STANDARD 'MADERA' No. 3043.001; VITREOUS CHINA, ELONGATED B. SEAT: OLSONITE No. 95SSCT; WHITE, OPEN FRONT, LESS COVER. C. FLUSH VALVE: SLOAN 'ROYAL' No. 111-1.28; 1.28 GPF, MANUAL FLUSH WITH ADA HANDLE.	
LAV-1	LAVATORY	WALL HUNG 15" x 10" x 6-1/2" W x L x D (ID) ADA	1/2"	1/2"	1-1/4"	0.5 GPM	34" TO TOP OF BASIN RIM	A. FIXTURE: AMERICAN STANDARD 'LUCERNE' No. 0355.012; VITREOUS CHINA, 4 INCH CENTERS. B. FAUCET: T&S BRASS No. B-0890-VF05; CHROME PLATED, 4 INCH WRISTBLADE HANDLES, COLOR INDICATORS, 4 INCH CENTERSET, LESS POP-UP. C. SUPPLY: McGUIRE No. LF2165; 1/2 x 3/8 INCH ANGLE, CHROME PLATED, FLEXIBLE. D. DRAIN: McGUIRE No. 155A; OPEN GRID STRAINER 1-1/4 INCH TAILPIECE, CHROME PLATED. E. TRAP: McGUIRE No. 8902; 1-1/4 x 1-1/2 INCH CHROME PLATED. F. INSULATION KIT: TRUEBRO LAV GUARD 2. G. CARRIER: JAY R. SMITH No. 700.	
EW-1	EYE WASH	DECK MOUNTED	1/2"	1/2"		3.9-5.9 GPM		A. FIXTURE: GUARDIAN No. G5022BP; STATIONARY OR REMOVABLE DRENCH HOSE, ANGLED SPRAY HEADS, STAY OPEN VALVE. B. VALVE: LEONARD No. TA-300-LF; THERMOSTATIC MIXING VALVE, 6 GPM @ 20 PSI, COLD WATER BYPASS.	
SK-1	SINK TREATMENT RM	SINGLE COMPARTMENT COUNTERTOP	1/2"	1/2"	1-1/2"	2.2 GPM		A. FIXTURE: INTEGRAL SINK WITH 3-1/2" DRAIN OPENING. B. FAUCET: T&S BRASS No. B-2866-05; 8 INCH CENTERSET GOOSENECK WITH 4 INCH WRISTBLADE HANDLES, NO SPLASH AERATOR. C. DRAIN: JUST MANUFACTURING No. J-35; STAINLESS STEEL CRUMB CUP STRAINER WITH REMOVABLE BASKET AND 1-1/2"x4" TAILPIECE. D. SUPPLY: McGUIRE No. LF2167; 1/2" x 1/2" ANGLE, FLEXIBLE, CHROME PLATED. E. TRAP: ZURN No. ZA-1184; BOTTOM ACCESS SOLIDS INTERCEPTOR, 7-1/2" DIAMETER X 11-1/8" HIGH. USED IN PLACE OF P-TRAP.	
SK-2	SINK HYPERBARIC RM	WALL HUNG 15" x 10" x 6-1/2" W x L x D (ID) ADA	1/2"	1/2"	1-1/2"	2.2 GPM	34" TO TOP OF BASIN RIM	A. FIXTURE: AMERICAN STANDARD No. 0356.015; VITREOUS CHINA, 8 INCH CENTERS. B. FAUCET: T&S BRASS No. B-2866-05; 8 INCH CENTERSET GOOSENECK WITH 4 INCH WRISTBLADE HANDLES, NO SPLASH AERATOR. C. DRAIN: McGUIRE No. 155A; OPEN GRID STRAINER 1-1/4 INCH TAILPIECE, CHROME PLATED. D. SUPPLY: McGUIRE No. LF2167; 1/2" x 1/2" ANGLE, FLEXIBLE, CHROME PLATED. E. TRAP: McGUIRE No. 8902; 1-1/4 x 1-1/2 INCH CHROME PLATED. F. INSULATION KIT: TRUEBRO LAV GUARD 2. G. CARRIER: JAY R. SMITH No. 700.	
SK-3	SINK SOILED UTILITY	FLUSHING RIM FLOOR MOUNT	1"		3"	6.5 GPF		A. FIXTURE: AMERICAN STANDARD No. 9504.999.020; VITREOUS CHINA, No. 7832.504.075 GUARDS, 3 REQUIRED. B. FLUSH VALVE: SLOAN No. 117H; 1-1/2" TOP SPUD, HANDLE IN FRONT.	
SK-4	SINK OSTOMY SINK	FLUSHING RIM FLOOR MOUNT	1"	1/2"	3"	6.5 GPF		A. FIXTURE: AMERICAN STANDARD No. 9504.999.020; VITREOUS CHINA, No. 7832.504.075 GUARDS, 3 REQUIRED. B. FAUCET: T&S BRASS No. B-0657; EXPOSED WALL MOUNT, INTEGRAL STOPS, VACUUM BREAKER, 6 INCH WRISTBLADE HANDLES, WALL SUPPORT. C. FLUSH VALVE: SLOAN No. 117H; 1-1/2" TOP SPUD, HANDLE IN FRONT. D. BEDPAN CLEANSER ASSEMBLY: AMERICAN STANDARD No. 7880.191; VACUUM BREAKER WITH SELF-CLOSING HANDLE, WALL HOOK AND BYPASS.	

NOTES:
 * ADA LAVATORIES TO BE INSULATED WITH TRUBRO INSULATION KIT. PROVIDE AT ALL LAVATORIES WHICH CAN BE ACCESSED BY WHEELCHAIR.
 * FINAL COLOR, TRIM AND ACCESSORIES SHALL BE APPROVED BY ARCHITECT AND OWNER PRIOR TO FIXTURE ORDER RELEASE.
 * REFER TO ARCHITECTURAL DRAWINGS FOR EXACT MOUNTING HEIGHTS OF FIXTURES, OUTLETS AND EQUIPMENT.

PIPE SCHEDULE											ANY PRODUCT DESIGNED FOR DISPENSING OF POTABLE WATER SHALL COMPLY WITH THE REDUCTION OF LEAD IN DRINKING WATER ACT AND MEET NSF 61 CERTIFICATION.	
SYSTEM	PIPE SIZE	PIPE				SHUT-OFF VALVES	INSULATION				HANGERS	
		MATERIAL	JOINTS	FITTINGS	CONNECTIONS		TYPE	PIPE SIZE	THICKNESS	JACKET		HEAT TRACE
COLD WATER	1/2" TO 4"	COPPER-TYPE L	SOLDER (95TA)	WROUGHT COPPER	UNION - BRONZE	BALL - 2 PIECE	A	1 1/2" OR LESS 2" OR LARGER	1/2 INCH 1 INCH	ALUM**	YES**	STANDARD
HOT WATER	1/2" TO 4"	COPPER-TYPE L	SOLDER (95TA)	WROUGHT COPPER	UNION - BRONZE	BALL - 2 PIECE	A	1 1/2" OR LESS 2" OR LARGER	1/2 INCH 1 INCH	ALUM**	YES**	STANDARD
SANITARY and VENT (BELOW GRADE / IN WALLS)	1-1/4" TO 12"	PVC (SCH 40)	SOLVENT WELDED	PVC (SCH 40)	N/A	N/A	N/A		N/A			STANDARD
SANITARY and VENT (ABOVE CEILING)	1-1/4" TO 12"	COPPER DWV CAST IRON	SOLDER (95TA) NO HUB GASKET	COPPER DWV NO HUB	N/A	N/A	A	ALL	1/2 INCH *			STANDARD
MEDICAL PIPING (OXYGEN, MEDICAL AIR)	1/2" TO 4"	COPPER-TYPE L	BRAZED	WROUGHT COPPER	BRAZED	BALL - 3 PIECE (USE LOCKING HANDLE IF OUTSIDE ZVB)	N/A		N/A			STANDARD

NOTES: * INSULATE HORIZONTAL RUNS ABOVE CEILINGS
 ** APPLY WHEN LOCATED OUTDOORS OR IN UNHEATED SPACES.

RestorixHealth
 Excellence in Wound Care

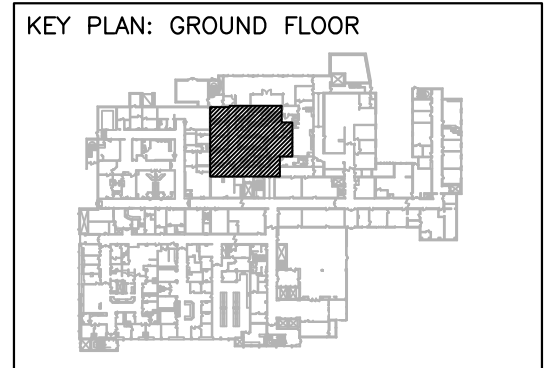
DENNIS NOSKIN ARCHITECTS
 1000 State Street
 Portland, ME 04103

Z&F CONSULTING
 MECHANICAL, ELECTRICAL, PLUMBING
 PIPE PROTECTION
 3000 SWAN AVENUE
 PORTLAND, ME 04106
 www.zandf.com

JOHN ZABLOWICZ, P.E.
 PROFESSIONAL ENGINEER
 LICENSE NO.: 13062

STATE: MAINE
 JOHN ZABLOWICZ, P.E.
 PROFESSIONAL ENGINEER
 LICENSE NO.: 13062

PROJECT: MAINE MEDICAL CENTER
 BRIGHTON CAMPUS
 WOUND CARE AND HYPERBARIC MEDICINE
 333 BRIGHTON AVENUE
 PORTLAND, ME 04103



ISSUE DATES:

△	JANUARY 26, 2015
△	STATE APPROVALS
△	MARCH 20, 2015
△	BLDG. DEPT. REVIEW
△	
△	
△	
△	

DRAWN BY:	ECH
CHECKED BY:	BF
SCALE:	AS NOTED
PROJECT NO.:	P14110

SHEET TITLE:
PLUMBING SCHEDULES

DRAWING NO.:
P-5