

TERMINAL AIR BOX W/ HOT WATER REHEAT											
NUMBER	ROOM SERVED	SIZE	CFM		REHEAT COIL AT MIN FLOW			ELECTRIC V/PH/Hz	FLUID PD (PSI)	VENDER	NOTES
			MAX	MIN	MBH	GPM	EWT (F)				
VAV 1	TREATMENT ROOMS	8	490	420	8.0	1	180	80	120/1/60	0.2	ANEMOSTAT EZTS
VAV 2	TREATMENT ROOMS	8	360	360	6.3	1	180	80	120/1/60	0.2	ANEMOSTAT EZTS
VAV 3	HYPERBARIC ROOM	12	970	970	21.8	1	180	80	120/1/60	0.2	ANEMOSTAT EZTS
VAV 4	WAITING/ADMIN	10	725	490	12.6	1	180	80	120/1/60	0.2	ANEMOSTAT EZTS
VAV 5	CORRIDOR	8	350	300	6.8	1	180	80	120/1/60	0.2	ANEMOSTAT EZTS

SYSTEM NUMBER	SYSTEM	DUCT CONSTRUCTION				INSULATION		IECC 2009 MINIMUM R-VALUES		INSULATION REMARKS
		MATERIAL	PRESSURE CLASS IN	SEAL	TYPE	THICKNESS INCH	UNCONDITIONED SPACES	OUTSIDE BUILDING		
							R-5	R-8		
1	SUPPLY	GALVANIZED	2	A	W/B	1.5	R-5	R-8	USE "B" BOARD WHEN EXPOSED OR OUTDOOR, PROVIDE PROTECTIVE MASTIC	
2	SUPPLY DOWNSTREAM BOXES	GALVANIZED	1.5	A	W/B	1.5	R-5	R-8	USE "B" BOARD WHEN EXPOSED OR OUTDOOR, PROVIDE PROTECTIVE MASTIC	
3	OUTSIDE AIR	GALVANIZED	-1	A	W/B	-	-	-	USE "B" BOARD WHEN EXPOSED OR OUTDOOR, PROVIDE PROTECTIVE MASTIC	
4	RETURN	GALVANIZED	-1	A	W/B	1.5	R-5	R-8	USE "B" BOARD WHEN EXPOSED OR OUTDOOR, PROVIDE PROTECTIVE MASTIC	
5	EXHAUST	GALVANIZED	-1	A	L	-	-	-	10 FT FROM FAN	

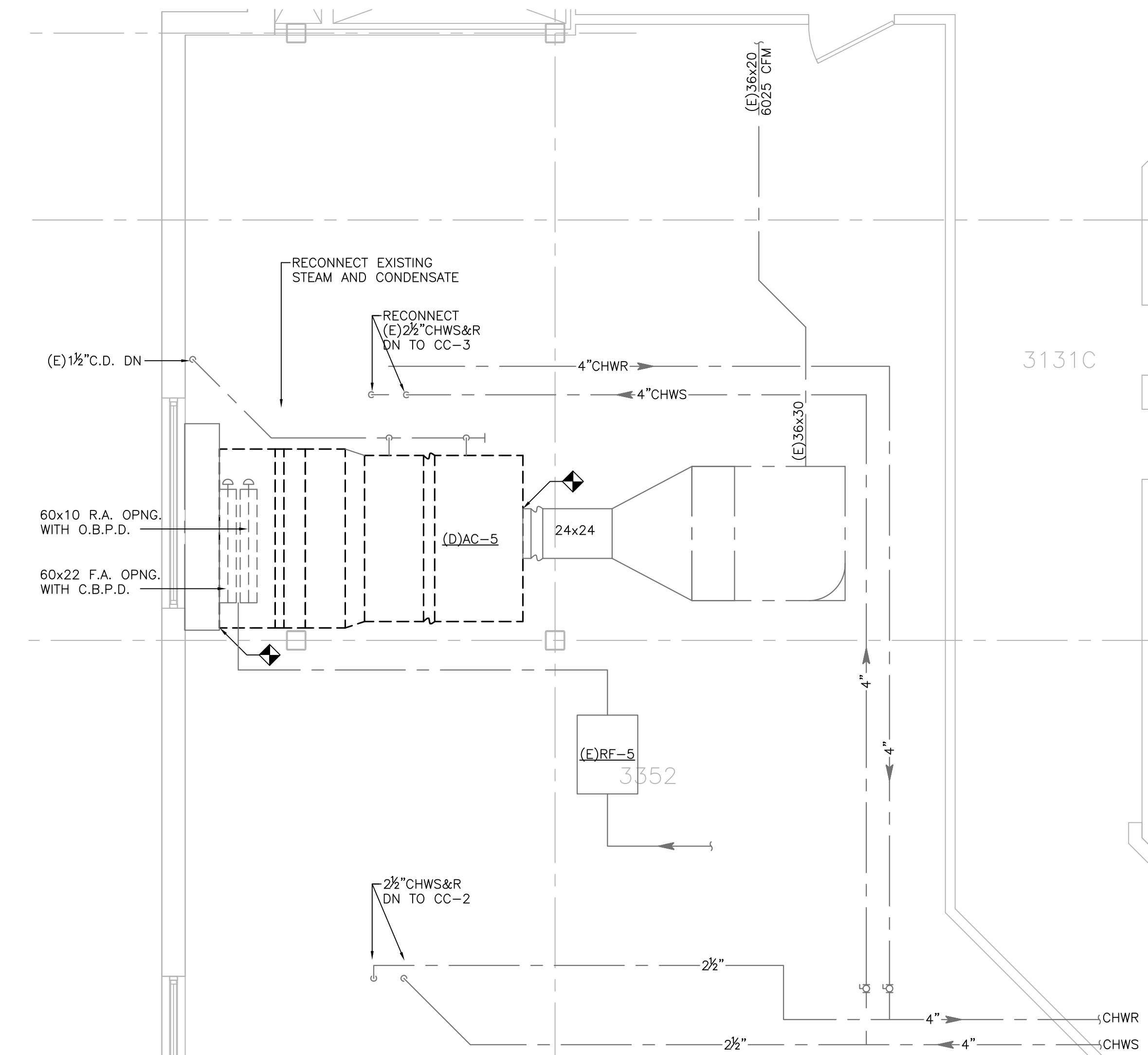
NOTE: ADD ONE INCH TO THICKNESS OF INSULATION WHEN LOCATED OUTDOORS.

SYSTEM NUMBER	SYSTEM	PIPE SIZE	PIPE MATERIAL	JOINTS	FITTINGS	CONNECTIONS	VALVES				INSULATION		HANGERS
							SHUT-OFF	GLOBE	CHECK	BALANCE	TYPE	THICKNESS INCH *	
1	HOT WATER	3/4" TO 2"	COPPER-TYPE L	SOLDER 95TA	WROUGHT COPPER	UNION - BRONZE	BALL - 2 PIECE	BRONZE	BRONZE - SWING	CIRCUIT SETTER	A	1.5	STANDARD
2	CHILLED WATER	2-1/2" TO 10"	STEEL SCH 40	BUTT-WELD	STEEL SCH 40	FLANGE - STEEL 150 PSI	BUTTERFLY - STD	IRON	IRON - SILENT	BUTTERFLY - HP w/ VENTURI	A	2	ROLLER
3	STEAM AND CONDENSATE	3/4" TO 2"	COPPER-TYPE L	SOLDER 95TA	WROUGHT COPPER	UNION - BRONZE	BALL - 2 PIECE	BRONZE	BRONZE - SWING	CIRCUIT SETTER	A	1.5	STANDARD
		2-1/2" TO 10"	STEEL SCH 40	BUTT-WELD	STEEL SCH 40	FLANGE - STEEL 150 PSI	BUTTERFLY - STD	IRON	IRON - SILENT	BUTTERFLY - HP w/ VENTURI	A	2	STANDARD

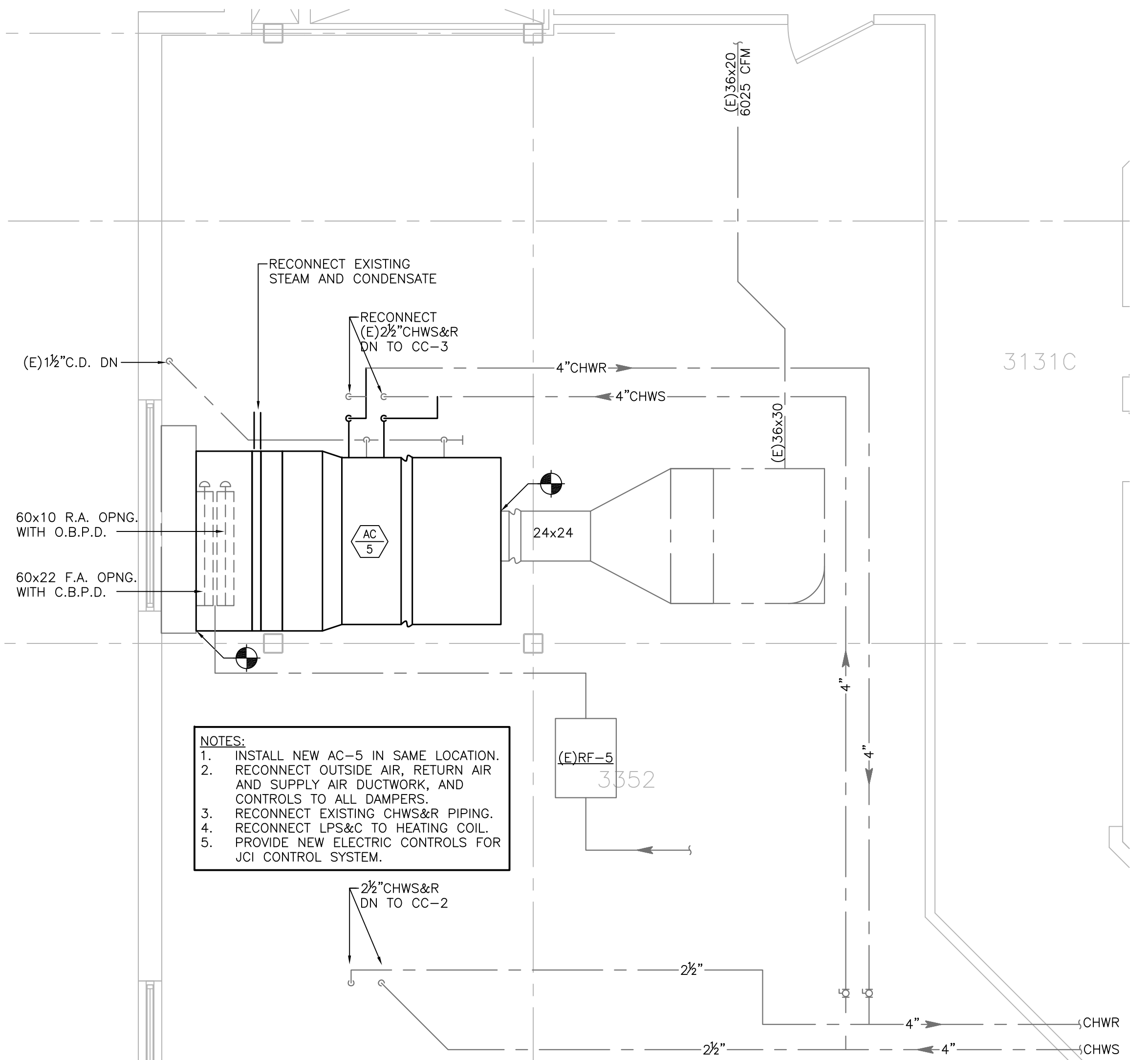
AIR HANDLING UNIT: DOUBLE WALL UNIT, EQUAL TO CARRIER 39M

NUMBER	MIN OUTSIDE AIR	SUPPLY CFM	FAN		FAN TYPE	RPM	MOTOR				VIBRATION ISOLATION			COOLING COIL				HEATING COIL				FILTER		OEM											
			STATIC PRESS INCH WG	TOTAL			HP	RPM	V/Ph/Hz	STARTING DEVICE	BASE	TYPE	DEFL /IN	MBH	SENS	TOTAL	FACE VEL FPM	SP IN WG	AIR - F EAT DB	EAT WB	LAT DB	LAT WB	EWT		LWT	GPM	PD FT	MBH	FACE VEL FPM	SP IN WG	AIR - F EAT DB	EAT WB	LAT DB	LAT WB	PSIG
AC-5	1950	6500	2	4	BI	1800	15	1800	460/3/60	VFD	SI	SI	1	157	220	500	1.5	78	71	53	52.8	45	55	44	15	75	500	.5	45	55	15	75	30%	1.0	CARRIER

NOTE: AC-5 SHALL BE CAPABLE OF ECONOMIZER MODE AND HAVE FINAL MERV-14 FILTER, DOWNSTREAM OF ALL COILS AND FANS. SEE CONTROLS DRAWING ON M-9.



1 THIRD FLOOR PLAN - DEMOLITION  
M-6 MECHANICAL



NOTES:  
1. INSTALL NEW AC-5 IN SAME LOCATION.  
2. RECONNECT OUTSIDE AIR, RETURN AIR AND SUPPLY AIR DUCTWORK, AND CONTROLS TO ALL DAMPERS.  
3. RECONNECT EXISTING CHWS&R PIPING.  
4. RECONNECT LPS&C TO HEATING COIL.  
5. PROVIDE NEW ELECTRIC CONTROLS FOR JCI CONTROL SYSTEM.

1 THIRD FLOOR PLAN - NEW WORK  
M-6 MECHANICAL

**RestorixHealth**  
Excellence in Wound Care

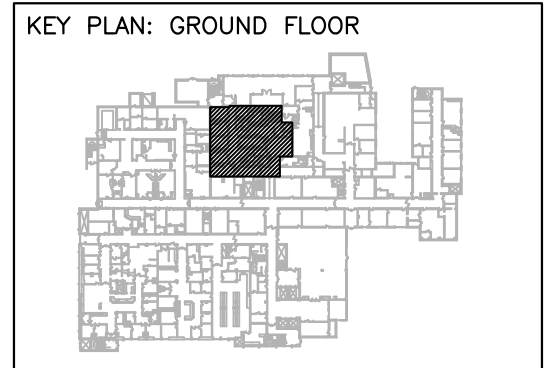
**DENNIS NOSKIN ARCHITECTS**  
1000 Main Street, Portland, ME 04103

**Z&F CONSULTING**  
MECHANICAL, ELECTRICAL, PLUMBING  
1000 Main Street, Portland, ME 04103  
Phone: (207) 761-2000  
www.zandf.com

**JOHN ZABLOWICZ, P.E.**  
PROFESSIONAL ENGINEER  
LICENSE NO.: 13062

STATE: MAINE  
**JOHN ZABLOWICZ, P.E.**  
PROFESSIONAL ENGINEER  
LICENSE NO.: 13062

**MAINE MEDICAL CENTER**  
BRIGHTON CAMPUS  
WOUND CARE AND  
HYPERBARIC MEDICINE  
333 BRIGHTON AVENUE  
PORTLAND, ME 04103



ISSUE DATES:

▲	JANUARY 26, 2015
▲	STATE APPROVALS
▲	MARCH 20, 2014
▲	REVIEW

DRAWN BY:	ALS
CHECKED BY:	BMF
SCALE:	AS NOTED
PROJECT NO.:	P14110

SHEET TITLE:  
MECHANICAL  
SCHEDULES AND  
NEW WORK - THIRD FLOOR  
AND SCHEDULES

DRAWING NO.:  
**M-6**  
© 2014