

1 DEMOLITION SPRINKLER PLAN
 FIRE PROTECTION

GENERAL NOTES:

1. FIELD VERIFY ALL DIMENSIONS AND EXISTING CONDITIONS PRIOR TO PROCEEDING WITH ANY WORK. WHERE DISCREPANCIES OCCUR BETWEEN THESE DOCUMENTS AND EXISTING CONDITIONS, THE DISCREPANCY SHALL BE REPORTED TO THE OWNER AND ENGINEER FOR RESOLUTION.
2. SEE ARCHITECTURAL DRAWINGS FOR CONTRACT LIMITS AND ANY CONSTRUCTION PHASING. SCHEDULE ALL SHUTDOWNS THAT AFFECT UTILITIES AND PORTIONS OF THE BUILDING THAT MUST REMAIN IN OPERATION WITH THE OWNER.
3. REFER TO ARCHITECTURAL DRAWINGS FOR EXACT MOUNTING HEIGHTS OF FIXTURES, OUTLETS, SOFFITS, CEILINGS AND EQUIPMENT.
4. PROVIDE EXPANSION JOINTS, FLEXIBLE PIPE CONNECTORS OR FLEXIBLE HOSE CONNECTORS AS REQUIRED AT EXPANSION JOINTS.
5. ISOLATE, DRAIN AND REFILL EXISTING SYSTEMS AS REQUIRED TO ACCOMMODATE BOTH THE NEW SYSTEM AND THE CONTINUED USE OF THE EXISTING SYSTEM. ALL NEW PIPING SYSTEMS SHALL BE FLUSHED, TESTED AND CLEANED PRIOR TO INITIAL OPERATION. REFER TO SPECIFICATION.
6. PROVIDE ALL NECESSARY TEMPORARY OR PERMANENT CAPS OR PLUGS FOR PIPING. DO NOT LEAVE PIPING OPEN ENDED.
7. PROVIDE PIPING SUPPORTS FOR ALL NEW PIPING. REFER TO DETAILS, SCHEDULES AND SPECIFICATIONS.
8. PROVIDE EQUIPMENT CONNECTION TRANSITIONS IN PIPING AS REQUIRED.
9. PRIOR TO STARTING CONSTRUCTION, DETERMINE EXACT INVERT ELEVATIONS, SIZES, DEPTH AND LOCATION OF EXISTING UTILITIES WHERE TERMINATIONS OR CONNECTIONS ARE TO BE MADE OR INTERSECTIONS OCCUR. NOTIFY ENGINEER OR OWNER OF ANY DISCREPANCY BETWEEN DRAWINGS AND ACTUAL FIELD CONDITIONS. WORK BACK TOWARD FUTURE FROM UTILITY CONNECTION FOR ALL PIPING SYSTEMS.
10. LOCATE ACCESS PANELS IN NON-ACCESSIBLE CEILINGS AND WALLS FOR ALL VALVES, SHOCK ABSORBERS, CLEANOUTS AND ALL OTHER ITEMS THAT REQUIRE ACCESS TO PROPERLY MAINTAIN OR SERVICE THE BUILDING.
11. THE SPRINKLERS SHOWN ON THIS DRAWING ARE A SCHEMATIC LAYOUT, AND FIRE PROTECTION CONTRACTOR SHALL FIELD VERIFY THE FINAL ARCHITECTURAL LAYOUTS, AND FIELD COORDINATE WITH ALL OTHER TRADES FOR EXACT SPRINKLER LOCATIONS AND HEAD COUNTS. ADDITIONAL SPRINKLERS SHALL BE PROVIDED FOR ALL CLOSETS, COMBUSTIBLE CONCEALED SPACES, OBSTRUCTIONS BELOW SPRINKLERS AND OVER FOUR FEET WIDE, AND ALL OTHER LOCATIONS AS REQUIRED BY NFPA 13 AND AUTHORITY HAVING JURISDICTION.
12. FIRE PROTECTION CONTRACTOR IS RESPONSIBLE FOR HYDRAULIC CALCULATIONS OF ENTIRE ZONE WITHIN WORK AREA. HEADS, LOCATIONS AND SIZES WILL BE BASED ON HYDRAULIC CALCULATIONS.
13. ALL ALARM CHECK VALVES WILL CONTAIN TAMPER SWITCHES WHICH, ALONG WITH EACH FLOW SWITCH, WILL BE WIRED BACK TO A CENTRAL ALARM AREA.
14. AN INSPECTOR'S TEST VALVE SHALL BE INSTALLED AT THE HYDRAULICALLY MOST REMOTE PART OF THE SPRINKLER SYSTEM AND TERMINATE OUT TO GRADE WITH A SMALL ORIFICE GIVING THE FLOW EQUIVALENT TO ONE SPRINKLER HEAD.
15. WHERE SPRINKLER HEAD LOCATIONS ARE NOT INDICATED, PROVIDE COORDINATED LAYOUT WITH ARCHITECTURAL CEILING PLAN AND OTHER TRADES. WHERE HEAD LOCATIONS ARE INDICATED, PROVIDE AT SHOWN LOCATIONS AS A MINIMUM. IF ADDITIONAL HEADS ARE REQUIRED TO CONFORM WITH THE AHJ, NFPA OR LOCAL CODES, COORDINATE BEFORE SHOP DRAWING SUBMITTALS.

SHEET NOTES:

- ① ALL NEW WORK TO BE PERFORMED IN ACCORDANCE WITH NFPA 13. EXISTING SYSTEM AND HAZARD TO REMAIN AS IS. THE SCOPE IS TO RENOVATE THE EXISTING SPRINKLER SYSTEM TO SUIT NEW WALLS, SOFFITS, CEILING, MECHANICAL AND LIGHTING LAYOUTS. EXISTING SPRINKLER PIPING SHALL BE EXTENDED, ADJUSTED AND REPLACED AS REQUIRED TO BE IN ACCORDANCE WITH NFPA 13. COORDINATE NEW ROUTING AND HEAD LOCATIONS WITH OTHER TRADES. SPRINKLER PIPING SHALL BE STEEL PIPING; SCHEDULE 40 FOR PIPING UP TO 2-1/2", SCHEDULE 10 FOR PIPING 3" AND LARGER.

RestorixHealth
 Excellence in Wound Care

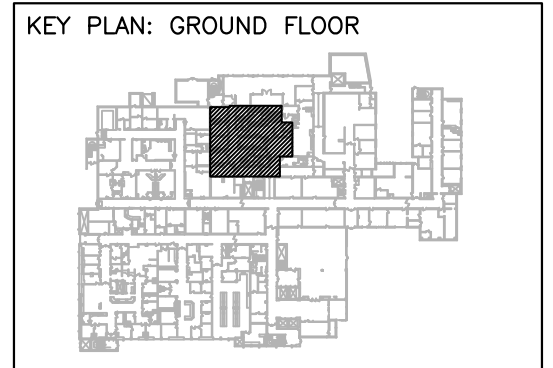
DENNIS NOSKIN ARCHITECTS
 1000 BROADWAY, SUITE 200
 PORTLAND, ME 04103

Z&F CONSULTING
 MECHANICAL, ELECTRICAL, PLUMBING
 FIRE PROTECTION
 50 WILSON AVENUE
 PORTLAND, ME 04103
 www.zandf.com

JOHN ZABLOWICZ, P.E.
 PROFESSIONAL ENGINEER
 LICENSE NO.: 13062

STATE: MAINE
JOHN ZABLOWICZ, P.E.
 PROFESSIONAL ENGINEER
 LICENSE NO.: 13062

PROJECT:
MAINE MEDICAL CENTER
 BRIGHTON CAMPUS
WOUND CARE AND
HYPERBARIC MEDICINE
 333 BRIGHTON AVENUE
 PORTLAND, ME 04103



ISSUE DATES:

▲ JANUARY 26, 2015	STATE APPROVALS
▲ MARCH 20, 2015	BLDG. DEPT. REVIEW
▲	
▲	
▲	
▲	

DRAWN BY:	ECH
CHECKED BY:	BF
SCALE:	AS NOTED
PROJECT NO.:	P14110

SHEET TITLE:
FIRE PROTECTION
DEMOLITION PLAN

DRAWING NO.:
FP-1