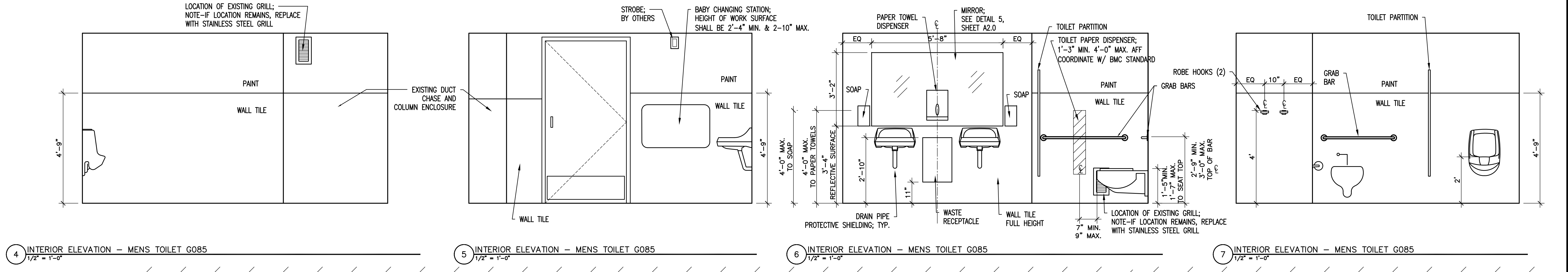
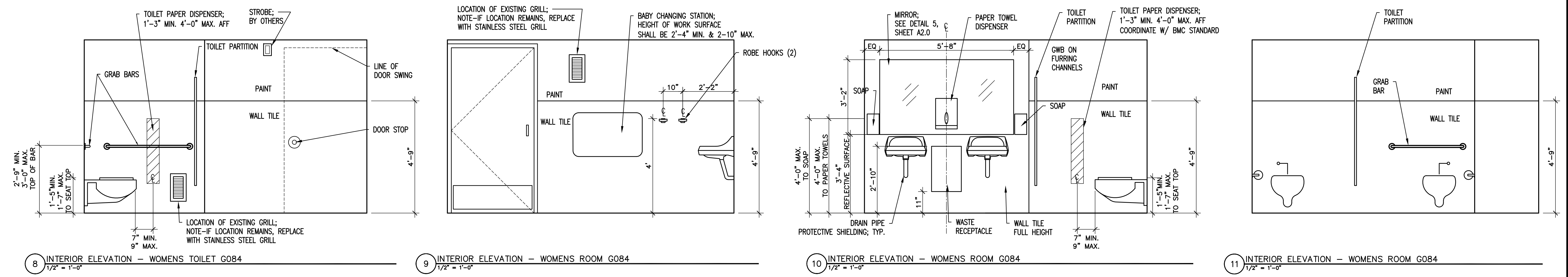


*NOTE:
SEE DETAIL 4, SHEET A2.0 FOR TYPICAL WALL TILE LAYOUTS



DEMOLITION KEY NOTES:

- R-1 REMOVE GYPSUM WALL BOARD COMPLETE, 1 SIDE, INCLUDING RESILIENT BASE AND MISC. WALL MOUNTED ITEMS.
- R-2 REMOVE CEILING, GRID, HANGERS AND ALL ASSOCIATED ITEMS, INCLUDING LIGHT FIXTURES AND DIFFUSERS.
- R-3 REMOVE CARPET AND ADHESIVE TO SLAB BELOW
- R-4 REMOVE WALL MOUNTED ITEMS, INCLUDING BUT NOT LIMITED TO SOAP DISPENSER, PAPER TOWELS, TOILET PAPER DISPENSER, MIRRORS, BABY CHANGING STATION, COAT HOOKS, SHELVING, CORNER GUARDS.
- R-5 REMOVE WALL AS REQUIRED FOR NEW DOOR FRAME.
- R-6 REMOVE DOOR AND FRAME, SALVAGE FOR OWNER.
- R-7 REMOVE SHELVES AND STANDARDS
- R-8 NOT USED.
- R-9 REMOVE SECTION OF WALL FOR NEW DOOR OPENING.
- R-10 REMOVE WALL MOUNTED HAND RAIL, SALVAGE FOR REINSTALLATION
- R-11 REMOVE SINK AND FAUCET
- R-12 REMOVE TOILET OR URINAL
- R-13 REMOVE ELECTRIC BASEBOARD HEATER
- R-14 REMOVE CERAMIC WALL TILE, PLASTER WALL FINISH, LATH, AND ALL ASSOCIATED MATERIALS.
- R-15 REMOVE CERAMIC FLOOR TILE AND GROUT TO SLAB BELOW.
- R-16 REMOVE TOILET PARTITIONS, DOORS, HARDWARE, AND ASSOCIATED ITEMS
- R-17 REMOVE SHOWER AND ALL ASSOCIATED ITEMS
- R-18 REMOVE SECTION OF CMU WALL FOR NEW DOOR OPENING.
- R-19 REMOVE COUNTER AND SUPPORTS
- R-20 REMOVE DISPLAY CASE, SALVAGE FOR OWNER.
- R-21 REMOVE VCT FLOOR AND ADHESIVE TO SLAB BELOW
- R-22 REMOVE PLASTER, LATH AND ASSOCIATED ITEMS TO THE FRAMING. PARTIAL HEIGHT REMOVAL AS REQUIRED FOR NEW TILE BACKER.
- R-23 REMOVE AND RELOCATE HORN/STROBE
- R-24 REMOVE DOOR SLAB, EXISTING FRAME TO REMAIN.

NOTE: BEFORE COMMENCEMENT OF DEMOLITION, DETERMINE ITEMS FOR SALVAGE WITH OWNER.

DEMOLITION GRAPHIC LEGEND:

