



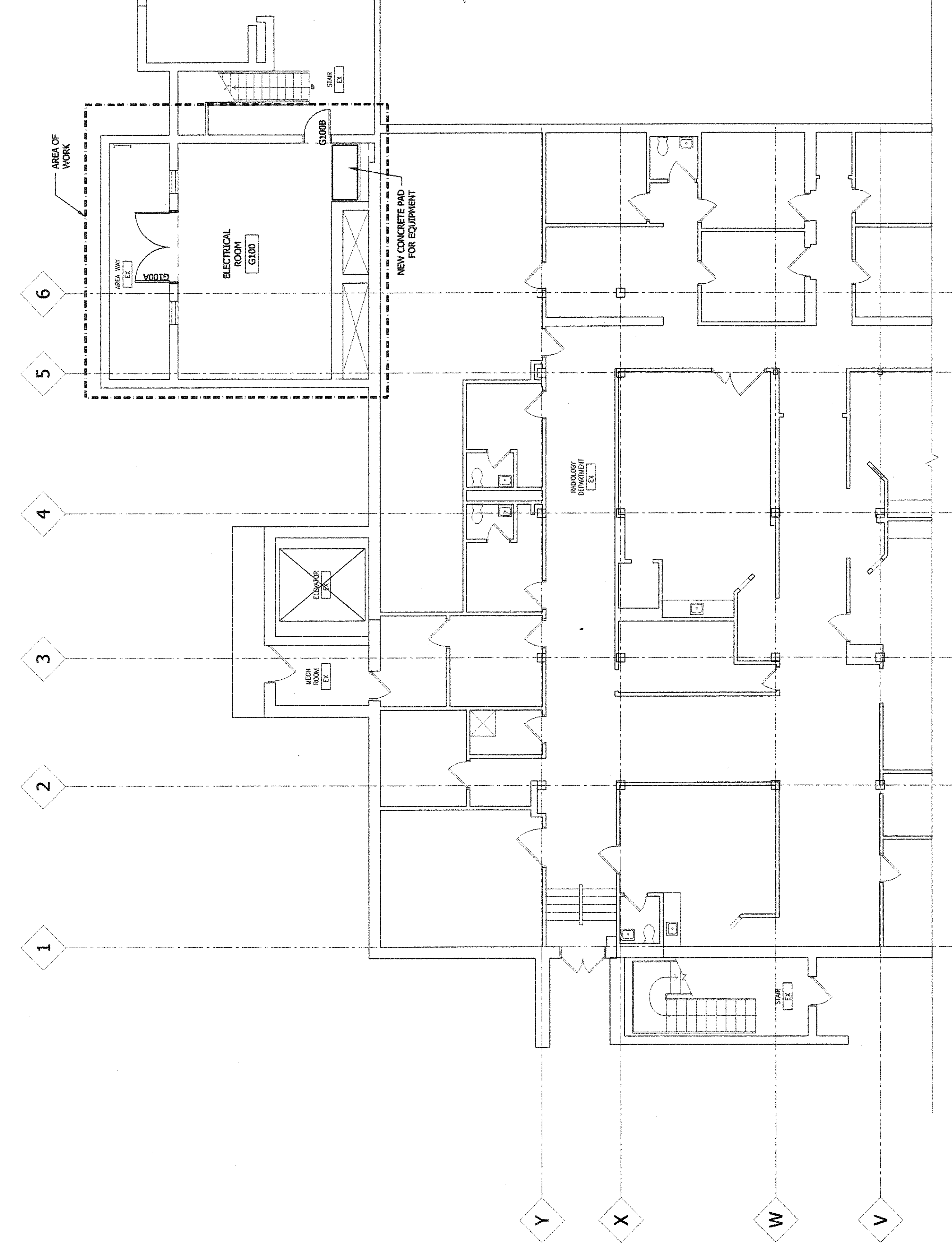
**DIGIORGIO
 ASSOCIATES
 INC.**

BOSTON
 215 N. STREETS
 BOSTON, MA 02114
 TEL. 617.723.7100
 FAX. 617.723.8115
MAINE
 484 MAINE AVE., SUITE 2B
 PORTLAND, ME 04107
 TEL. 207.582.2400
 FAX. 207.582.8320
MID-ATLANTIC REGION
 4018 WESTLAKE DR., SUITE 320
 FORT LAMAR, VA 22033
 TEL. 703.421.5600
 FAX. 703.421.5699

CONSULTANT:

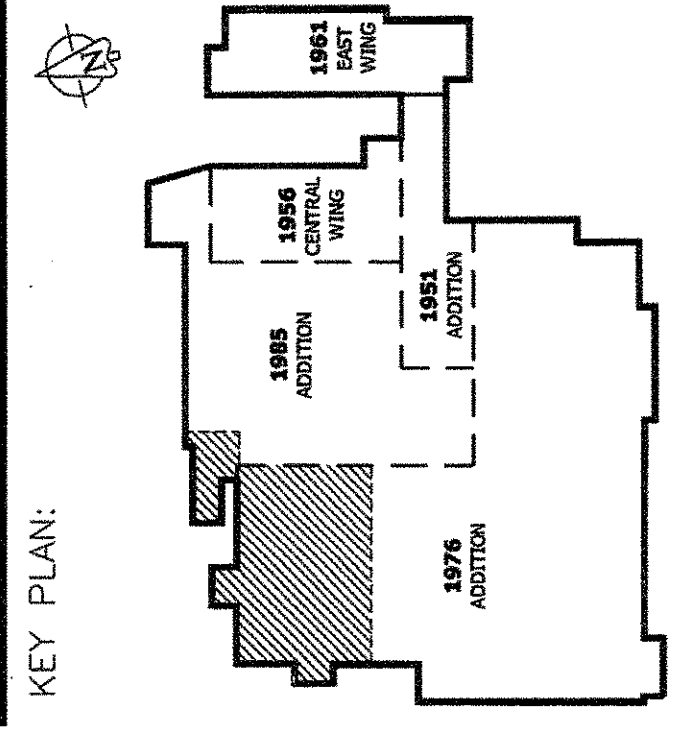
GENERAL NOTES

1. CONTRACTOR TO COORDINATE SIZE OF NEW CONCRETE PADS AND EXACT LOCATIONS WITH ASSOCIATED EQUIPMENT. REFER TO STRUCTURAL DRAWINGS FOR TYPICAL DETAILS
2. SEE MECHANICAL, ELECTRICAL, AND PLUMBING DRAWINGS FOR MORE INFORMATION.
3. REMOVE EXISTING ROOFING SYSTEM AND/OR MATERIAL TO ACCOMMODATE NEW MEP PENETRATIONS. REFER TO STRUCTURAL AND MEP DRAWINGS FOR MORE INFORMATION. REPAIR AND REPLACE NEW OR ABANDONED PENETRATIONS WITH LIKE ROOFING SYSTEMS.
4. ALL ABANDONED, NEW MEP PENETRATIONS ARE TO BE FIRE STOPPED AND/OR SEALED AS REQUIRED.



LETTERS	DATE	DESCRIPTION
A	05/11/09	OWNER REVIEW
B	09/13/09	ISSUE FOR BID

NO.	DATE	DESCRIPTION



DRAWING TITLE:
**PARTIAL GROUND FLOOR
 PLAN**

DESIGNED BY:	AL	SEAL:
CHECKED BY:	CP	
SCALE:	1"=1'-0"	
PROJECT NO.:	93774.00	

DRAWING NO.:

A-202