

Scale: 1/4" = 1'

Northern Pool & Spa
291 Harold L Dow Hwy
Eliot, ME 03903

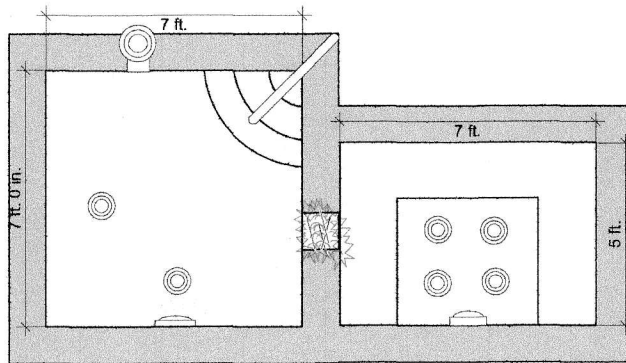
Phone: 207-439-6800
Fax: 207-439-4443

Designed by:
Peter Paul
5/12/2016

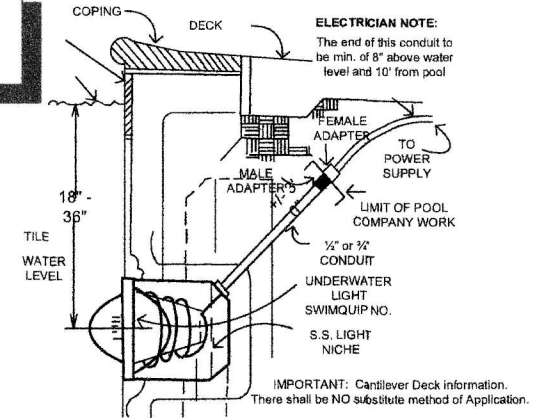
Designed for:

Rob Mitchell
Civiello Job

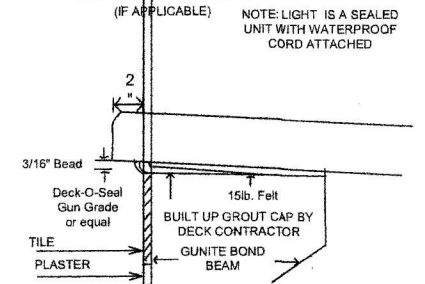
- Plunge Pool
- A - 49
- P - 28
- (1) Handrail
- Custom Stairs
- (2) Main Drains w/Anti Entrapment Lids
- (1) LED Light
- 3'6" to 4' Deep



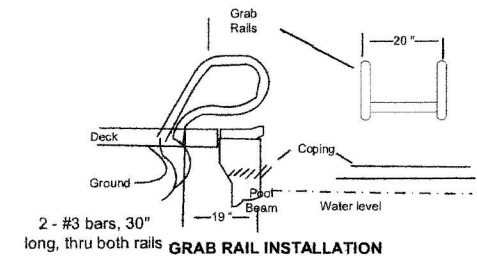
- Spa
- A - 35
- P - 24
- (4) Main Drains w/Anti Entrapment Lids
- (1) LED Light
- 4' Deep



LIGHT INSTALLATION



POOL BEAM WITH CANTILEVER DECK



| GENERAL SPECIFICATIONS | | BACKWASH TO Sanitary Sewer | | LADDER S/STL. | SUPPORTS |
|--|------------|-----------------------------|-----------------------|---|------------------------|
| SIZE | 7 x 7 | DEPTH TO 3'6" to 4' | | No. | SLIDE WATER CONNECTION |
| SHAPE | Square | CODE | HEATER Pentair 400Btu | SIZE | BTU |
| TILE SIZE | 6 X 6 | COLOR | FUEL LINES: BY OTHERS | VENTED: BY OTHERS | ROPE RINGS |
| TEMPLATE NO. | 12" COPING | LIGHT Pentair (2) | GFI | SPA BATH Yes 5x7 | W/ ROPE FLOATS |
| PUMP Pentair Whisperflow | MOTOR H.P. | CLOCK: | BADJ-JET: | APPROXIMATE ELEVATION OF POOL TO BE DETERMINED BEFORE DAY OF EXCAVATION | |
| FILTER Pentair FNS36 | SQ. FT. | ELECTRIC BY: OTHERS | | GRADING | STUB PLUMB YES NO |
| TURNOVER | HRS. | ELECTRIC BONDING BY: OTHERS | | DECK BY: OTHERS | |
| RETURN INLETS | | CLEANING TOOLS Yes | TEST KIT Yes | TREES and STUMPS BY: OTHERS | |
| MAIN DRAIN W/ HYDROSTATIC RELIEF Pentair | | VAC SET Yes | HOSE Yes | APPROXIMATE GALLONS 1,359 Spa 936 | |
| SKIMMER - MODEL Pentair | | BOARD | SUPPORTS | | |