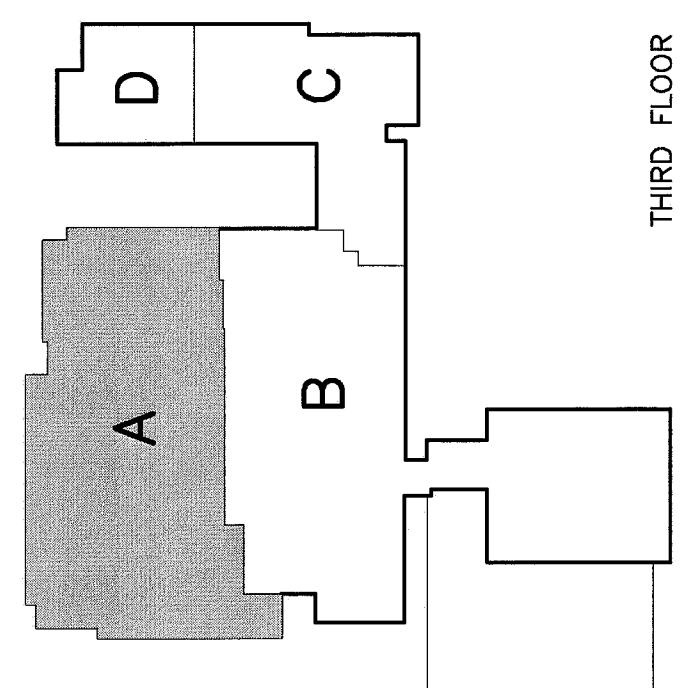


NOTES:

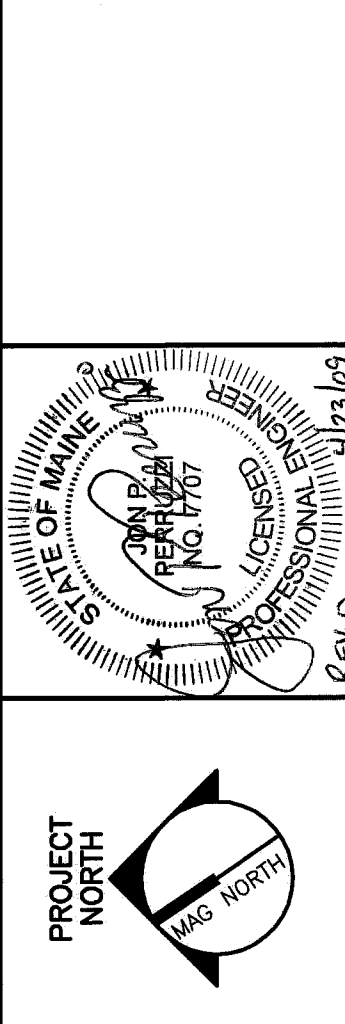
- SEE SHEET E-001 FOR LEGEND AND GENERAL NOTES.
- WHERE SWITCHES AND MOTION SENSORS ARE SHOWN IN THE EXAM ROOM, THE SWITCHES ENABLE THE MOTION SENSORS.
- FOR LOCATION OF PANEL BOARD LSB3-4, SEE EL102; FOR LOCATION OF PANEL BOARD PP, SEE E1103.
- LIGHTING IN ICU/TRAUMA 3101, L101, AND SIM PATIENT CONTROL ROOMS IS TO BE PROVIDED IN THE ADJACENT CONTROL ROOM. SEE EP651 FOR TYPICAL CONTROL SCHEMATIC.

KEYED NOTES:

- EXISTING LIGHT FIXTURE, REUSED. SWITCH S0 CONTROLS THE MIDDLE COMPARTMENT READING LIGHT. SWITCH S1 CONTROLS THE END COMPARTMENT AMBIENT LIGHT NEAR THE HIGH END.
- PROVIDE POWER TO OWNER FURNISHED EXAM LIGHTS DIRECTED BY OWNER.



F18	KEY PLAN
ISSUED FOR CONSTRUCTION	4-24-09
DATE	4-24-09

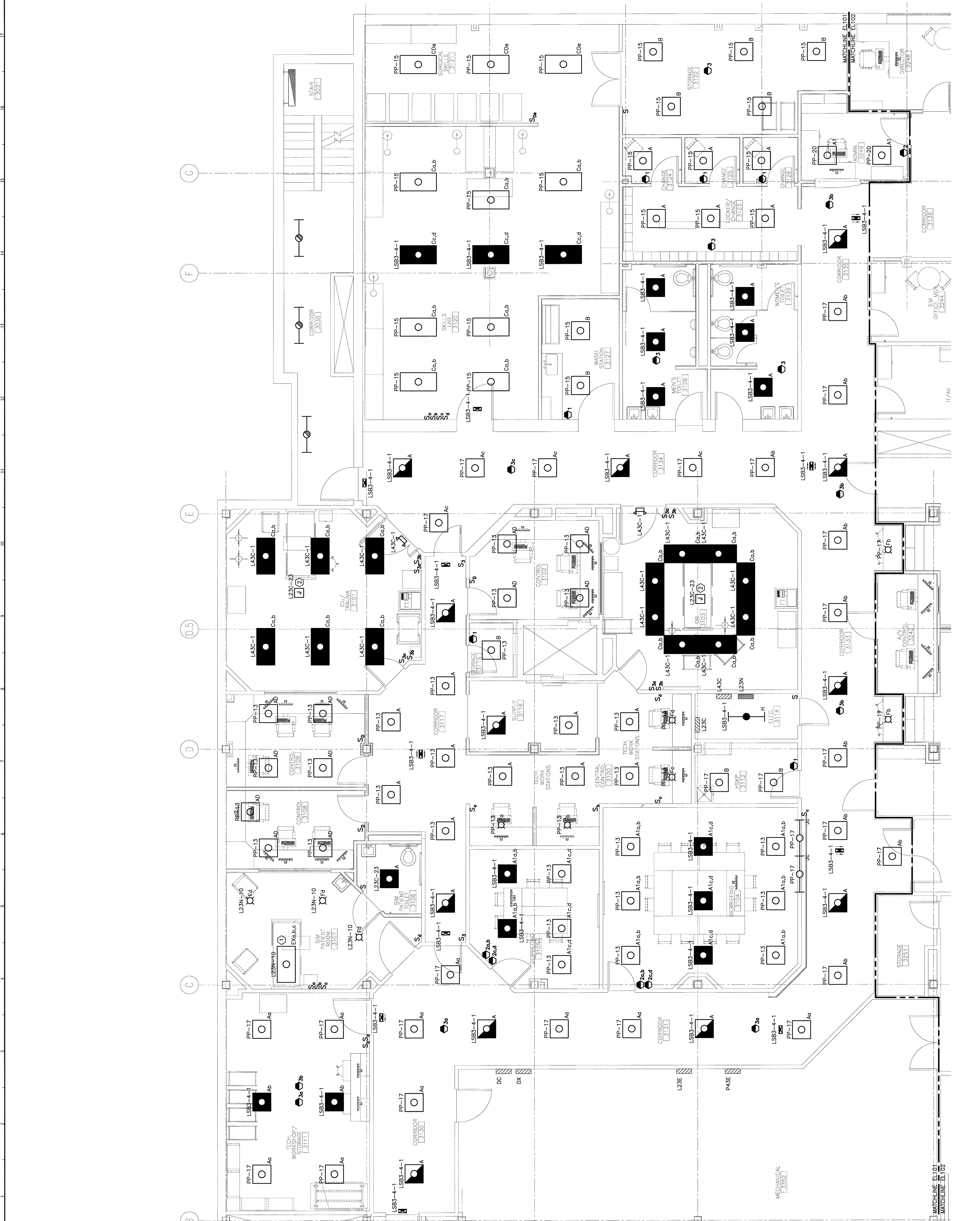


SMRT
 MAINE MEDICAL CENTER
 OFFICE OF MEDICAL EDUCATION
 PORTLAND, MAINE

ARCHITECTURE
 ENGINEERING
 INTERIOR DESIGN
 COMMISSIONING
 www.smrtinc.com

144 Fox Street, Box 618
 Portland, Maine 04104
 Tel: (207) 773-3966
 Fax: (207) 773-3070

PROJECT NAME: CP
 SHEET NO.: EL101
 PROJECT NO.: 08093-00



THIRD FLOOR PLAN
 LIGHTING PLAN
 SHEET TITLE: EL101
 SCALE: 1/4"=1'-0"
 DATE: 4-24-09
 PROJECT NO.: 08093-00
 SHEET NO.: EL101