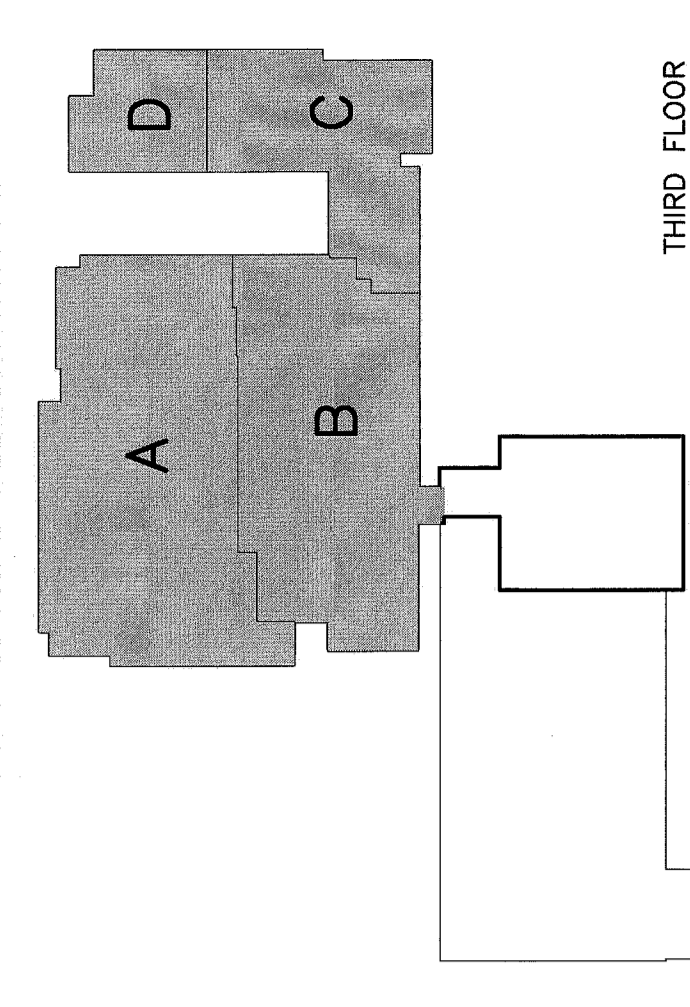
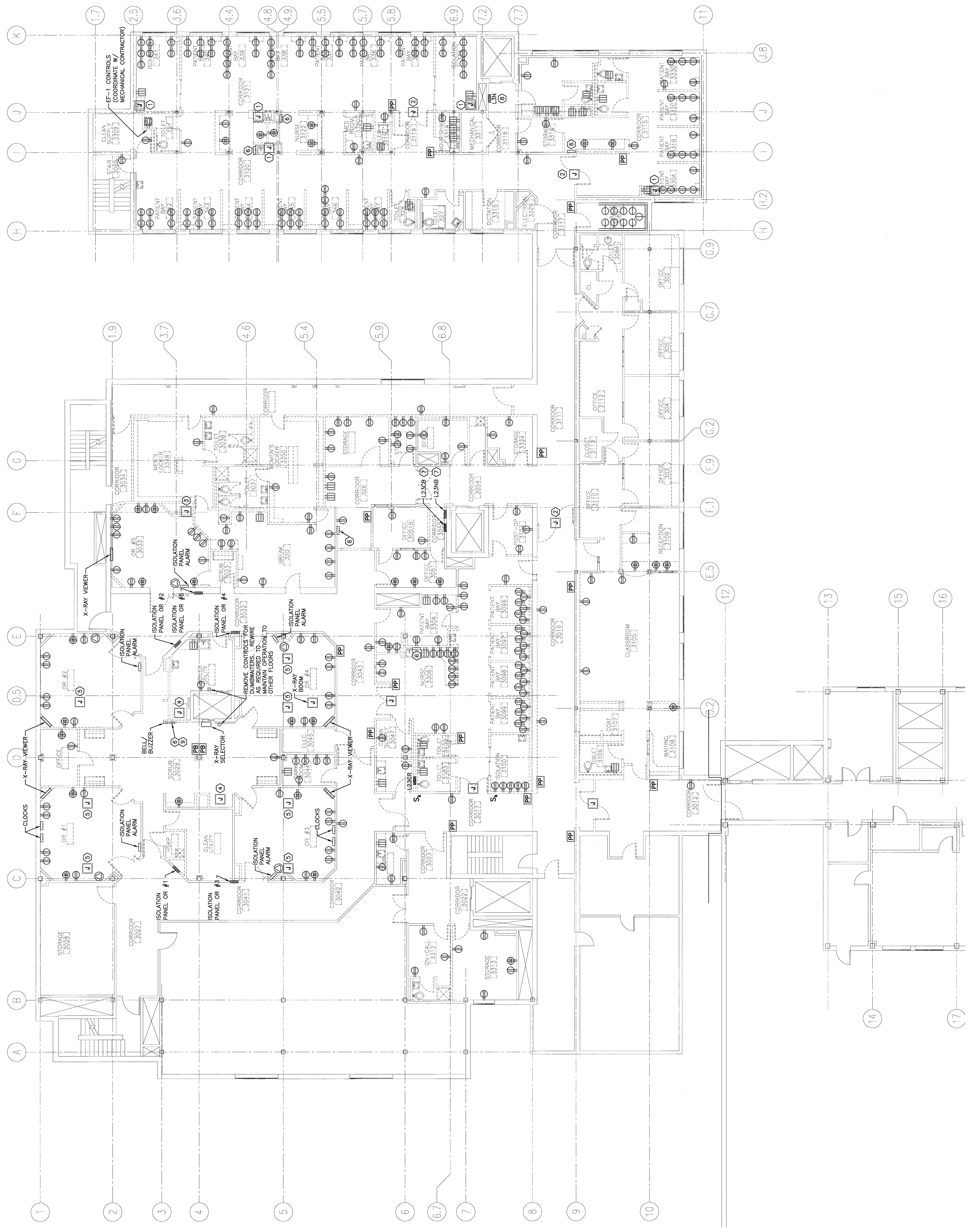


NOTES:

- SEE SHEET E-001 FOR LEGEND AND GENERAL NOTES.
- DEMOLITION INFORMATION IS BASED ON FIELD INVESTIGATION. ALL DEVICES SHALL BE REMOVED FROM WALLS SHOWN TO BE DEMOLISHED REGARDLESS OF WHETHER THEY ARE IDENTIFIED AS SUCH. CONTRACTOR SHALL BE RESPONSIBLE FOR BACK TO PANELBOARD. CONTACT ENGINEER IF THERE IS ANY DOUBT AS TO WHETHER DEVICE IS TO BE DEMOLISHED.

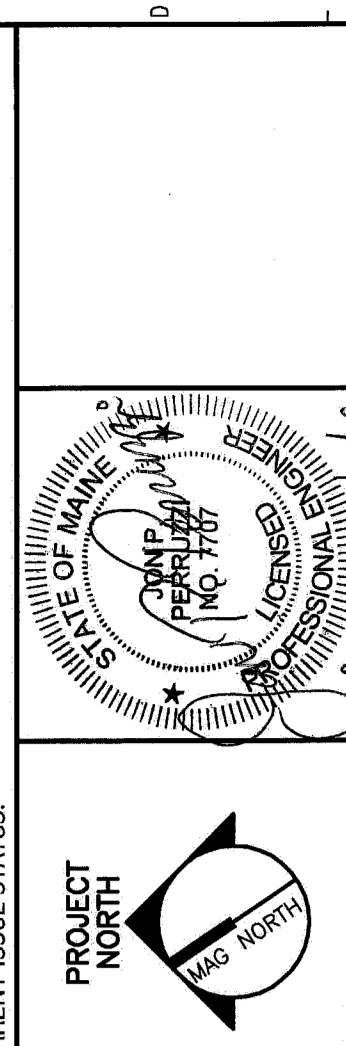
KEYED NOTES:

- DEMO ELECTRICAL ASSOCIATED WITH HANDS-FREE FAUCET CONTROLS.
- DEMO ELECTRICAL ASSOCIATED WITH AUTOMATIC DOOR OPERATOR.
- DEMO ELECTRICAL ASSOCIATED WITH WARMING CABINET.
- DEMO ELECTRICAL ASSOCIATED WITH STERILIZER.
- DEMO ELECTRICAL ASSOCIATED WITH MED GAS COLUMN.
- DEMO ELECTRICAL ASSOCIATED WITH MED GAS PANEL.
- DEMO ELECTRICAL ASSOCIATED WITH MED GAS ALARM PANEL. RELOCATED. SEE EP02 FOR NEW LOCATION.
- PANELBOARD, FEEDER & BRANCH CIRCUITS TO BE DEMOLISHED. RACEWAY AND FEEDER WIRING TO BE DEMOLISHED. EXISTING CIRCUITS 1 & 9 WILL BE RE-FED FROM PANELBOARD B-2A IN THE MAIN CARE ELECTRICAL CLOSE 2147 ON THE 2ND FLOOR. PROVIDE A RAY BREAKER @ SLOTS 10, 12 AND 14, 16 IN PANEL B-2A.
- BRUIT FOR THIS MED GAS ALARM PANEL TO BE TRANSFERRED TO NEW PANEL. SEE EP01 FOR NEW PANEL LOCATION.



REV	DESCRIPTION	DATE
0	ISSUED FOR CONSTRUCTION	4-24-09

ISSUED FOR CONSTRUCTION
4-24-09



PROJECT NORTH
ARCHITECTURE
ENGINEERING
PLANNING
INTERIOR DESIGN
COMMISSIONING

SMART
MAINE MEDICAL CENTER
OFFICE OF MEDICAL EDUCATION
PORTLAND, MAINE

THIRD FLOOR
POWER DEMOLITION PLAN

SCALE	1/8"=1'-0"	DATE	4-24-09
PROJECT MANAGER	CP	GRAPHIC SCALE	0' 1'
JOB CAPTURING	BA/CS		
DATE OF RECORD	JPF	SHEET No.	ED101
SMART CAD FILE	ED101-00093		
PROJECT No.	080593-00		

A1 THIRD FLOOR FACILITY PLAN

1/8"=1'-0"