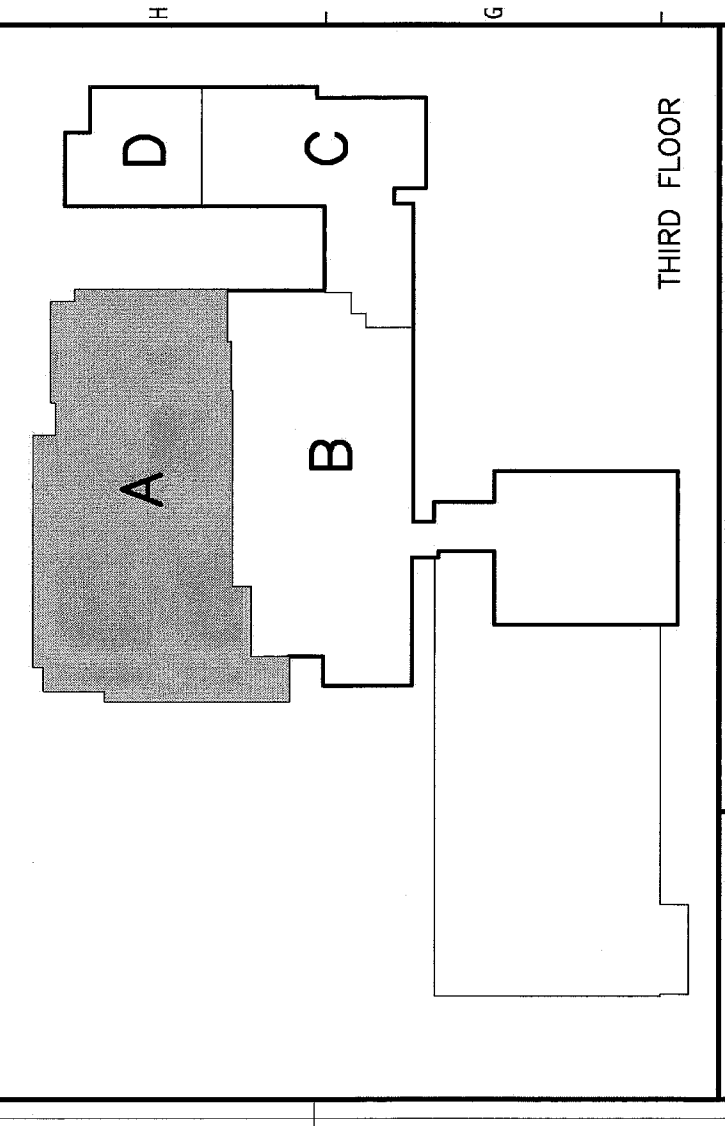
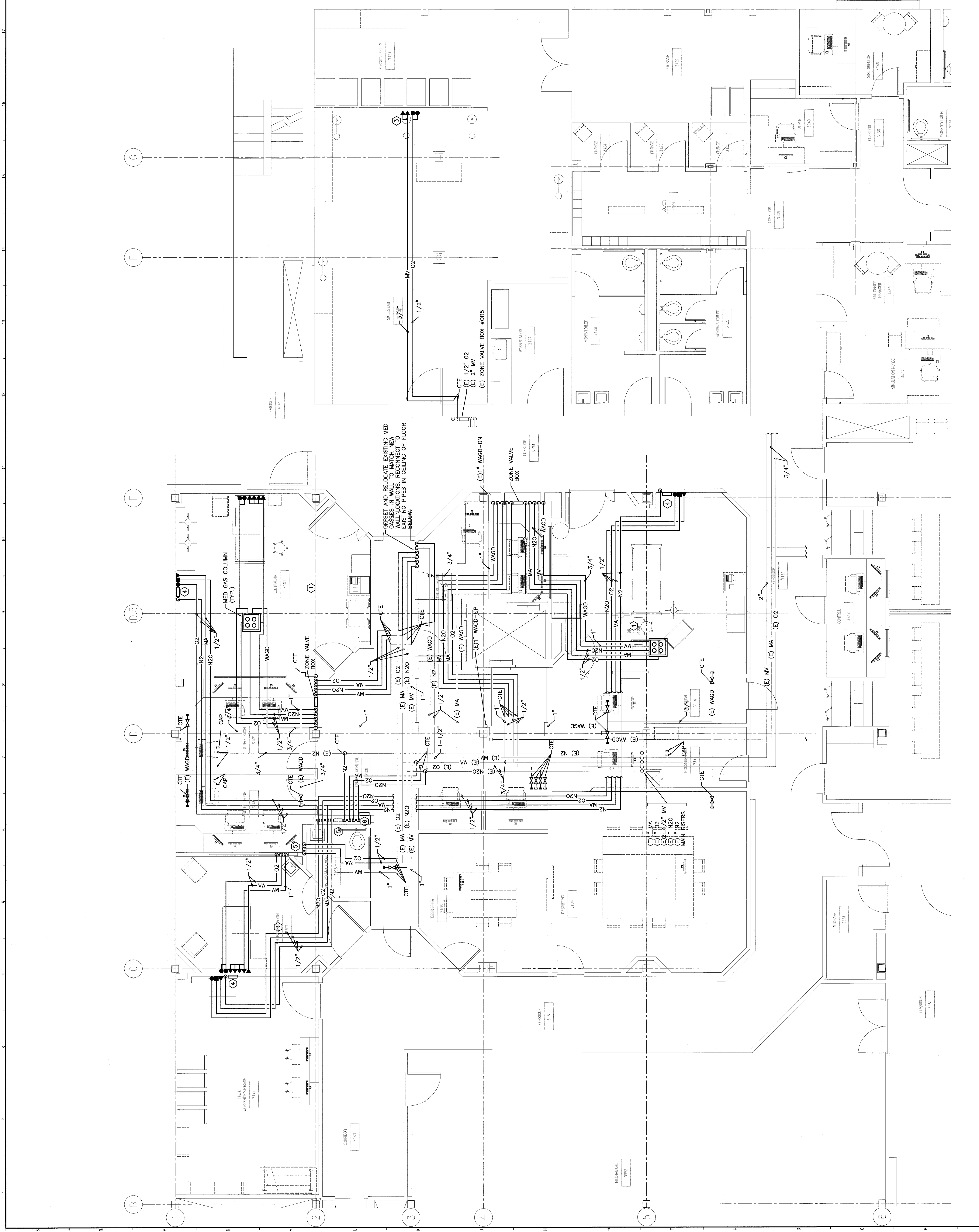


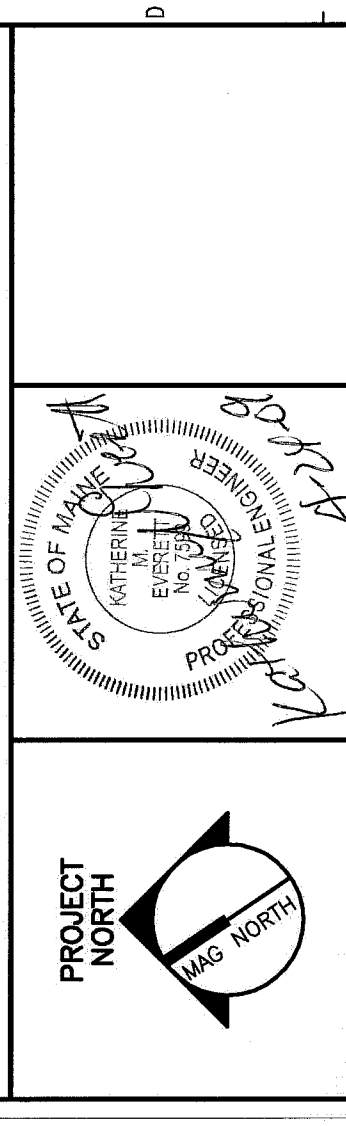
- NOTE:**
- SEE SHEET PLOT FOR LEGEND AND ABBREVIATIONS.
 - REFER TO DRAWING A-001 FOR DEFINITION OF ALTERNATES.

- KEYED NOTES:**
- ① GAS FOR MANEUVER GENERATION SHALL BE SUPPLIED BY PORTABLE TANK PROVIDED WITH S/M EQUIPMENT.
 - ② WIRE NEW ZONE VALVE BOX SENSORS TO EXISTING MED GAS ALARM PANEL.
 - ③ COORDINATE LOCATION OF THE NEW OUTLETS WITH OWNER.
 - ④ NITROGEN CONTROL PANEL.
 - ⑤ ZONE VALVE BOX.
 - ⑥ MED GAS ALARM PANEL.



F18 KEY PLAN	
REV.	DATE
0	4-24-09
ISSUED FOR CONSTRUCTION	
DESCRIPTION	

ISSUED FOR CONSTRUCTION
4-24-09



SMRTI
ARCHITECTURE
ENGINEERING
PLANNING
INTERIOR DESIGN
COMMISSIONING

141 Pine Street, Box 618
Portland, Maine 04104
Tel: (207) 770-3846
Fax: (207) 770-3870
www.smrti.com

MAINE MEDICAL CENTER
OFFICE OF MEDICAL EDUCATION
PORTLAND, MAINE
THIRD FLOOR AREA A
MED GAS PIPING PLAN

SHEET TITLE	SCALE	DATE	PROJECT NO.
THIRD FLOOR AREA A MED GAS PIPING PLAN	1/4"=1'-0"	4-24-09	08093-00
PROJECT MANAGER	DATE	GRAPHIC SCALE	SHEET NO.
CP	4-24-09	0'	PL121
DESIGNER	DATE	PROJECT NO.	08093-00
CHKD	DATE	SHEET NO.	PL121
APP'D	DATE	PROJECT NO.	08093-00

A1 THIRD FLOOR PLAN

1/4"=1'-0"