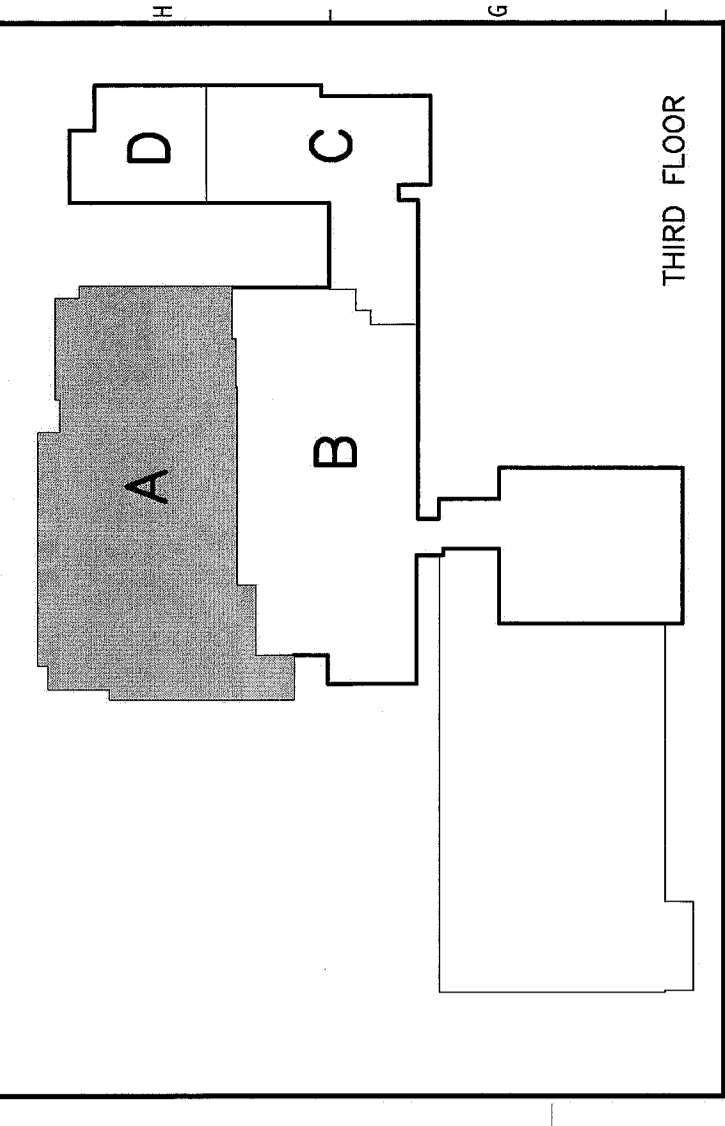
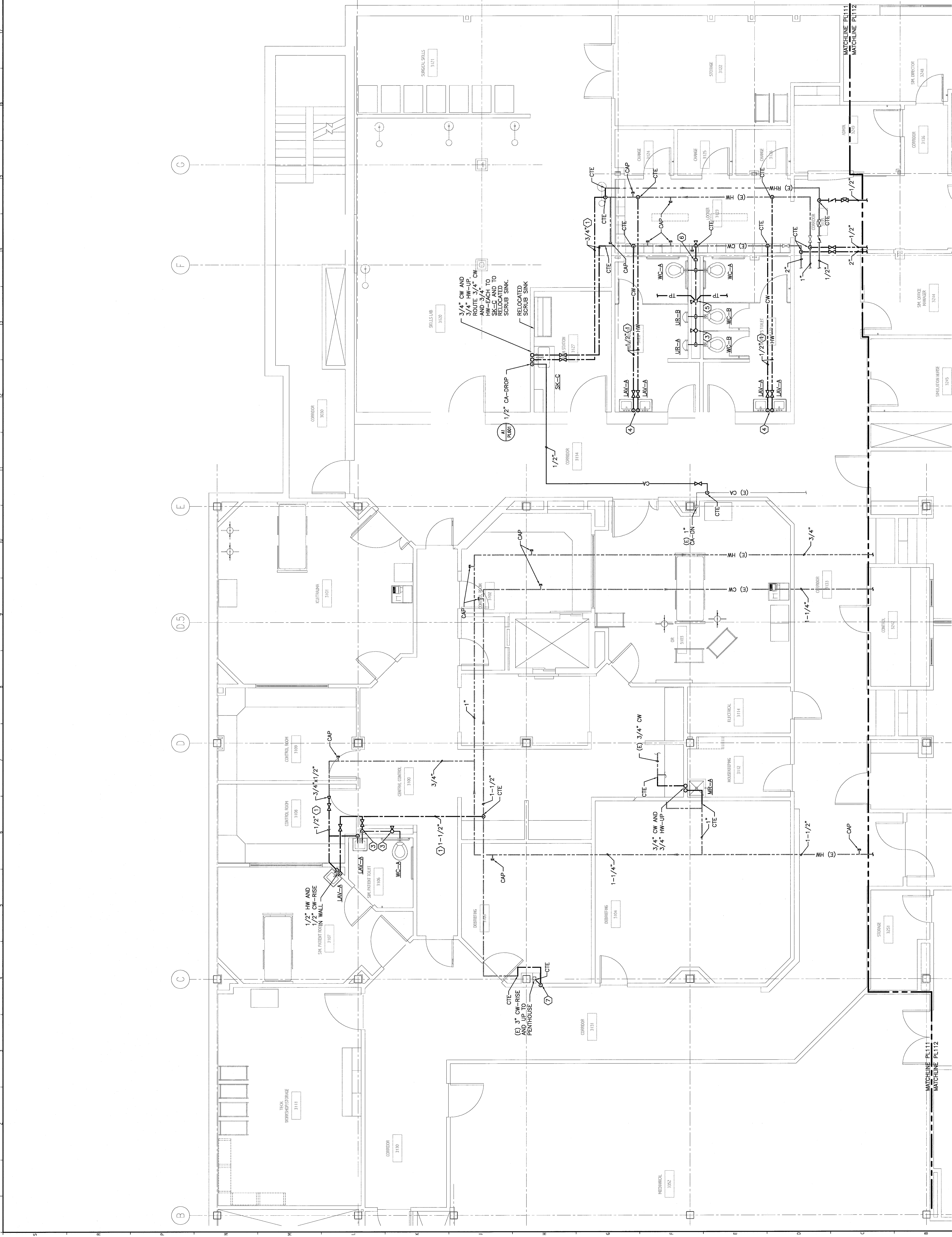


- NOTE:**
- SEE SHEET PL01 FOR LEGEND AND ABBREVIATIONS.
 - REFER TO DRAWING A-001 FOR DEFINITION OF ALTERNATES.

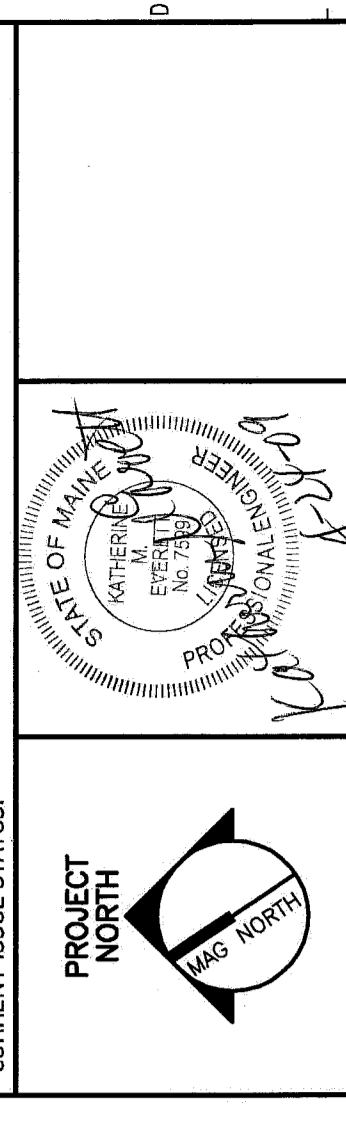
- KEYED NOTES:**
- PIPING LOCATED IN CEILING OF FLOOR BELOW.
 - 1-1/2" CW AND 1/2" HW-RISE IN CHASE. ROUTE 1/2" CW AND 1/2" HW-EACH TO LAV-A. ROUTE 1" CW TO WC-A. PROVIDED A WATER HAMMER ARRESTOR WITH SHUT-OFF VALVE-ACCESSIBLE.
 - 1/2" CW AND 1/2" HW-RISE IN WALL. ROUTE 1/2" CW AND 1/2" HW-EACH TO EACH LAV-A.
 - 1/2" CW-DROPS TO TRAP PRIMER VALVE. SEE DETAIL 44/P1501-SIMLAR.
 - 2" CW-RISE IN CHASE AND RUN FULL-SIZE. ROUTE 1" CW TO EACH WC. ROUTE 3/4" CW TO EACH WC.
 - OFFSET 3" CW-RISE INTO NEW CHASE AND CONNECT TO EXISTING 3" CW PIPING.



F18 KEY PLAN

REV.	DESCRIPTION	DATE
0	ISSUED FOR CONSTRUCTION	4-24-09

ISSUED FOR CONSTRUCTION
4-24-09



SMRTI
ARCHITECTURE
ENGINEERING
PLANNING
INTERIOR DESIGN
COMMISSIONING

144 Fore Street, Box 618
Portland, Maine 04104
Tel: (207) 723-8486
Fax: (207) 722-8070
www.smrti.com

MAINE MEDICAL CENTER
OFFICE OF MEDICAL EDUCATION
PORTLAND, MAINE

THIRD FLOOR AREA A
SUPPLY PIPING PLAN

SHEET TITLE	1/4"=1'-0"	DATE	4-24-09
PROJECT MANAGER	CDP	GRAPHIC SCALE	0' 1"
JOB CAP/DRWING	CM/HFB		
DATE OF RECORD	RME	SHEET No.	PL111
PROJECT No.	PL111-08093		
	08093-000		

A1 THIRD FLOOR PLAN

1/4"=1'-0"