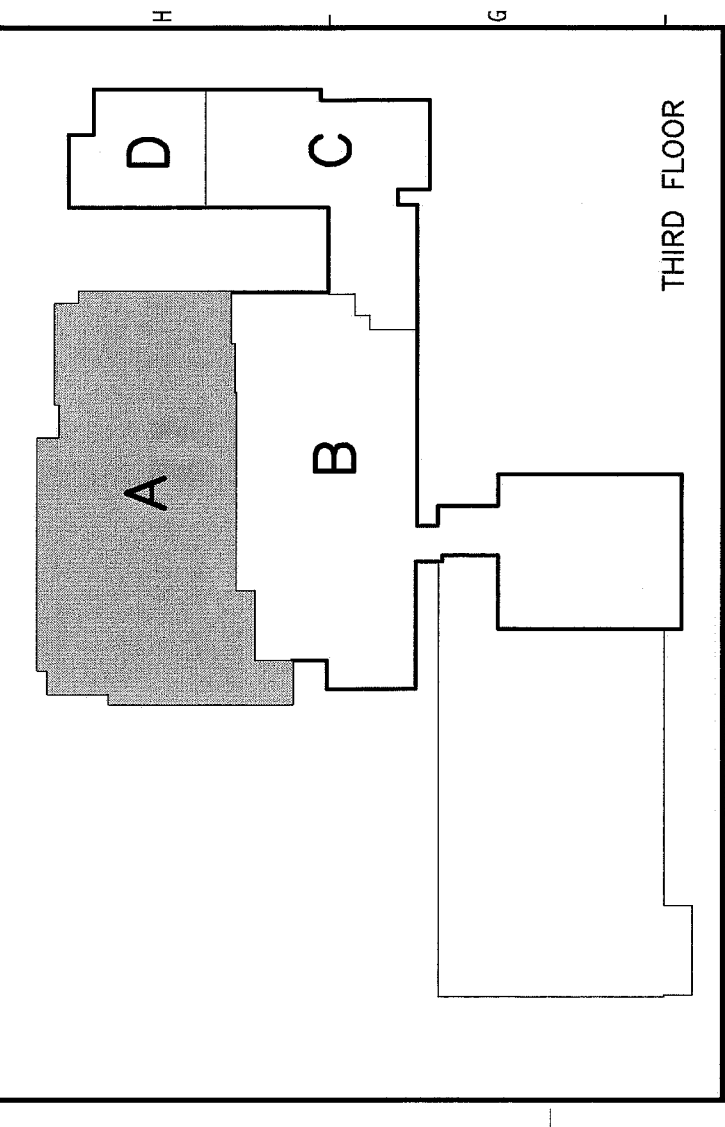
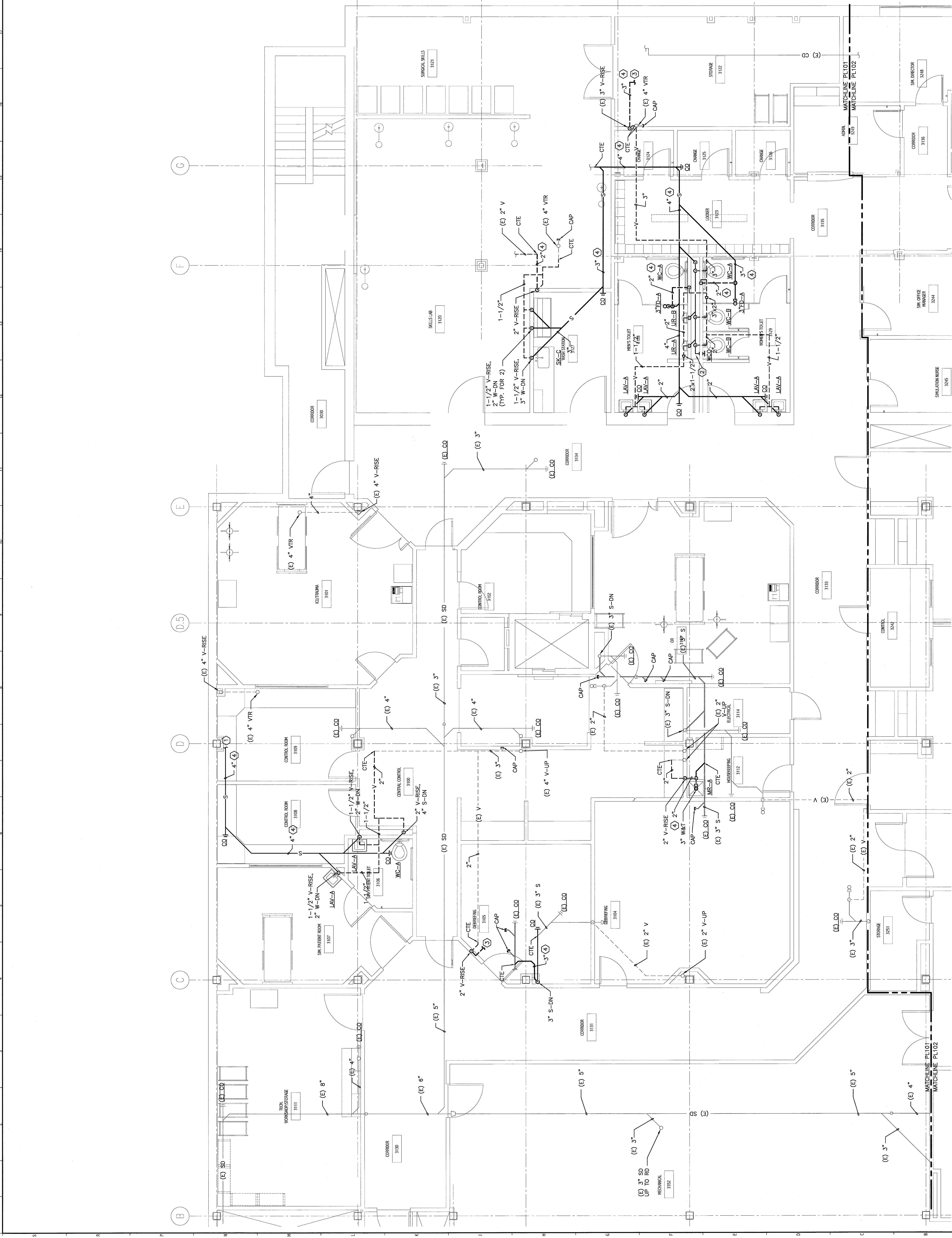


**NOTE:**  
 1. SEE SHEET PLOT1 FOR LEGEND AND ABBREVIATIONS.  
 2. REFER TO DRAWING A-001 FOR DEFINITION OF ALTERNATES.

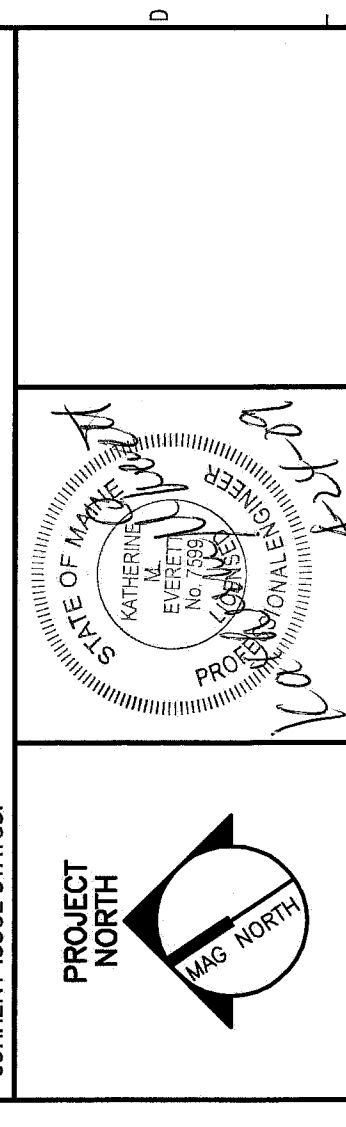
**KEYED NOTES:**  
 ① DROP 4" S PIPING IN CHASE AND CONNECT TO EXISTING 4" S.  
 ② 2" V-RISE AND 2" S, 2" V-RISE AND 4" S, 2" V-RISE AND 4" S, 2" V-RISE AND 4" S, ② 2" V-RISE, 2" V-RISE AND 4" S, 4" S-DN.  
 ③ CTE VENT IN CEILING OF FLOOR BELOW.  
 ④ PIPING LOCATED IN CEILING OF FLOOR BELOW.



**F18 KEY PLAN**

REV.	ISSUED FOR CONSTRUCTION	DATE
0		4-24-09

**ISSUED FOR CONSTRUCTION**  
 4-24-09



**PROJECT NORTH**  
 ARCHITECTURE  
 ENGINEERING  
 PLANNING  
 INTERIOR DESIGN  
 COMMISSIONING

**SMART**  
 MAINE MEDICAL CENTER  
 OFFICE OF MEDICAL EDUCATION  
 PORTLAND, MAINE

144 Fore Street P.O. Box 618  
 Portland, Maine 04104  
 Tel: (207) 762-3846  
 Fax: (207) 775-0100  
 www.smartinc.com

**THIRD FLOOR AREA A  
 PLUMBING PLAN**

SCALE:	1/4"=1'-0"	DATE:	4-24-09
PROJECT MANAGER:	CP	GRAPHIC SCALE:	0' 1'
JOB CAPTAIN/WR:	CH/WR		
DATE OF RECORD:	RNE	SHEET No.:	PL101
SHEET CAD FILE:	PL101-08093		
PROJECT No.:	08093-00		

A1	THIRD FLOOR PLAN
1/4"=1'-0"	