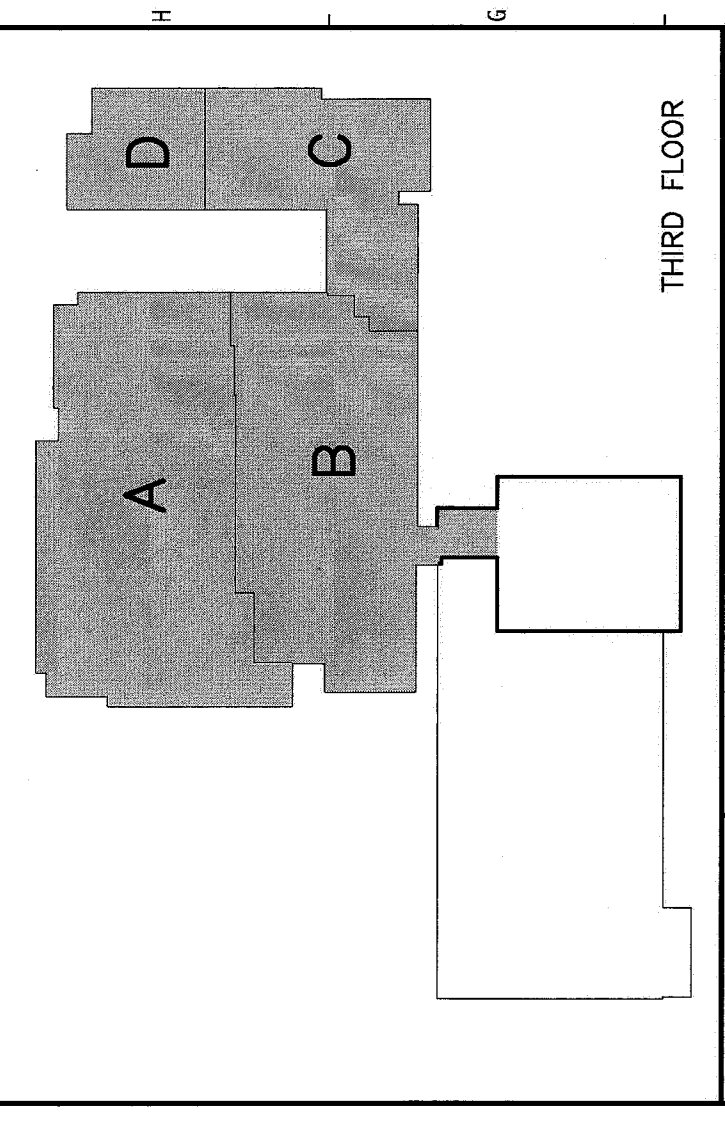
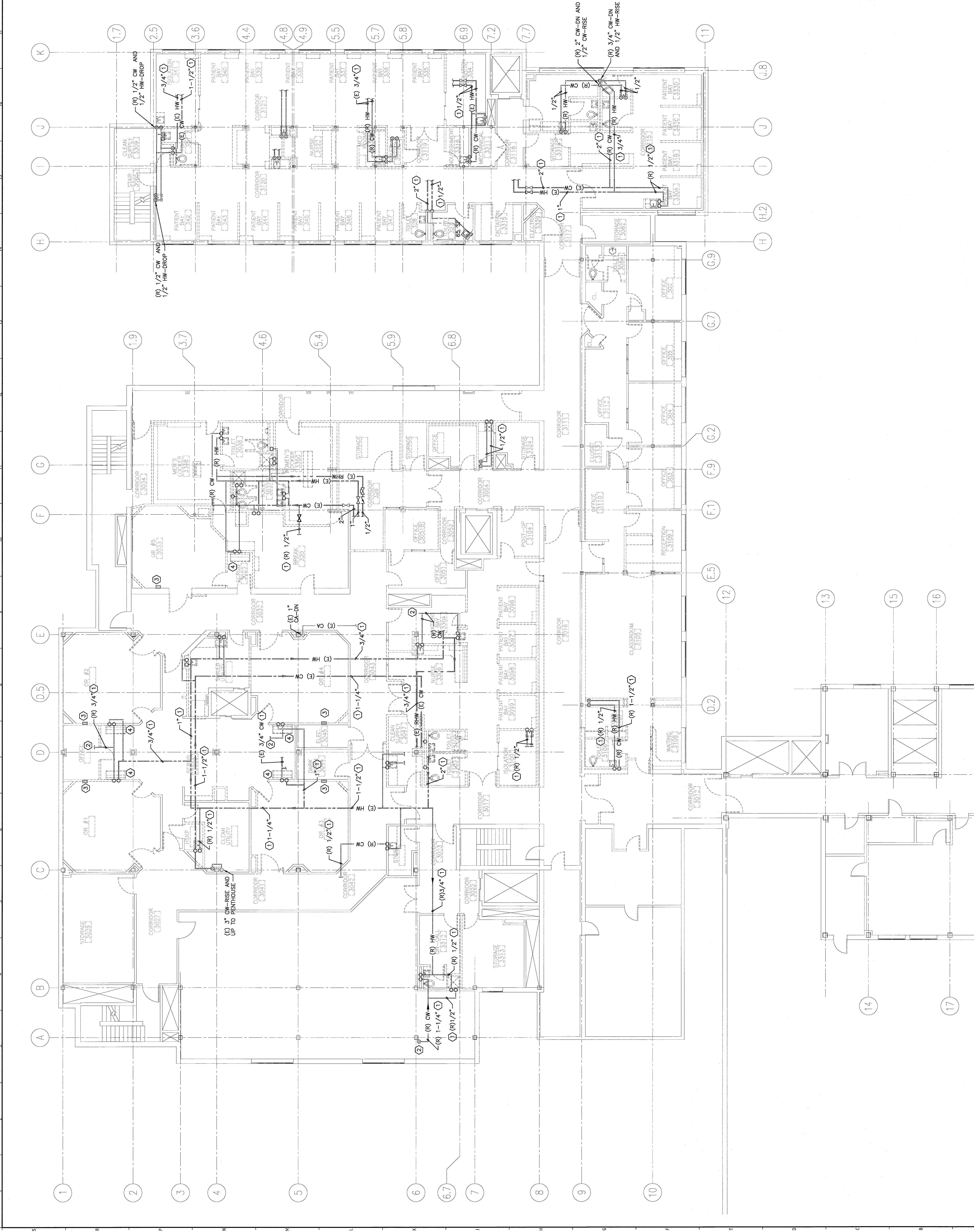


NOTES:

1. SEE SHEET PLOT FOR LEGEND AND ABBREVIATIONS.
2. REMOVE PLUMBING FIXTURES INDICATED TO BE REMOVED. UNLESS OTHERWISE NOTED, REMOVE EXISTING CW AND HW PIPING TO WITHIN 4" OF MAINS AND CAP.
3. REMOVE COMPRESSED AIR PIPING TO AIR OPERATED DOORS TO WITHIN 4" OF MAINS AND CAP.
4. REFER TO DRAWING A-001 FOR DEFINITION OF ALTERNATES.

KEYED NOTES:

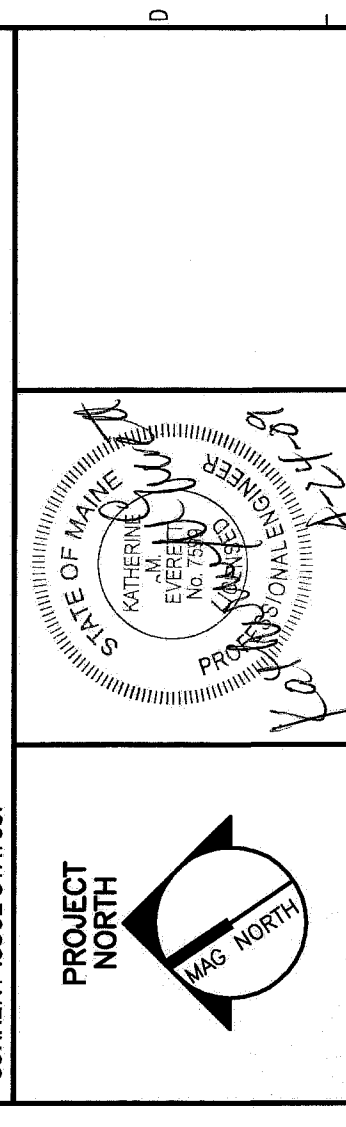
- ① PIPING LOCATED IN CEILING OF THE FLOOR BELOW.
- ② REMOVE PIPING BACK TO WITHIN 4" OF MAIN IN CHASE AND CAP.
- ③ REMOVE DIALYSIS MACHINE WALL BOX AND ALL ASSOCIATED PIPING AND COMPONENTS-COMPLETE.
- ④ TAKE CARE WHEN REMOVING PLUMBING FIXTURE, SUPPORT AND/OR PIPING TO BE RELOCATED. COORDINATE WITH OWNER. SEE PL111 FOR NEW LOCATION.



F18 KEY PLAN

REV.	ISSUED FOR CONSTRUCTION	DATE
0		4-24-09

ISSUED FOR CONSTRUCTION
4-24-09



PROJECT NORTH
ARCHITECTURE
ENGINEERING
PLANNING
INTERIOR DESIGN
COMMISSIONING
SMART
MAINE MEDICAL CENTER
OFFICE OF MEDICAL EDUCATION
PORTLAND, MAINE

THIRD FLOOR PLUMBING
SUPPLY DEMOLITION PLAN

SHEET TITLE	1/8"=1'-0"	DATE	4-24-09
SCALE	GRAPHIC SCALE	0'	1'
PROJECT MANAGER	CDP		
JOB CAPTAIN	CH/BA		
DATE OF RECORD	RNE		
SMART CAD FILE	PD11-00093	SHEET NO.	PD111
PROJECT NO.	08093-00		

A1 THIRD FLOOR FACILITY DEMOLITION PLAN

1/8"=1'-0"