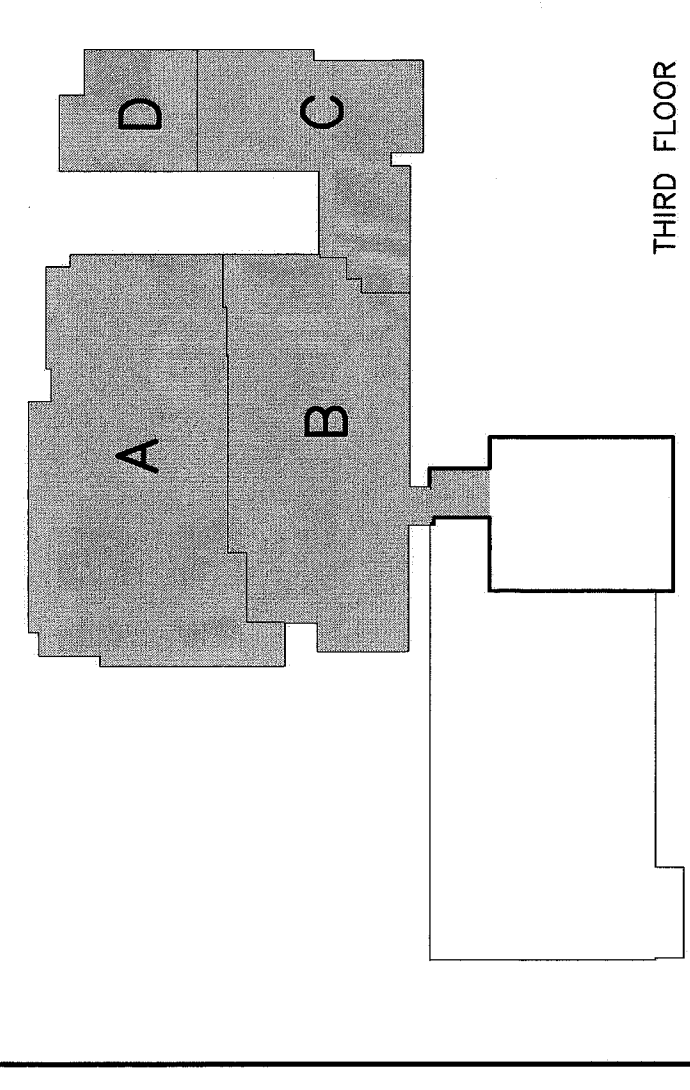
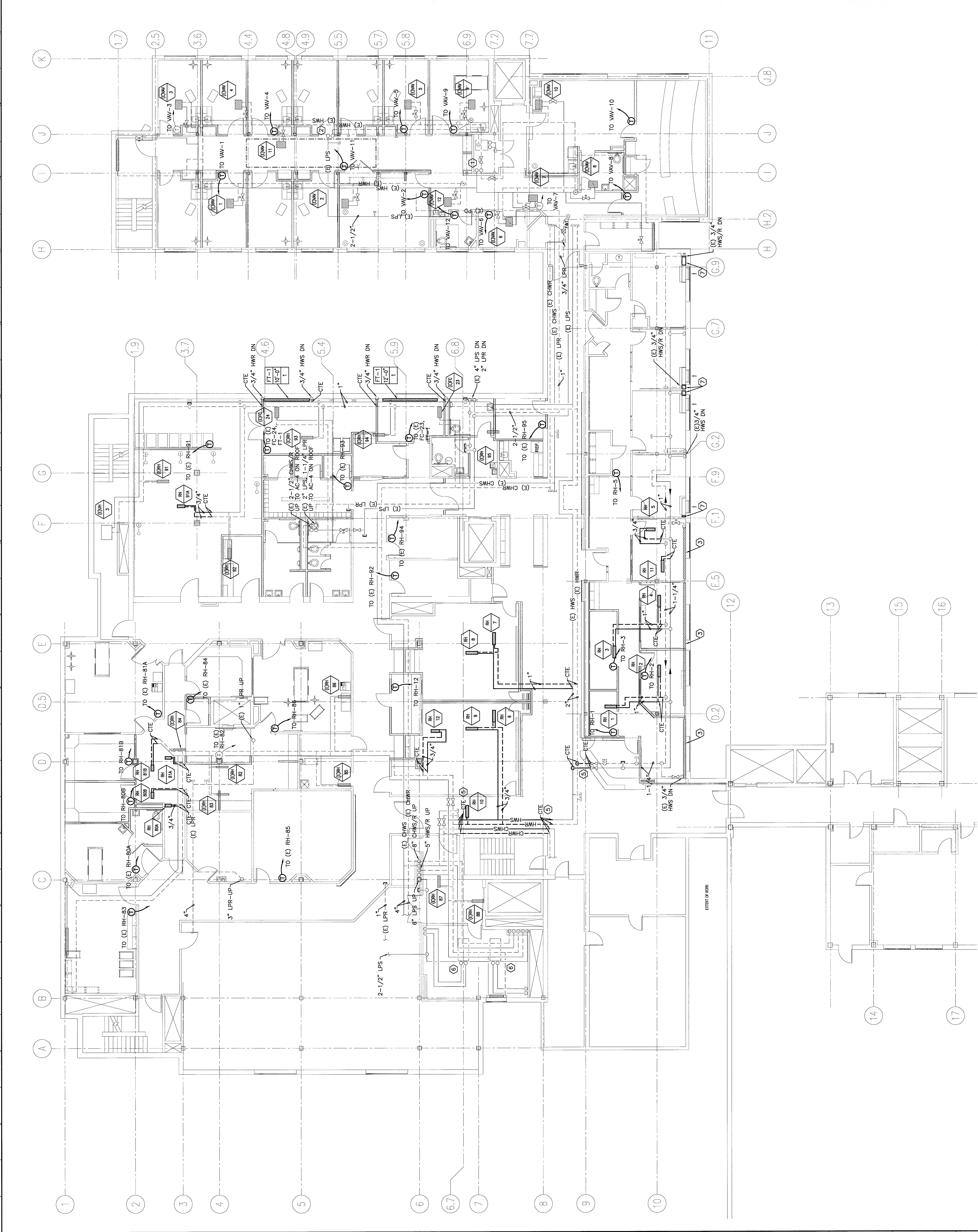


- NOTE:**
- SEE SHEET M-001 FOR LEGEND AND ABBREVIATIONS.
  - REFER TO DRAWING A-001 FOR DEFINITION OF ALTERNATES.

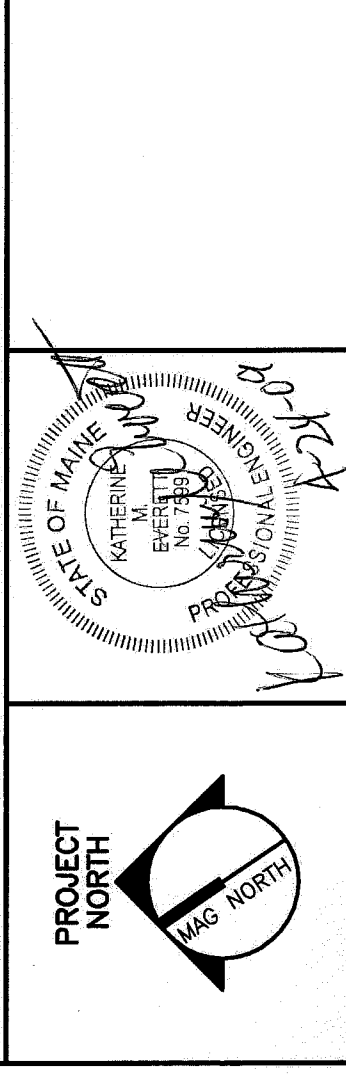
- KEYED NOTES:**
- EXISTING 2" HWS/R DN.
  - EXISTING 2-1/2" LFS, 1-1/4" LPR UP TO [EQU] ON ROOF.
  - EXISTING FUTURE RADIATION TO REMAIN. CONTRACTOR TO PROVIDE NEW FRONT ENCLOSURES AND EXTEND AS NECESSARY TO MEET PARTITION WALL. (INCLUDE IN BASE BID)
  - NOT USED.
  - OFFSET PIPING DOWN TO CROSS NEW STEEL.
  - 1/2" RL, 1-1/2" RS UP TO [EQU]. [EQU] ON ROOF.
  - PROVIDE A SHEET METAL ENCLOSURE BETWEEN EXISTING PTAC UNIT AND ADJACENT WALL TO COVER EXPOSED PIPING. PREPARE WALL SURFACE WITH SMOOTH FINISH AND PROVIDE ACCESS PANELS. WALLS TO BE PAINTED TO MATCH EXISTING WALL COLOR. COORDINATE WITH ARCHITECT.



F18 KEY PLAN

REV.	ISSUED FOR CONSTRUCTION	DATE
0		4-24-09

ISSUED FOR CONSTRUCTION  
4-24-09



PROJECT: MAINE MEDICAL CENTER  
ARCHITECTURE  
PLANNING  
INTERIOR DESIGN  
COMMISSIONING

SMRTI  
MAINE MEDICAL CENTER  
OFFICE OF MEDICAL EDUCATION  
PORTLAND, MAINE

THIRD FLOOR HVAC  
PIPING PLAN

SCALE	1/8"=1'-0"	DATE	4-24-09
PROJECT MANAGER	CP	GRAPHIC SCALE	0'
DESIGNER	BAJ/OL		
DATE OF RECORD	RNE	SHEET No.	MP101
SHEET CAD FILE	MP101-08093		
PROJECT No.	08093-00		

A1 THIRD FLOOR FACILITY PLAN

1/8"=1'-0"