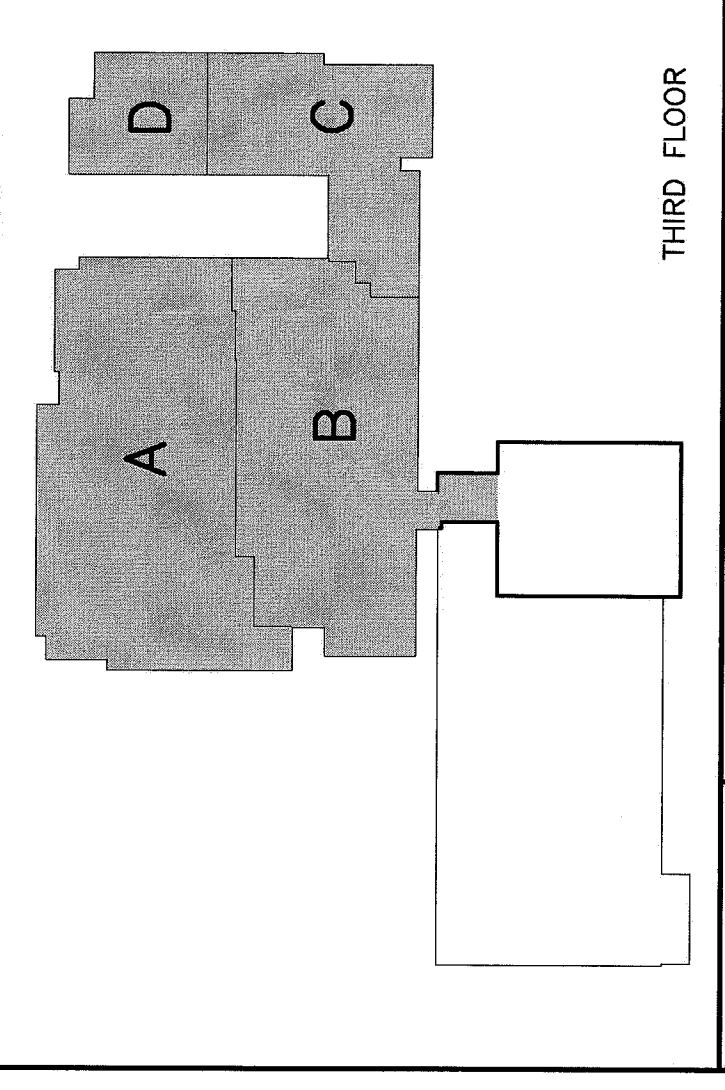
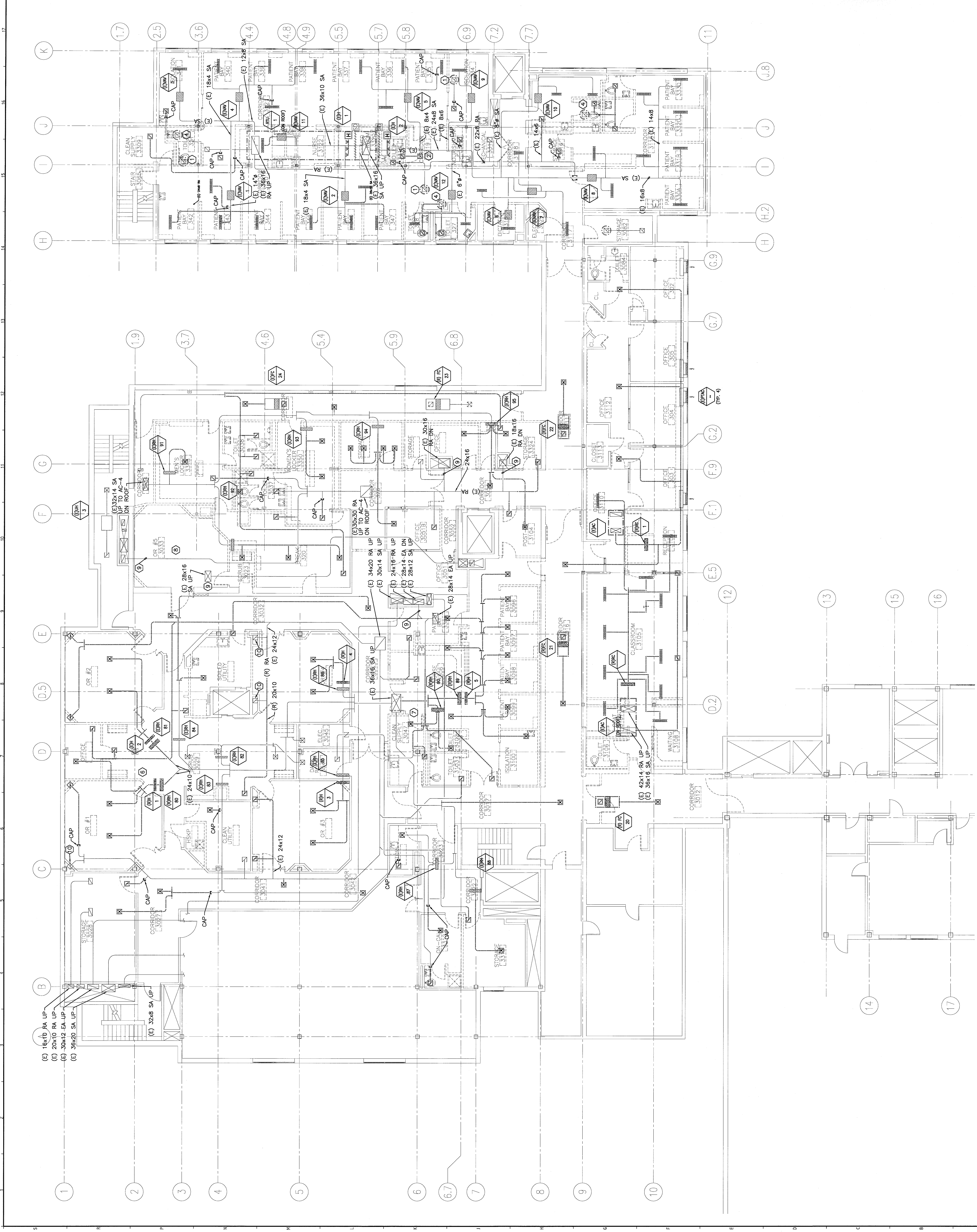


- NOTE:**
- SEE SHEET M-001 FOR LEGEND AND ABBREVIATIONS.
 - REFER TO DRAWING A-001 FOR DEFINITION OF ALTERNATES.

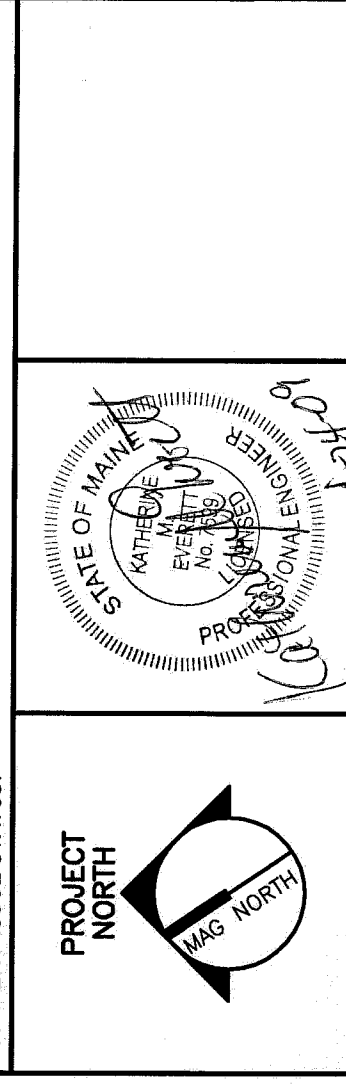
KEYED NOTES:

- REMOVE EXHAUST GRILLE. CUT AND CAP 10x4 EA DUCT ABOVE CEILING. ROOF MOUNTED FAN TO REMAIN (DISABLED).
- REMOVE TRANSFER GRILLES AND ASSOCIATED DUCTWORK.
- REMOVE EXHAUST GRILLE. CUT AND CAP 8x4 EA DUCT ABOVE CEILING. ROOF MOUNTED FAN E2-3 TO REMAIN (GRILLES).
- REMOVE EXHAUST GRILLE. REMOVE EA DUCT AS INDICATED. CONNECT NEW EA DUCT AS SHOWN ON NEW CONDITIONS PLAN.
- EXISTING ROOF MOUNTED FAN E2-7 AND ASSOCIATED EA DUCT AND GRILLE SHALL REMAIN.
- REMOVE EXISTING DUCT MOUNTED HUMIDIFIER AND ALL ASSOCIATED CONTROLS. REMOVE STEAM AND CONDENSATE PIPING BACK TO NEAREST MAIN AND CAP.
- REMOVE EXISTING SUPPLY, RETURN AND EXHAUST AIR AND CONTROLS SERVING OR #5. INDICATED ON NEW CONDITIONS PLAN.
- REMOVE ALL EXISTING SUPPLY DIFFUSERS, RETURN GRILLES, REHEAT COIL, HUMIDIFIER AND ALL ASSOCIATED DUCTWORK.
- MECHANICAL CONTRACTOR SHALL MEASURE AND RECORD AIRFLOW PRIOR TO ANY DEMOLITION. AIRFLOW SHALL BE SET CORRECT TO PRECONSTRUCTION BALANCE WHEN PROJECT IS COMPLETE.
- REMOVE EXISTING LOW RETURN GRILLES AND INSTALL NEW PER NEW CONDITIONS PLAN.



REV	ISSUED FOR CONSTRUCTION	DESCRIPTION	DATE
0			4-24-09

ISSUED FOR CONSTRUCTION
4-24-09



144 First Street, Box 618
Portland, Maine 04104
Tel: (207) 773-3846
Fax: (207) 775-0770
www.smrt.com

SMRT
MAINE MEDICAL CENTER
OFFICE OF MEDICAL EDUCATION
PORTLAND, MAINE

**THIRD FLOOR HVAC
DUCTWORK DEMOLITION PLAN**

SHEET TITLE:	THIRD FLOOR HVAC DUCTWORK DEMOLITION PLAN
SCALE:	1/8" = 1'-0" DATE: 4-24-09
PROJECT MANAGER:	CP
JOB CAP/WRNWR:	BAI
DATE OF RECORD:	RHE
SMRT CAD FILE:	MD101-08093
PROJECT NO.:	08093-00
SHEET NO.:	MD101

A1

1/8" = 1'-0"

THIRD FLOOR FACILITY PLAN