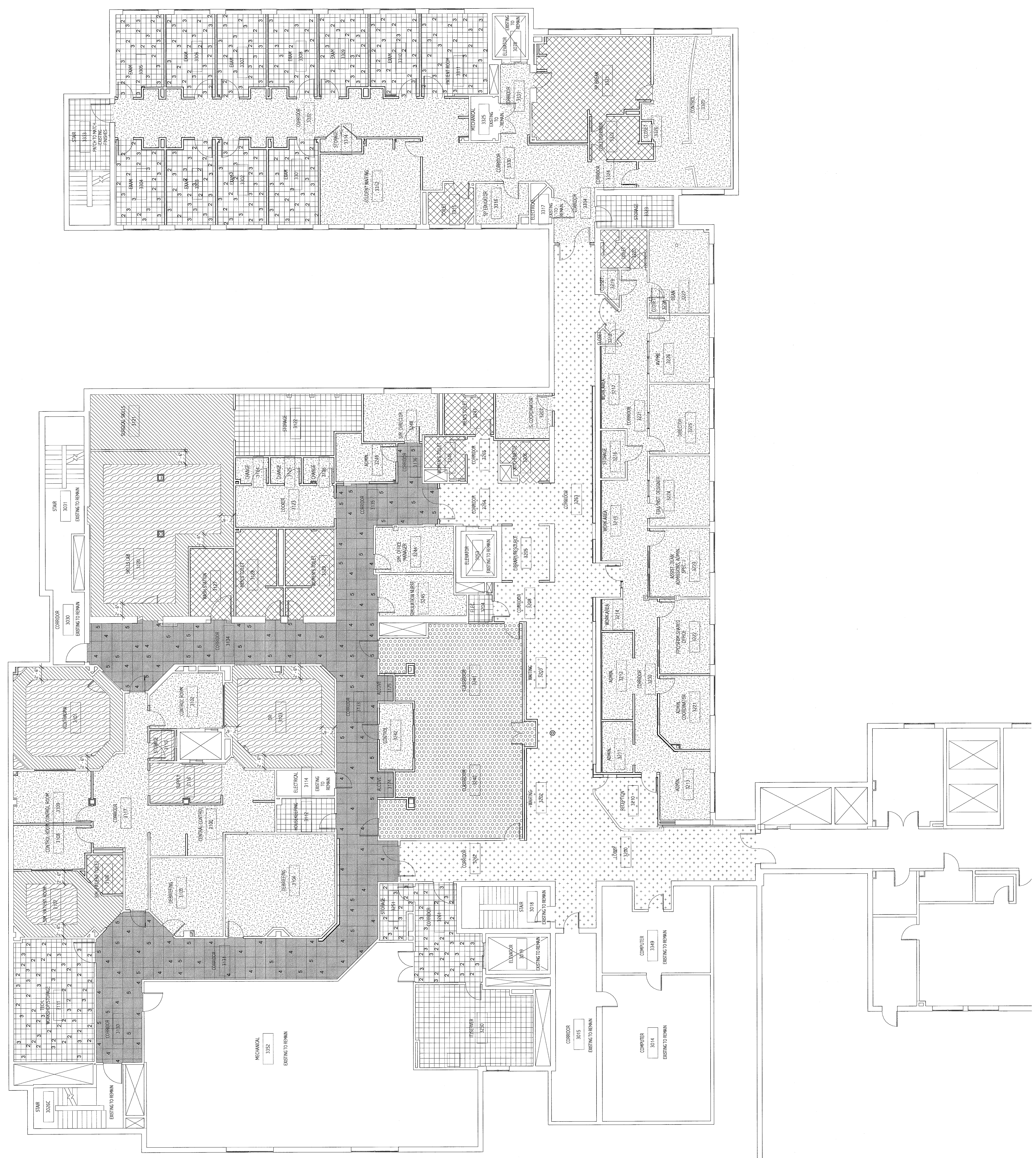


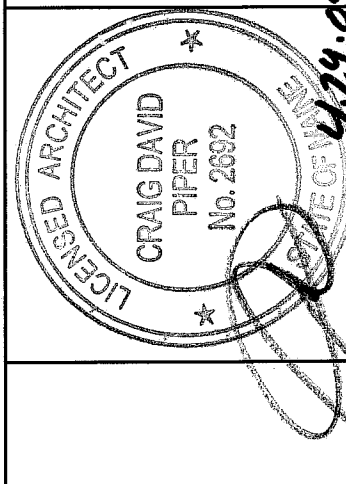
- FLOOR FINISH NOTES:**
1. REFER TO SHEET FOR ANY SPECIAL FINISH MATERIALS. REFER TO SCHEDULES FOR ACTUAL MATERIAL SIZES.
 2. ALL FINISHING TO AN IRON/PAINT CASEWORK UNLESS NOTED OTHERWISE.
 3. BACK SQUARE IN THE ACT FLOOR TILE GRID REPRESENTS A 2'x2'x1/2" TILE.
 4. BACK SQUARE IN THE NUMBERED TILE GRID REPRESENTS A 2'x2'x1/2" TILE. MAKE TILE TO BE CENTERED IN CORRIDOR. CUT TILES BEHIND A DOOR.

FLOOR MATERIAL LEGEND:

	CARPET (OPT-1)
	CARPET (OPT-2)
	CARPET (OPT-3)
	RUBBER SHEET (RUB-1)
	RUBBER SHEET (RUB-2)
	RUBBER TILE (RUB-3)
	RUBBER TILE (RUB-4)
	RUBBER TILE (RUB-5)
	VINYL COMPOSITION TILE (VCT-1)
	VINYL COMPOSITION TILE (VCT-2)
	VINYL COMPOSITION TILE (VCT-3)
	SHEET VINYL (SV-1)



ISSUED FOR CONSTRUCTION
4-24-09



144 Elm Street, Box 618
Portland, Maine 04101
Tel: (207) 752-0806
Fax: (207) 752-0806
www.sdmr.com

SDMR
Maine Medical Center - Office of Medical Education

THIRD FLOOR FINISH PLAN

SCALE:	1/8" = 1'-0"	DATE:	4-24-09
PROJECT MANAGER:	OSP	GRAPHIC SCALE:	0' 1'
DESIGNER/ARCHITECT:	JKK		
DATE OF RECORD:	OSP		
PROJECT NO.:	08093	SHEET NO.:	AF101

① THIRD FLOOR FINISH PLAN
1/8" = 1'-0"