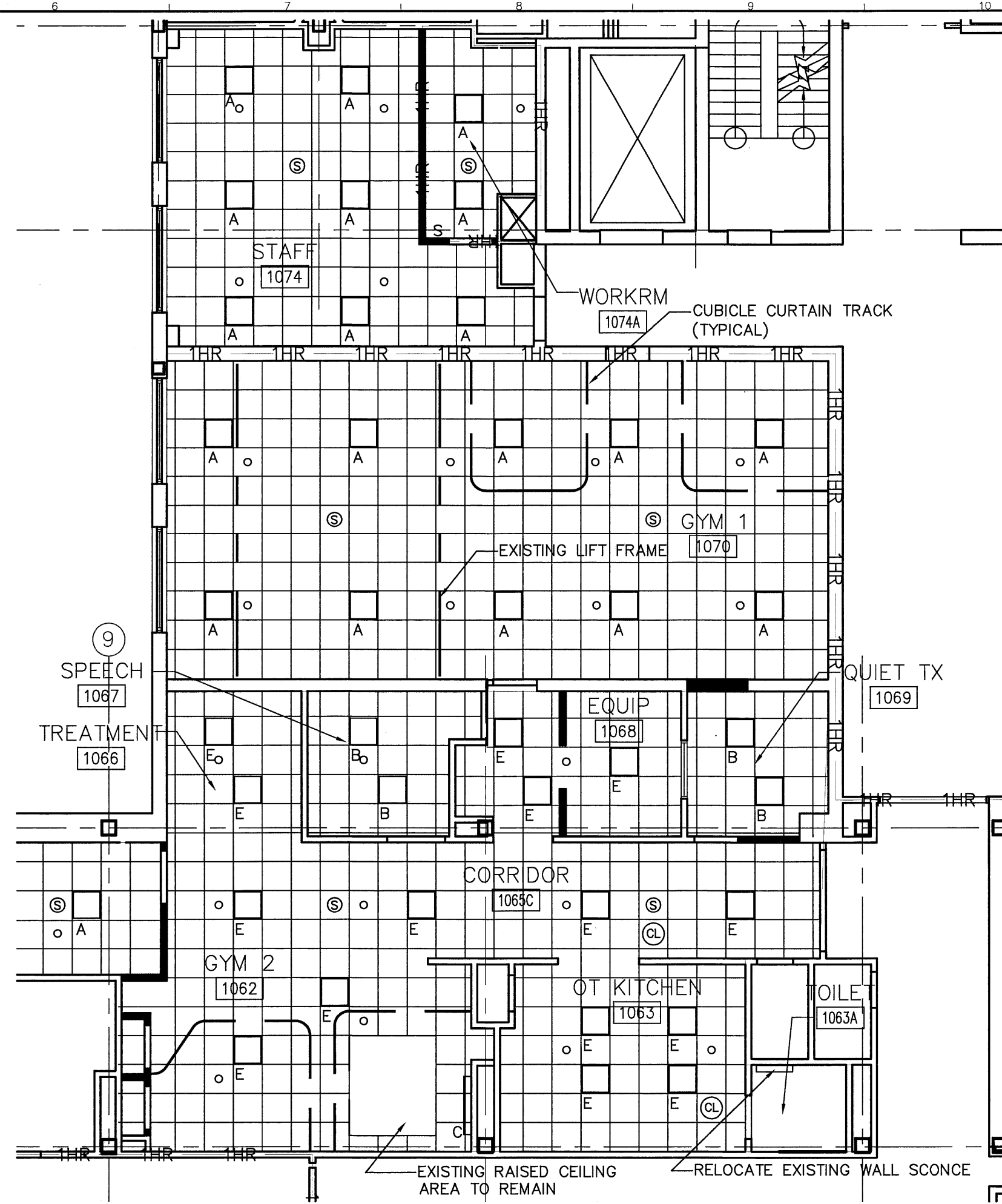


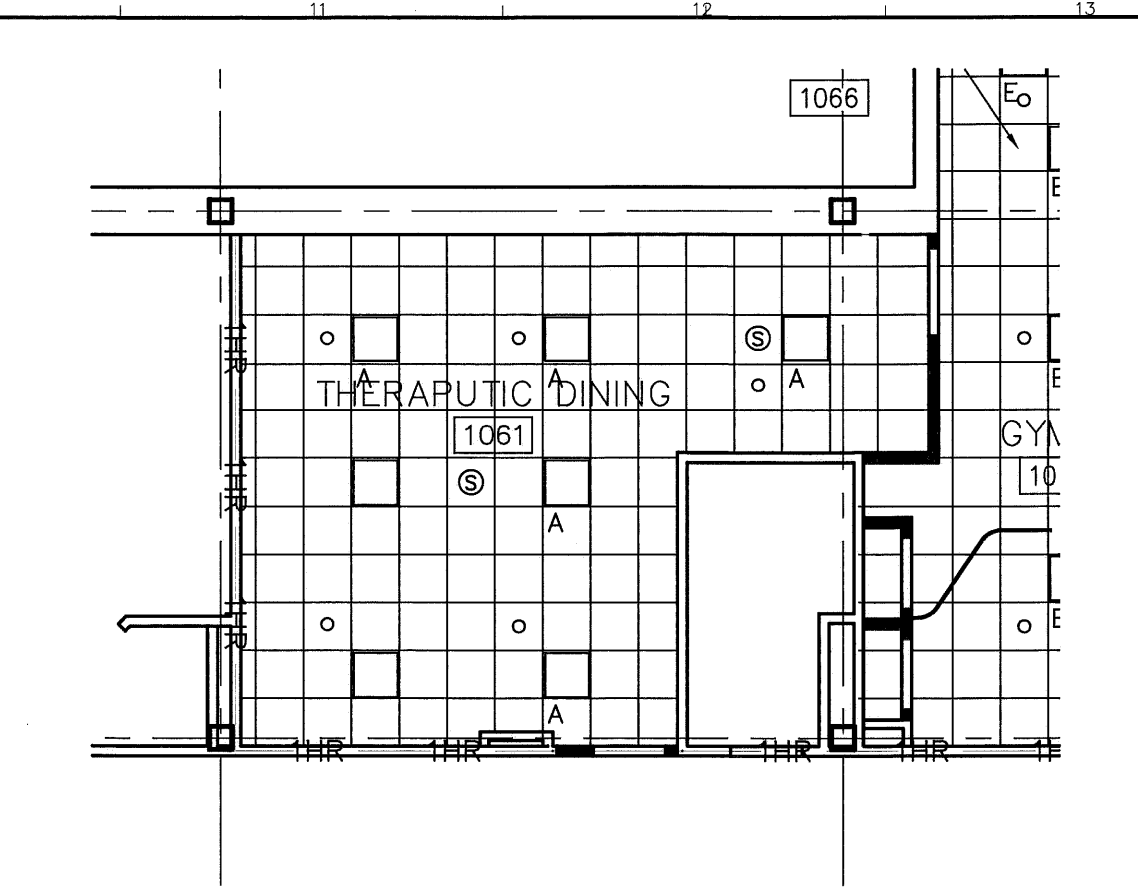
H1 FURNITURE PLAN (FOR REFERENCE)

N.T.S. FURNITURE N.I.C.



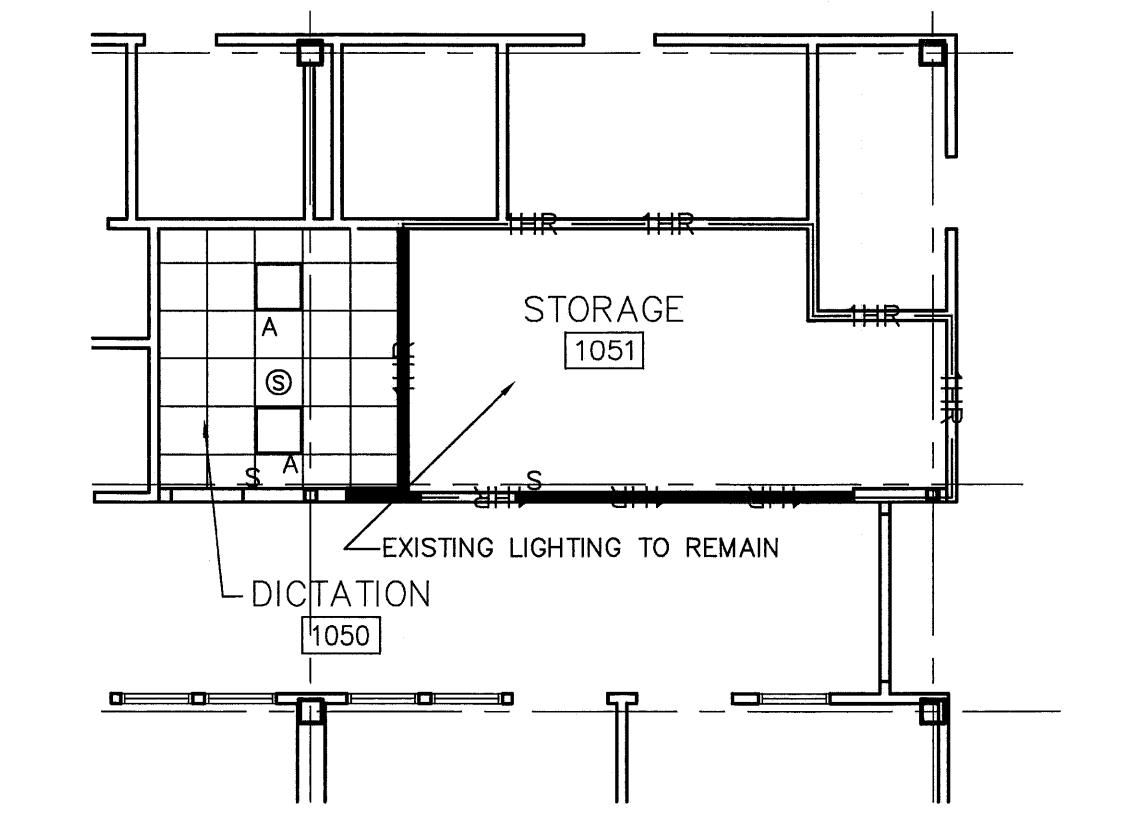
H7 LIGHTING PLAN (FOR REFERENCE)

1/8" = 1'-0"



L10 LIGHTING PLAN (FOR REFERENCE)

1/8" = 1'-0"



H10 LIGHTING PLAN (FOR REFERENCE)

1/8" = 1'-0"

ELECTRICAL NOTES:

- ELECTRICAL DESIGN IS BY DESIGN-BUILD SUBCONTRACTOR. LIGHT FIXTURE, LIGHT SWITCH, POWER, VOICE/ DATA AND NURSE CALL LOCATIONS ARE SHOWN TO COMMUNICATE DESIGN INTENT.
- CONVENIENCE POWER RECEPTACLE LOCATIONS ARE SHOWN.
- PROVIDE ROUGH-IN FOR VOICE/DATA TO INCLUDE: 1 GANG BACKBOX LOCATED AT 18" AFF WITH 3/4" CONDUIT STUBBED ABOVE THE CEILING. A RUBBER GASKET AND PULL STRING ARE NEEDED AT ALL BACKBOXES.
- RELOCATE NURSE CALL DUTY STATION FROM ROOM 1050 TO ROOM 1061. REMOVE ALL EXISTING HALL LIGHTS AND RETAIN (2) FOR REUSE AT LOCATIONS INDICATED ON LIGHTING PLAN.
- ROUGH-IN FOR WALL PHONES IS N.I.C. THESE WILL BE PROVIDED BY THE PHONE INSTALLER.
- RELOCATE EXISTING SPEAKERS TO LOCATIONS SHOWN IN LIGHTING PLAN. PROVIDE ADDITIONAL SPEAKERS AS NEEDED.
- LIGHT SWITCH LOCATIONS ARE EXISTING U.N.O. PROVIDE DUAL SWITCHING (TWO LIGHT LEVELS) AT ROOMS 1061, 1070 AND 1074. PROVIDE OCCUPANCY SENSORS AT ROOMS 1050, 1051, 1066, 1067, 1063, AND 1069.
- PROVIDE FIRE ALARM NOTIFICATION DEVICES, EXIT AND EMERGENCY LIGHTING PER CODE.

LIGHT FIXTURE SCHEDULE

FIXTURE TYPE A: LIGHTOLIER ALTER SOFT LIGHTS, 2 X 2 RECESSED DIRECT/INDIRECT FLUORESCENT. CATALOG NO: QVS-2-G-PF-OS-2-FT-120V-BE. CONTRACTOR TO VERIFY VOLTAGE AND BALLAST TYPE.

FIXTURE TYPE B: LIGHTOLIER ALTER SOFT LIGHTS, 2 X 2 RECESSED DIRECT/INDIRECT FLUORESCENT WITH DIMMING BALLAST. CATALOG NO: QVS-2-G-PF-OS-2-FT-120V-PC. CONTRACTOR TO VERIFY VOLTAGE AND BALLAST TYPE.

FIXTURE TYPE C: FINELITE SERIES 12 WALL MOUNT. CATALOG NO: S12WM-P-4'-215-SC-91W-120-SUR-FE.

FIXTURE TYPE D: NOT USED

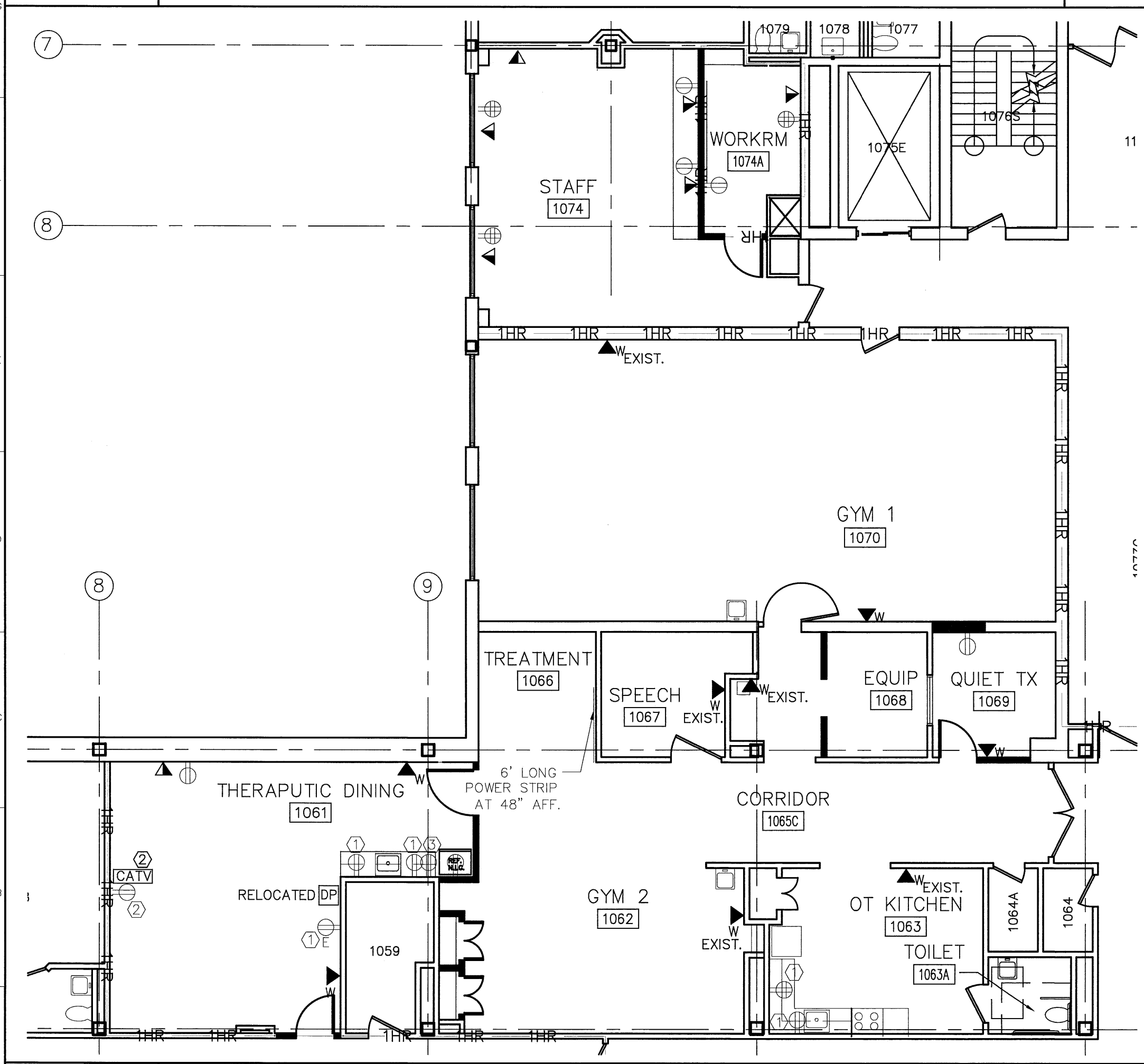
FIXTURE TYPE E: COLUMBIA ZERO PLENUM TROFFER WITH METAL DIFFUSER. CATALOG NO: ZPT 22-2280-PRF-EPU.

POWER/SYSTEMS/LIGHTING KEY:

- 2X2 FLUORESCENT FIXTURE
- DOWNLIGHT
- WALL SCENCE
- WALL SWITCH
- SPEAKER
- NURSE CALL HALL LIGHT
- APPROX. SPRINKLER HEAD LOCATION SHOWN FOR COORDINATION PURPOSES
- DUPLEX RECEPTACLE
- DUPLEX RECEPTACLE ON EMERGENCY POWER
- DOUBLE DUPLEX (QUAD) RECEPTACLE
- VOICE/DATA OUTLET
- WALL PHONE
- NURSE CALL DUTY STATION
- CABLE TV

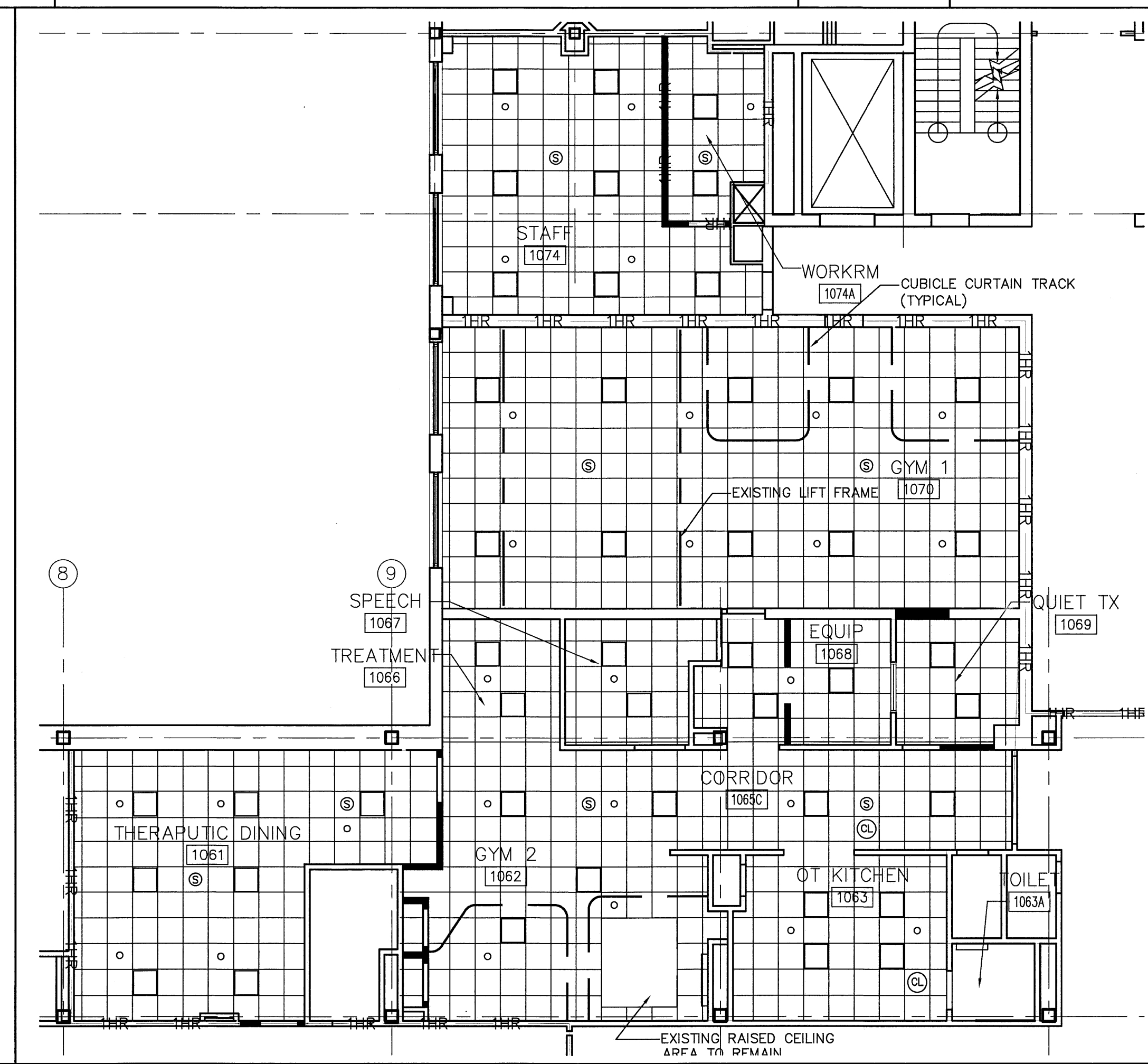
ELECTRICAL KEYED NOTES:

- ① INSTALL AT 48" AFF.
- ② INSTALL AT 72" AFF
- ③ INSTALL INSIDE UPPER CASEWORK



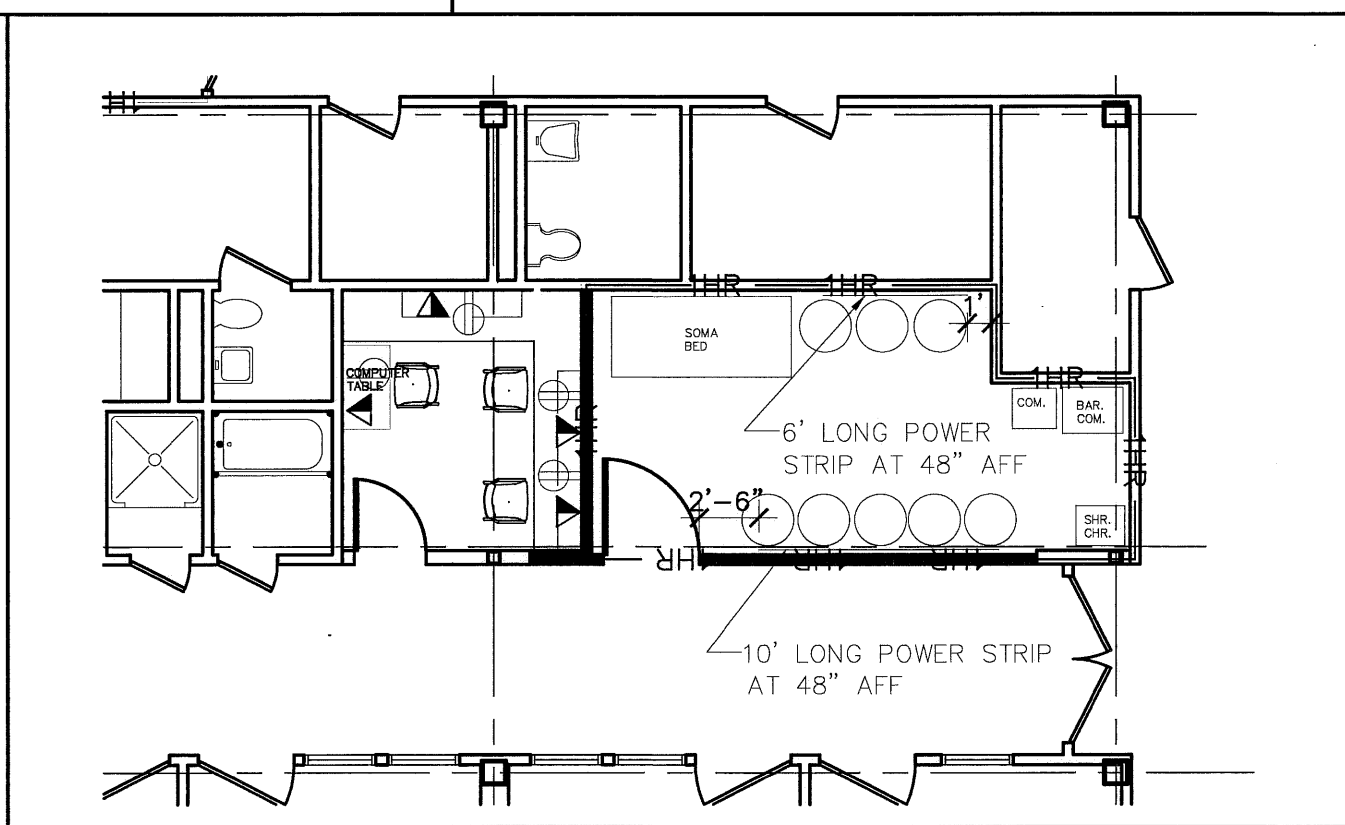
A1 ELECTRICAL POWER AND SYSTEMS PLAN

1/8" = 1'-0" (FOR REFERENCE)



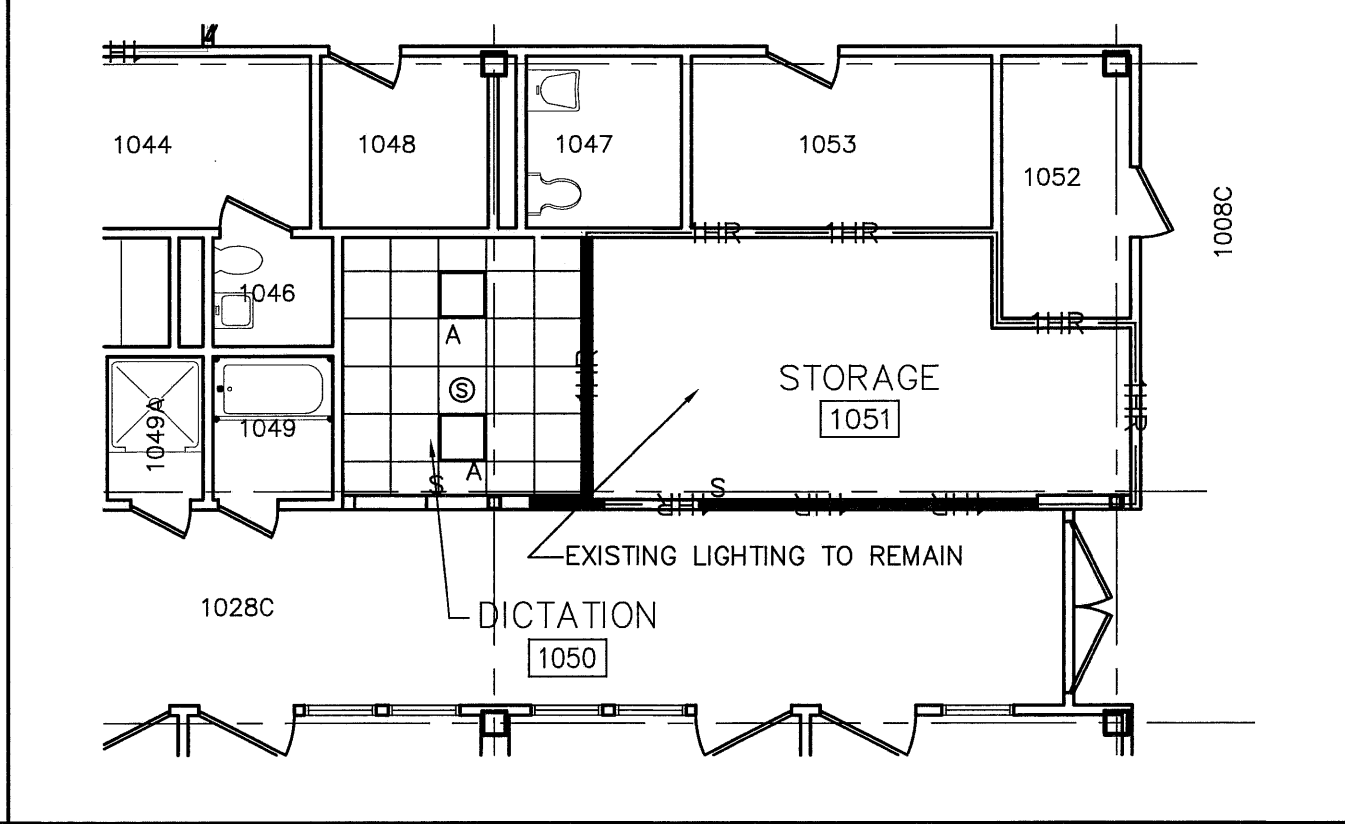
A6 GYM AREA REFLECTED CEILING PLAN

1/8" = 1'-0"



D12 NURSING UNIT FURN/ POWER/SYSTEMS

1/8" = 1'-0" (FOR REFERENCE) FURNITURE N.I.C.



A12 NURSING UNIT REFLECTED CLG/ LTG PLAN

1/8" = 1'-0"

REV.	DESCRIPTION	DATE
0	ISSUED FOR CONSTRUCTION	12/12/08

ISSUED FOR CONSTRUCTION 12/12/08

CURRENT ISSUE STATUS:

PROJECT NORTH

LICENSED ARCHITECT
CAROL R. GILLIS
No. 2641
Carol R. Gillis
STATE OF MAINE

DESIGN GROUP COLLABORATIVE
ARCHITECTURE
DESIGN + PLANNING
22 FREE STREET
PORTLAND, MAINE 04101
(207) 699-3300

NEW ENGLAND REHABILITATION HOSPITAL OF PORTLAND
FIRST FLOOR GYM RENOVATIONS
PORTLAND, MAINE

REFLECTED CEILING AND REFERENCE PLANS

SHEET TITLE: REFLECTED CEILING AND REFERENCE PLANS

DATE: 12/12/08 GRAPHIC SCALE: 0" = 1'-0"

SCALE: AS NOTED

PROJECT NO. DB003 SHEET NO. AE 102

DRAWN BY: CFG

A/E OF RECORD: CFG