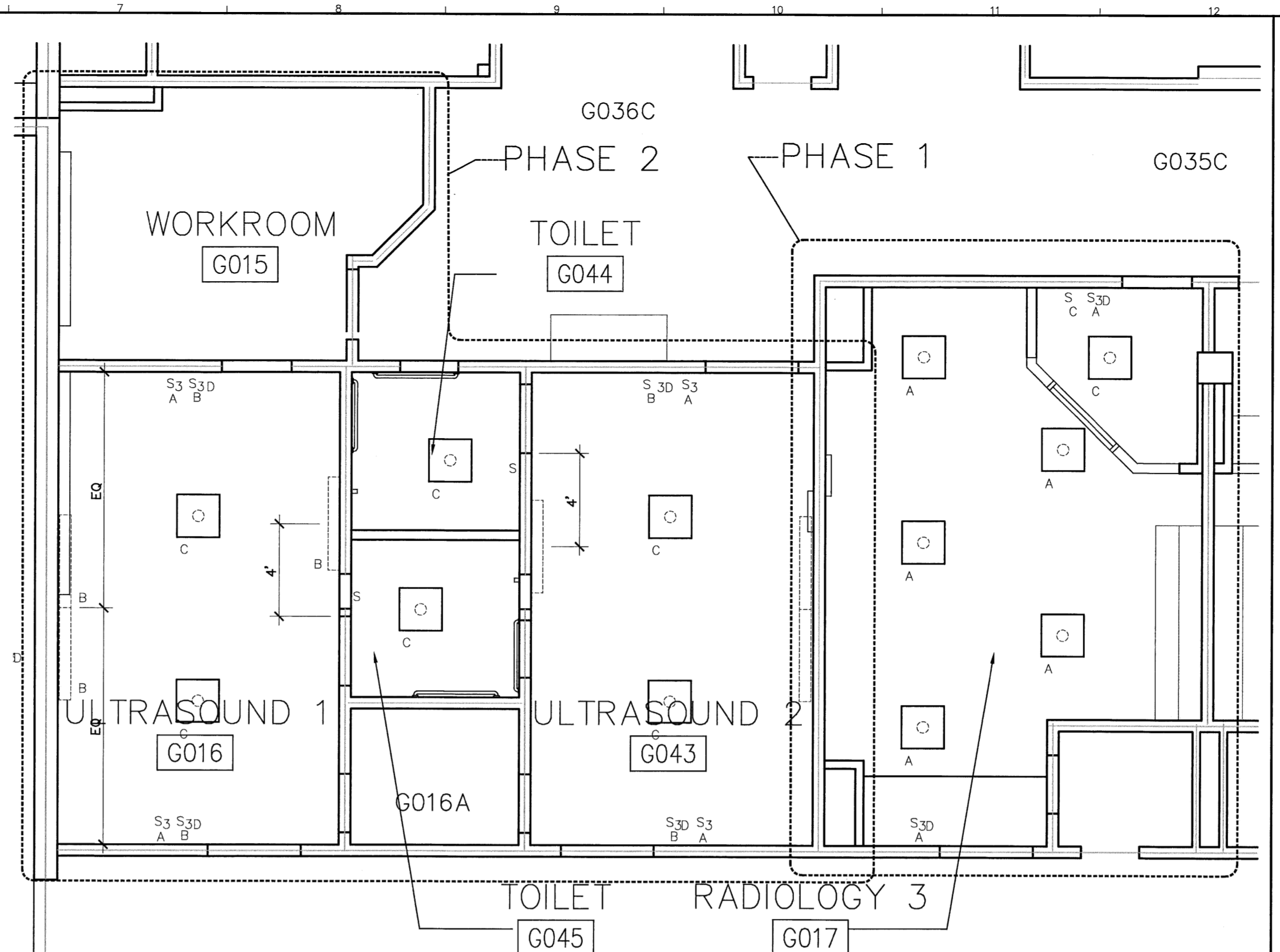


G1 ELECTRICAL POWER AND SYSTEMS PLAN (FOR REFERENCE)
N.T.S.



G8 LIGHTING PLAN (FOR REFERENCE)
N.T.S.

ELECTRICAL NOTES:

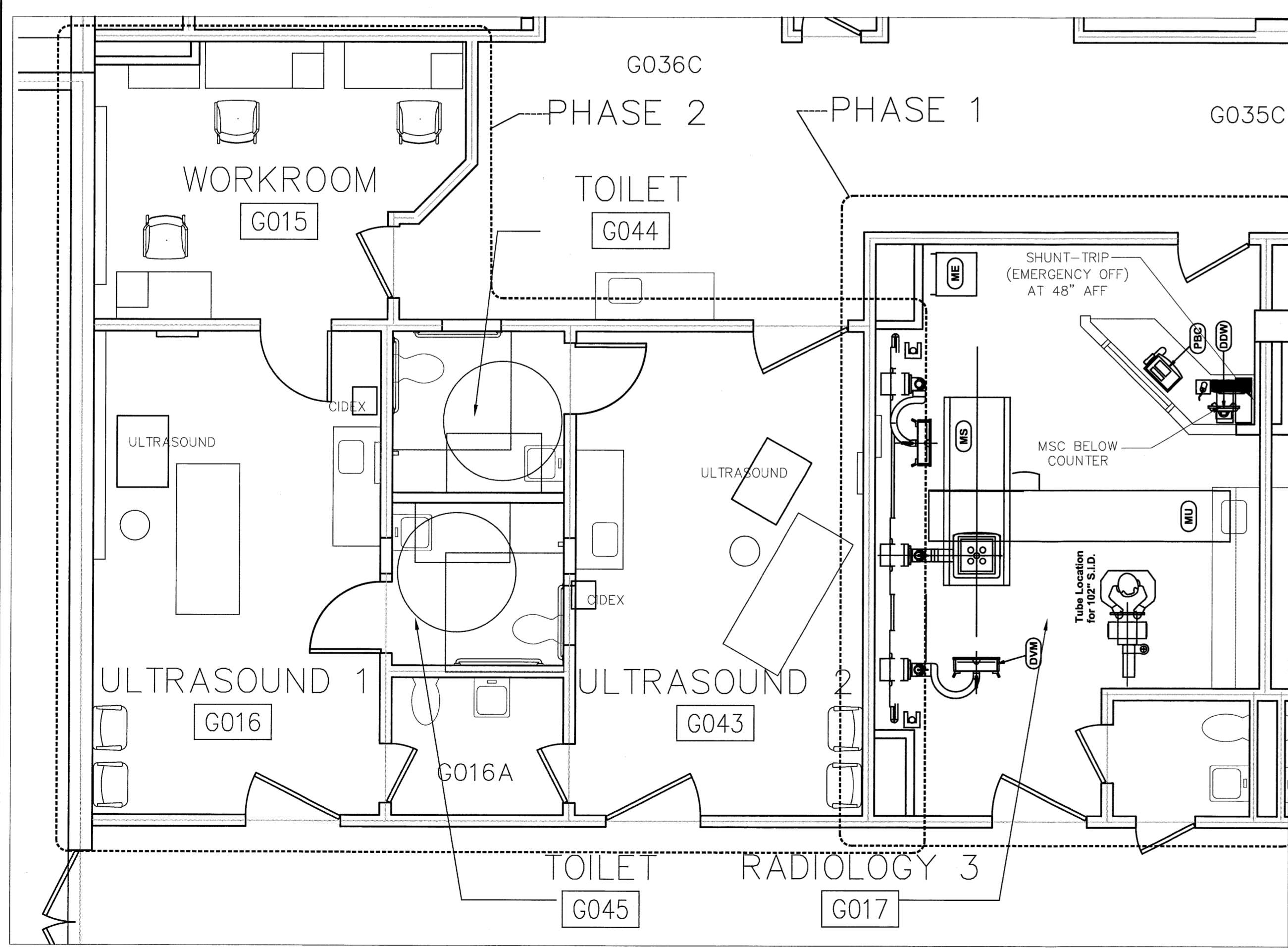
- ELECTRICAL DESIGN IS BY DESIGN-BUILD SUBCONTRACTOR. LIGHT FIXTURE, LIGHT SWITCH, POWER, VOICE/ DATA AND NURSE CALL LOCATIONS ARE SHOWN TO COMMUNICATE DESIGN INTENT.
- CONVENIENCE POWER RECEPTACLE LOCATIONS ARE SHOWN. SEE PHILIPS MEDICAL SYSTEMS FINAL SITE PREPARATION SUPPORT DOCUMENTS FOR ALL POWER REQUIREMENTS RELATED TO RADIOLOGY EQUIPMENT.
- PROVIDE ROUGH-IN FOR VOICE/DATA TO INCLUDE: 1 GANG BACKBOX LOCATED AT 18" AFF WITH 3/4" CONDUIT STUBBED ABOVE THE CEILING. A RUBBER GASKET AND PULL STRING ARE NEEDED AT ALL BACKBOXES.
- PROVIDE ROUGH-IN FOR NURSE CALL SYSTEM TO INCLUDE: 1 GANG BACKBOX FOR NURSE CALL DUAL PUSHBUTTON STATIONS (DP) AT 48" AFF, FOR NURSE CALL PULL CORD STATIONS (E) AT 60" AFF, AND FOR NURSE CALL CORRIDOR LIGHTS CENTERED ABOVE DOORS. PROVIDE 1" SLEEVES AT LOCATIONS SHOWN. PROVIDE 3/4" CONDUIT STUBBED ABOVE THE CEILING, RUBBER GASKET AND PULL STRING AT ALL BACKBOXES.
- ROUGH-IN FOR WALL PHONES IS N.I.C. THESE WILL BE PROVIDED BY THE PHONE INSTALLER.
- LIGHT SWITCH LOCATIONS ARE TO BE CONFIRMED BY THE OWNER.
- PROVIDE FIRE ALARM NOTIFICATION DEVICES AND EMERGENCY LIGHTING PER CODE.

LIGHT FIXTURE SCHEDULE

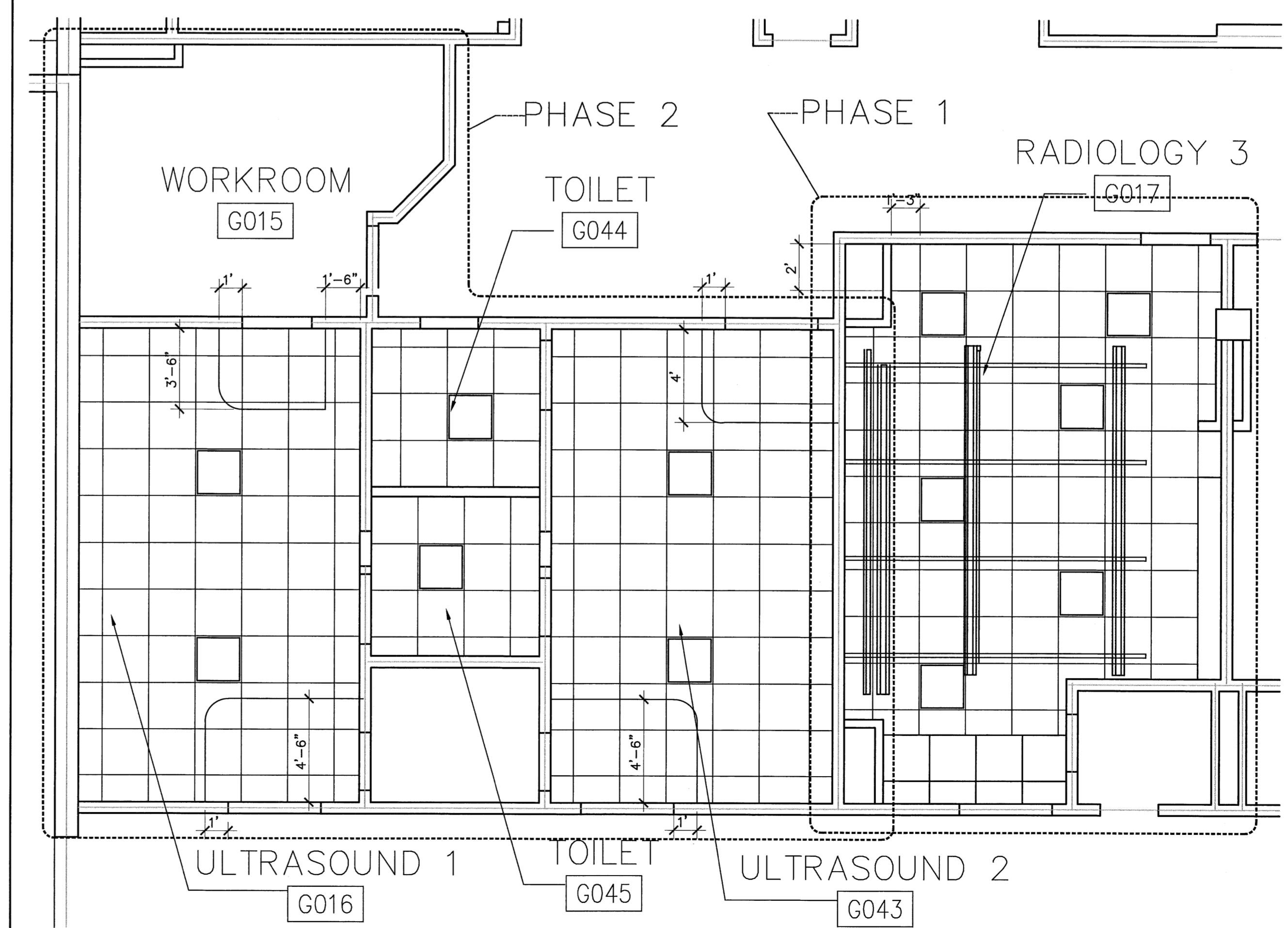
FIXTURE TYPE A: LIGHTOLIER ALTER SOFT LIGHTS, 2 X 2 RECESSED DIRECT/INDIRECT FLUORESCENT WITH DIMMING BALLAST. CATALOG NO: QVS-2-G-PF-OS-2-FT-120V-PC. CONTRACTOR TO VERIFY VOLTAGE AND BALLAST TYPE.

FIXTURE TYPE B: FINELITE SERIES 12 WALL MOUNT WITH DIMMING BALLAST. CATALOG NO: S12WM-P-4'-2T5-SC-91W-120-SUR-FE.

FIXTURE TYPE C: LIGHTOLIER ALTER SOFT LIGHTS, 2 X 2 RECESSED DIRECT/INDIRECT FLUORESCENT. CATALOG NO: QVS-2-G-PF-OS-2-FT-120V-BE. CONTRACTOR TO VERIFY VOLTAGE AND BALLAST TYPE.



A1 FURNITURE AND EQUIPMENT PLAN (FOR REFERENCE)
1/4" = 1'-0"



A8 REFLECTED CEILING PLAN
1/4" = 1'-0"

0	ISSUED FOR CONSTRUCTION	6/2/08
REV.	DESCRIPTION	DATE

ISSUED FOR CONSTRUCTION
6/2/08

PROJECT NORTH

LICENSED ARCHITECT
CAROL F. GILLIS
No. 2841
STATE OF MAINE

DESIGN GROUP COLLABORATIVE
ARCHITECTURE
DESIGN + PLANNING
22 FREE STREET
PORTLAND, MAINE 04101
(207) 699-3300

MMC BRIGHTON CAMPUS
RADIOLOGY RENOVATIONS
PORTLAND, MAINE

REFLECTED CEILING AND REFERENCE PLANS

SHEET TITLE: REFLECTED CEILING AND REFERENCE PLANS
DATE: 5/30/08 GRAPHIC SCALE: 1" = 0'-0"
SCALE: AS NOTED
PROJECT NO. 08003 SHEET No.
DRAWN BY: CFG
A/E OF RECORD: CFG

AE 102