

- GENERAL NOTES:**
- DO NOT SCALE DRAWINGS
  - FIELD VERIFY ALL DIMENSIONS PRIOR TO PROCEEDING WITH WORK. IF DISCREPANCIES ARE FOUND, NOTIFY ARCHITECT IN WRITING FOR CLARIFICATION BEFORE PROCEEDING WITH WORK.
  - ALL DIMENSIONS ARE MEASURED TO FACE OF FINISH.
  - PROVIDE 2 HR RATED FIRESTOPPING SYSTEM (U.L. RATED) AT FLOOR PENETRATIONS. SEAL PENETRATIONS AT EXISTING CORRIDOR WALLS TO LIMIT THE TRANSFER OF SMOKE.
  - DOOR JAMBS SHALL BE LOCATED 6" FROM CORNER UNLESS NOTED OTHERWISE. MAINTAIN 18" CLEAR FROM STRIKE SIDE OF DOOR TO ANY OBSTRUCTION ON PULL SIDE. MAINTAIN 12" CLEAR FROM STRIKE SIDE OF DOOR TO ANY OBSTRUCTION ON PUSH SIDE WHERE DOOR HARDWARE INCLUDES CLOSER.
  - PROVIDE BLOCKING FOR ALL CASEWORK, TOILET ACCESSORIES, WALL-MOUNTED DOOR STOPS, AND WALL-MOUNTED EQUIPMENT.
  - FURNITURE AND EQUIPMENT ARE SHOWN FOR INFORMATION AND COORDINATION. FURNITURE AND EQUIPMENT ARE PROVIDED BY OTHERS UNLESS NOTED OTHERWISE.
  - PATCH HOLES AND CRACKS IN EXISTING WALLS TO RECEIVE NEW PAINT.
  - MAINTAIN CONTINUITY OF LEAD LINING IN NEW AND EXISTING LEAD LINED WALLS WHERE ANY CABINETS, PANELS OR BOXES ARE INSTALLED BELOW 7'-0" AFF.

- REMOVAL NOTES:**
- ALL BUILDING STRUCTURAL ELEMENTS SHALL REMAIN. REMOVE EXISTING UNISTRUT EXPOSED TO VIEW AND ANY EXISTING UNISTRUT ABOVE CEILING AS NECESSARY FOR INSTALLATION OF NEW HVAC, LIGHTING AND EQUIPMENT SUPPORT.
  - REMOVE EXISTING CEILING GRID AND TILE, EXISTING LIGHT FIXTURES, EXISTING RACEWAYS AND EXISTING FLOORING UNLESS NOTED OTHERWISE.
  - COORDINATE WITH DESIGN-BUILD SUBCONTRACTOR REGARDING REMOVAL AND RE-USE OF EXISTING DUCTWORK, GRILLES, AND DIFFUSERS.
  - PROTECT ALL FINISHES, MATERIALS AND EQUIPMENT NOT INDICATED FOR REMOVAL.
  - ANY WALL, PARTITION OR SURFACE DISTURBED BY DEMOLITION OR NEW CONSTRUCTION SHALL BE PATCHED AND FINISHED CONTINUOUSLY TO THE NEAREST CORNER UNLESS NOTED OTHERWISE. MATCH EXISTING ADJACENT CONSTRUCTION, FINISHES, CONTINUITY AND FIRE RATINGS UNLESS NOTED OTHERWISE.

- RADIOLOGY EQUIPMENT NOTES:**
- REFER TO PHILIPS MEDICAL SYSTEM'S FINAL SITE PREPARATION SUPPORT DOCUMENT DATED 5/15/08 FOR ALL RADIOLOGY EQUIPMENT SITE PREPARATION REQUIREMENTS.
  - LOCATION OF PATIENT SUPPORT (PS) AND MANUAL STORAGE CABINET (MS) ARE TO BE DETERMINED BY OWNER. THESE ITEMS ARE NOT HEAT PRODUCING AND DO NOT REQUIRE ELECTRICAL CONNECTION OR STRUCTURAL SUPPORT.
  - DESIGN OF STRUCTURAL SUPPORT FOR CEILING-MOUNTED EQUIPMENT WILL BE BY UNISTRUT.

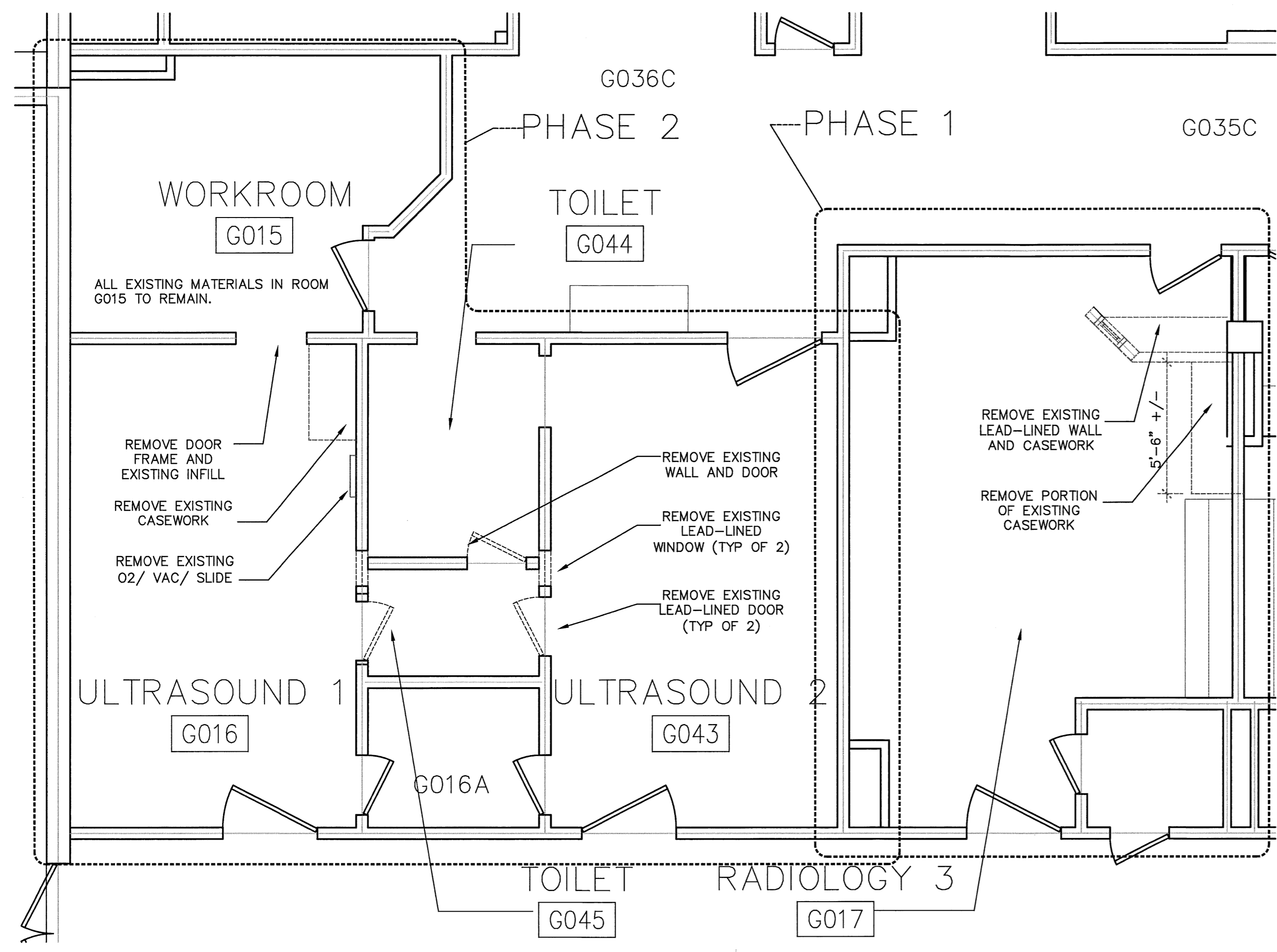
- MECHANICAL/ PLUMBING/ FIRE SUPPRESSION NOTES:**
- MECHANICAL, PLUMBING AND FIRE PROTECTION DESIGN IS BY DESIGN-BUILD SUBCONTRACTORS.
  - SEE PHILIPS MEDICAL SYSTEMS' FINAL SITE PREPARATION DRAWINGS FOR ALL MECHANICAL REQUIREMENTS RELATED TO RADIOLOGY EQUIPMENT.
  - COORDINATE GRILLE AND DIFFUSER LOCATIONS WITH CEILING MOUNTED EQUIPMENT, LIGHT FIXTURES, AND CUBICLE CURTAIN TRACK LOCATIONS SHOWN ON REFLECTED CEILING PLAN.
  - PLUMBING FIXTURE LOCATIONS ARE SHOWN TO COMMUNICATE DESIGN INTENT. PROVIDE ADA PLUMBING FIXTURES PER HOSPITAL'S STANDARDS. TOILET FIXTURES ARE TO BE FLOOR MOUNTED.
  - PROVIDE EYE WASH FIXTURES AT SINKS IN ROOMS G016 AND G043. FIXTURES ARE TO BE DECK MOUNTED WITH OFFSET ARM WHICH LOCATES SPRAY HEADS OVER SINK WHEN ACTIVATED.
  - MODIFY/ADJUST EXISTING SPRINKLER SYSTEM TO PROVIDE FIRE SUPPRESSION PER NFPA 13.

**PARTITION TYPES:**

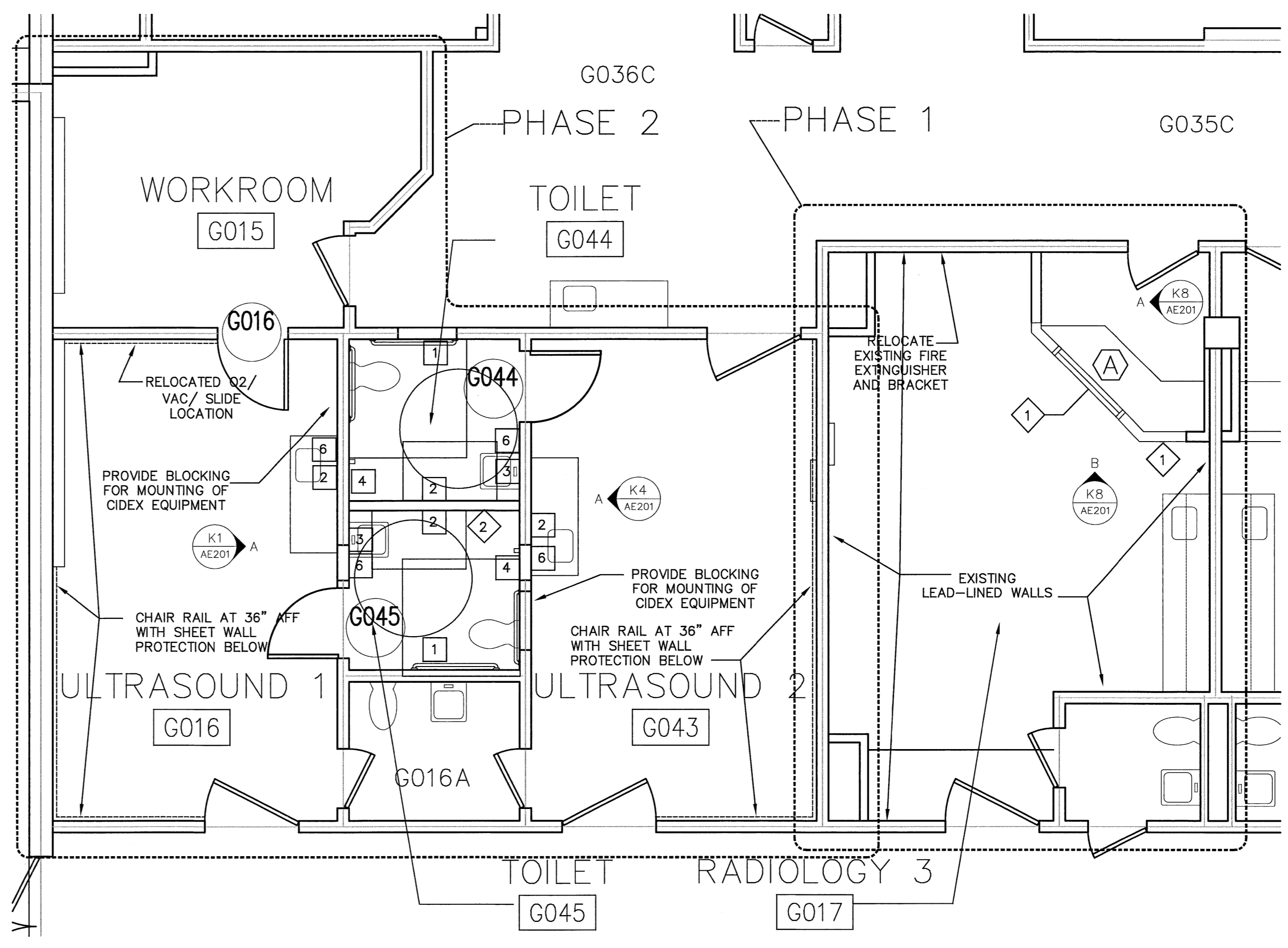
1 LEAD-LINED WALL: 3 5/8" METAL STUDS SPACED 12" O.C. (1) LAYER 5/8" LEAD-LINED DRYWALL (1/16" THICK LEAD) ON TAGGED SIDE. (1) LAYER 5/8" DRYWALL ON OPPOSITE SIDE AND AS CAP AT TOP OF PART HEIGHT AREAS. EXTEND WALL TO 6" ABOVE CEILING FOR 1'-0" DISTANCE FROM EAST WALL. BRACE TOP OF WALL TO NORTH WALL--SEE ELEVATIONS.

2 ACOUSTICAL SEPARATION WALL: 3 5/8" METAL STUDS SPACED 16" O.C. FULL HEIGHT TO STRUCTURE. (1) LAYER 5/8" GYP. BD. FULL HEIGHT TO STRUCTURE BOTH SIDES. PROVIDE FIBERGLASS BATT INSULATION FULL DEPTH OF STUDS. PROVIDE ACOUSTICAL SEALANT AT TOP AND BOTTOM OF WALL.

**G1 RADIOLOGY DEPARTMENT PLAN (FOR REFERENCE)**  
 1/16" = 1'-0" NOTE: SHADED AREAS ARE N.I.C.



**A1 REMOVALS PLAN**  
 1/4" = 1'-0"



**A8 FLOOR PLAN**  
 1/4" = 1'-0"

0	ISSUED FOR CONSTRUCTION
REV.	DESCRIPTION

**ISSUED FOR CONSTRUCTION**  
6/2/08

CURRENT ISSUE STATUS:

**PROJECT NORTH**

**DESIGN GROUP COLLABORATIVE**  
 ARCHITECTURE DESIGN + PLANNING  
 22 FREE STREET  
 PORTLAND, MAINE 04101  
 (207) 699-3300

**MMC BRIGHTON CAMPUS**  
**RADIOLOGY RENOVATIONS**  
 PORTLAND, MAINE

**FLOOR PLANS AND REMOVALS PLAN**

SHEET TITLE: FLOOR PLANS AND REMOVALS PLAN  
 DATE: 5/30/08 GRAPHIC SCALE: 0'  
 SCALE: AS NOTED  
 PROJECT NO. 08003 SHEET No. 0  
 DRAWN BY: CFG  
 A/E OF RECORD: CFG

**AE 101**