

HARRIMAN

AUBURN PORTLAND MANCHESTER

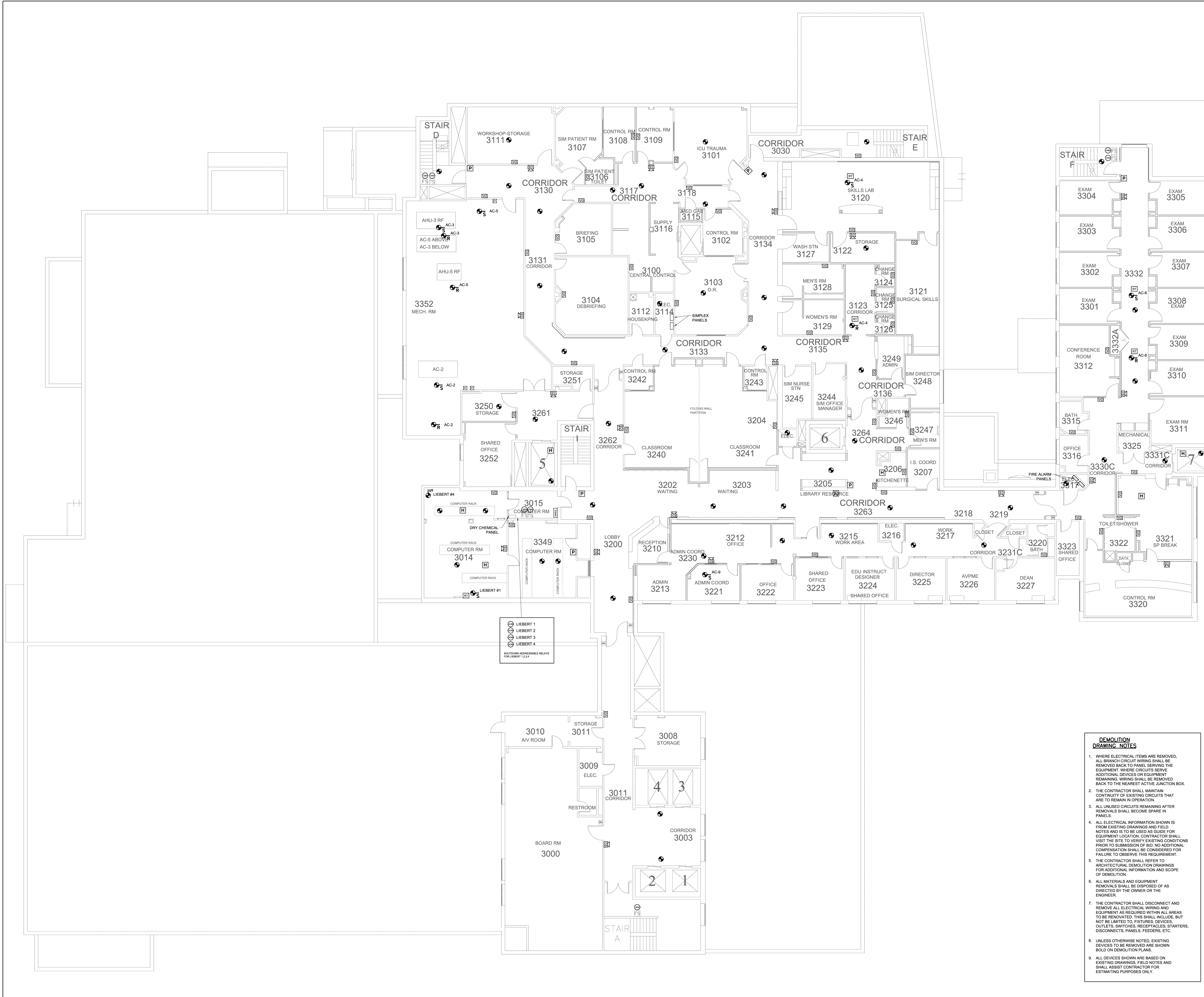
### MAINE MEDICAL CENTER BRIGHTON CAMPUS FIRE ALARM UPGRADE

PORTLAND, MAINE

Harriman Project No. 12657

Key Plan

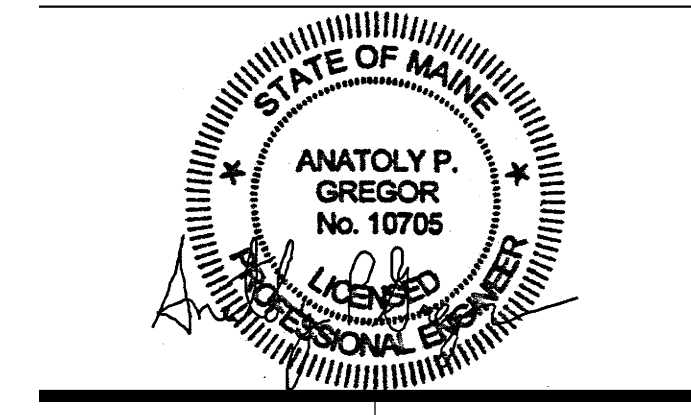
Plot North



- DEMOLITION DRAWING NOTES**
- WHERE ELECTRICAL ITEMS ARE REMOVED, ALL BRANCH CIRCUIT WIRING SHALL BE REMOVED BACK TO PANEL SERVING THE EQUIPMENT, WHERE CIRCUITS SERVE ADDITIONAL DEVICES OR EQUIPMENT REMAINING WIRING SHALL BE REMOVED BACK TO THE NEAREST ACTIVE JUNCTION BOX.
  - THE CONTRACTOR SHALL MAINTAIN CONTINUITY OF EXISTING CIRCUITS THAT ARE TO REMAIN IN OPERATION.
  - ALL UNUSED CIRCUITS REMAINING AFTER REMOVALS SHALL BECOME SPARE IN PANELS.
  - ALL ELECTRICAL INFORMATION SHOWN IS FROM EXISTING DRAWINGS AND FIELD NOTES AND IS TO BE USED AS GUIDE FOR EQUIPMENT LOCATION. CONTRACTOR SHALL VISIT THE SITE TO VERIFY EXISTING CONDITIONS PRIOR TO SUBMISSION OF BID. NO ADDITIONAL COMPENSATION SHALL BE CONSIDERED FOR FAILURE TO OBSERVE THIS REQUIREMENT.
  - THE CONTRACTOR SHALL REFER TO ARCHITECTURAL DEMOLITION DRAWINGS FOR ADDITIONAL INFORMATION AND SCOPE OF DEMOLITION.
  - ALL MATERIALS AND EQUIPMENT REMOVALS SHALL BE DISPOSED OF AS DIRECTED BY THE OWNER OR THE ENGINEER.
  - THE CONTRACTOR SHALL DISCONNECT AND REMOVE ALL ELECTRICAL WIRING AND EQUIPMENT AS REQUIRED WITHIN ALL AREAS TO BE RENOVATED. THIS SHALL INCLUDE, BUT NOT BE LIMITED TO, FIXTURES, DEVICES, OUTLETS, SWITCHES, RECEPTACLES, STARTERS, DISCONNECTS, PANELS, FEEDERS, ETC.
  - UNLESS OTHERWISE NOTED, EXISTING DEVICES TO BE REMOVED ARE SHOWN BOLD ON DEMOLITION PLANS.
  - ALL DEVICES SHOWN ARE BASED ON EXISTING DRAWINGS, FIELD NOTES AND SHALL ASSIST CONTRACTOR FOR ESTIMATING PURPOSES ONLY.

Notes and Revisions

Mark	Date	Description
	3-4-14	ISSUED FOR PERMIT



Drawing Scale: 1/8" = 1'-0"

PA/PE: JWT © 2013  
Drawn By: APG Harriman Associates

### ELECTRICAL THIRD FLOOR DEMOLITION PLAN

# FA-06