

# Maine Medical Partners Orthopedic Trauma & Fracture Care

335 Brighton Avenue, Suite 200  
Portland, Maine

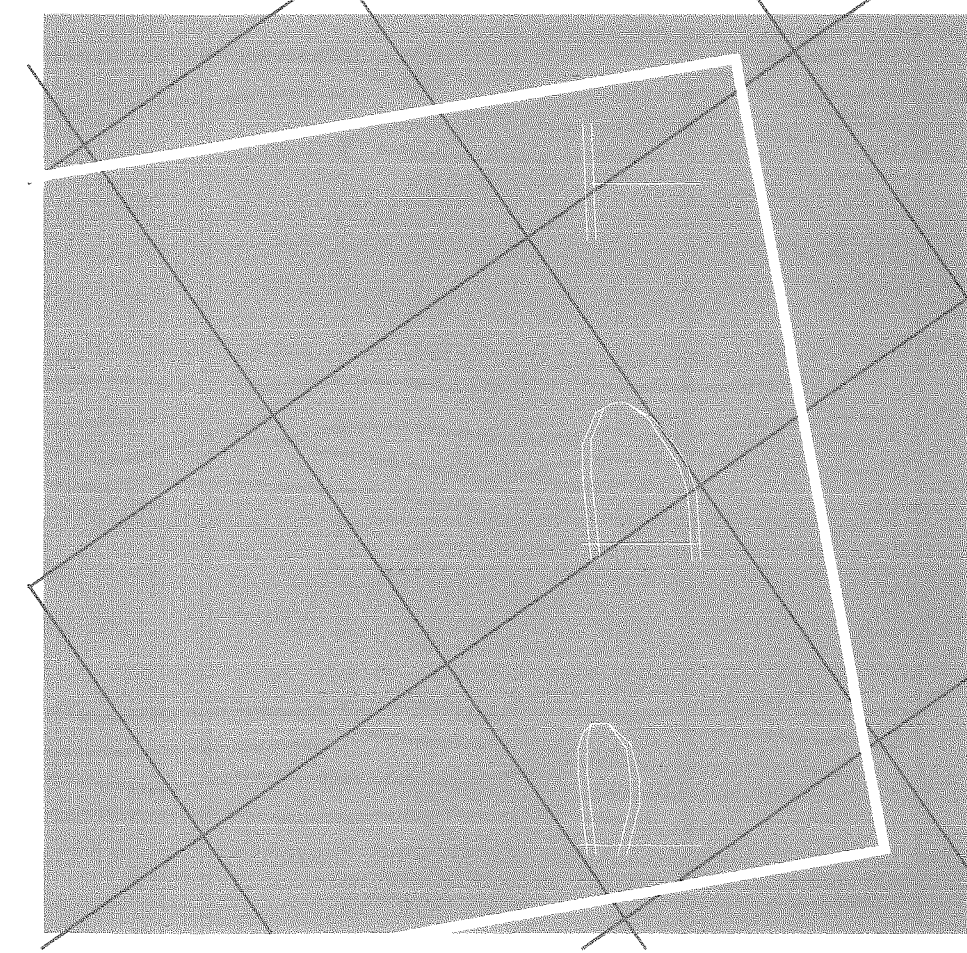
## LIST OF DRAWINGS

ARCHITECTURAL DRAWINGS:  
T1.0 TITLE SHEET, ABBREVIATIONS & KEY/CODE PLAN  
C1.1 PHASING PLANS  
D1.0 DEMOLITION PLAN, LEGEND & NOTES  
A1.0 FLOOR PLANS, WALL TYPES, NOTES & LEGEND  
A2.0 RCP, E & E PLAN, DETAILS, NOTES & LEGEND  
A7.0 FINISH SCHEDULE, MATERIALS LEGEND, DOORS & HARDWARE, AND OUTLINE SPECIFICATION  
A8.0 INTERIOR ELEVATIONS  
A8.1 CASEWORK SECTIONS, & DETAILS

## ABBREVIATIONS

ADJ	ADJUSTABLE	MFR	MANUFACTURER
ALG	ALUMINUM	MAX	MAXIMUM
BLG	BOTTOM OF	MIN	MINIMUM
CC	CIRCLE CURTAIN	MISC	MISCELLANEOUS
CFM	COLD FORMED METAL FRAMING	MR	MOISTURE RESISTANT
CG	CORNER GUARD	NC	NOT IN CONTRACT
CJ	CONTROL JOINT	OC	ON CENTER
CLG	CEILING	PT	PRESSURE TREATED
CL	CENTER LINE	R, RUD	RADIUS
CL	CLOSET	RES	RESILIENT BASE
COL	COLUMN	REF	REQUIRED
CONC	CONCRETE	RECY	RECYCLED
CONST	CONSTRUCTION	ROU	ROUGH OPENING
CONT	CONTAINMENT	SA	SCHEDULE
CS	CHAIR RAIL	SAT	SUSPENDED ACoustICAL
DA	DIAMETER	SM	SMILAR
DM	DIMENSION	SFRM	SPRAY-APPLIED FIRE RESISTANT MATERIAL
DW	DISHWASHER	SPEC	SPECIFICATION
DWG	DRAWING	SS	SQUARE
EJ	EXPANSION JOINT	SQ	SQUARE
ELEV	ELEVATION	SS	STAINLESS STEEL
EXT	EXTERIOR	STL	STEEL
EXT	EXTERIOR	STD	STANDARD
FD	FLOOR DRAIN	STR	STRUCTURE
FR	FOUNDATION	STR	STRUCTURE
FTN	FOUNDATION	SV	SHEATHING
FT	FEET	SV	SHEATHING
GA	GAUGE	TOP	TOP OF
GC	GENERAL CONTRACTOR	TYP	TYPICAL
GL	GLASS	UNO	UNLESS NOTED OTHERWISE
GMB	GYPsum WALL BOARD	VERT	VERTICAL
HR	HAND RAIL	VF	VERIFY IN FIELD
HM	HOLLOW METAL	W/	WITH
H, HGT	HEIGHT	WB	WALL BUMPER
HOR	HORIZONTAL	W/O	WITHOUT
INSUL	INSULATION	WO	WOOD
MESH	MESH	WP	WALL PROTECTION
MED	MEDIUM		

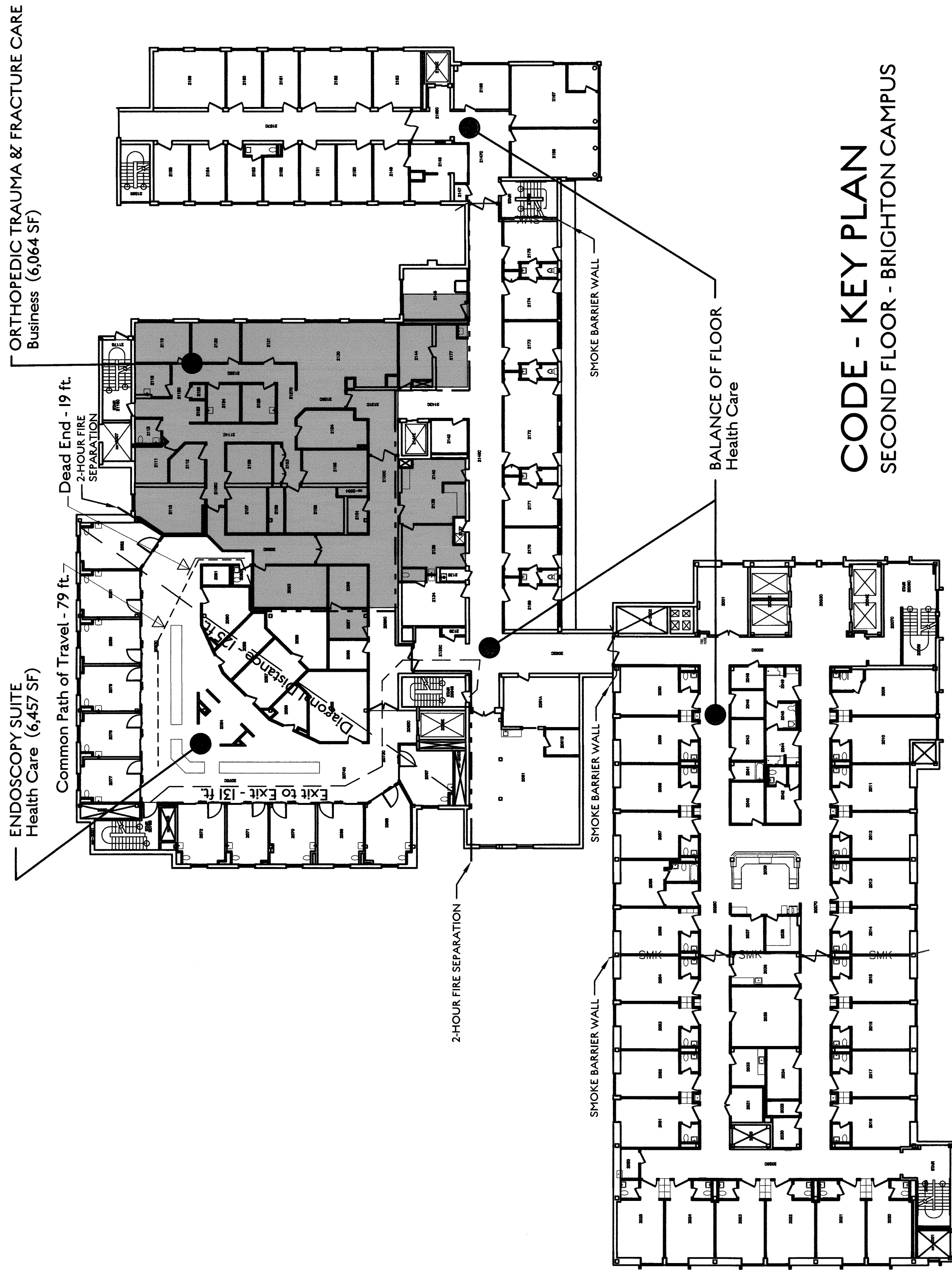
NOTE: REFER TO MATERIALS LEGEND FOR ADDITIONAL FINISH ABBREVIATIONS



ARCHITECTS

ARCHITECTURE  
INTERIOR DESIGN  
PLANNING

49 DARTMOUTH STREET  
PORTLAND, ME 04101  
207 775-1059  
207 775-2694 FAX  
www.pdtarchs.com



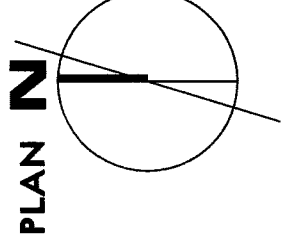
## CODE - KEY PLAN SECOND FLOOR - BRIGHTON CAMPUS

### CODE SUMMARY

APPLICABLE CODES & GUIDELINES  
Building Code: IBC 2009 (per MUBEC)  
Life Safety Code: NFPA 101 - 2009  
Guidelines: Guidelines for Design & Construction of Healthcare Facilities 2006

FIRE PROTECTION  
Supervised - Automatic Sprinkler System

OCCUPANCY LOAD	BUSINESS (B) Existing		HEALTHCARE (H-Z) Existing	
	IBC	NFPA	IBC	NFPA
Table 1004.1.1	100 sf/person	Table 7.3.1.1 100 sf/person	Table 1004.1.1	Table 7.3.1.2 Inpatient Treatment: 240 sf/person Sleeping: 120 sf/person
SEPARATION OF OCCUPANCIES	NA	Table 6.1.1.4.4.1 Separation between business and healthcare occupancies is 2 hours	Table 6.1.1.4.4.1	Table 6.1.1.4.4.1 Separation between business and healthcare occupancies is 2 hours
NON-SLEEPING SUITES	NA	NA	19.2.5.7.3	19.2.5.7.3 Ambulatory HC: 100 sf/person Suites more than 2,500 sf shall have not less than two exits access doors remotely located from each other
CONSTRUCTION CLASSIFICATION	Type 1 (332)	Type 1 (332)	Table 1021.1	Type 1 (332)
NUMBER OF EXITS	Table 1021.1 2 Exits for occupant load of 500 or less	39.2.4.1 Not less than two separate exits shall be accessible from every part of every story	Table 1021.1	19.2.4.2 Not less than 2 exits shall be accessible from every part of every story or from each smoke compartment
TRAVEL DISTANCE TO EXITS	1016.1 Max. 300' w/ sprinkler	39.2.6.2 Max. 300' w/ supervised sprinkler system	1016.1	19.2.6.2.2 Travel distance between any room door required as an exit access and an exit shall not exceed 200 ft. w/ sprinkler system
REMOTENESS OF EXITS				7.5.4.2 Distance between exits not less than 1/2 length of max. overall diagonal dimension.
COMMON PATH OF TRAVEL	1014.3 Max. 100'	39.2.5.3.1 Max. 300' w/ sprinkler		1007 - One intervening room 507 - Two intervening rooms
DEAD END LIMIT	Table 1018.1 No fire rating required w/ sprinkler system	39.2.5.2 50 ft.		19.2.5.7.3.4 30 ft.
CORRIDORS		39.3.6 No requirement	Table 1018.1	19.3.6.2.4 Within smoke compartments, non-rated corridors permitted
HAZARDOUS AREA PROTECTION		39.3.2.2 High hazard areas shall be separated: 1-hour separation; closer; 3/4 hour min. door; sprinkler		Table 18.3.2.1 Non-patient corridors: Min. 44' clear separation; 50' door; door closer



PLAN N  
Issue: November 26, 2012

T1.0  
SHEET

MMP - ORTHOPEDIC TRAUMA & FRACTURE CARE  
BRIGHTON CAMPUS, PORTLAND, MAINE



JOB NO. 12-110  
DRWN. CHK. JAF  
SCALE: N/A  
ISSUE: NOVEMBER 26, 2012  
TITLE: TITLE SHEET, ABBREVIATIONS & KEY/CODE PLAN  
SHEET

P D T  
ARCHITECTS  
49 DARTMOUTH STREET  
PORTLAND, MAINE 04101  
207 775-1059  
www.pdtarchs.com

COPYRIGHT 2012  
PDT Architects  
Re-use or reproduction of the contents of this drawing without the written permission of PDT Architects.