

**POWER/SYSTEMS/LIGHTING KEY:**

- 2X2 FLUORESCENT FIXTURE
- DOWNLIGHT
- ◆ SPEAKER
- ⊙ SMOKE DETECTOR
- Ⓢ NURSE CALL HALL LIGHT
- Ⓛ DUPLEX RECEPTACLE
- Ⓜ DOUBLE DUPLEX (QUAD) RECEPTACLE
- ▽ VOICE/DATA OUTLET
- W WALL PHONE
- MS NURSE CALL DUTY STATION
- PB NURSE CALL PUSH BUTTON

**ELECTRICAL NOTES:**

- ELECTRICAL DESIGN IS BY DESIGN-BUILD SUBCONTRACTOR. LIGHT FIXTURE, VOICE/ DATA AND NURSE CALL LOCATIONS ARE SHOWN TO COMMUNICATE DESIGN INTENT.
- PROVIDE LIGHT SWITCHES ADJACENT TO ROOM DOOR AT INTERIOR OF ROOM. PROVIDE OCCUPANCY SENSORS AT CHANGING ROOMS G026A, G026B, G027A, G028A AND TOILET ROOM G055.
- NEW CONVENIENCE POWER RECEPTACLE LOCATIONS ARE SHOWN. EXISTING RECEPTACLES TO REMAIN UNLESS NOTED OTHERWISE. IN WAITING ROOM G031A, RELOCATE RED RECEPTACLES ABOVE 30" AFF TO 18" AFF. TV RECEPTACLE AND CATV TO REMAIN.
- PROVIDE ROUGH-IN FOR VOICE/DATA TO INCLUDE: 1 GANG BACKBOX LOCATED AT 18" AFF WITH 3/4" CONDUIT STUBBED ABOVE THE CEILING. A RUBBER GASKET AND PULL STRING ARE NEEDED AT ALL BACKBOXES.
- PROVIDE BACK BOXES FOR NURSE CALL DEVICES AT 48" AFF U.N.O. NURSE CALL DEVICE AT TOILET ROOM G055 TO BE FIELD LOCATED. PROVIDE 3/4" CONDUIT STUBBED ABOVE THE CEILING, RUBBER GASKET AND PULL STRING AT ALL BACK-BOXES.
- REINSTALL EXISTING SPEAKERS AND SMOKE DETECTORS TO LOCATIONS SHOWN IN LIGHTING PLAN. PROVIDE NEW SMOKE DETECTOR WHERE INDICATED.
- PROVIDE FIRE ALARM NOTIFICATION DEVICES, EXIT AND EMERGENCY LIGHTING PER CODE.

**LIGHT FIXTURE SCHEDULE**

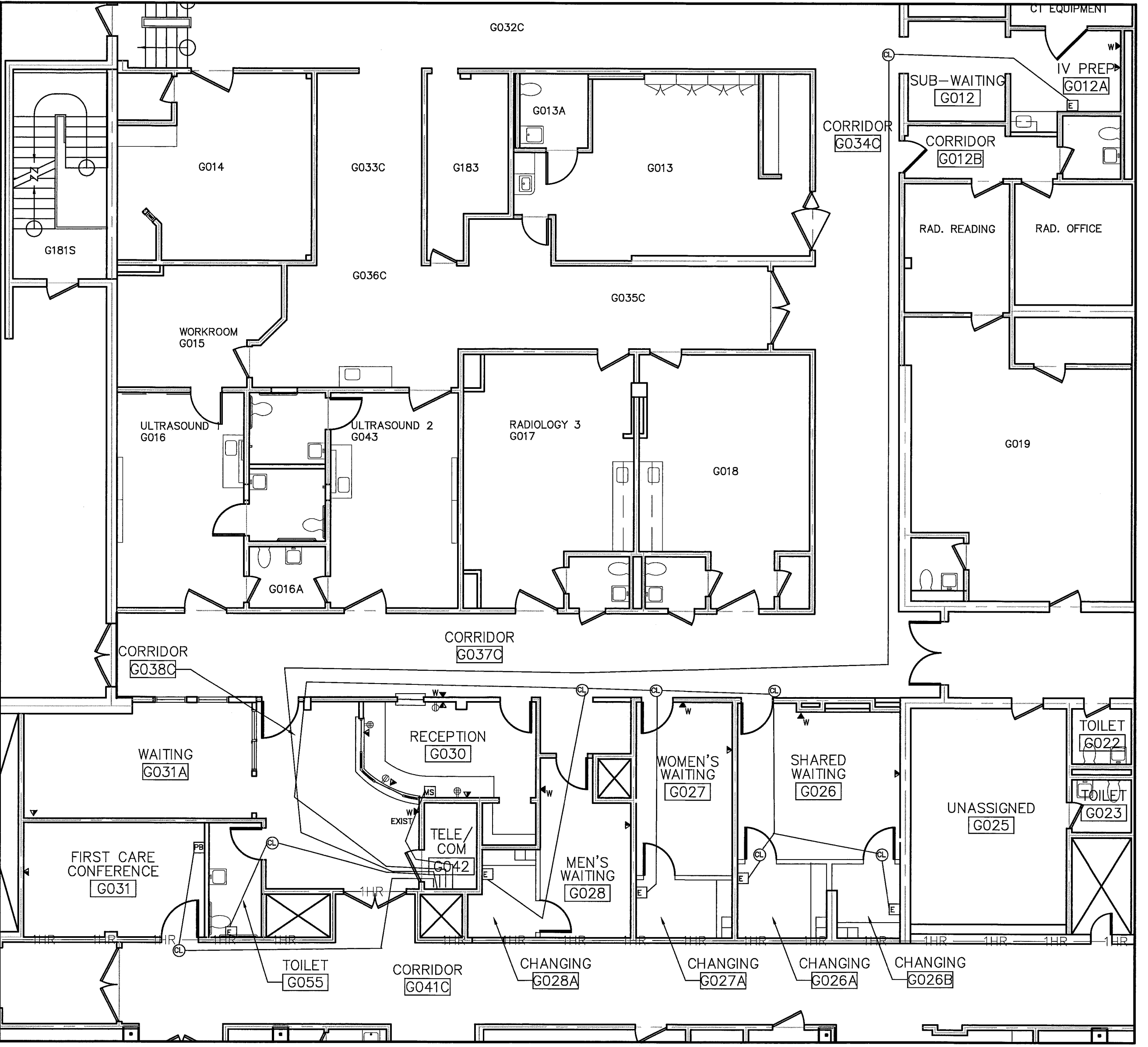
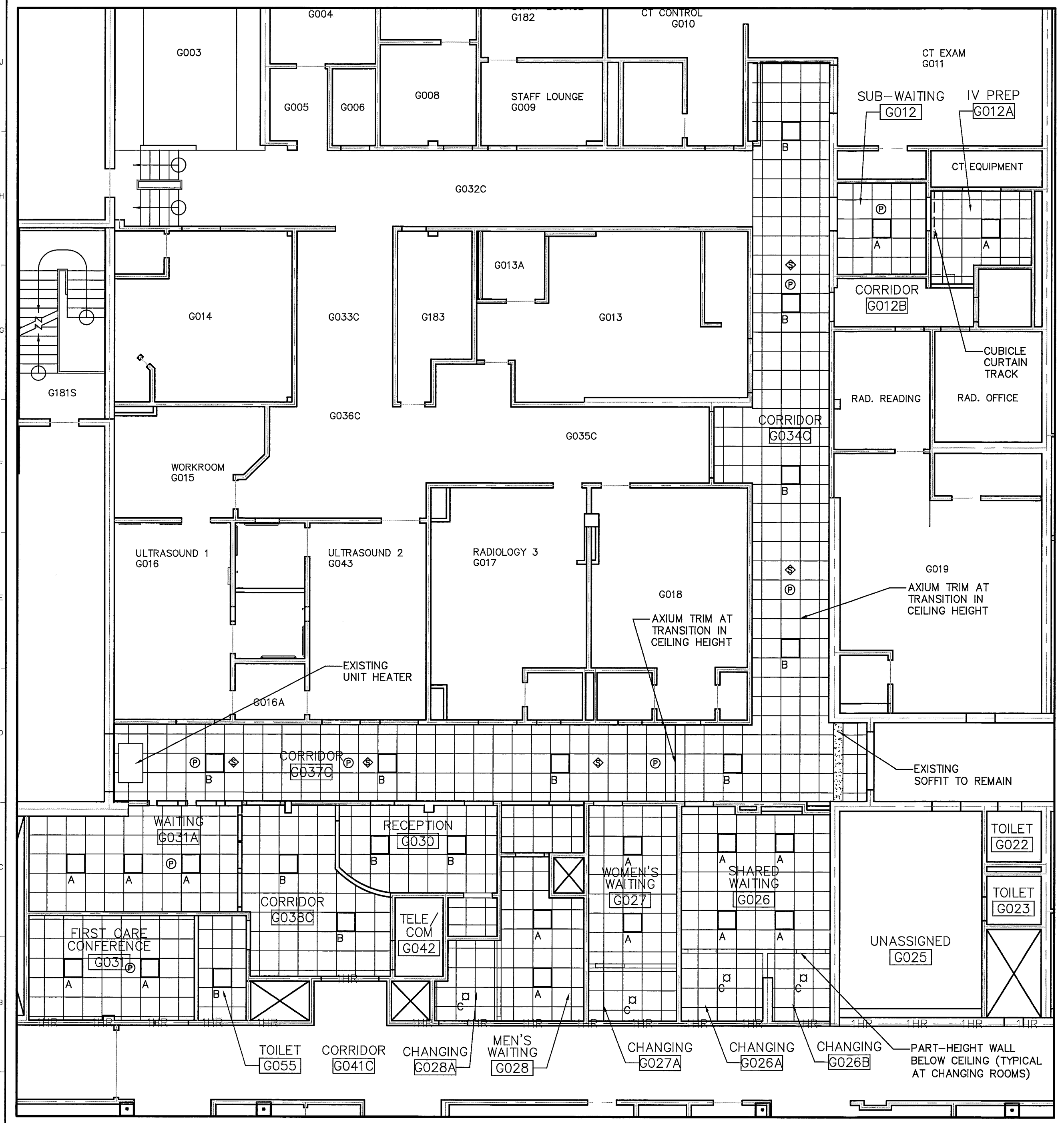
**FIXTURE TYPE A:** LIGHTOLIER ALTER SOFT LIGHTS, 2 X 2 RECESSED DIRECT/INDIRECT FLUORESCENT WITH DIMMING BALLAST. CATALOG NO: QVS-2-G-PF-OS-2-FT-120V-PC. CONTRACTOR TO VERIFY VOLTAGE AND BALLAST TYPE.

**FIXTURE TYPE B:** LIGHTOLIER ALTER SOFT LIGHTS, 2 X 2 RECESSED DIRECT/INDIRECT FLUORESCENT. CATALOG NO: QVS-2-G-PF-OS-2-FT-120V-BE. CONTRACTOR TO VERIFY VOLTAGE AND BALLAST TYPE.

**FIXTURE TYPE C:** HOSPITAL STANDARD 6" DIA. RECESSED FLUORESCENT DOWNLIGHT. LAMP WATTAGE AS NEEDED TO PROVIDE APPROX. 20 FOOTCANDLES IN DRESSING ROOM.

**MECHANICAL/ PLUMBING/ FIRE SUPPRESSION NOTES:**

- MECHANICAL, PLUMBING AND FIRE PROTECTION DESIGN IS BY DESIGN-BUILD SUBCONTRACTORS.
- COORDINATE GRILLE AND DIFFUSER LOCATIONS WITH LIGHT FIXTURES, AND CUBICLE CURTAIN TRACK LOCATIONS SHOWN ON REFLECTED CEILING PLAN.
- PLUMBING FIXTURE LOCATIONS ARE SHOWN TO COMMUNICATE DESIGN INTENT. PROVIDE ADA PLUMBING FIXTURES PER HOSPITAL'S STANDARDS. TOILET FIXTURES ARE TO BE FLOOR MOUNTED.
- PROVIDE NEW REHEAT COIL, DUCTWORK, DIFFUSERS AND CONTROLS FOR RECEPTION G030, FIRST CARE CONFERENCE G031, AND WAITING G031A. REPLACE DIFFUSERS IN ALL OTHER RENOVATED AREAS. PROVIDE/ UPGRADE EXHAUST AT TOILET ROOMS G022, G023 AND G055. VENTILATION TO MEET REQUIREMENTS OF AIA GUIDELINES FOR HEALTHCARE FACILITIES. CONFIRM HVAC SCOPE WITH FACILITY MANAGER.
- MODIFY/ADJUST EXISTING SPRINKLER SYSTEM TO PROVIDE FIRE SUPPRESSION PER NFPA 13.



REV.	DESCRIPTION	DATE
0	ISSUED FOR CONSTRUCTION	6/26/09

**ISSUED FOR CONSTRUCTION**  
6/26/09

CURRENT ISSUE STATUS:

**PROJECT NORTH**

**LICENSED ARCHITECT**  
CAROL F. GILLIS  
No. 2841  
Carol F. Gillis  
STATE OF MAINE

**DESIGN GROUP COLLABORATIVE**  
ARCHITECTURE DESIGN + PLANNING  
22 FREE STREET  
PORTLAND, MAINE 04101  
(207) 699-3300

**MMC BRIGHTON RADIOLOGY RECEPTION/WAITING RENOVATIONS**  
PORTLAND, MAINE

**REFLECTED CEILING AND REFERENCE PLANS**

SHEET TITLE:	DATE:	6/26/09	GRAPHIC SCALE:	1" = 8'-0"
SCALE:	AS NOTED			
PROJECT NO.:	09003	SHEET No.:		
DRAWN BY:	CFG			
A/E OF RECORD:	CFG			

**AE 102**

**A1 REFLECTED CEILING AND LIGHTING PLAN**

1/8" = 1'-0"

**A7 ELECTRICAL POWER AND SYSTEMS PLAN**

3/8" = 1'-0" FOR REFERENCE