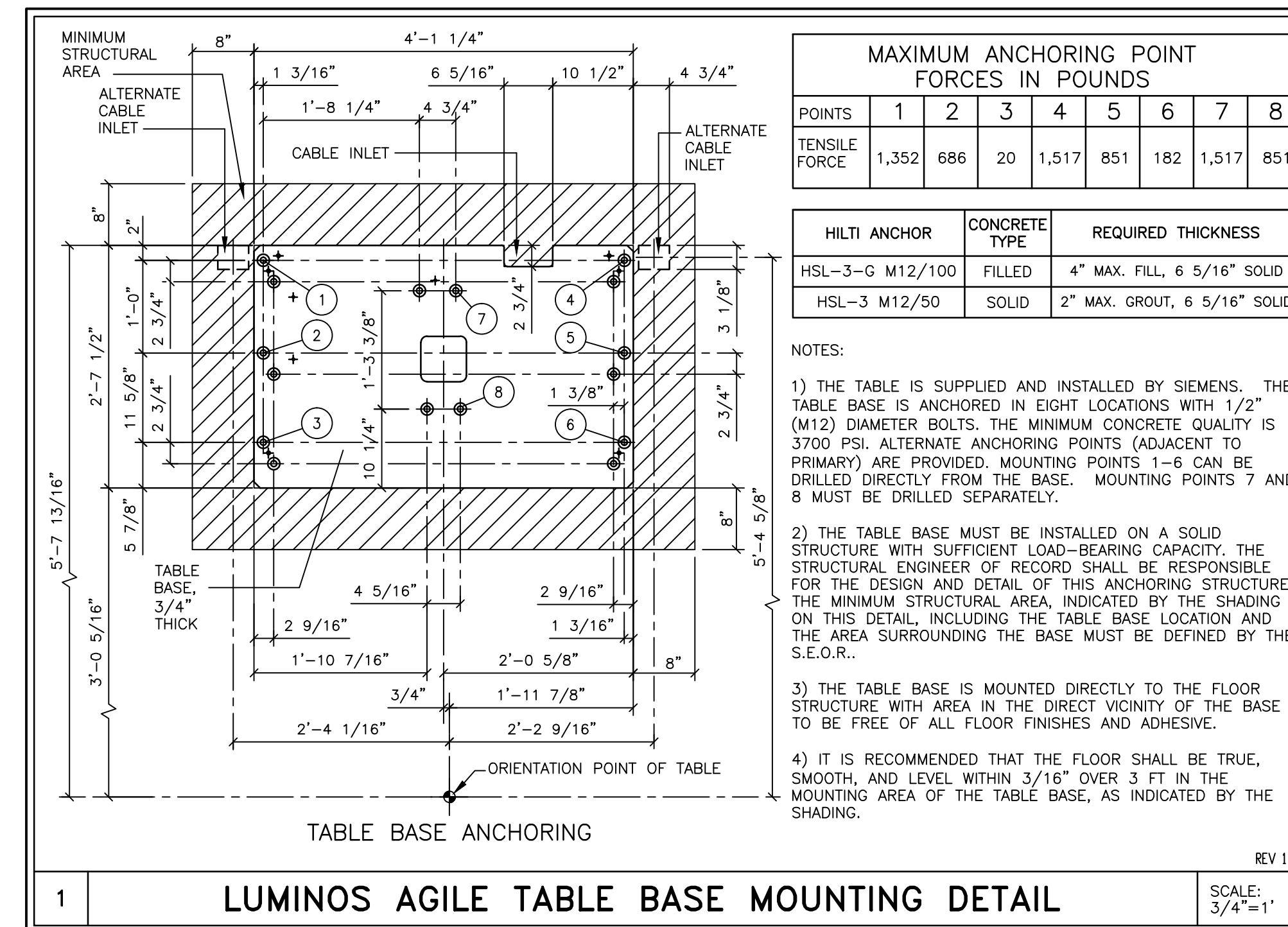


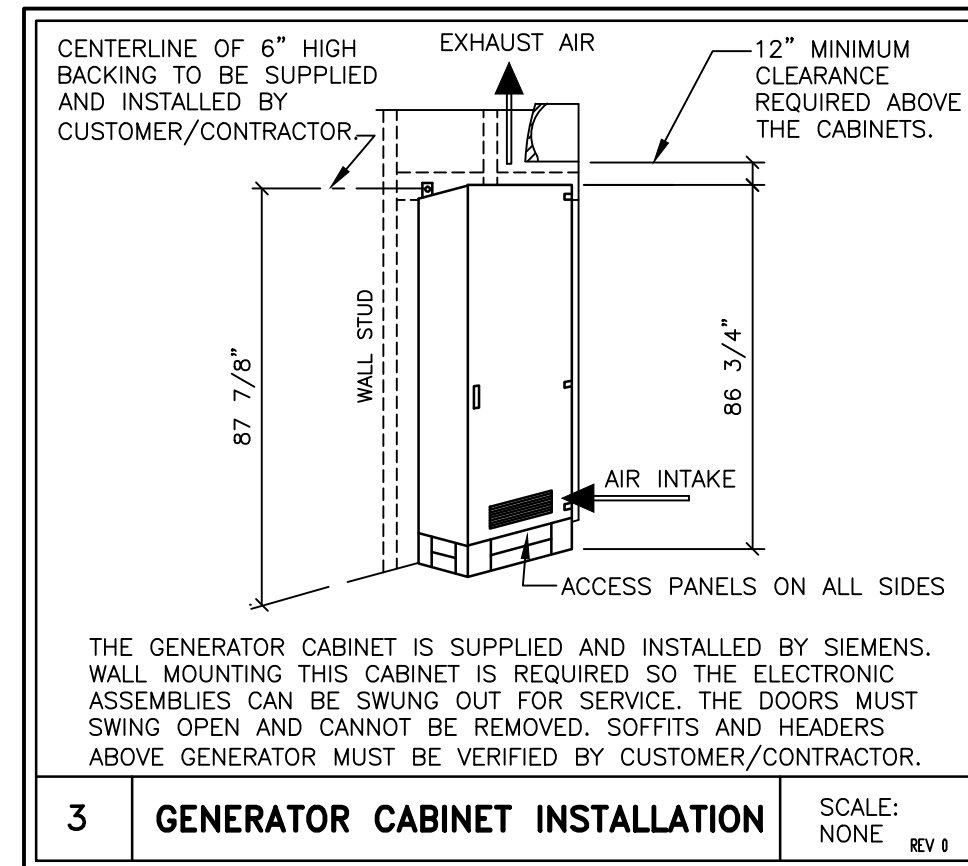
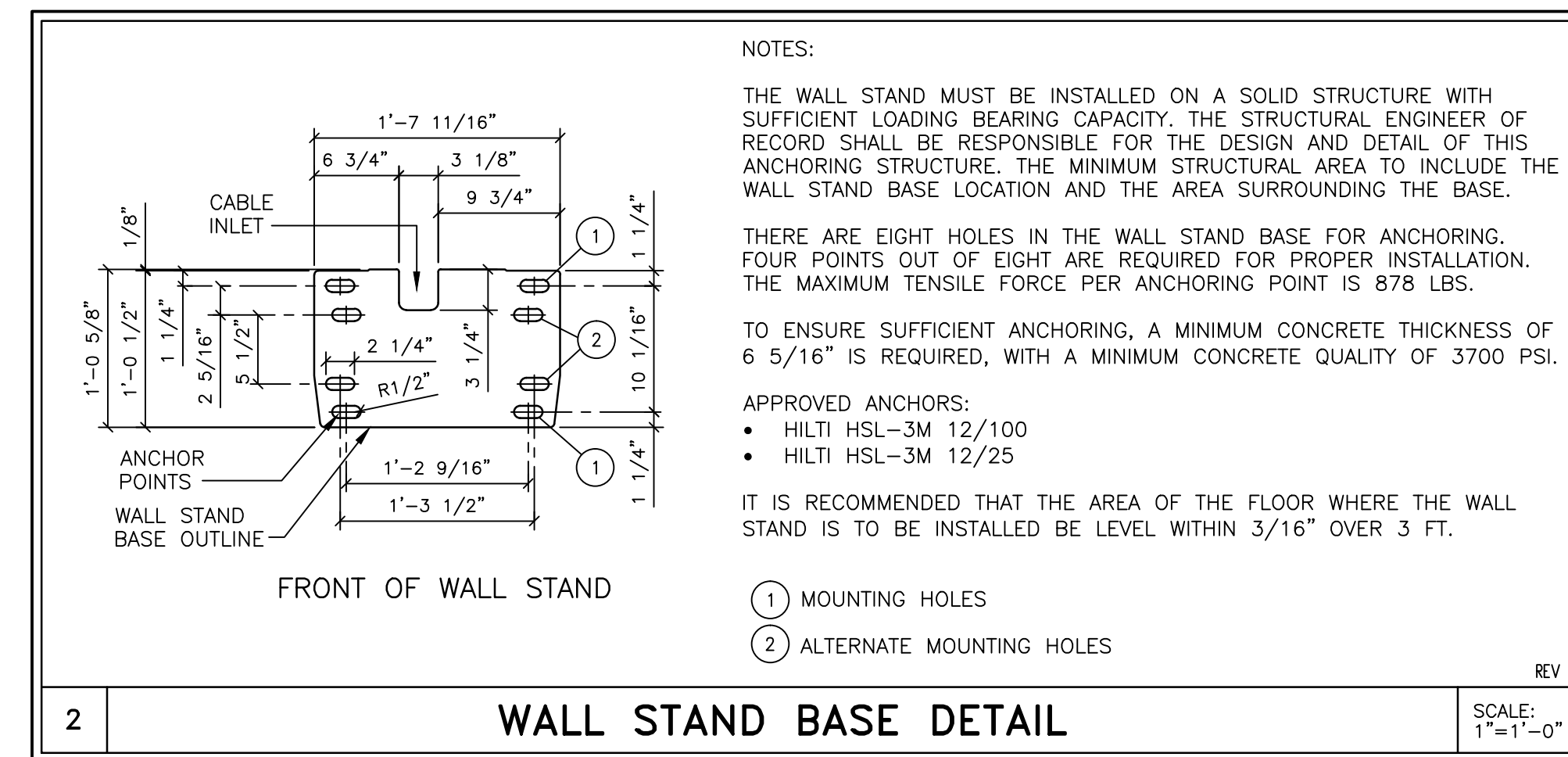
STRUCTURAL FLOOR PLAN

SCALE: 1/4" = 1'-0"



STRUCTURAL NOTES

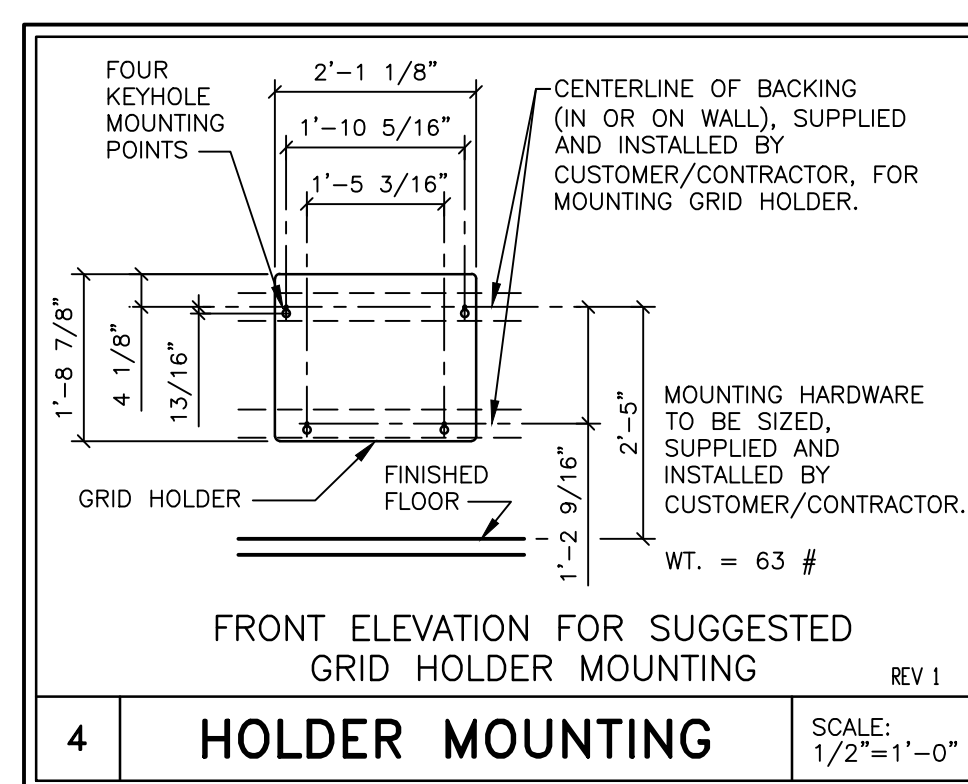
- 1) THE CUSTOMER/CONTRACTOR SHALL FURNISH AND INSTALL ALL STRUCTURAL SUPPORT MEMBERS AND NEEDED HARDWARE FOR THE INSTALLATION OF THE SIEMENS EQUIPMENT.
- 2) THE OVERHEAD STRUCTURAL SUPPORT SYSTEM SHALL BE FIXED, RIGID AND BRACED FOR SWAY.
- 3) ALL STRUCTURAL SUPPORT MEMBERS SHALL BE TRUE, SQUARE, LEVEL, PARALLEL AND COPLANAR WITH RESPECT TO EACH OTHER, WITH A HORIZONTAL STRUCTURAL SUPPORT MEMBER TO BE LOCATED AND SET WITH A TRANSIT.
- 4) ALL STRUCTURAL SUPPORT DETAILS SHOWN ARE SAMPLE DETAILS BASED UPON TYPICAL AND STANDARD BUILDING PRACTICES AND ARE NOT INTENDED AS ACTUAL CONSTRUCTION DETAILS. ALL CONSTRUCTION DETAILS AND SUPPORT CALCULATIONS SHALL BE PREPARED BY A PROFESSIONAL STRUCTURAL ENGINEER AT THE CUSTOMER'S EXPENSE. IN THE EVENT AN EXISTING SUPPORT SYSTEM IS TO BE USED, IT WILL BE THE CUSTOMER'S RESPONSIBILITY TO VERIFY THE INTEGRITY OF THAT SYSTEM.
- 5) MOUNTING PLATES, FRAMES, AND HARDWARE SUPPLIED BY SIEMENS AS DETAILED IN THIS DRAWING SET ARE INSTALLED BY SIEMENS UNLESS OTHERWISE REQUIRED. ANY DEVIATION FROM THE PROVIDED MATERIALS OR MOUNTING METHODS MUST BE DESIGNED AND DOCUMENTED BY THE STRUCTURAL ENGINEER OF RECORD. ALTERNATE MOUNTING MATERIALS (I.E. ANCHORS, THREADED ROD, BACKING PLATES, ETC.) MUST BE SUPPLIED BY THE CUSTOMER/CONTRACTOR. SIEMENS MAY REQUIRE ASSISTANCE FROM THE CUSTOMER/CONTRACTOR WITH INSTALLATION WHEN UTILIZING ALTERNATE MOUNTING MATERIALS.
- 6) ALL CEILING FIXTURES (I.E. AIR SUPPLY GRILLES, AIR RETURN GRILLES, EXHAUST GRILLES, SPRINKLER HEADS, INCANDESCENT AND FLUORESCENT LIGHT FIXTURES, INTERCOM SPEAKERS, MEDICAL GAS COLUMNS, ETC.) SHALL BE INSTALLED FLUSH MOUNTED WITH THE FINISHED CEILING TO PROVIDE FREE AND UNRESTRICTED TRAVEL OF THE SMS CEILING MOUNTED EQUIPMENT.
- 7) THE BOTTOM SIDE OF THE UNISTRUT CEILING GRID AND ANY CEILING MOUNTED SUPPORT PLATES ARE TO BE INSTALLED FLUSH WITH THE FINISHED CEILING. THE CUSTOMER/CONTRACTOR SHALL ALSO PROVIDE COVERSTRIPS FOR THE UNISTRUT.
- 8) THE STRUCTURAL PLANNING AS SHOWN ON THE 1/4" STRUCTURAL PLAN HAS BEEN COORDINATED WITH THE EQUIPMENT LOCATION AS SHOWN ON THE 1/4" EQUIPMENT LAYOUT PLAN. FOR THIS REASON, ANY DEVIATIONS FROM THE STRUCTURAL PLANNING AS SHOWN MUST BE APPROVED BY SMS PLANNING DEPARTMENT.
- 9) THE STRUCTURAL ENGINEER OF RECORD SHALL BE RESPONSIBLE FOR THE DESIGN AND DETAIL OF FLOOR, WALL, AND CEILING STRUCTURES IN ACCORDANCE WITH THE STRUCTURAL INFORMATION SHOWN, AND LOCAL GOVERNING BUILDING CODES.



ACCESSORY ITEMS MOUNTING

VARIOUS ACCESSORY ITEMS MAY BE PURCHASED WITH THIS SIEMENS SYSTEM THAT INCLUDE STORAGE BRACKETS FOR WALL MOUNTING. THE LOCATION OF THESE ITEMS WILL DEPEND ON EACH CUSTOMER'S PREFERENCE AND WORKFLOW. FOR ALL ACCESSORY ITEMS PURCHASED, THE CUSTOMER IS RESPONSIBLE FOR LOCATING AND INSTALLING ALL STORAGE BRACKETS, AND PROVIDING ANY NECESSARY BACKING OR MOUNTING SUPPORT FOR THESE ITEMS.

REV 0



ATTENTION:

- THIS DRAWING IS DESIGNED TO CONFORM TO FEATURES AND EQUIPMENT REQUIREMENTS PRESENTED AT THE TIME OF THEIR PREPARATION. SINCE BOTH THESE FACTORS ARE SUBJECT TO DESIGN MODIFICATION, THEY ARE NOT TO BE USED FOR CONSTRUCTION PURPOSES.

- THIS SET OF PLANS REPRESENTS A COMPLETE SET OF DETAILS AND SHOULD NOT BE SEPARATED.

- IT IS RECOMMENDED THAT THE SIEMENS DRAWINGS BE INCORPORATED WITH THE CONSTRUCTION DOCUMENTS FOR REFERENCE.

- ALL DIMENSIONS SHOWN ON THIS DRAWING ARE FROM FINISHED SURFACES.

- THIS DRAWING DOES NOT PROVIDE RADIATION SHIELDING REQUIREMENTS FOR X-RAY AND ASSOCIATED EQUIPMENT. THE CUSTOMER IS RESPONSIBLE FOR CONSULTING WITH A REGISTERED RADIATION PHYSICIST TO SPECIFY RADIATION PROTECTION.

MINIMUM CEILING HEIGHT W/RESTRICTION	CEILING HEIGHT WITHOUT RESTRICTION	RECOMMENDED CEILING HEIGHT
SEE RM HT REQMTS	SEE RM HT REQMTS	9'-6"

PROJECT MANAGER: RICH DEISTER TEL: (207) 712-3205 FAX: (207) 929-3776 EMAIL: RICH.DEISTER@SIEMENS.COM		SIEMENS	
BRIGHTON MEDICAL CENTER 335 BRIGHTON AVE., PORTLAND, ME 04102 FLUORO ROOM - LUMINOS AGILE MAX			
THE USE OR REPRODUCTION OF THIS TITLE BLOCK WITHOUT SIEMENS AUTHORIZATION WILL RESULT IN PROSECUTION UNDER FULL EXTENT OF THE LAW.		PROJECT #: 1601355	SHEET: S-101
ALL RIGHTS ARE RESERVED.		SHEET 3 OF 3	DRAWN BY: D. CAPSTICK
SCALE: AS NOTED REF: #FFKJW.7		DATE: 10/21/16	

SYM	DATE	DESCRIPTION
	10/21/16	R-101 VERSION A DATED 04/07/16 APPROVED BY CUSTOMER FOR FINALS.
-ISSUE BLOCK-		

LUMINOS AGILE
REV 10