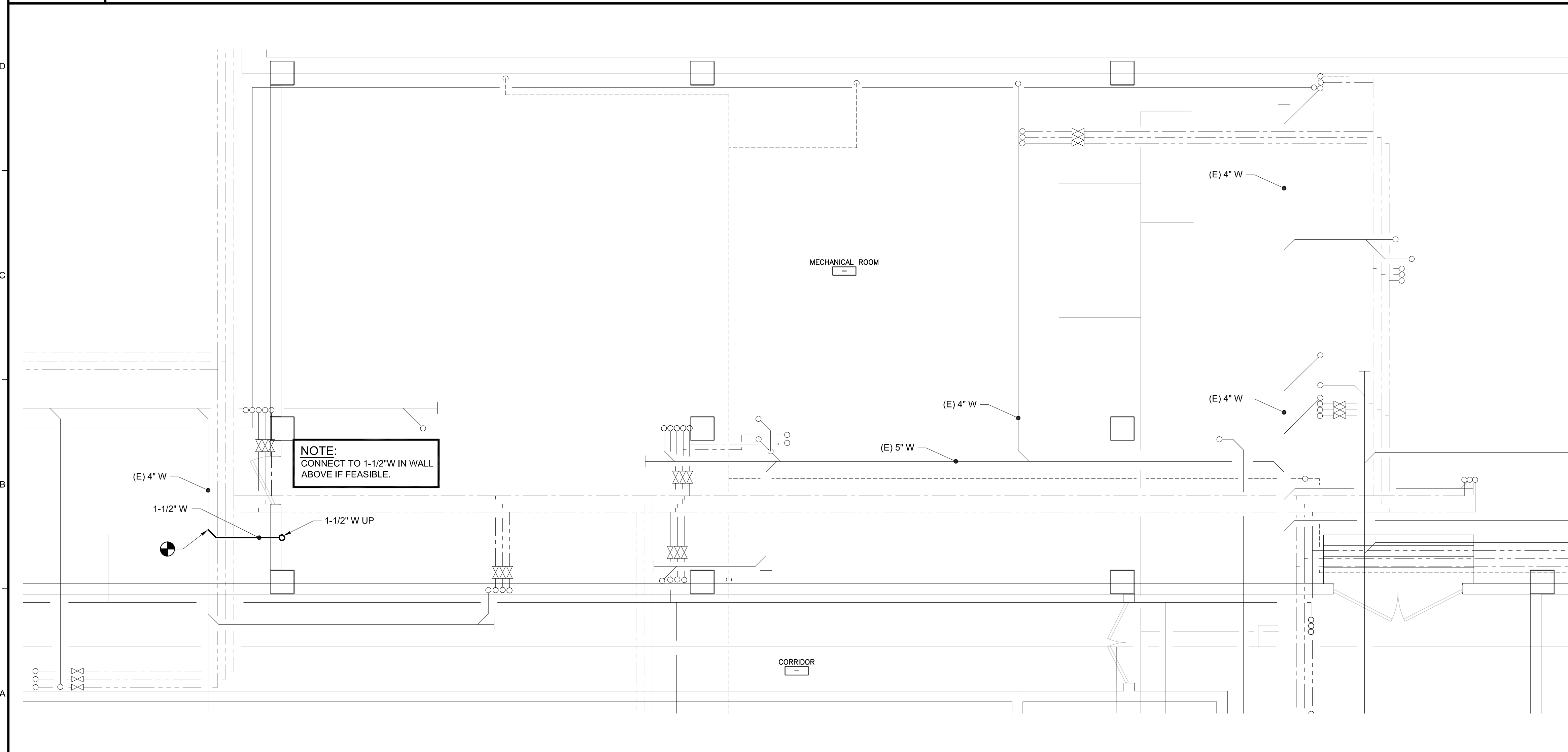


PLUMBING FIXTURE SCHEDULE

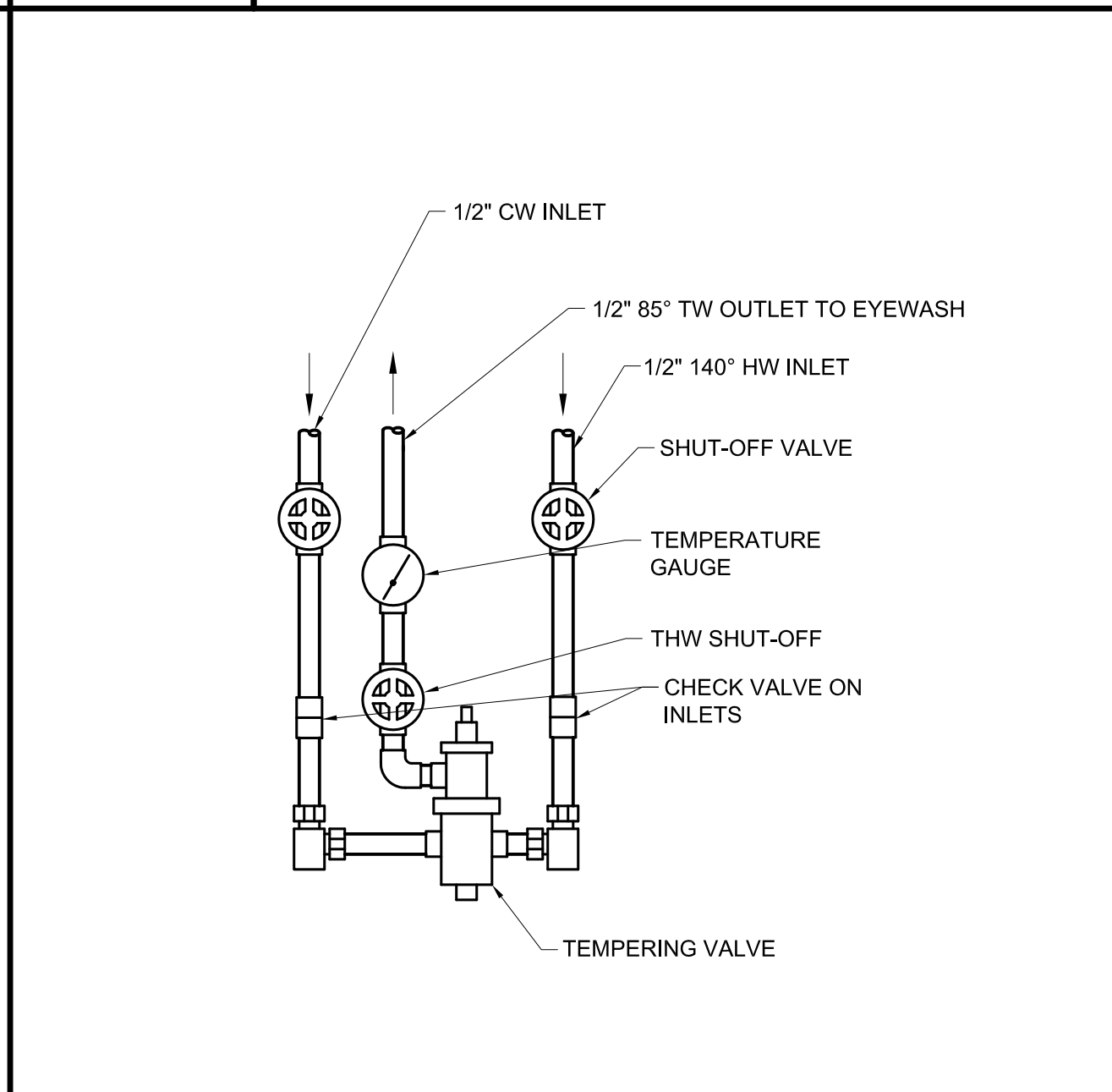
TAG	DESCRIPTION	BRANCH SIZES				NOTES
		CW	HW	VENT	WASTE	
P-1	HAND WASH SINK WALL MOUNT	1/2"	1/2"	1-1/2"	1-1/2"	TEMPERING VALVE WITH 1/2" INLETS AND OUTLET
EW-1	EMERGENCY EYE/FACE WASH - DECK MOUNTED	1/2"	1/2"	1-1/2"	1-1/2"	

E1 PLUMBING GROUND FLOOR PART PLAN
1/4"=1'-0"

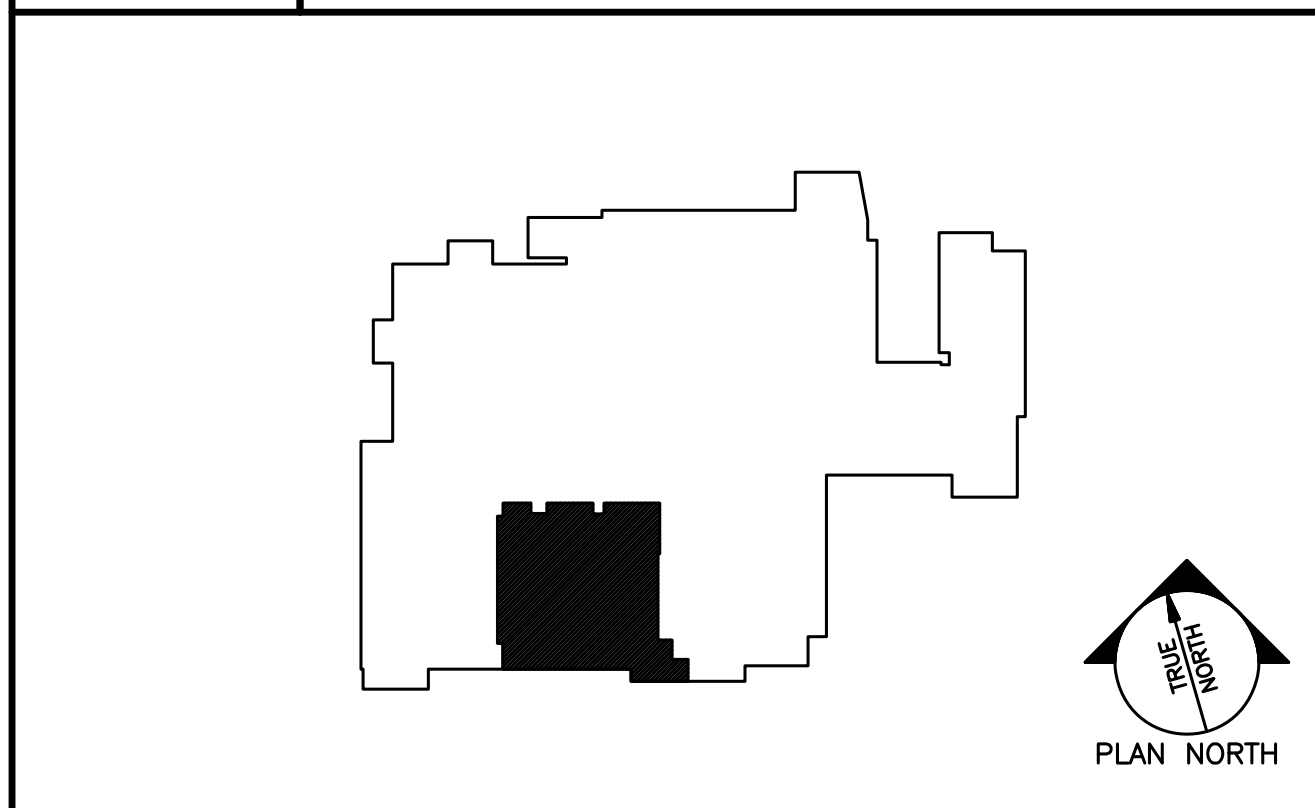
D9 SCHEDULES ~ PLUMBING
NONE



A1 PLUMBING BASEMENT PART PLAN
1/4"=1'-0"



B9 DETAIL ~ THERMOSTATIC MIXING VALVE PIPING
NONE (LOCATED ON WALL UNDER SINK)

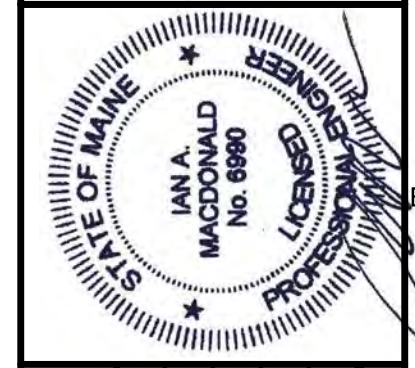


A9 KEY PLAN
NONE

DESIGN GROUP COLLABORATIVE
DCG
ARCHITECTURE DESIGN + PLANNING

10 Years in Service
Portland, Maine 04103
F: 207-231-2266
R: 207-231-2266
www.allied-eng.com

Allied Engineering
Structural Mechanical Electrical Commissioning



REVISIONS

NUMBER	DATE	BY	DESCRIPTION

Date: SEPTEMBER 25, 2015

Drawn By:	SCL
Checked By:	IAM
Project Mgr:	IAM
Project No.:	13101
Cad File:	13101_P.DWG
Graphic Scale:	0' = 1"

PLUMBING PART PLANS ~ BASEMENT AND GROUND FLOORS

MAINE MEDICAL CENTER
PREP NORDX RENOVATIONS
PORTLAND, MAINE

PL-100

N:\Projects\2015\13101 - MMC Brighton - Prep-NORDX Renovations\00 Drawing Files\13101_LP.dwg Sep 24, 2015 - 2:05pm