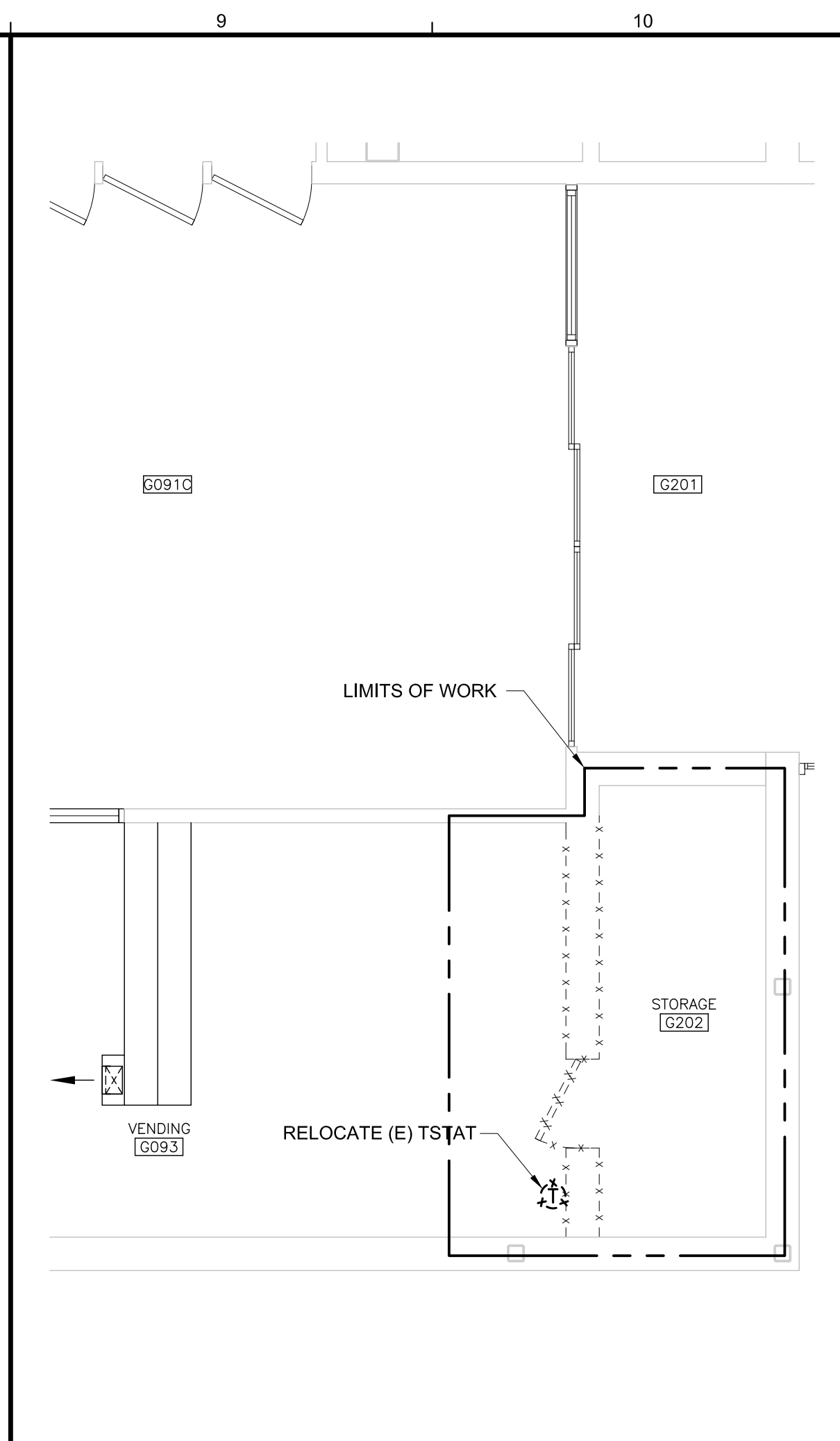
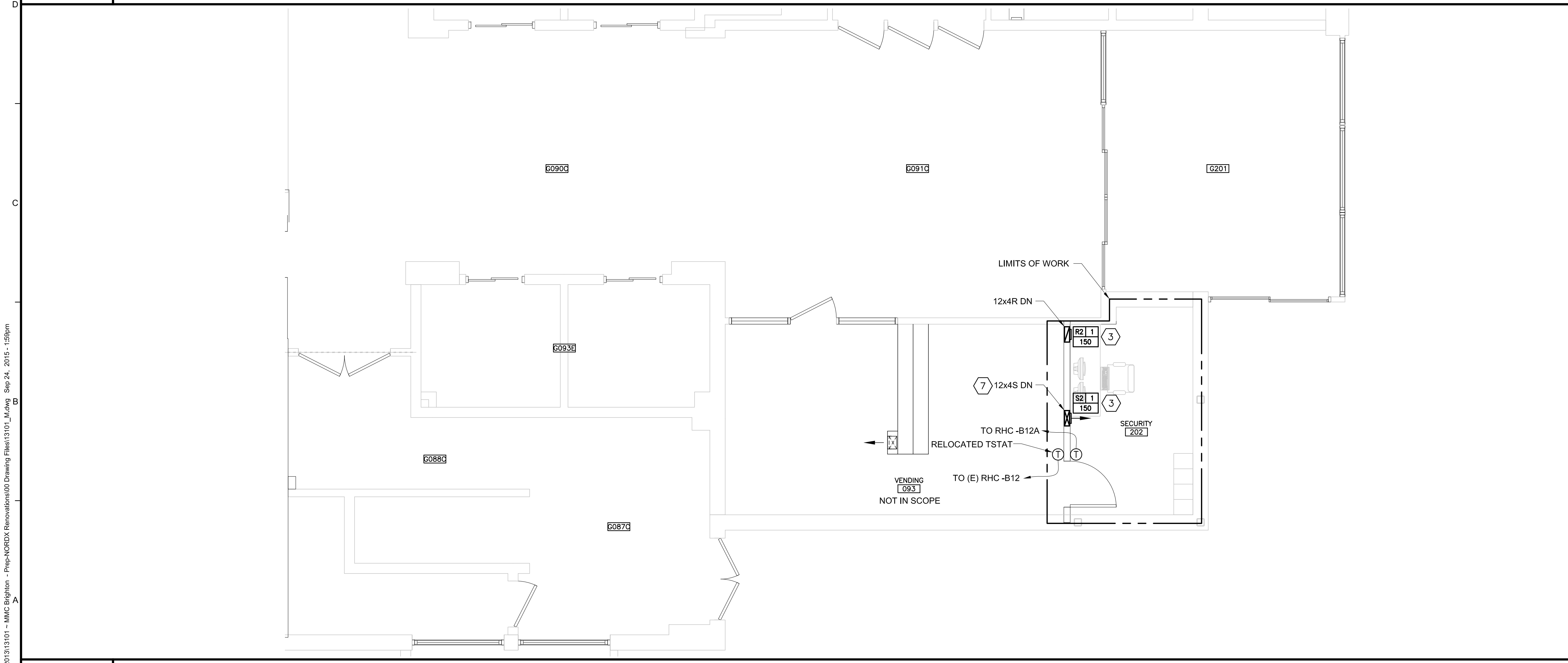


D1 MECHANICAL PART PLAN ~ BASEMENT
1/4"=1'-0"



D9 MECHANICAL DEMOLITION PART PLAN ~ GROUND FLOOR SECURITY OFFICE
1/4"=1'-0"

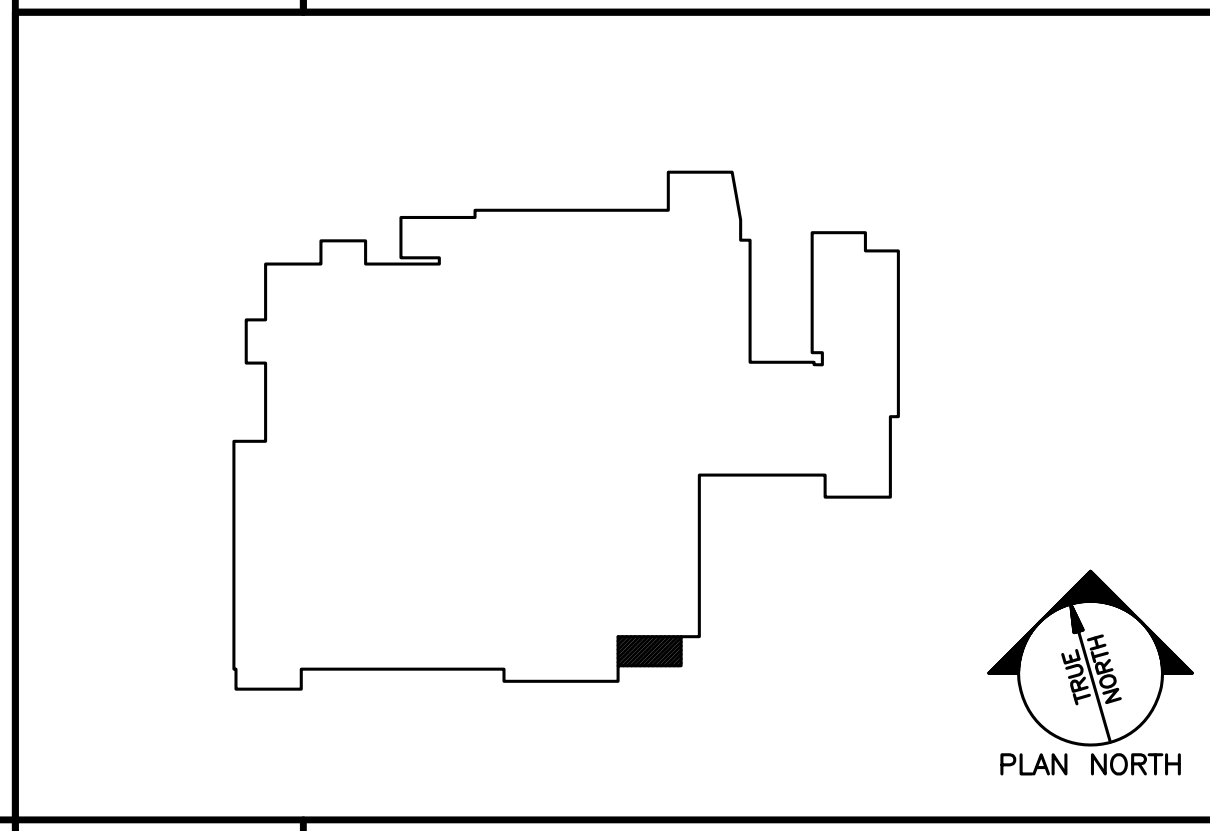


A1 MECHANICAL PART PLAN ~ GROUND FLOOR SECURITY OFFICE
1/4"=1'-0"

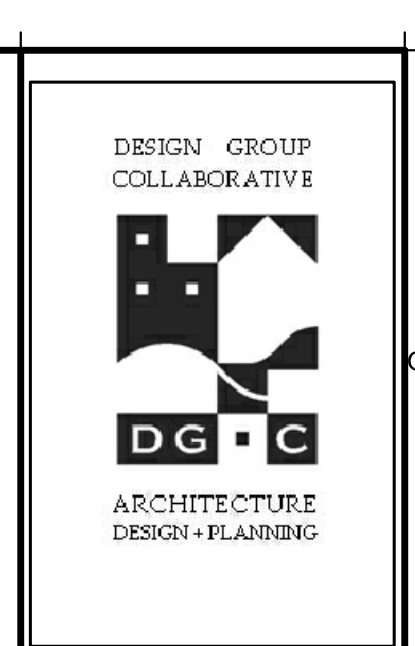
KEYED NOTES :

- 1 EXISTING GRILLE TO REMAIN; RE-BALANCE AS SPECIFIED.
- 2 CAP AND SEAL EXISTING DUCTWORK.
- 3 MOUNT BOTTOM OF GRILLE 7'-0" AFF.
- 4 MOUNT BOTTOM OF GRILLE 2'-0" AFF.
- 5 PROVIDE FIRE DAMPER WITH ACCESS DOOR AT FLOOR PENETRATION.
- 6 INSTALL DUCTWORK TIGHT TO STRUCTURE.
- 7 SERVED BY S-2.
- 8 SERVED BY S-6.

B9 KEYED NOTES
1/8"=1'-0"

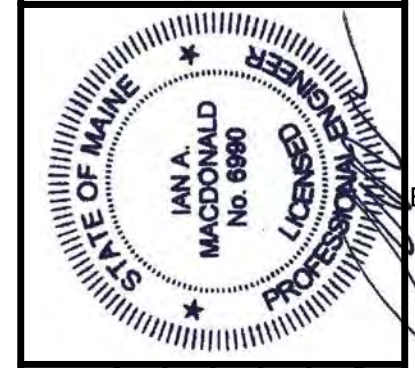


A9 KEY PLAN
NONE



100 Years Sheet
Portland, Maine 04103
E: 207-231-2266
F: 207-231-2266
W: www.allied-eng.com

Allied Engineering
Structural Mechanical Electrical Commissioning



REVISIONS		DESCRIPTION
NUMBER	DATE	BY

Date: SEPTEMBER 25, 2015
 Drawn By: SCL
 Checked By: IAM
 Project Mgr: IAM
 Project No: 13101
 Cad File: 11025_M.DWG
 Graphic Scale: 0'

MECHANICAL PART PLANS
 ~ GROUND FLOOR SECURITY OFFICE

MAINE MEDICAL CENTER
 PREP NORDX RENOVATIONS
 PORTLAND, MAINE

MH-102

N:\Projects\2015\13101 - MMC Bldg Renovation - Prep-NORDX Renovations\100 Drawing Files\13101_M.dwg Sep 24, 2015 - 1:59pm