

GENERAL NOTES :

- NOT USED
- ADD VOLUME DAMPERS TO EXISTING DUCTS AT ALL GRILLES IN THE RENOVATED SPACES, IF NOT ALREADY INSTALLED.
- ADD ALTERNATE: CLEAN EXISTING GRILLES AND REGISTERS TO BE REUSED IN RENOVATED SPACES AS REQUIRED.
- ADD ALTERNATE: CLEAN EXISTING HOT WATER COILS TO BE REUSED IN RENOVATED SPACES AS REQUIRED.

KEYED NOTES :

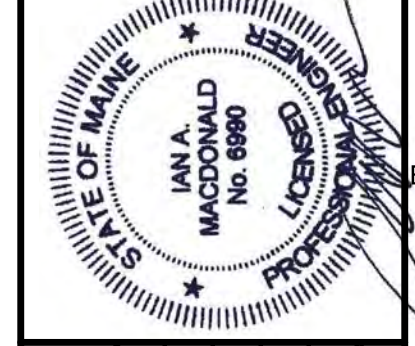
- EXISTING GRILLE TO REMAIN; RE-BALANCE AS SPECIFIED.
- CAP AND SEAL EXISTING DUCTWORK.
- MOUNT BOTTOM OF GRILLE 7'-0" AFF.
- MOUNT BOTTOM OF GRILLE 2'-0" AFF.
- PROVIDE FIRE DAMPER WITH ACCESS DOOR AT FLOOR PENETRATION.
- INSTALLED DUCTWORK TIGHT TO STRUCTURE.
- SERVED BY S-2.
- SERVED BY S-6.

B9 KEYED NOTES
1/4"=1'-0"



10 Years in Service
Portland, Maine 04103
F: 207-231-2266
W: www.allied-eng.com

Allied Engineering
Structural Mechanical Electrical Commissioning

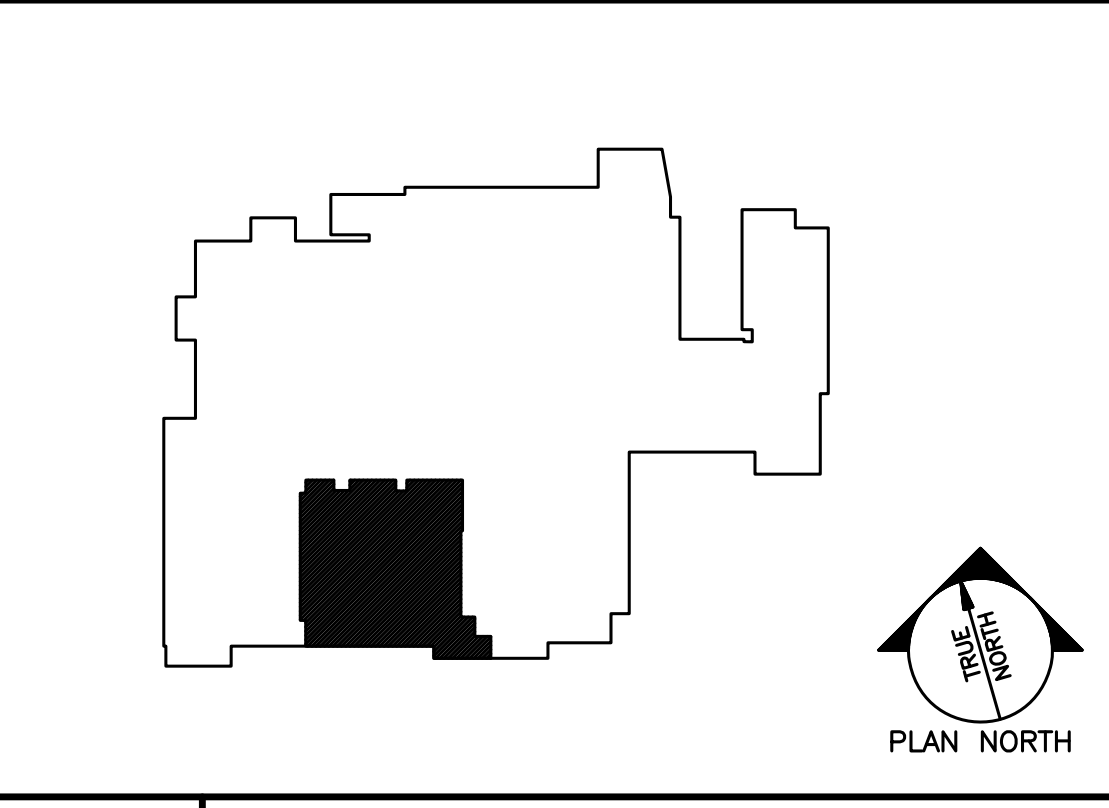


REVISIONS		DESCRIPTION
NUMBER	DATE	BY

Date: SEPTEMBER 25, 2015
 Drawn By: SCL
 Checked By: IAM
 Project Mgr: IAM
 Project No: 13101
 Cad File: 11025_M.DWG
 Graphic Scale: 0'

MECHANICAL PART PLAN ~ BASEMENT

MAINE MEDICAL CENTER
 PREP NORDX RENOVATIONS
 PORTLAND, MAINE



A9 KEY PLAN
NONE

N:\Projects\2015\13101 - MMC Brighton - Prep-NORDX Renovations\100 Drawing Files\13101_M.dwg Sep 24, 2015 - 1:56pm

A1 MECHANICAL PART PLAN ~ BASEMENT
1/4"=1'-0"

MH-100