



Maine Medical Center

PREP NORDX RENOVATIONS

Portland, Maine

ISSUED FOR CONSTRUCTION

SEPTEMBER 25, 2015

DRAWING INDEX

ARCHITECTURAL

- GI-000 COVER SHEET
- GI-001 NOTES AND CODE COMPLIANCE
- GI-002 CODE SUMMARY
- AD-101 REMOVALS PLAN
- AE-101 FLOOR PLAN
- AE-102 REFLECTED CEILING PLAN
- AE-200 INTERIOR ELEVATIONS AND DETAILS
- AE-600 SCHEDULES AND FINISH PLAN
- AE-701 FF&E PLAN

PLUMBING

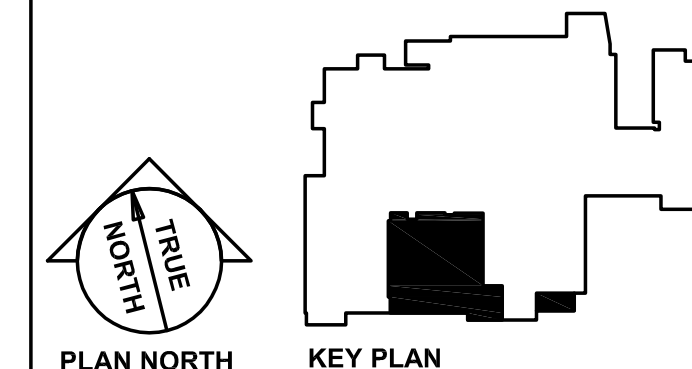
- P-000 PLUMBING AND HVAC ABBREVIATIONS AND LEGEND
- PL-100 PLUMBING PART PLANS BASEMENT AND GROUND FLOOR

MECHANICAL

- MD-100 MECHANICAL DEMOLITION PART PLANS BASEMENT
- MD-101 MECHANICAL DEMOLITION PART PLANS GROUND FLOOR
- MH-100 MECHANICAL PART PLANS BASEMENT
- MH-101 MECHANICAL PART PLANS GROUND FLOOR
- MH-102 MECHANICAL PART PLANS GROUND FLOOR SECURITY OFFICE
- MH-500 MECHANICAL SCHEDULES, DETAILS AND NOTES

ELECTRICAL

- E-000 ELECTRICAL LEGEND SHEET
- ED-100 ELECTRICAL REMOVALS PLAN AND NOTES
- EP-100 ELECTRICAL POWER SYSTEMS PLAN
- EL-100 ELECTRICAL LIGHTING PLAN
- E-500 ELECTRICAL SCHEDULES, DETAILS AND NOTES



REV.	DESCRIPTION	DATE
--	--	--
--	--	--
--	--	--

ISSUED FOR CONSTRUCTION
09 / 25 / 15

CURRENT ISSUE STATUS:



MAINE MEDICAL CENTER
PREP NORDX RENOVATIONS
PORTLAND, MAINE

COVER SHEET

SHEET TITLE:	9/25/15		GRAPHIC SCALE:
DATE:	AS NOTED		
SCALE:	122033	SHEET No.	
PROJECT NO.:	LMC		
DRAWN BY:	CMH		
A/E OF RECORD:			

GI-000

DESIGN GROUP COLLABORATIVE
ARCHITECTURE
DESIGN | PLANNING

22 Free Street Suite 303
PORTLAND, MAINE 04101
T (207) 699-3300

40 Church Street Studio A
ELLSWORTH, MAINE 04605
T (207) 664-0560

PROJECT LOCATION:

GROUND FLOOR
MAINE MEDICAL CENTER (BRIGHTON CAMPUS)
335 BRIGHTON AVENUE
PORTLAND, ME 04102