

1. ALL FIRE ALARM DEVICES SHALL BE BY OTHERS.

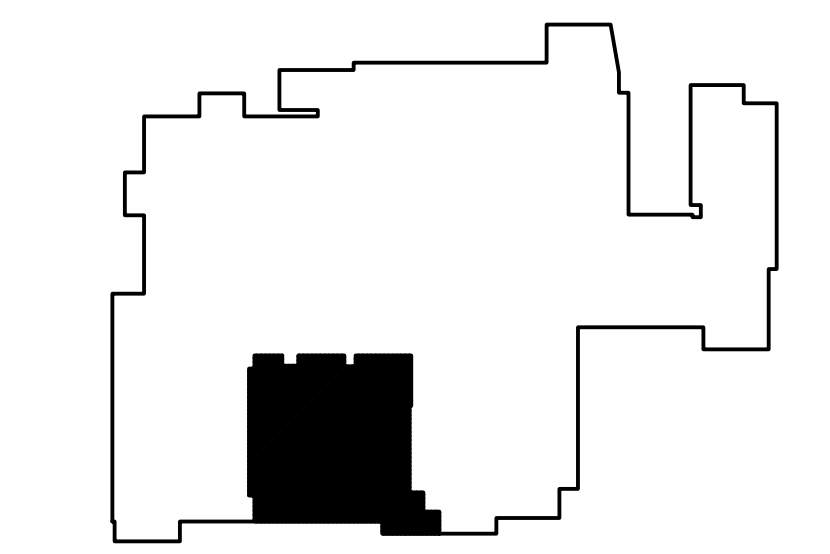
E9 DRAWING NOTES

NO SCALE

- 1 JUNCTION BOXES (ONE FOR POWER, ONE FOR TEL/DATA) WITH WHIPS AND CONNECTIONS TO SYSTEM FURNITURE. VERIFY EXACT NUMBERS OF WIRES AND CIRCUIT REQUIREMENTS AND ENTRY POINTS. PROVIDE (1) 1" CONDUIT TO ACCESSIBLE CEILING SPACE FOR TEL/DATA, UNLESS NOTED OTHERWISE.
- 2 PROVIDE CEILING MOUNTED SPEAKER TO MATCH WITH THE EXISTING SOUND/PAGING SYSTEM. EXTEND WIRING TO EXISTING SYSTEM.
- 3 RUN (2)#12 & (1)#12G IN 3/4" C TO EXISTING PANELS L2G-L1 & L2G-L2 RESPECTIVELY. PROVIDE 1P-20A CB. CIRCUIT NUMBERS SHOWN ARE FOR IDENTIFYING PURPOSES ONLY.
- 4 - NOT USED -
- 5 MOTORIZED DOORS #071 AND #077 TO BE ON THE SAME CIRCUIT. EXTEND (2)#12 & (1)#12G IN 3/4" C TO NEAREST 120V EMERGENCY LIFE SAFETY PANEL. PROVIDE 1P-20A CB.
- 6 EXISTING SECURITY EQUIPMENT TO REMAIN.

B9 KEYED NOTES

NO SCALE



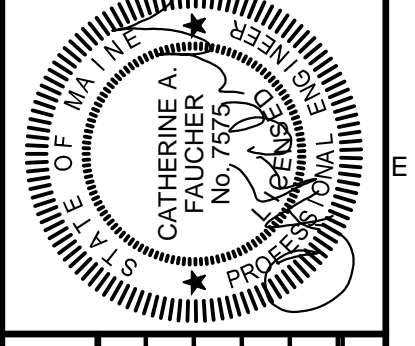
A9 KEY PLAN

NO SCALE



166 Veranda Street
Portland, Maine 04103
Phone: 207.251.2266
www.allied-eng.com

Allied Engineering
Structural Mechanical Electrical Commissioning
PROJECT NO. 13101



| REVISIONS | | | |
|-----------|------|----|-------------|
| NUMBER | DATE | BY | DESCRIPTION |
| | | | |
| | | | |
| | | | |

Date: SEPTEMBER 25, 2015
Drawn By: GMC
Checked By: KN
Project Mgr: IAM
Project No: 13101
Cad File: 13101_E.dwg
Graphic Scale: 0 1"

ELECTRICAL POWER SYSTEMS PLAN

**MAINE MEDICAL CENTER
PREP NORDX RENOVATIONS**
PORTLAND, MAINE

EP-100

N:\Projects\2013\13101 - MMC Nordx Renovations\00 Drawing Files\13101_E.dwg Sep 24, 2015 - 10:20am