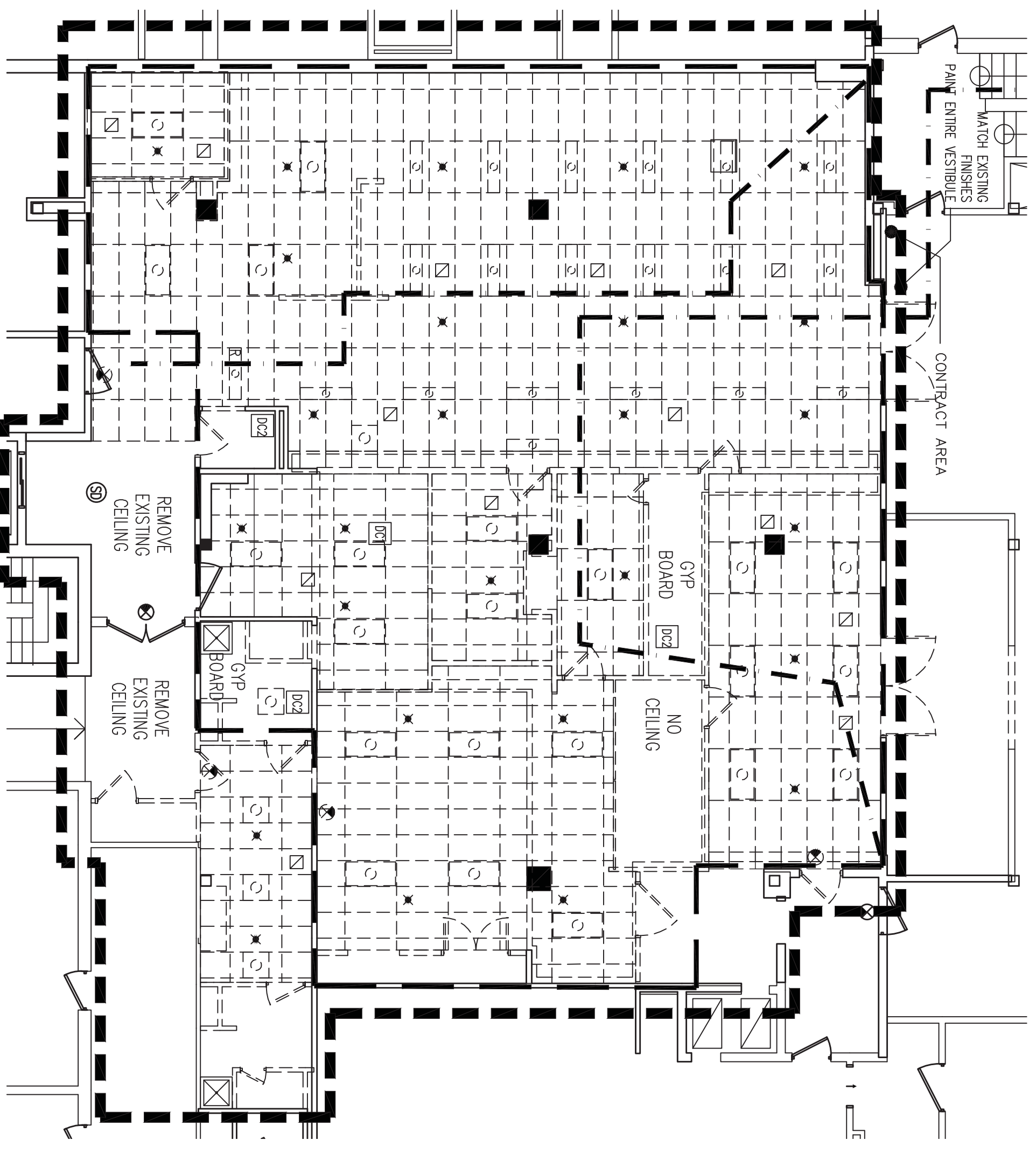


1 Demolition Plan

Scale 1/8" = 1'-0"



2 Demolition Ceiling Plan

Scale 1/8" = 1'-0"

LEGEND

- EXISTING PARTITION TO BE REMOVED
- EXISTING PARTITION TO REMAIN
- - - EXISTING DOOR TO BE REMOVED
- - - EXISTING DOOR TO REMAIN
- R = REMOVE
- N = NEW
- O.H. = OPPOSITE HAND

GENERAL POWER NOTES

1. GROUNDING OF HYPERBARIC CHAMBERS ARE TO BE CONNECTED ONLY TO THE EQUIPMENT GROUND IN ACCORDANCE WITH NFPA 99 AND NFPA 70. ADDITIONAL GROUNDS SUCH AS EARTH OR DRIVEN GROUNDS SHOULD NOT BE PERMITTED.
2. NFPA-99/2005 EDITION-20-2.7.1.1 THE REQUIREMENTS OF NFPA 70, NATIONAL ELECTRICAL CODE, OR LOCAL ELECTRICAL CODES SHALL APPLY TO ELECTRICAL WIRING AND EQUIPMENT IN HYPERBARIC FACILITIES WITHIN THE SCOPE OF THIS CHAPTER.
3. NFPA-99/2005 EDITION-20-2.7.1.2 ALL HYPERBARIC CHAMBER SERVICE EQUIPMENT, SWITCHBOARDS, PANELS, OR CONTROL DEVICES SHALL BE INSTALLED IN ACCORDANCE WITH THE REQUIREMENTS OF CHAPTER 4, OF THIS STANDARD FOR HYPERBARIC SYSTEMS BASED IN HEALTH CARE FACILITIES.
4. NFPA-99/2005 EDITION-20-2.7.2.1 ALL HYPERBARIC FACILITIES INTENDED FOR HUMAN OCCUPANCY SHALL CONTAIN AN ELECTRICAL SERVICE THAT IS SUPPLIED FROM TWO INDEPENDENT SOURCES OF ELECTRIC POWER.
5. NFPA-99 (2005 EDITION)-20-2.7.2.1.2 FOR HYPERBARIC FACILITIES USING PRIME-MOVER-DRIVEN GENERATOR SET, IT SHALL BE DESIGNATED AS THE "EMERGENCY SYSTEM" AND SHALL MEET THE REQUIREMENTS OF CHAPTER 4, OF THIS STANDARD FOR HYPERBARIC SYSTEMS BASED IN HEALTH CARE FACILITIES.
6. NFPA-99 (2005 EDITION)-20-2.7.2.1.3 ALL ELECTRICAL EQUIPMENT CONNECTED TO OR USED IN COMMUNICATION WITH HYPERBARIC FACILITIES SHALL BE INSTALLED IN ACCORDANCE WITH THE REQUIREMENTS OF CHAPTER 4, OF THIS STANDARD FOR HYPERBARIC SYSTEMS BASED IN HEALTH CARE FACILITIES.
7. NFPA-99 (2005 EDITION)-20-2.7.2.1.3 ALL ELECTRICAL EQUIPMENT CONNECTED TO OR USED IN COMMUNICATION WITH HYPERBARIC FACILITIES SHALL BE INSTALLED IN ACCORDANCE WITH THE REQUIREMENTS OF CHAPTER 4, OF THIS STANDARD FOR HYPERBARIC SYSTEMS BASED IN HEALTH CARE FACILITIES.
8. NFPA-99 (2005 EDITION)-20-2.7.3.1.1 WIRING METHODS, FIXED WIRING SHALL BE INSTALLED IN THREADED RMC OR IMC ENCLOSURES.
9. NFPA-99 (2005 EDITION)-20-2.7.3.1.2 A CONTINUOUS GROUND SHALL BE MAINTAINED BETWEEN ALL CONDUCTIVE SURFACES ENCLOSED ELECTRICAL CIRCUITS AND THE CHAMBER HULL USING APPROVED GROUNDING MEANS.
10. NFPA-99 (2005 EDITION)-20-2.7.3.1.3 ALL THREADED CONDUIT SHALL BE THREADED WITH AN NPT STANDARD CONDUIT CUTTING DE THAT PROVIDES 0.75" TAPER PER FT.
11. NFPA-99/2005 EDITION-20-2.7.3.1.4 ALL THREADED CONDUIT SHALL BE MADE WEBCORROPT TO PREVENT SPARKING WHEN FAULT CURRENT FLOWS THROUGH THE CONDUIT SYSTEM.
12. NFPA-99/2005 EDITION-20-2.7.4.1 THE CHAMBER SHALL BE GROUNDED ACCORDING TO THE REQUIREMENTS OF NFPA 70, NATIONAL ELECTRICAL CODE, ARTICLE 250, GROUNDING. RESISTANCE BETWEEN THE CHAMBER AND GROUND POINT SHALL NOT EXCEED 1 OHM.
13. NFPA-99 (2005 EDITION)-20-2.7.5.1.1 ALL ASSOCIATED CONDUITS SHALL MEET THE FOLLOWING REQUIREMENTS: (1) BE ELEC-ED (2) BE INSTALLED IN ACCORDANCE WITH THE REQUIREMENTS OF NFPA 70, NATIONAL ELECTRICAL CODE, ARTICLE 250, GROUNDING.
14. NFPA-99/2005 EDITION-20-2.7.5.1.2 ALL OTHER ELECTRICAL DEVICES OUTSIDE THE CHAMBER SHALL MEET THE REQUIREMENTS OF NFPA 70.

DEMOLITION GENERAL NOTES

1. NOTIFY ARCHITECT OF ANY DISCREPANCIES BETWEEN FIELD CONDITIONS AND CONSTRUCTION DOCUMENTS.
2. PATCH AND REPAIR EXISTING SUB-FLOOR TO SMOOTH AND ACCEPTABLE SURFACE IN PREPARATION OF NEW FLOOR FINISHES.
3. REPLACE EXIST. ORB, DAMAGED AS RESULT OF DEMO, PATCH AND REPAIR WALLS TO SMOOTH SURFACE AND PREPARE FOR PAINT AND BASE APPLICATION.
4. ANY EQUIPMENT, FURNITURE, FIXTURES ETC. SHALL BE STORED OR DISPOSED AS PER HOSPITAL'S DIRECTION.
5. ALL DEMO DEBRIS SHALL BE REMOVED TO SPECIFIED TRUCKS OR TRAILERS. ALL DEMO PARTITIONS, DISCONNECT AND REMOVE DAMAGED WIRING TO SOURCE.
6. RETURN REMOVED LIGHT FIXTURES NOT SCHEDULED FOR RELOCATION TO HOSPITAL REPRESENTATIVE.

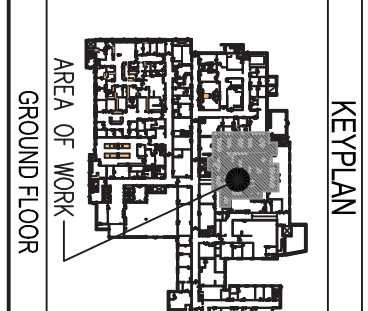
DEMOLITION KEYED NOTES

- [04] REMOVE ALL FLOORING IN CONTRACT AREA UNDO.
- [08] REMOVE SINK, CAP PLUMBING BELOW SURFACE TO CODE.
- [0C] REMOVE EXISTING WATER CLOSET, CAP PLUMBING BELOW SURFACE TO CODE.
- [0D] REMOVE EXISTING SINK AND COUNTER, CAP PLUMBING BELOW SURFACE TO CODE.
- [0E] REMOVE ALL WALL FINISHES THROUGHOUT CONTRACT AREA.
- [0F] NEW OPENING FOR PROPOSED DOOR.
- [0G] REMOVE FOR RELOCATION ALL FIXTURES & EQUIPMENT.
- [0H] REMOVE DOORS, FRAMES AND HARDWARE FOR RELOCATION.
- [0I] REMOVE EXISTING TOILET, PREP AREA AND FITTINGS FOR NEW FLOOR MOUNTED TOILET.
- [0J] REMOVE EXISTING CABD READER FOR RELOCATION.

DEMOLITION REFLECTED CEILING KEYED NOTES

- [0C] REMOVE CEILING GRID & TILE, LIGHT FIXTURES, LIFE SAFETY.
- [0C2] REMOVE GYP BOARD CEILING.

KEY PLAN



Portland, ME
Floor: GROUND FLOOR
Area of Work: 4,333 SQFT

| Issued to: | Hospital Owner | Bldg. Dept | G. C. | Fire Marsh | DLRS | For: | Review | Preliminary | Approval | Pricing | Construction | Comment |
|------------|----------------|------------|-------|------------|------|------|--------|-------------|----------|---------|--------------|------------|
| Date | 12.02.14 | | | | | | | | | | | REVIEW SET |
| | 01.07.15 | | | | | | | | | | | |
| | 01.23.15 | | | | | | | | | | | |
| | 03.20.15 | | | | | | | | | | | |

| Rev No. | Date | Issued to: | Hospital Owner | Bldg. Dept | G. C. | Fire Marsh | DLRS | For: | Review | Preliminary | Approval | Pricing | Construction | Comment |
|---------|----------|------------|----------------|------------|-------|------------|------|------|--------|-------------|----------|---------|--------------|------------|
| | 12.02.14 | | | | | | | | | | | | | REVIEW SET |
| | 01.07.15 | | | | | | | | | | | | | |
| | 01.23.15 | | | | | | | | | | | | | |
| | 03.20.15 | | | | | | | | | | | | | |

RestorixHealth
Excellence in Wound Care

Maine MC
Class "B" Chamber Hyperbaric Suite
335 BRIGHTON AVENUE, PORTLAND ME

DENNIS NOSKIN ARCHITECTS
100 WHITE PLAINS ROAD TARRYTOWN, NY 10591
DNARCHITECT.COM T 914 631 2345 F 631 8776

Licensed Architect
Dennis Noskin
No. 4178

Drawing Name
DEMOLITION PLAN AND REFLECTED CEILING PLAN
SCALE: AS NOTED

Drawing Number
D-1

Project Number
14091

3/20/15

REVIEW SET ONLY - NOT FOR CONSTRUCTION