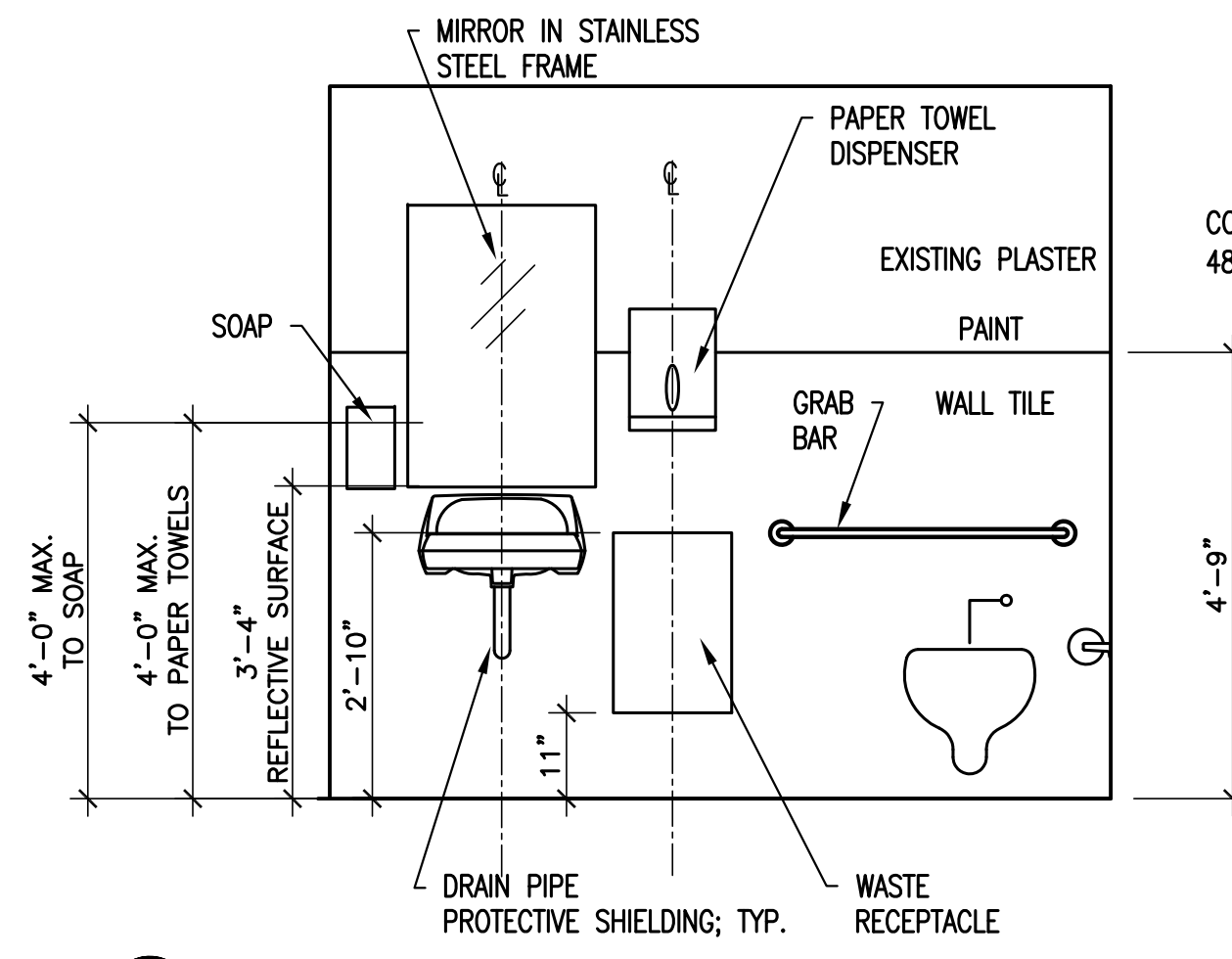


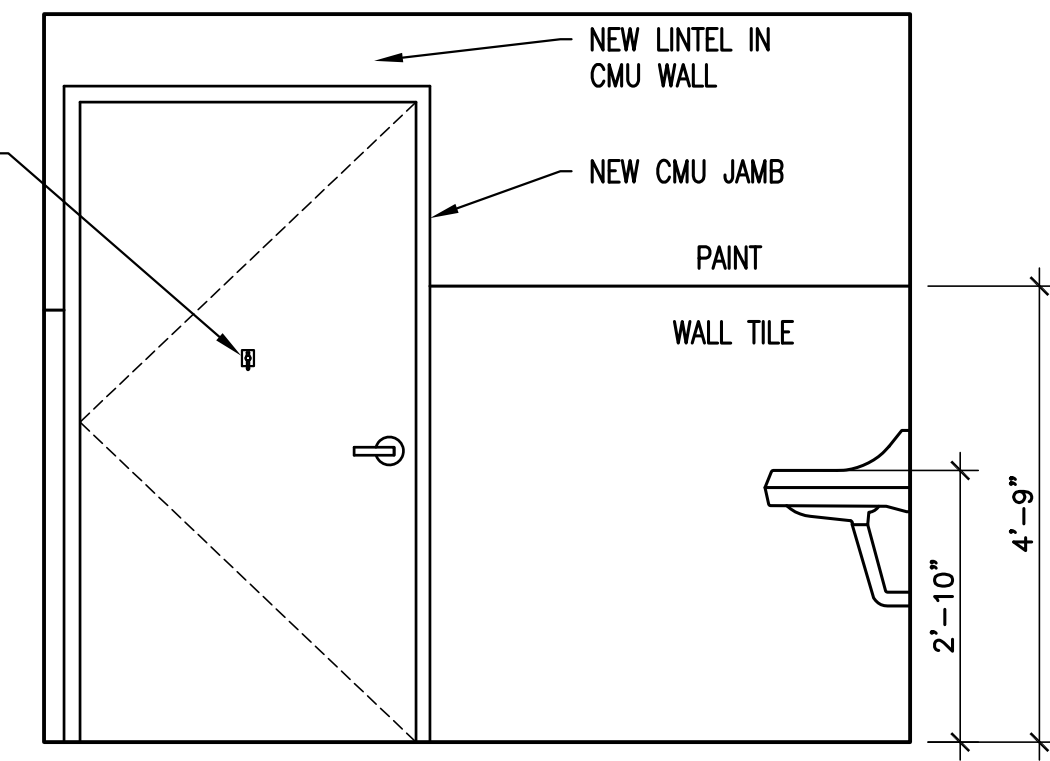
Thursday, December 11, 2014 3:51:49 PM BRIDGTON AARON KLEIN

H:\MASTER PROJ FILES\MMC-14132-BMC CAMPUS TOILET ROOMS\14132 - WORKING FILES\CAD\BMC TOILET ROOM PROJECT 2014.DWG

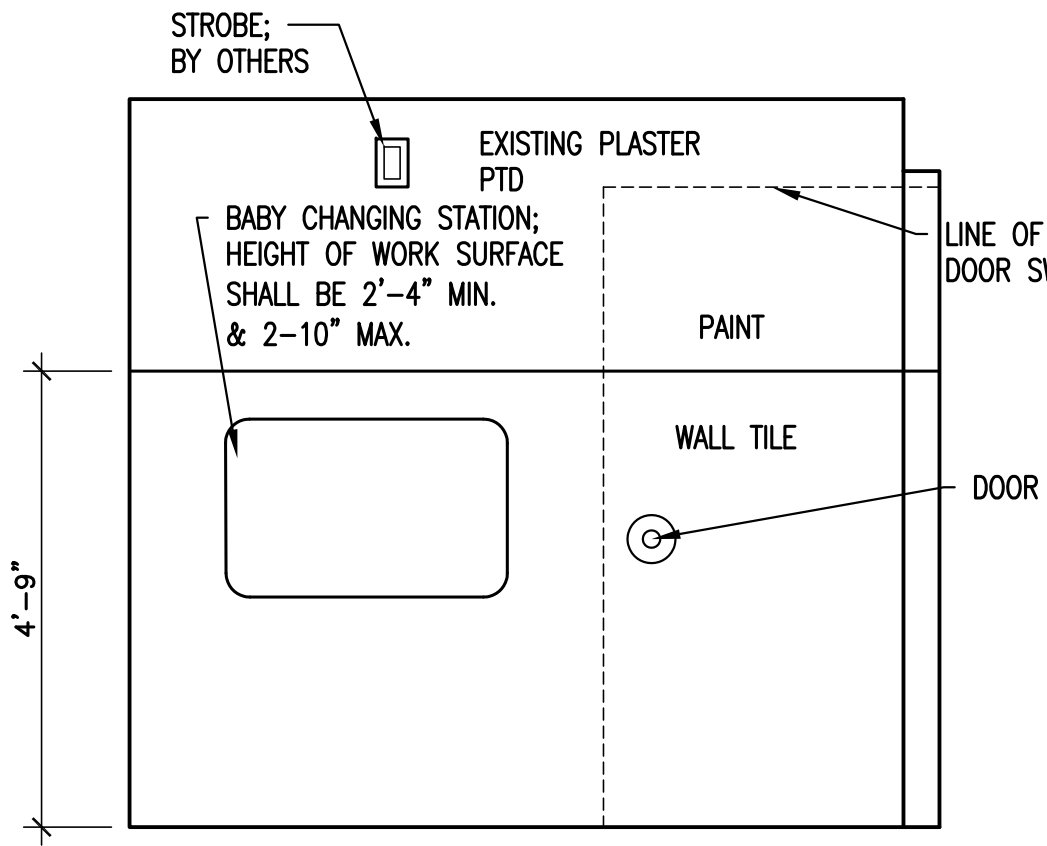
*NOTE:
SEE DETAIL 4, SHEET A2.0 FOR TYPICAL WALL TILE LAYOUTS



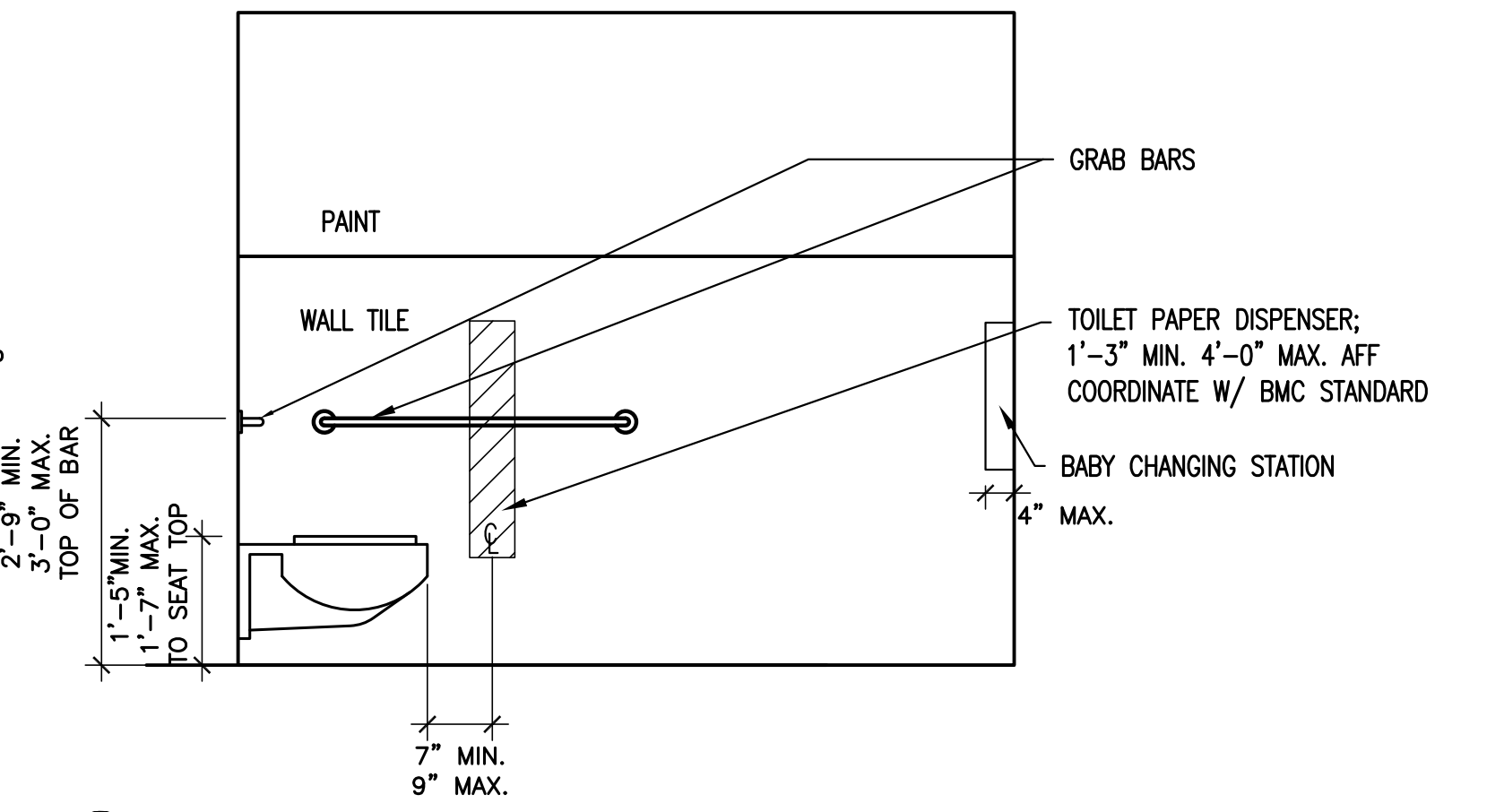
11 INTERIOR ELEVATION - TOILET ROOM G160
1/2" = 1'-0"



12 INTERIOR ELEVATION - TOILET ROOM G160
1/2" = 1'-0"



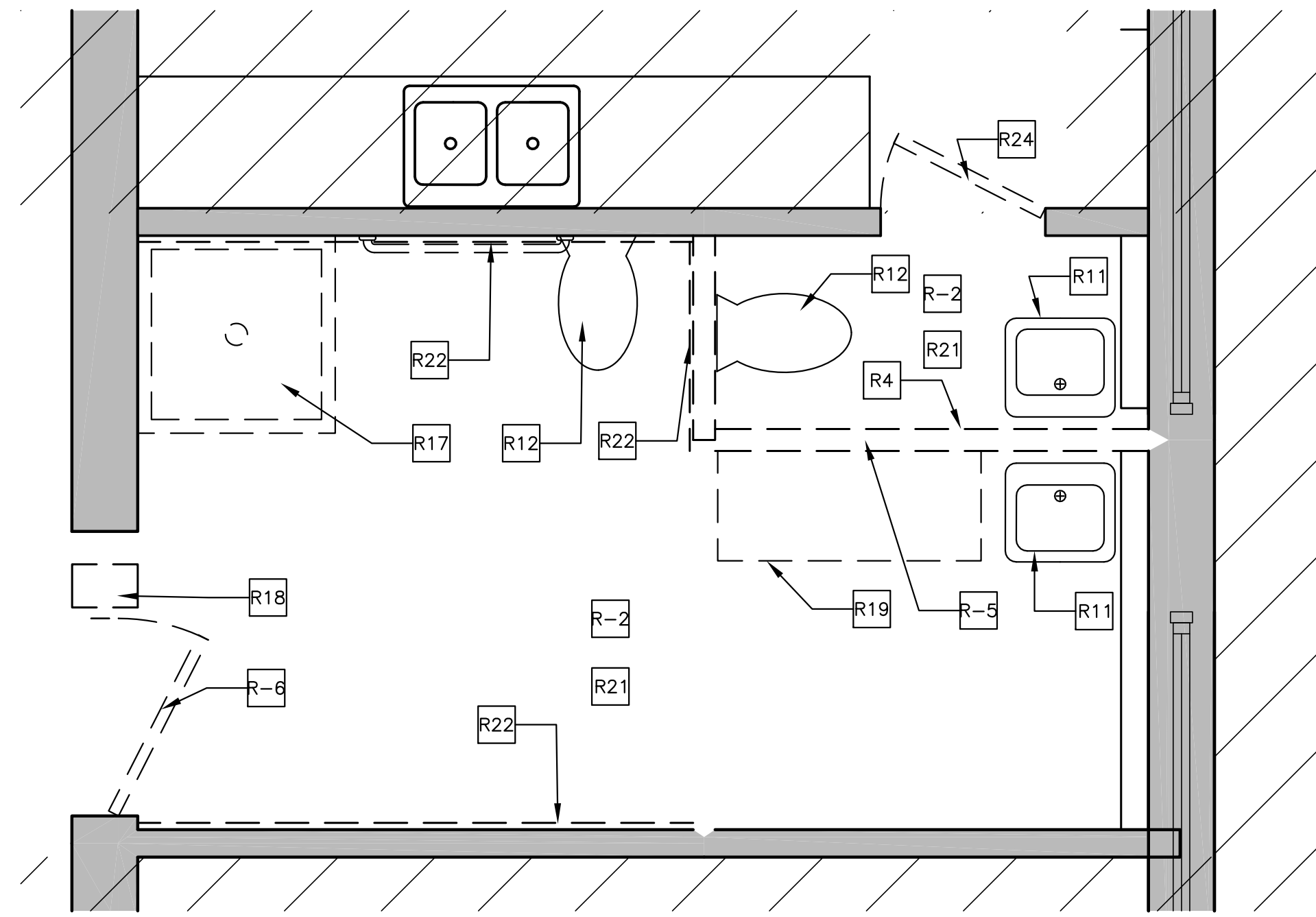
13 INTERIOR ELEVATION - TOILET ROOM G160
1/2" = 1'-0"



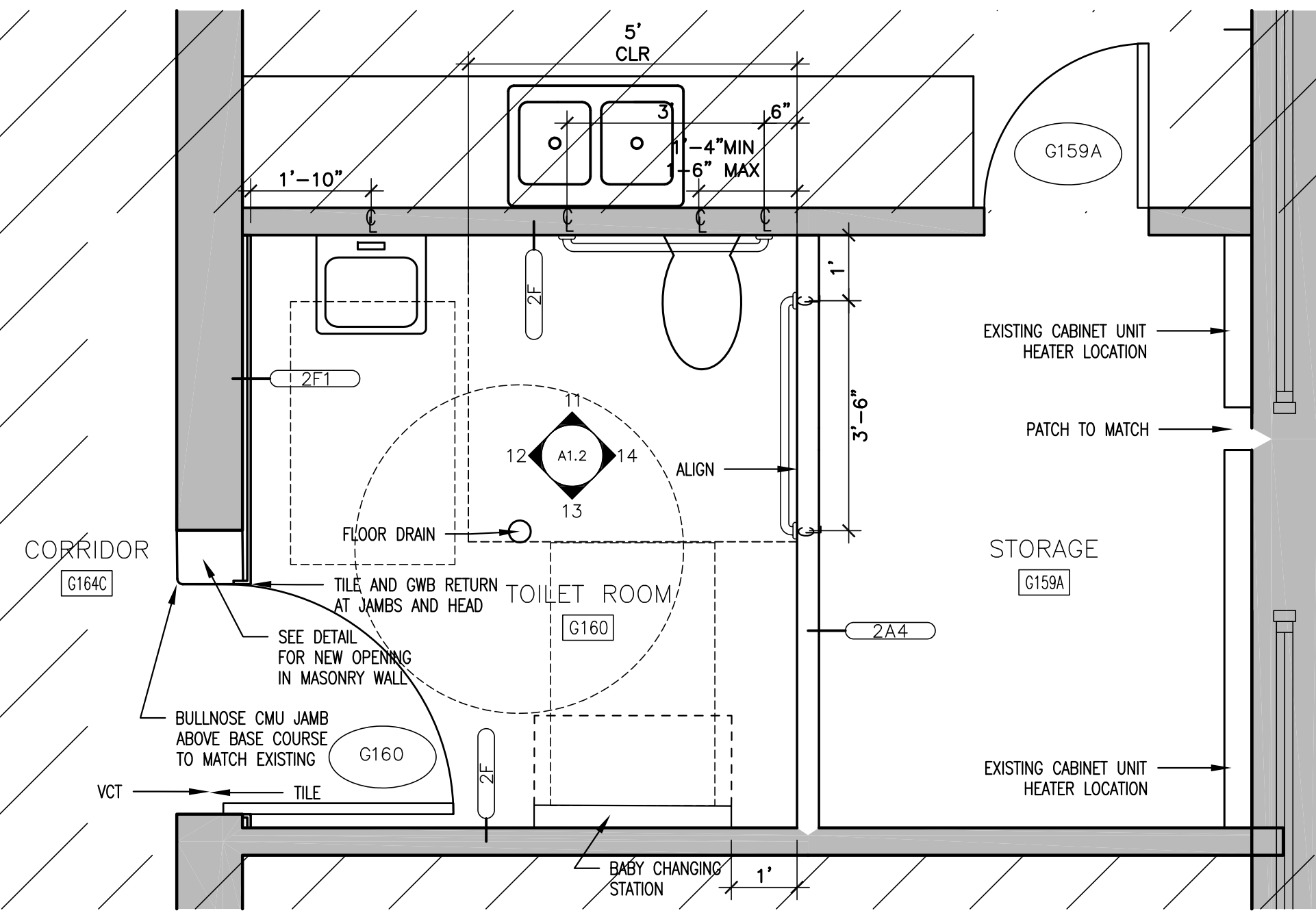
14 INTERIOR ELEVATION - TOILET ROOM G160
1/2" = 1'-0"

- DEMOLITION KEY NOTES:**
- R-1 REMOVE GYPSUM WALL BOARD COMPLETE, 1 SIDE, INCLUDING RESILIENT BASE AND MISC. WALL MOUNTED ITEMS.
 - R-2 REMOVE CEILING, GRID, HANGERS AND ALL ASSOCIATED ITEMS, INCLUDING LIGHT FIXTURES AND DIFFUSERS.
 - R-3 REMOVE CARPET AND ADHESIVE TO SLAB BELOW.
 - R-4 REMOVE WALL MOUNTED ITEMS, INCLUDING BUT NOT LIMITED TO SOAP DISPENSER, PAPER TOWELS, TOILET PAPER DISPENSER, MIRRORS, BABY CHANGING STATION, COAT HOOKS, SHELVING, CORNER GUARDS.
 - R-5 REMOVE WALL AS REQUIRED FOR NEW DOOR FRAME.
 - R-6 REMOVE DOOR AND FRAME. SALVAGE FOR OWNER.
 - R-7 REMOVE SHELVES AND STANDARDS
 - R-8 NOT USED.
 - R-9 REMOVE SECTION OF WALL FOR NEW DOOR OPENING.
 - R-10 REMOVE WALL MOUNTED HAND RAIL; SALVAGE FOR REINSTALLATION
 - R-11 REMOVE SINK AND FAUCET
 - R-12 REMOVE TOILET OR URINAL
 - R-13 REMOVE ELECTRIC BASEBOARD HEATER
 - R-14 REMOVE CERAMIC WALL TILE, PLASTER WALL FINISH, LATH, AND ALL ASSOCIATED MATERIALS.
 - R-15 REMOVE CERAMIC FLOOR TILE AND GROUT TO SLAB BELOW.
 - R-16 REMOVE TOILET PARTITIONS, DOORS, HARDWARE, AND ASSOCIATED ITEMS
 - R-17 REMOVE SHOWER AND ALL ASSOCIATED ITEMS
 - R-18 REMOVE SECTION OF CMU WALL FOR NEW DOOR OPENING.
 - R-19 REMOVE COUNTER AND SUPPORTS
 - R-20 REMOVE DISPLAY CASE. SALVAGE FOR OWNER.
 - R-21 REMOVE VCT FLOOR AND ADHESIVE TO SLAB BELOW
 - R-22 REMOVE PLASTER, LATH AND ASSOCIATED ITEMS TO THE FRAMING. PARTIAL HEIGHT REMOVAL AS REQUIRED FOR NEW TILE BACKER.
 - R-23 REMOVE AND RELOCATE HORN/STROBE
 - R-24 REMOVE DOOR SLAB. EXISTING FRAME TO REMAIN.

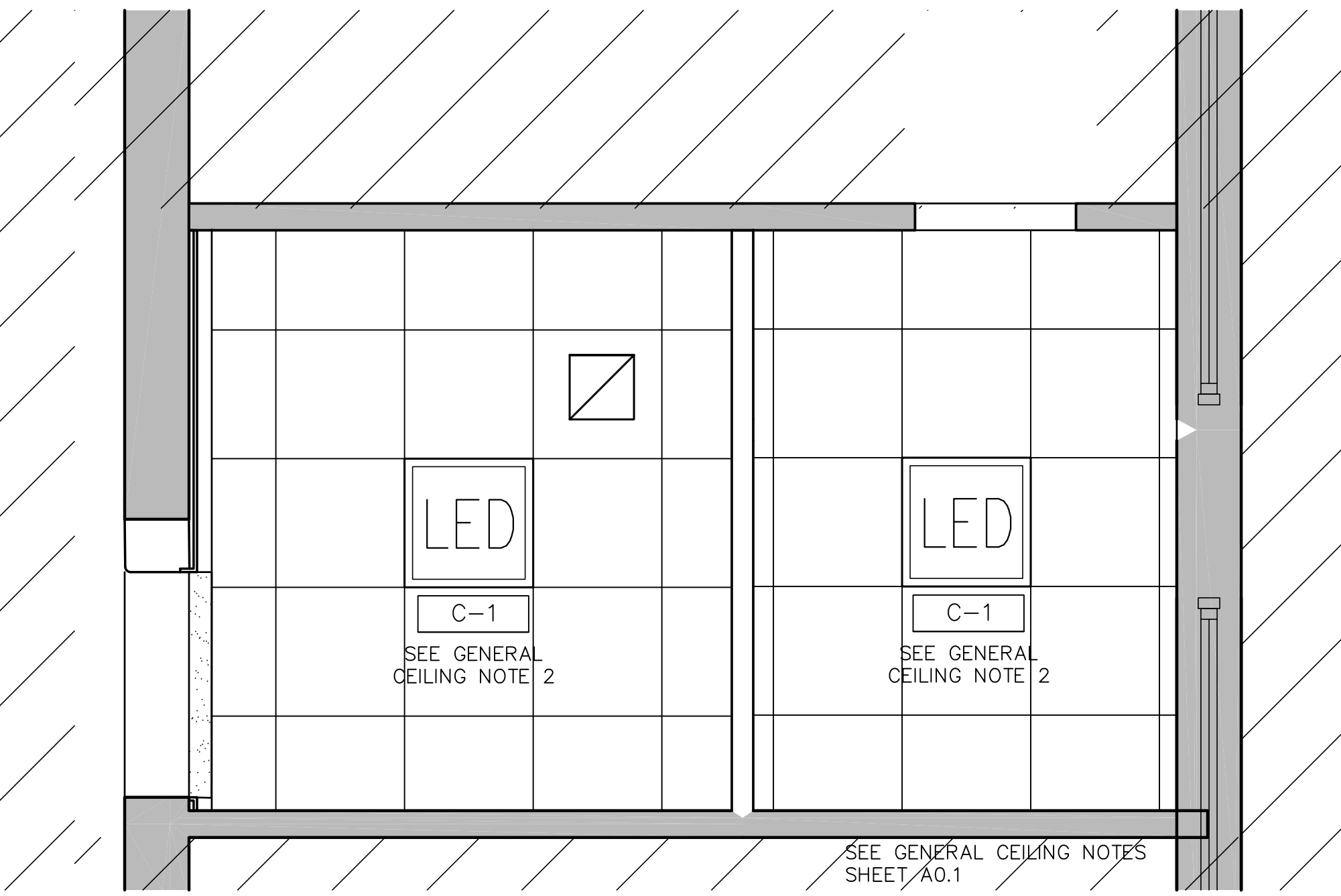
NOTE: BEFORE COMMENCEMENT OF DEMOLITION, DETERMINE ITEMS FOR SALVAGE WITH OWNER.



8 DEMOLITION PLAN - TOILET ROOM G160
1/2" = 1'-0"

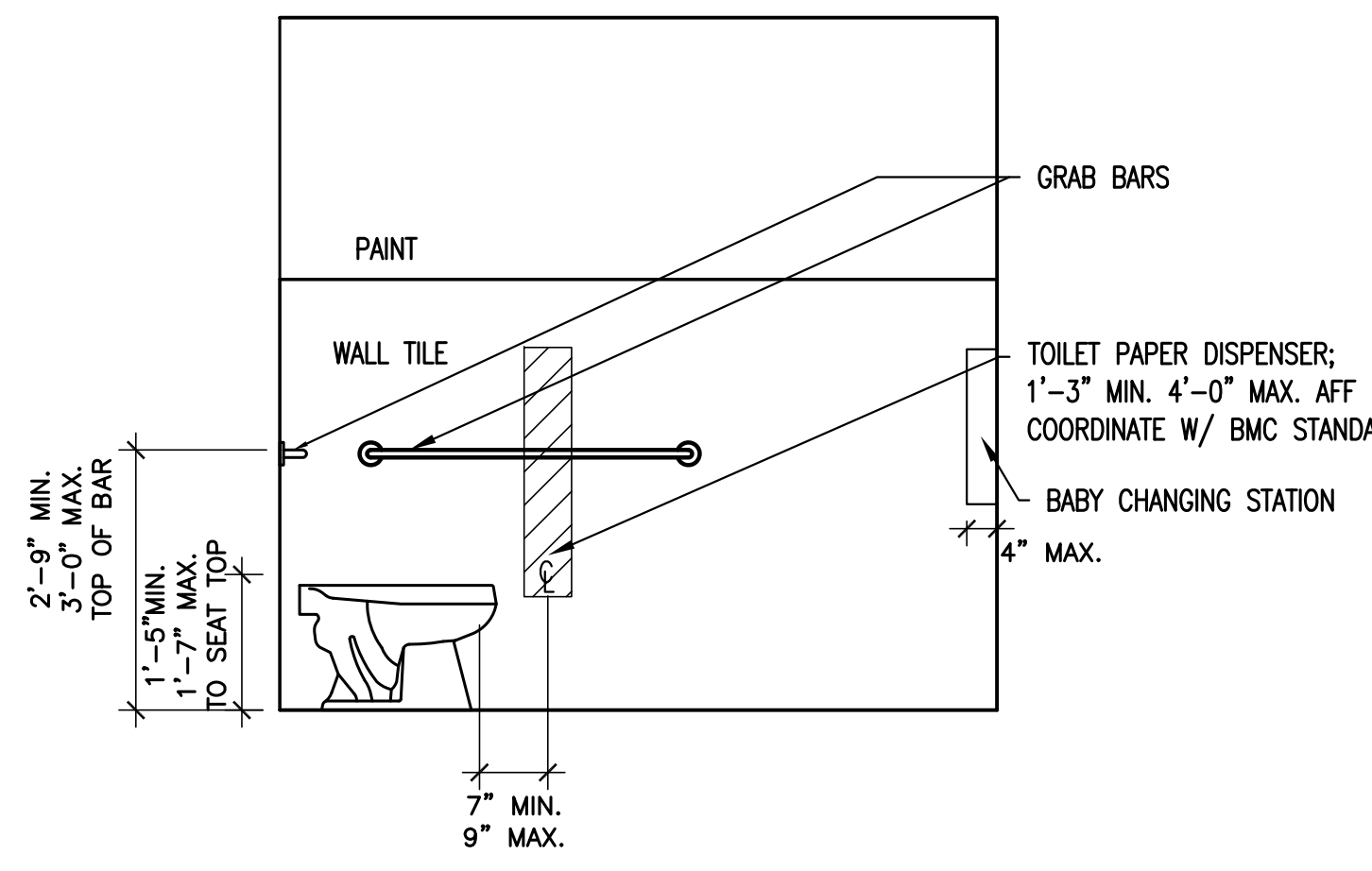


9 FLOOR PLAN - TOILET ROOM G160
1/2" = 1'-0"

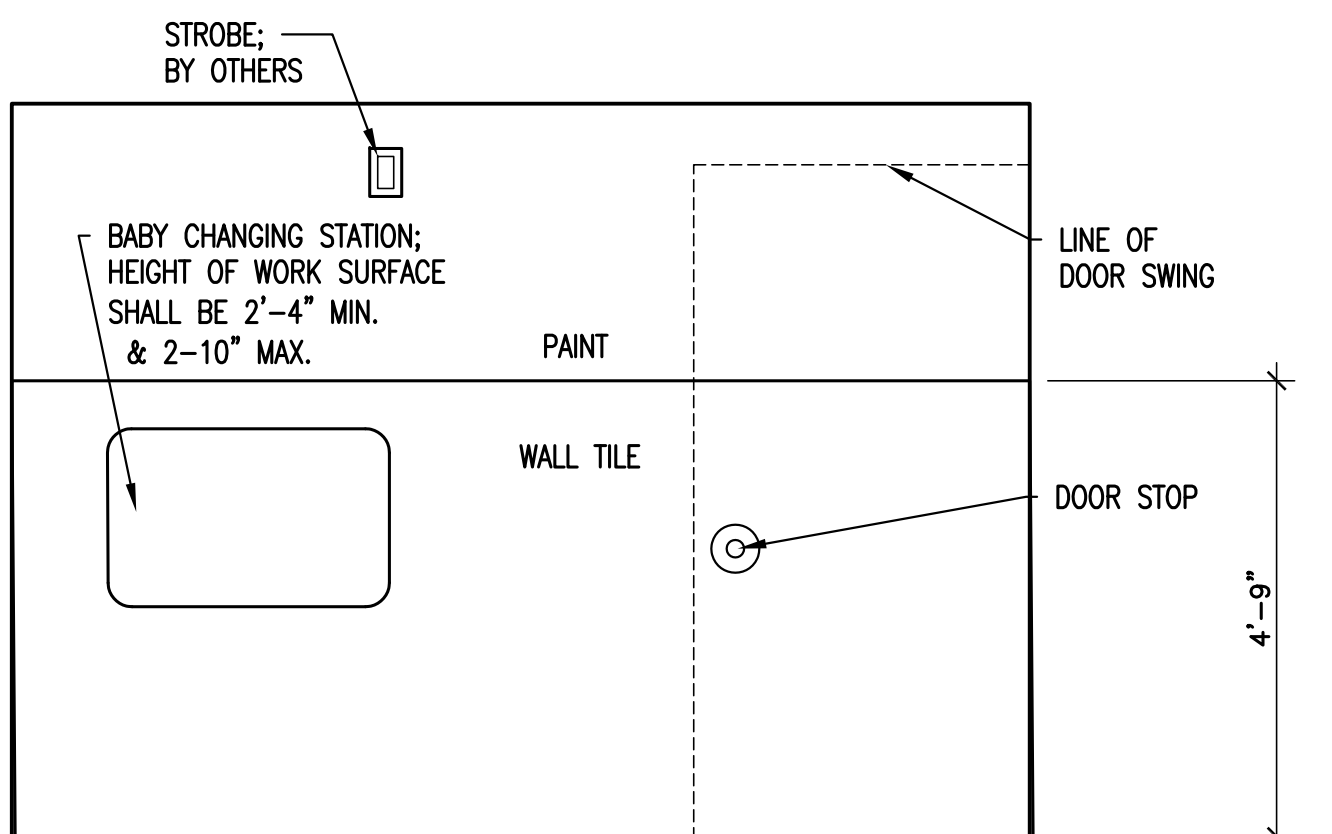


10 CEILING PLAN - TOILET ROOM G160
1/2" = 1'-0"

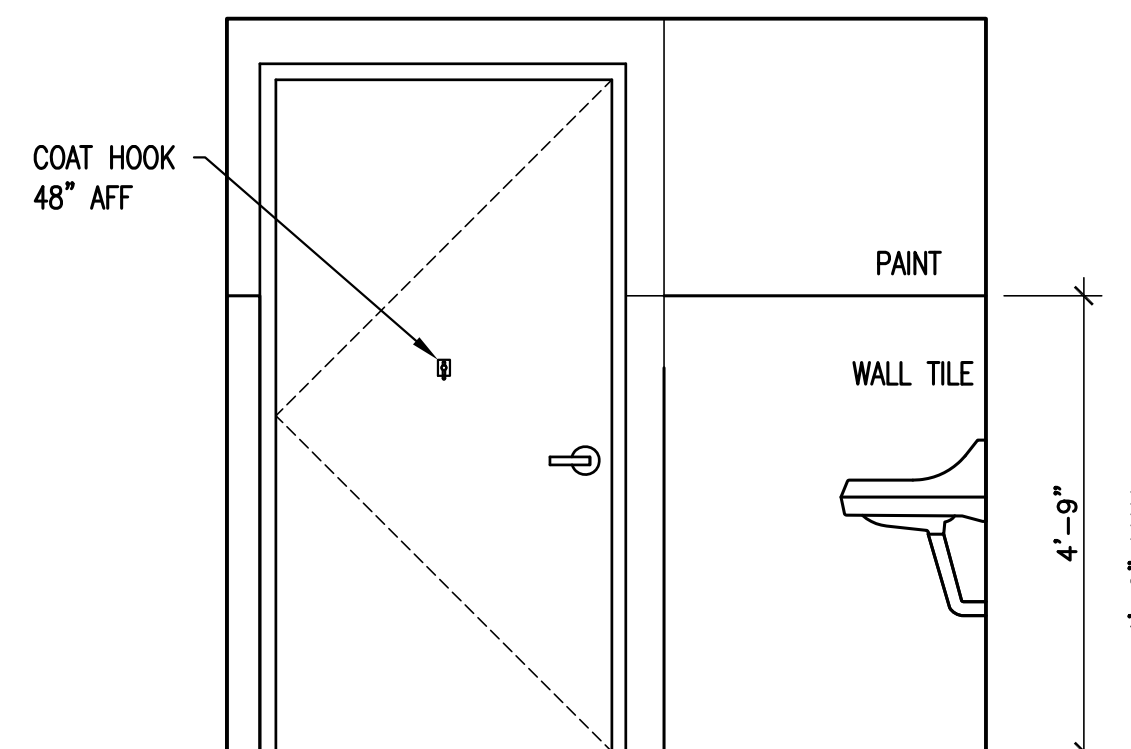
*NOTE:
SEE DETAIL 4, SHEET A2.0 FOR TYPICAL WALL TILE LAYOUTS



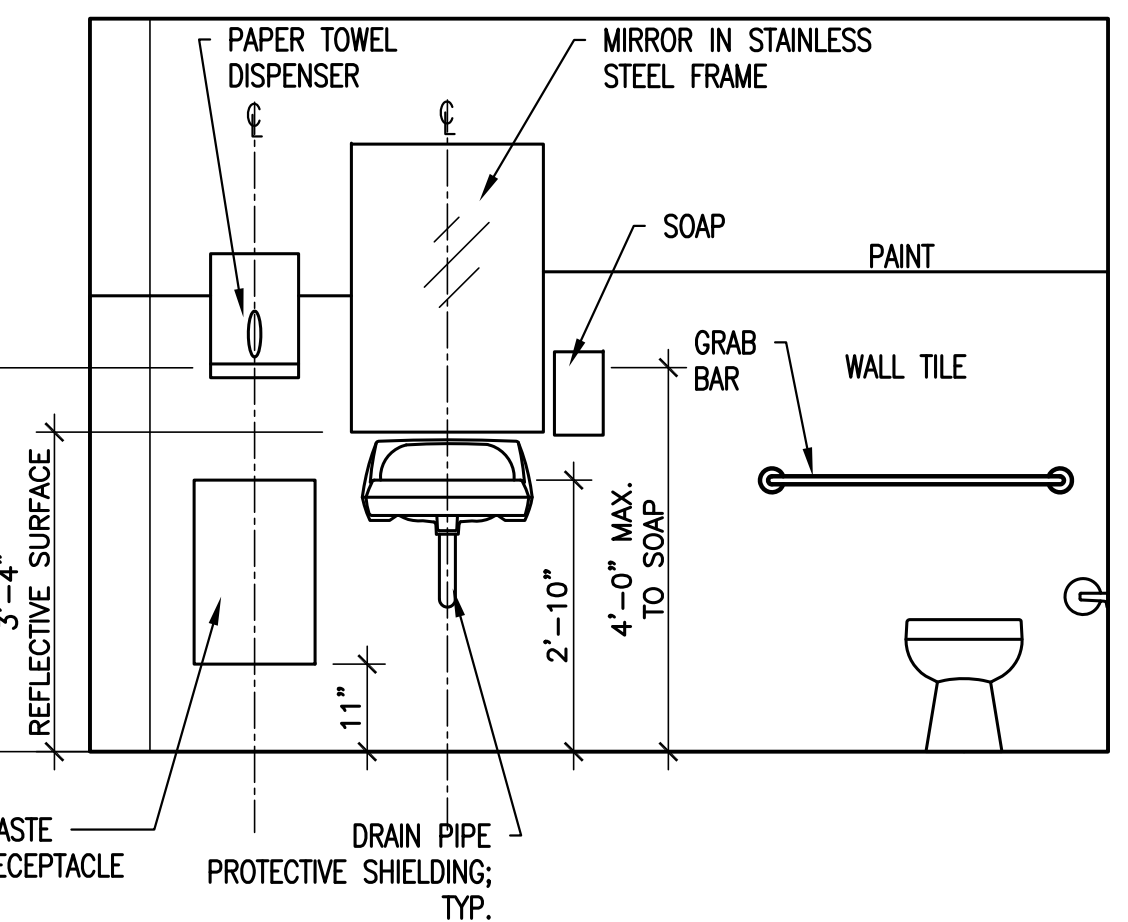
4 INTERIOR ELEVATION - TOILET ROOM 2098
1/2" = 1'-0"



5 INTERIOR ELEVATION - TOILET ROOM 2098
1/2" = 1'-0"

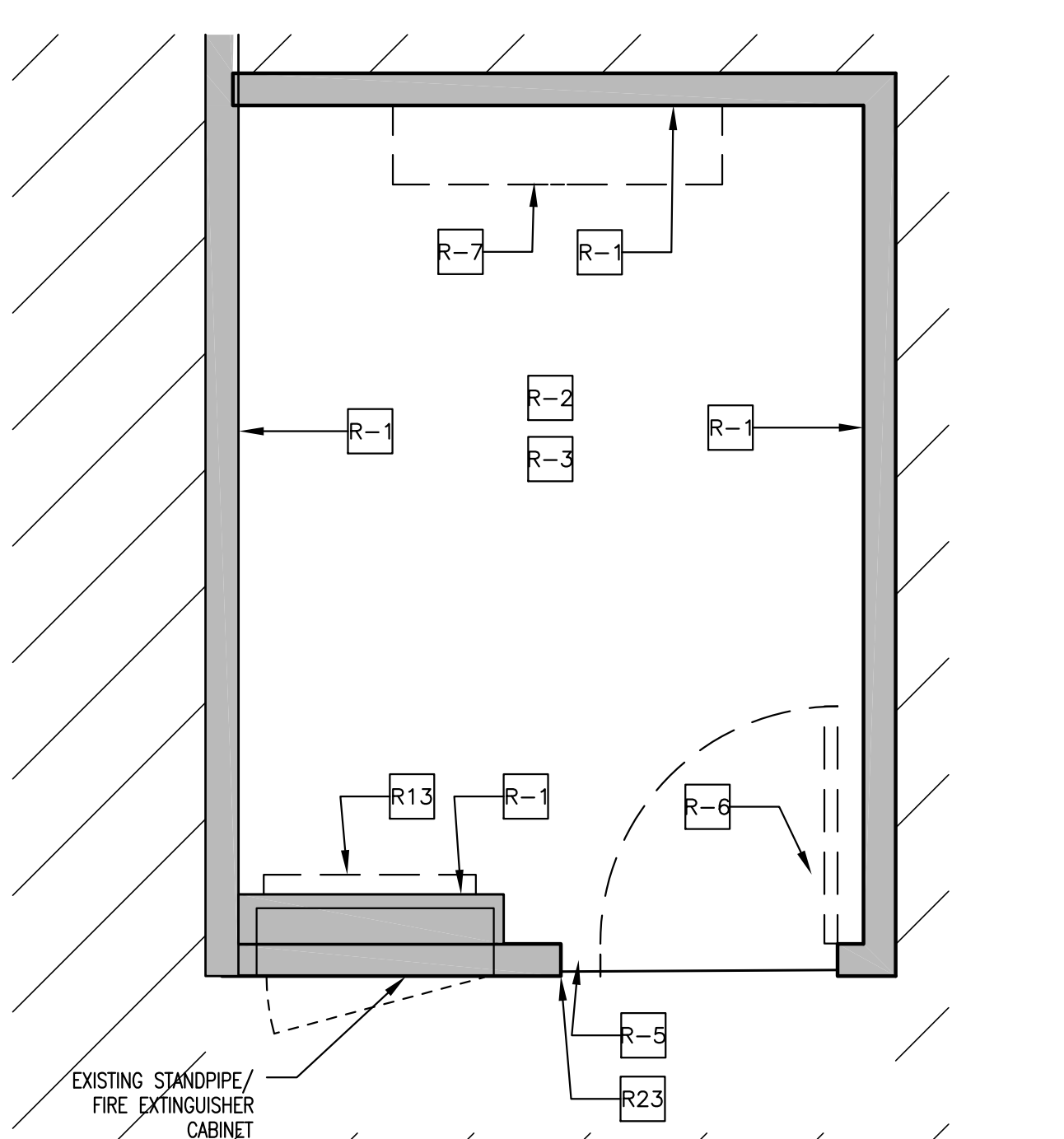


6 INTERIOR ELEVATION - TOILET ROOM 2098
1/2" = 1'-0"

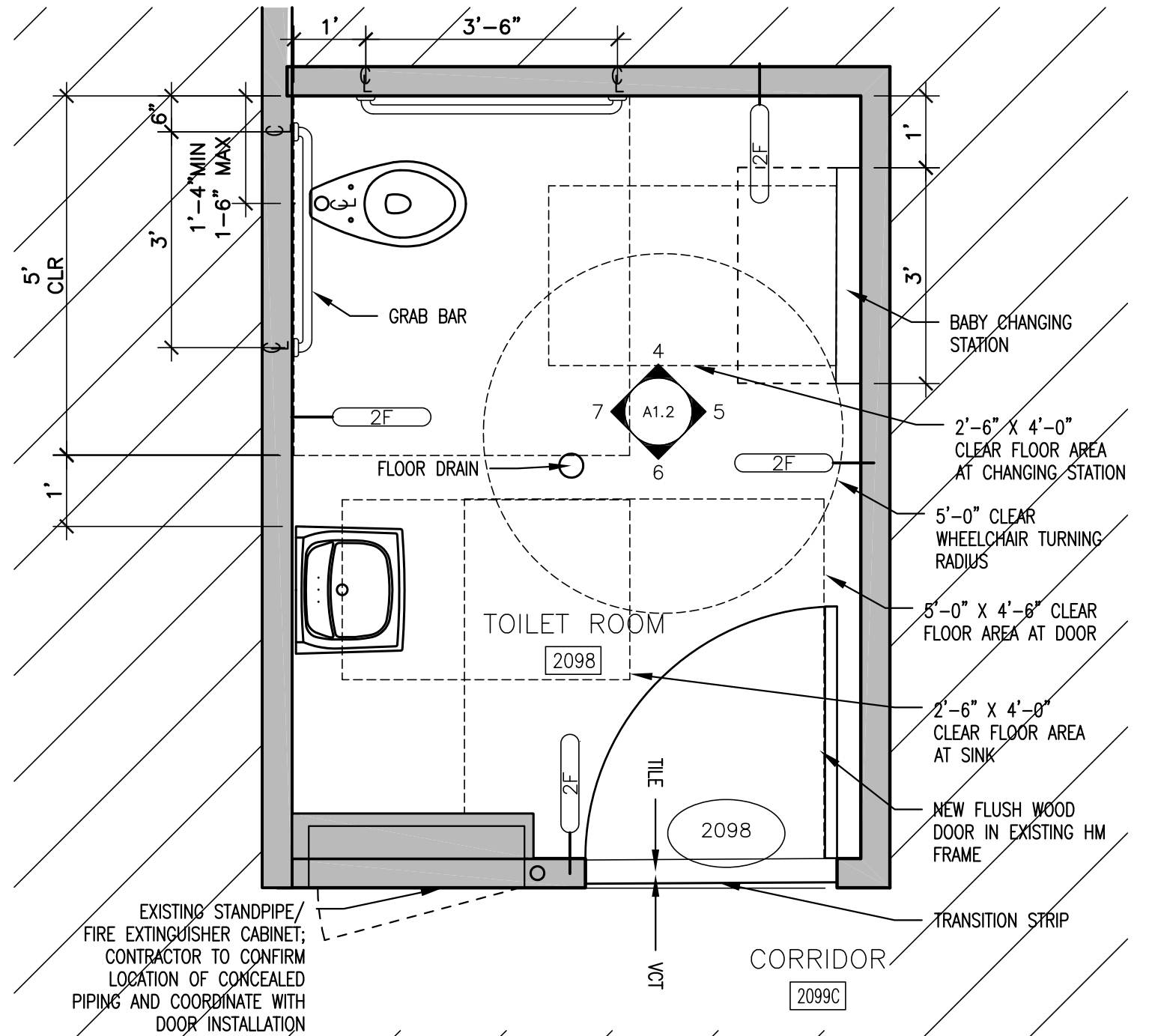


7 INTERIOR ELEVATION - TOILET ROOM 2098
1/2" = 1'-0"

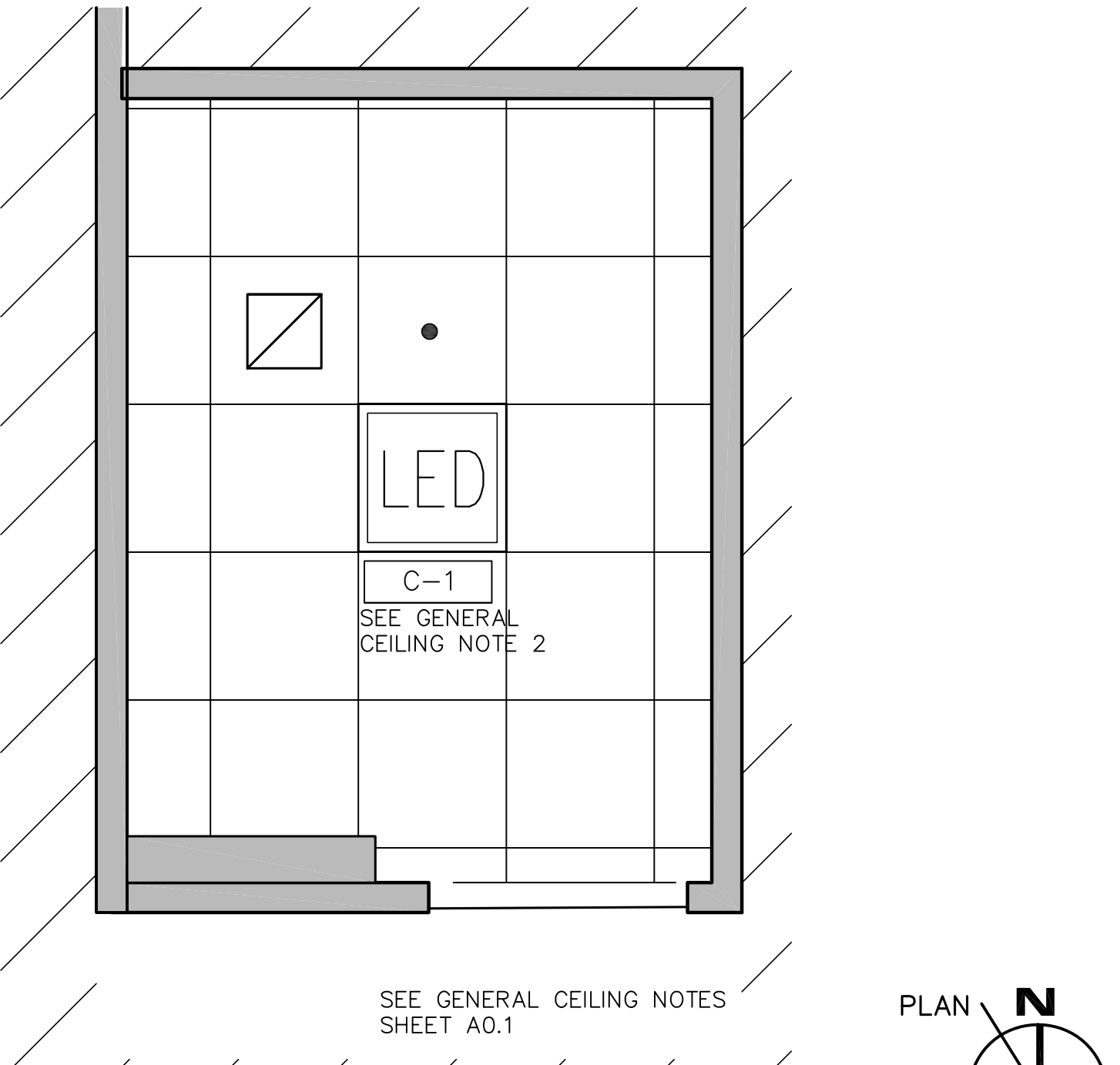
- DEMOLITION GRAPHIC LEGEND:**
- AREA OUTSIDE OF SCOPE OF WORK
 - EXISTING WALLS TO REMAIN
 - EXISTING WALLS TO BE DEMOLISHED
 - EXISTING MISC. ITEM TO BE REMOVED (SEE DEMOLITION KEY NOTES)
 - EXISTING DOOR TO BE REMOVED



1 DEMOLITION PLAN - TOILET ROOM 2098
1/2" = 1'-0"



2 FLOOR PLAN - TOILET ROOM 2098
1/2" = 1'-0"



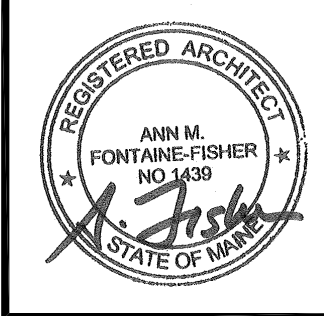
3 CEILING PLAN - TOILET ROOM 2098
1/2" = 1'-0"



49 DARTMOUTH STREET
PORTLAND, MAINE 04101
207-775-1059
www.pdtarch.com

COPYRIGHT 2014
PDT Architects
Reuse or reproduction of the
contents of this document is not
permitted without written
permission of PDT Architects.

MMC - BRIGHTON CAMPUS
2014 TOILET ROOM RENOVATIONS
335 BRIGHTON AVENUE, PORTLAND, MAINE 04102



JOB NO.
14132

DRWN. CHK
AJK AFF

SCALE:
AS NOTED

ISSUE
PERMIT SET
12-11-2014

TITLE
DEMOLITION PLAN
FLOOR PLAN,
REFLECTED
CEILING PLAN,
INTERIOR ELEV.

SHEET

A1.2