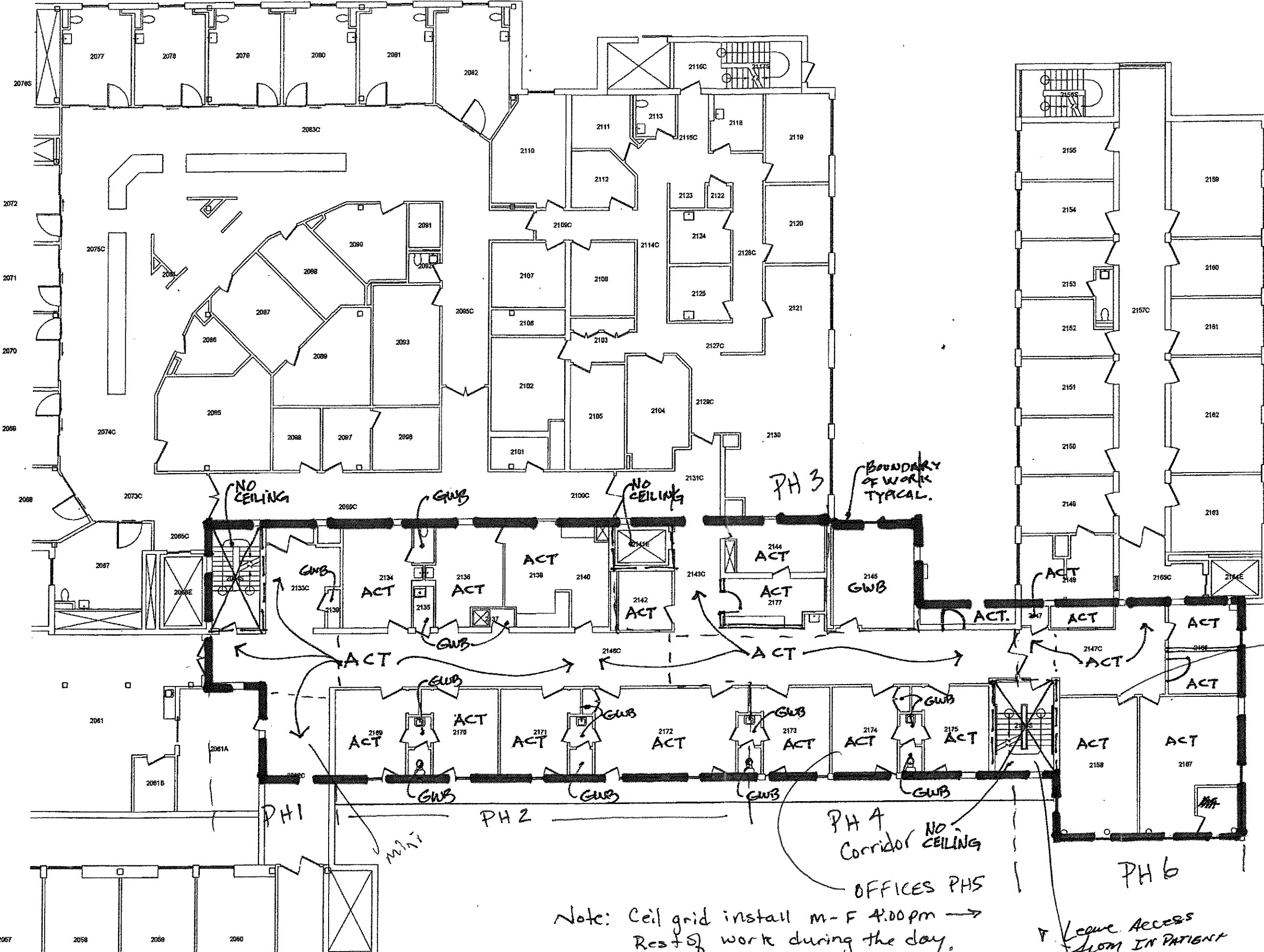


These notes do not apply
3/25/13



~~ACT = ACOUSTICAL
CEILING TILE CEILING
SYSTEM TO BE REMOVED
AND REPLACED WITH
NEW SYSTEM EQUAL TO
U.L. CEILING ASSEMBLY
G217.
ACT CEILING SYSTEM
REMOVAL BY OTHERS.~~

~~GWB = GYPSUM WALL
BOARD CEILING SYSTEM
TO BE REMOVED AND
REPLACED WITH NEW
SYSTEM EQUAL TO
U.L. CEILING ASSEMBLY
G527.
GWB CEILING SYSTEM
REMOVAL BY OTHERS.
NEW GWB SHALL BE
5/8" TYPE X.~~

Corridor walks
need to continue to
deck above

2ND FLOOR
BRIGHTEN CAMPUS
MMC
BRIGHTON BUILDING
CEILING REPAIRS
APRIL 2010

Note: Ceil grid install m-f 4:00pm →
Rest of work during the day.

Leave Access
from IN PATIENT