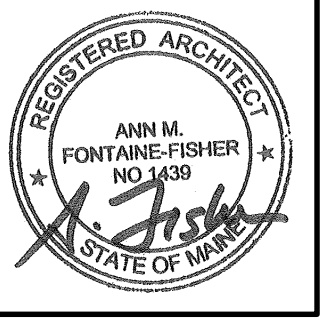


# Maine Medical Partners Orthopedic Trauma & Fracture Care

335 Brighton Avenue, Suite 200  
Portland, Maine



JOB NO.  
12-110

DRWN: CHK  
JKP AFF

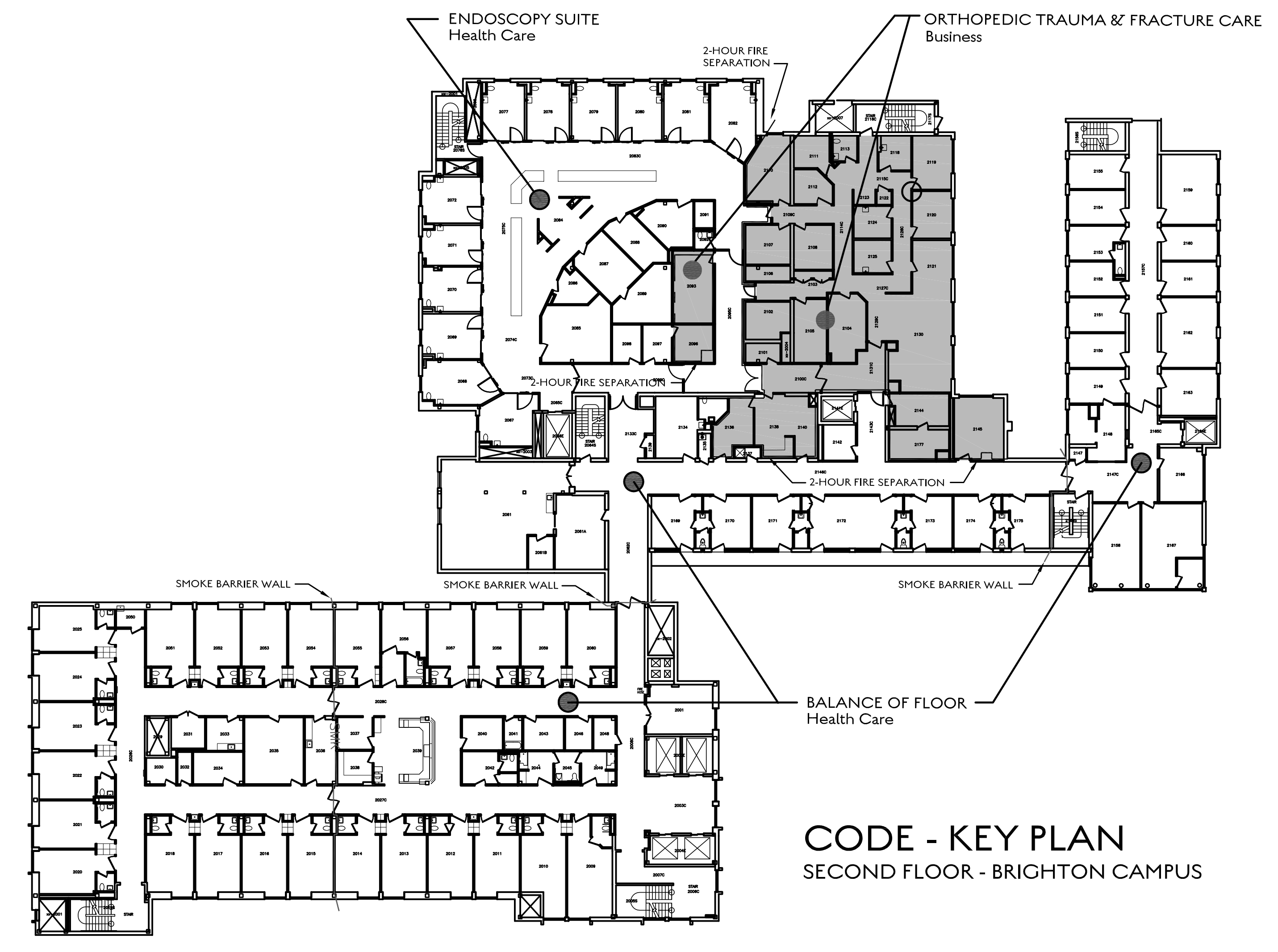
SCALE:  
N/A

ISSUE  
NOVEMBER 26, 2012  
REISSUED:  
JANUARY 15, 2014

TITLE  
TITLE SHEET,  
ABBREVIATIONS  
& KEY/CODE PLAN

SHEET

T1.0



CODE - KEY PLAN  
SECOND FLOOR - BRIGHTON CAMPUS

## LIST OF DRAWINGS

ARCHITECTURAL DRAWINGS:

T1.0	TITLE SHEET, ABBREVIATIONS & KEY/CODE PLAN
D1.0	DEMOLITION PLAN, LEGEND & NOTES
A1.0	FLOOR PLANS, WALL TYPES, NOTES & LEGEND
A2.0	RCP, F & E PLAN, DETAILS, NOTES & LEGEND
A7.0	FINISH SCHEDULE, MATERIALS LEGEND, DOORS & HARDWARE, AND OUTLINE SPECIFICATION
A8.0	INTERIOR ELEVATIONS
A8.1	CASEWORK SECTIONS, & DETAILS

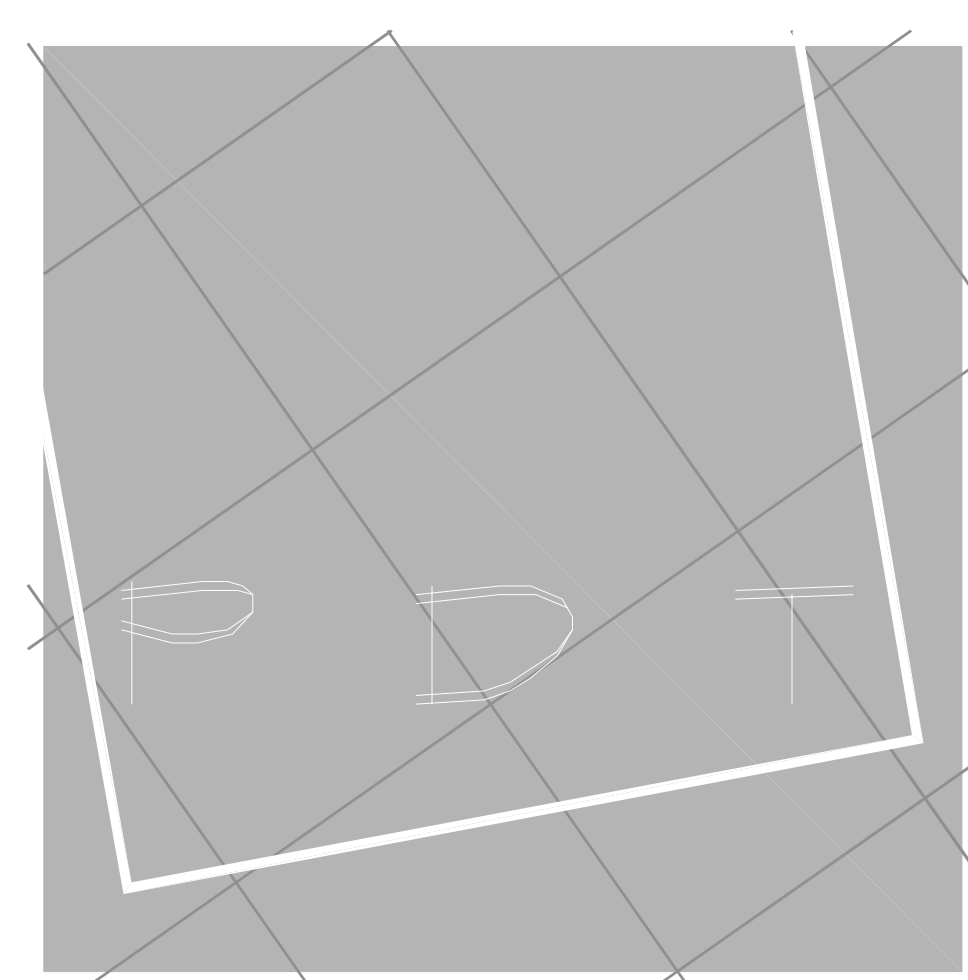
## ABBREVIATIONS

ADJ	ADJUSTABLE	MFR	MANUFACTURER
AFF	ABOVE FINISH FLOOR	MAX	MAXIMUM
BLDG	BUILDING	MTL	METAL
BO	BOTTOM OF	MIN	MINIMUM
CC	CUBICLE CURTAIN	MISC	MISCELLANEOUS
CFMF	COLD FORMED METAL FRAMING	MR	MOISTURE RESISTANT
CG	CORNER GUARD	NIC	NOT IN CONTRACT
CJ	CONTROL JOINT	OC	ON CENTER
CLG	CEILING	PT	PRESSURE TREATED
CL	CENTER LINE	R, RAD	RADIUS
CL	CLOSET	RB	RESILIENT BASE
COL	COLUMN	REF	REFRIGERATOR
CONC	CONCRETE	REQD	REQUIRED
CONST	CONSTRUCTION	REV	REVISION
CONT	CONTINUOUS	RO	ROUGH OPENING
CR	CHAIR RAIL	SAT	SUSPENDED ACOUSTICAL
DIA	DIAMETER	SIM	CEILING TILE
DIM	DIMENSION	SFRM	CEILING TILE
DW	DISHWASHER	SFRM	SPRAY-APPLIED FIRE RESISTANT MATERIAL
DWG	DRAWING	SPEC	SPECIFICATION
EJ	EXPANSION JOINT	SQ	SQUARE
ELEV	ELEVATION	SS	STAINLESS STEEL
EXIST	EXISTING	STL	STEEL
EXT	EXTERIOR	STD	STANDARD
FD	FLOOR DRAIN	STRUCT	STRUCTURAL
FBO	FURNISHED BY OWNER	SV	SHEET VINYL
FDN	FOUNDATION	TO	TOP OF
FT	FEET	TYP	TYPICAL
GA	GAUGE	UNO	UNLESS NOTED OTHERWISE
GC	GENERAL CONTRACTOR	VERT	VERTICAL
GL	GLASS	VIF	VERIFY IN FIELD
GWB	GYPSONUM WALL BOARD	W/	WITH
HR	HAND RAIL	WB	WALL BUMPER
HM	HOLLOW METAL	W/O	WITHOUT
H, HGT	HEIGHT	WD	WOOD
HOR	HORIZONTAL	WP	WALL PROTECTION
INSUL	INSULATION		
MECH	MECHANICAL		
MED	MEDIUM		

NOTE: REFER TO MATERIALS LEGEND FOR ADDITIONAL FINISH ABBREVIATIONS

## CODE SUMMARY

APPLICABLE CODES & GUIDELINES							
Building Code:	IBC 2009 (per MUBEC)						
Life Safety Code:	NFPA 101 - 2009						
Guidelines:	Guidelines for Design & Construction of Healthcare Facilities 2006						
FIRE PROTECTION Supervised - Automatic Sprinkler System							
BUSINESS (B) Existing				HEALTHCARE (I-2) Existing			
	IBC	NFPA		IBC	NFPA		
OCCUPANCY LOAD	Table 1004.1.1 100 sf/person	Table 7.3.1.2 100 sf/person		Table 1004.1.1 100 sf/person (outpatient areas)	Table 7.3.1.2 Inpatient Treatment: 240 sf/person Sleeping: 120 sf/person Ambulatory HC: 100 sf/person		
SEPARATION OF OCCUPANCIES		Table 6.1.14.4.1 Separation between business and healthcare occupancies is 2 hours			Table 6.1.14.4.1 Separation between business and healthcare occupancies is 2 hours Suites more than 2,500 sf shall have not less than two exits access doors remotely located from each other		
NON-SLEEPING SUITES	NA	NA			19.2.5.7.3		
CONSTRUCTION CLASSIFICATION	602.2 Type 1B		Type 1 (332)	602.2 Type 1B		Type 1 (332)	
NUMBER OF EXITS	Table 1021.1 2 Exits for occupant load of 500 or less	39.2.4.1 Not less than two separate exits shall be accessible from every part of every story		Table 1021.1 2 Exits for occupant load of 500 or less	19.2.4.2 19.2.4.3 Not less than 2 exits shall be accessible from every part of every story or from each smoke compartment		
TRAVEL DISTANCE TO EXITS	1016.1 Max. 300' w/ sprinkler	39.2.6.3 Max. 300' w/ supervised sprinkler system		1016.1 Max. 200' w/ sprinkler	19.2.6.2.2 Travel distance between any room door required as an exit access and an exit shall not exceed 200 ft. w/ sprinkler system		
REMOVEDNESS OF EXITS		7.5.1.3.2 Distance between exits not less than 1/2 length of max. overall diagonal dimension.			7.5.1.3.2 Distance between exits not less than 1/2 length of max. overall diagonal dimension.		
COMMON PATH OF TRAVEL	1014.3 Max. 100'	39.2.5.3.1 Max. 300' w/ sprinkler		1014.3 75 ft.	19.2.5.7.3.4 100' - One intervening room 50' - Two intervening rooms		
DEAD END LIMIT	1018.4 50 ft.	39.2.5.2 50 ft.		1018.4 20 ft.	19.2.5.2 30 ft.		
CORRIDORS	Table 1018.1 No fire rating required w/ sprinkler system	39.3.6 No requirement		Table 1018.1 No fire rating required w/ sprinkler system	19.3.6.2.4 Within smoke compartments, non-rated corridors permitted.		
HAZARDOUS AREA PROTECTION		39.3.2.2 High hazard areas shall be separated. 1-hour separation; closer; 3/4 hour min. door; sprinkler			19.2.3.4(1) Non-patient corridors: Min. 44" cir		
					Table 18.3.2.1 Storage rms. Larger than 100 sf - 1 Hr. separation; 50-100sf - door closer		



## ARCHITECTURE INTERIOR DESIGN PLANNING

49 DARTMOUTH STREET  
PORTLAND, ME 04101  
207 775-1059  
207 775-2694 FAX  
www.pdtarchs.com

Issued: November 26, 2012  
Reissued: January 15, 2014

