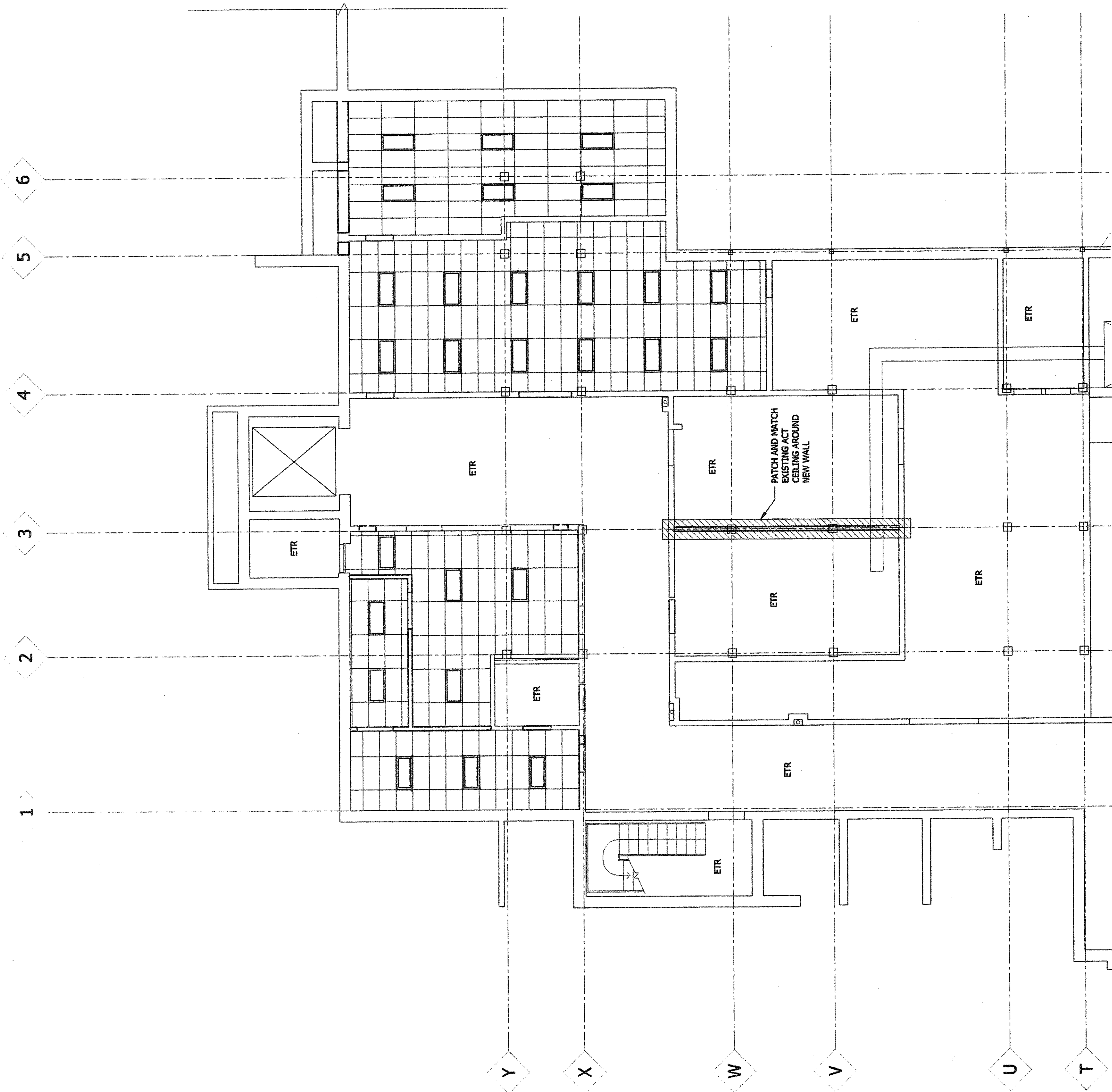


**RCP GENERAL NOTES**

- ALL SOFFITS TO BE 7'-6" ABOVE FINISHED FLOOR UNLESS OTHERWISE NOTED.
- REFER TO MEP / P DRAWINGS FOR MORE INFORMATION
- ALL CEILING HEIGHTS TO BE 8'-2" ABOVE FINISHED FLOOR UNLESS NOTED OTHERWISE.
- ALL CEILING AND SOFFIT ELEVATIONS INDICATED ARE FROM FINISH FLOOR ELEVATION.

**RCP LEGEND**

- ⊗ BOLT LIGHT CEILING MOUNTED
- ⊙ NURSE CALL DOME LIGHT
- ⊖ RECESSED STRIP LIGHT FIXTURE
- ⊓ WALL MOUNTED FIXTURE
- ⊔ UNDER CABINET LINEN LIGHT
- ⊕ CURTAIN TRACK CEILING MOUNTED
- ⊖ CEILING MOUNTED PORTABLE DOWN LIGHT
- ⊖ 2 X 2 APRIL
- ⊖ 2 X 4 APRIL
- ⊖ 2 X 4 APRIL CEILING FIXTURE
- ⊖ 2 X 2 RECESSED DIRECT/INDIRECT FIXTURE
- ⊖ 2 X 4 PARABOLIC FIXTURE
- ⊖ 2 X 2 RECESSED DOWN LIGHT
- ⊖ 6" RECESSED WALL WASHER
- ⊖ 2' X 4' MULTIFUNCTION PATIENT FIXTURE
- ⊖ RECESSED LINEAR FLUORESCENT
- ⊖ G.W.B. SOFFIT
- ⊖ DECORATIVE TRACK LIGHTING
- ⊖ SCENEZ / VARIETY
- ⊖ 12" PENDANT LIGHT
- ⊖ SWING ARM WALL LIGHT (CPOD)
- ⊖ CEILING ELEVATION (AFF)
- ⊖ PRE-FINISHED ACCESS PANEL
- ⊖ RADIANT HEAT PANEL
- ⊖ AC CEILING
- ⊖ STAIRWELL WALL BOARD CEILING

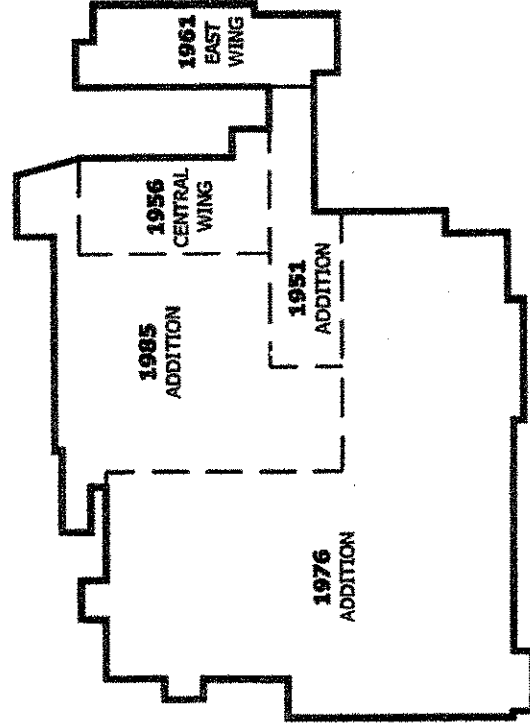


ISSUE:	LETTER:	DATE:	DESCRIPTION:
A	08/13/09	ISSUE FOR BID	

REVISION:	NO.:	DATE:	DESCRIPTION:

KEY PLAN:



DRAWING TITLE:  
**REFLECTED CEILING PLAN**

DRAWN BY:	AL	SEAL:
CHECKED BY:	DP	
SCALE:	1" = 1'-0"	
PROJECT NO.:	93274.00	

DRAWING NO.:

**A-300**