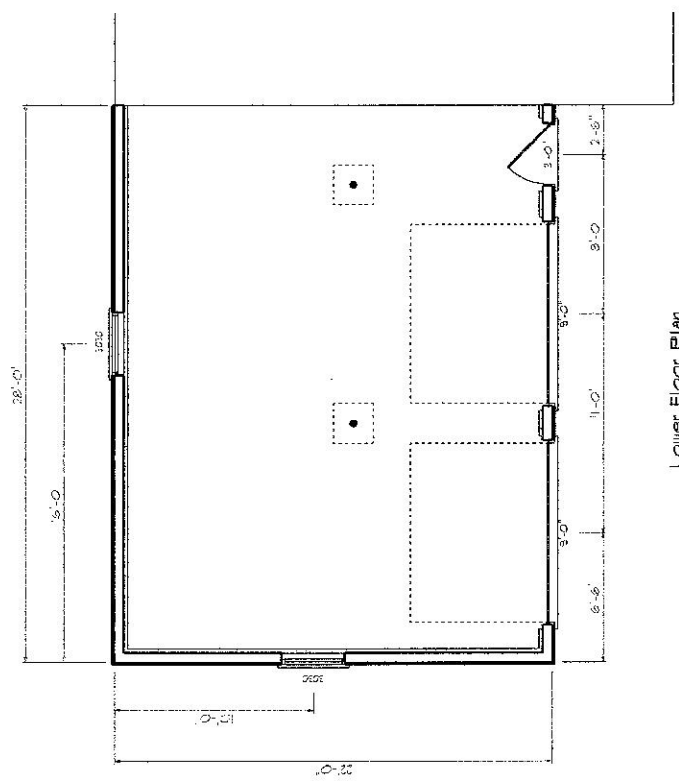


Upper Floor Plan  
1/4" = 1'-0"



Lower Floor Plan  
1/4" = 1'-0"

Never Guess to check Plans for compliance with all applicable codes.

GRAY'S  
Custom 20'x28' Addition

Plan For: **Joyce Johnson**

Drawn by: **Wayne Partridge**

2 / 2

Aug 10 2014

GRAY'S  
Building and Framing  
for over 20 years