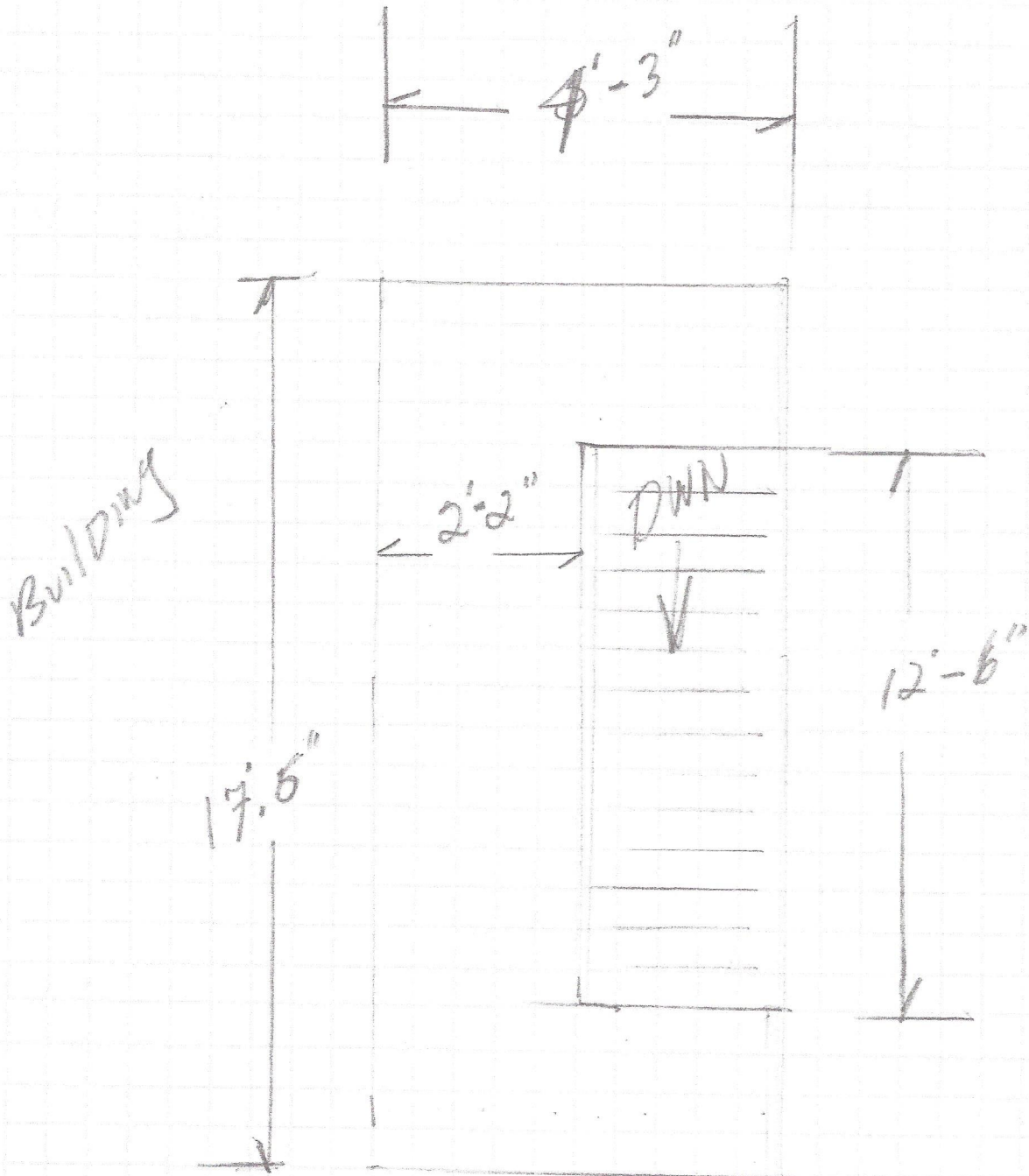
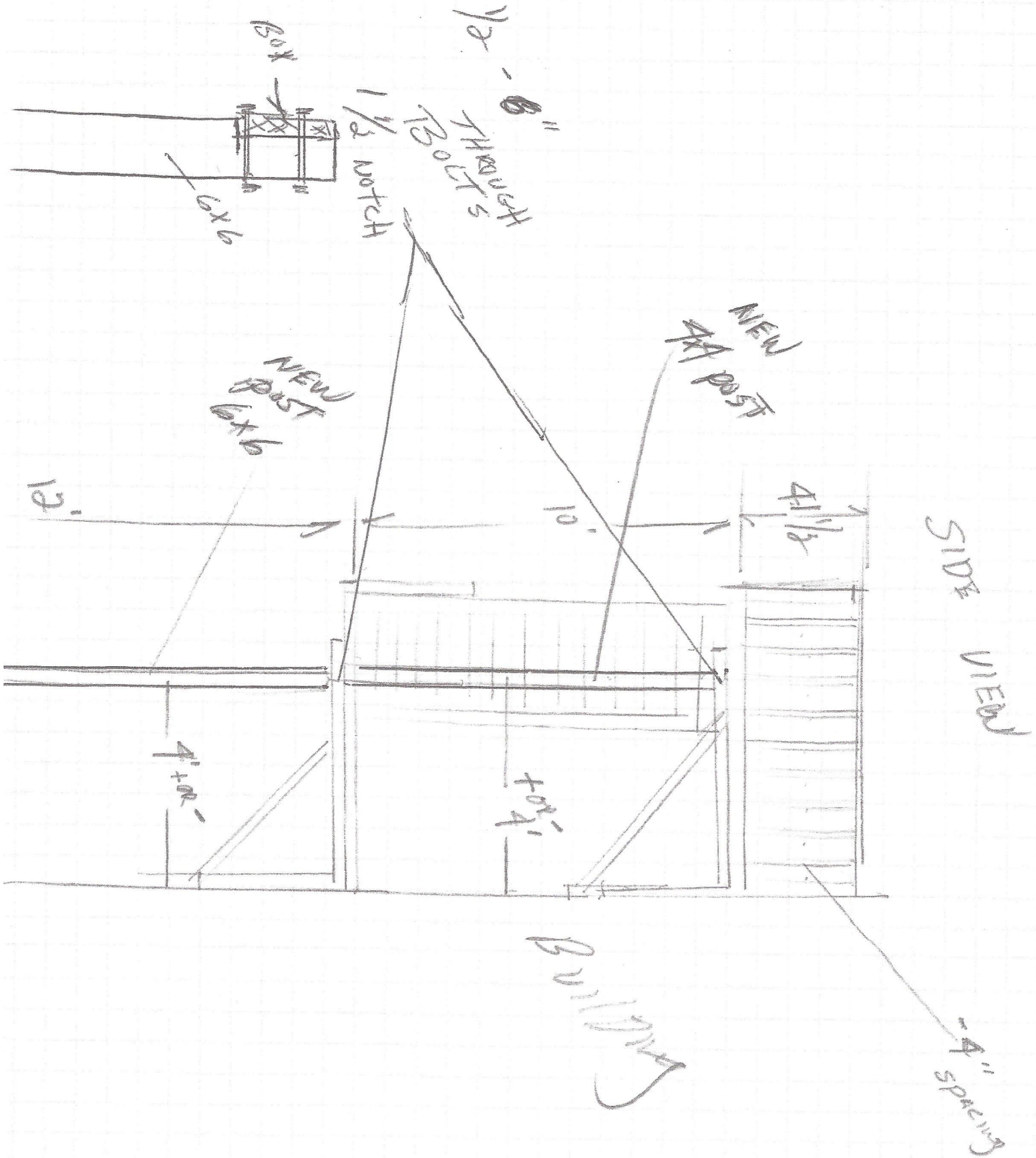
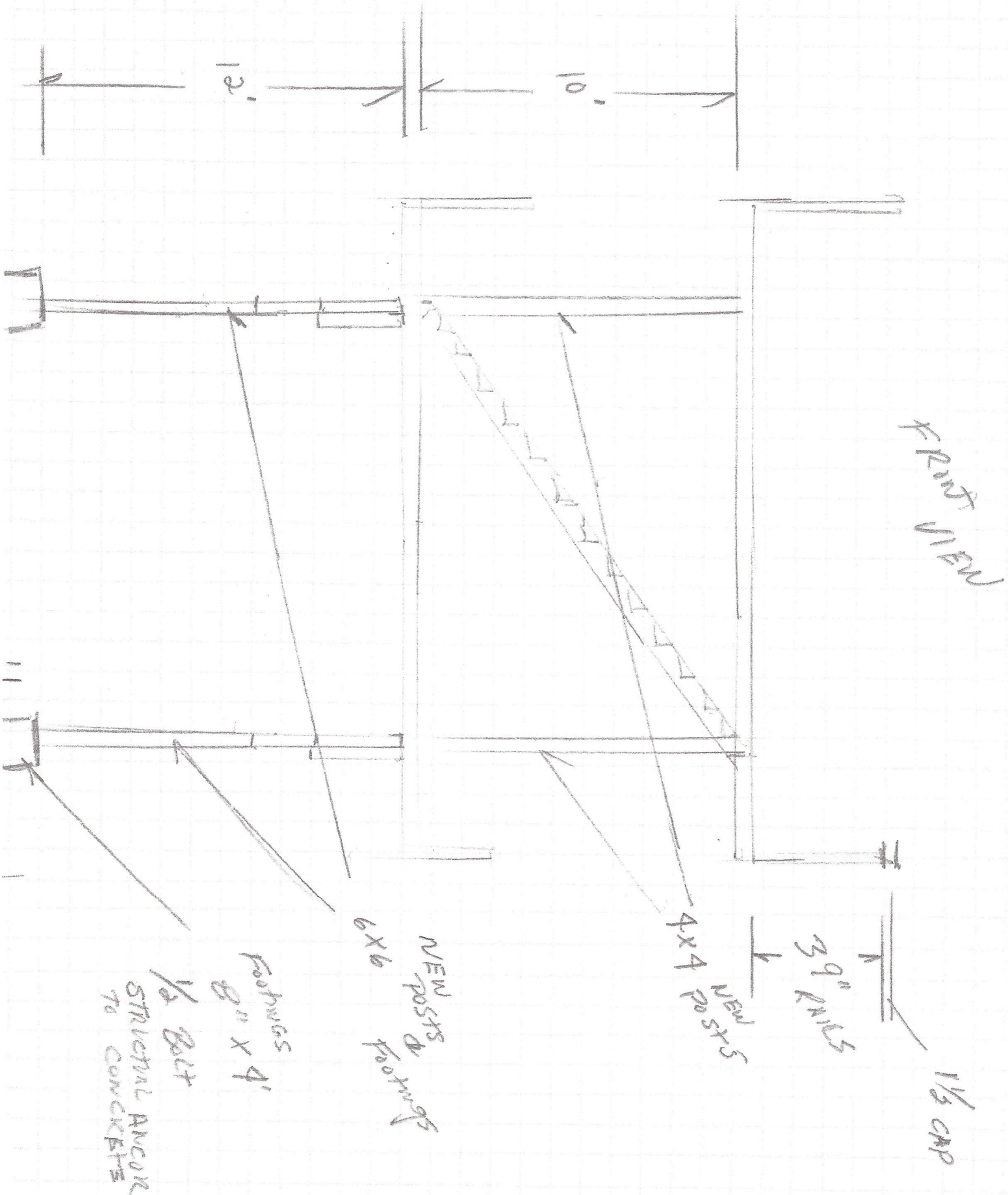


245 BRIGHTON AVE

TOP VIEW







FRONT VIEW

1/3 CAP

3/4" PILES

4x4 NEW POSTS

6x6 NEW POSTS & FOOTINGS

FOOTINGS 8" X 4'

1/2 BOLT STRUCTURAL ANCHOR TO CONCRETE

12'

10'

11'