

GRACE ICE AND WATER SHIELD UNDER ROOFING
ON LOWEST 3' MIN. OF ALL SLOPES
30-LB. ROOFING FELT ABOVE
R38 MINIMUM INSULATION BETWEEN RAFTERS
BLOCK BETWEEN RAFTERS WITH TUFFVENT ATTIC
RAFTER VENTS IF COLD ROOF

RAFTERS: NO. 2 2X12,16" OC

ROOF STRUCTURE ALTERNATIVE: PREFABRICATED CUSTOM
ROOF TRUSSES DESIGNED AND MANUFACTURED BY
MCLAUGHLIN ROOF TRUSSES LTD.

CONTINUOUS RIDGE VENT AND
CONTINUOUS EAVE VENT TYP.
UNLESS USING BLOWN-IN CELLULOSE "HOT ROOF"

NEW CEDAR SHINGLES OVER 1X NAILING STRIPS
OVER 30-LB TAR PAPER OVER 1" XPS RIGID INS. ON STUDS
TAPE VERT INSUL. JOINTS AND THROUGH FLASH HORIZ. JOINT.
WALL R-VALUE >21

INTERIOR:
1/2" PAINTED GYPSUM BD. FINISH (LATEX/BREATHABLE) OVER
VAPOR BARRIER OVER 2X6 STUDS 24" OC. WITH
R13 COTTON FIBER INSULATION

RADIANT HEATED CONCRETE FLOOR
-5" REINFORCED CONCRETE SLAB
ON 6 ML POLY VAPOR BARRIER
OVER 4" RIGID INSULATION, JOINTS TAPED

INTERIOR FILL: CRUSHED STONE/SAND OVER COMPACTED
OR UNDISTURBED SOIL

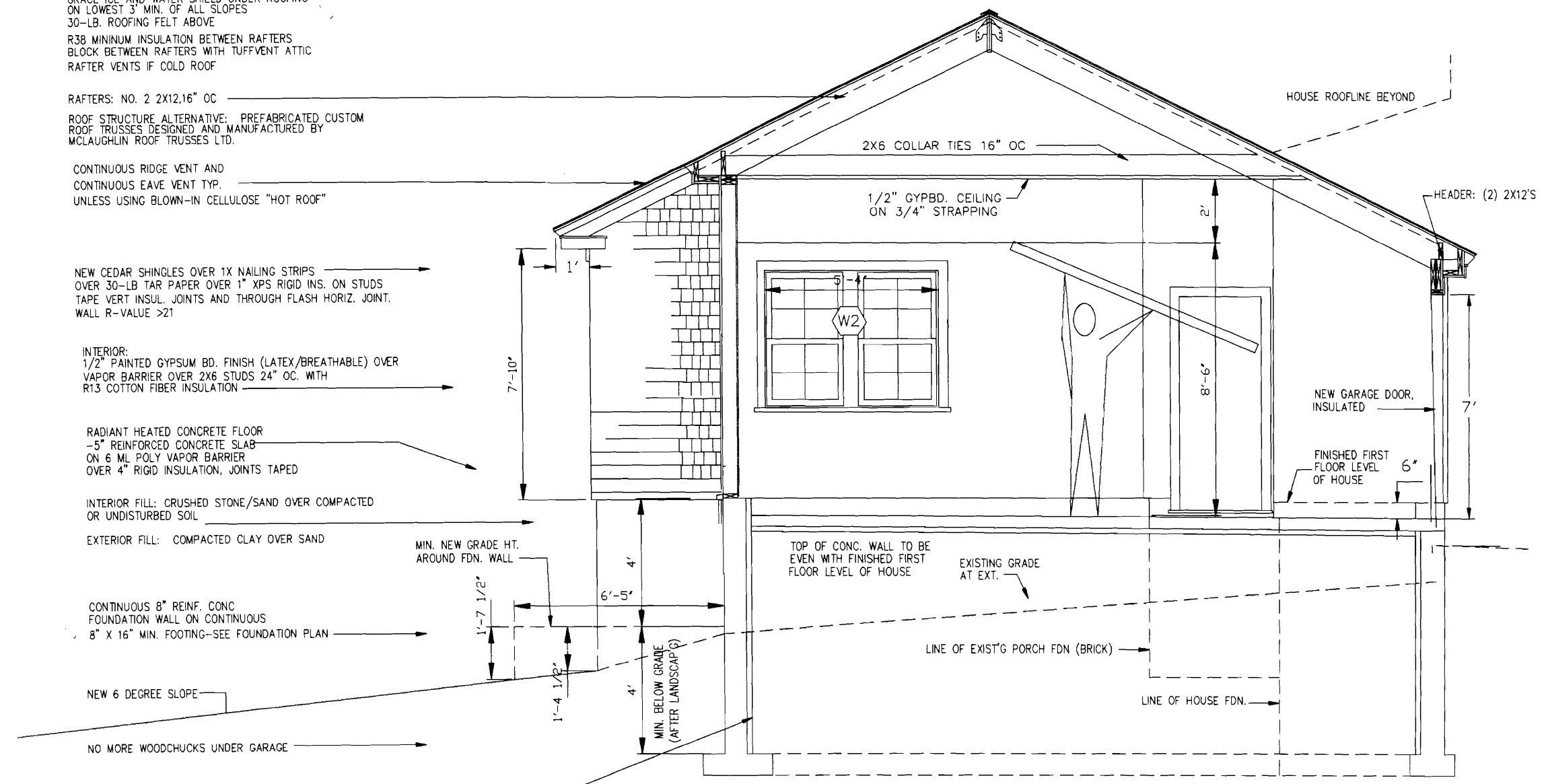
EXTERIOR FILL: COMPACTED CLAY OVER SAND

CONTINUOUS 8" REINF. CONC
FOUNDATION WALL ON CONTINUOUS
8" X 16" MIN. FOOTING-SEE FOUNDATION PLAN

NEW 6 DEGREE SLOPE

NO MORE WOODCHUCKS UNDER GARAGE

2" RIGID FOAM INSUL. FULL HEIGHT OF CONC. WALL
USE THERMAX WHERE EXPOSED, SEAL JOINTS
TYPICAL AT ENTIRE FOUNDATION WALL



1 SECTION AT GARAGE WORKSHOP
SCALE: 1/4"=1'-0"

