



IBC

Better Boilers

ibcboiler.com

ibcboiler.com

ibcboiler.com



SL 20-115G2

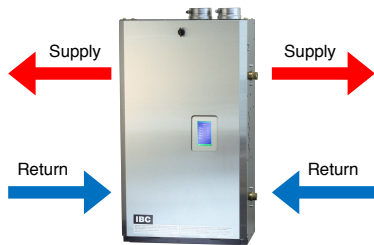
20,000 to 115,000 BTU/H
Condensing Boiler



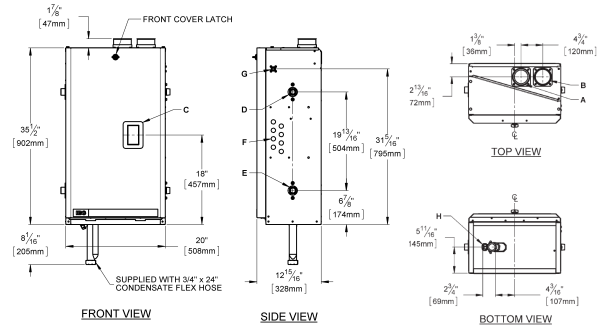
- With Supply and Return connections on both sides of the boiler your installation can't get any easier. Use the left side, the right side or both ..the choice is yours
- **New Touch Screen Boiler Controller**
 Express set up - Remote monitoring & diagnostics
 Easy USB programmability - True native BACnet
 Intuitive alert system
 Easy homeowner DHW temp adjust
- Built-in 4-load priority management and switching
- Connect your IBC Indirect Water Tank directly to the boiler without a primary loop
- Industry leading turndown ratio of 5.75 : 1 means you have the power to heat your home in the coldest weather yet reduce short cycling when the weather is mild
- Built-in outdoor reset control of water temperature
- Better efficiency 95% AFUE
- Very low water side and combustion side pressure drops
- Venting up to 480 feet
- Left and right clearance as low as 1"
- Limited lifetime residential heat exchanger warranty



Reliable Home Comfort



Description	SL 20-115G2
A Exhaust Outlet	3" Schedule 40
B Combustion Air	3" Schedule 40
C Touch Screen Display	2-1/4" x 4"
D Water Outlet	1" NPT - M
E Water Inlet	1" NPT - M
F Knock-Outs (8)	1/2"
G Gas Inlet	1/2" NPT - F
H Condensate Outlet	3/4" Hose



Specifications	SL 20-115G2
CSA Input (Natural Gas or Propane *) - MBH	20 - 115
CSA Input (Natural Gas or Propane *) - KW	6 - 34
CSA Output - MBH	19 - 109
CSA Output - KW	5.5 - 32
A.F.U.E	95.00%
Min gas pressure (Nat. Gas or Propane) - inch w.c.	5
Max gas pressure (Nat. Gas or Propane) - inch w.c.	14
Power (120Vac/60Hz) - Watts @ full fire - Watts	54
Weight (empty) - lbs/Kg	85/39
Pressure vessel water content - USG/Liters	2.9 / 11
Max boiler flow rate - USgpm	14
Min boiler flow rate - USgpm	2
Max operating pressure - psig +	30
Min water pressure - psig	8
Approved installation altitude - ASL	0 - 12,000 ft
Ambient temperature - Low (°F/°C)	32°F / 0°C
Ambient temperature - High (°F/°C)	122°F / 50°C
Max relative humidity (non-condensing)	90%
Min water Temperature (°F/°C)	34°F / 1°C
Max water Temperature (electronic-limit) (°F/°C)	190°F / 88°C
Max water Temperature (mechanical hi-limit) (°F/°C)	200°F / 93°C
Max ΔT - supply / return (electronic fence)	40°F
Maximum equivalent vent length each side 2"	100'
Maximum equivalent vent length each side 3"	240'
(Natural Gas or Propane)	
Air intake options: either direct vent or indoor supply	

* Natural Gas boilers require a Propane conversion kit to be ordered separately if converting a from Natural Gas to Propane. Propane boilers require a Natural Gas conversion kit to be ordered separately if converting a Propane boiler to Natural Gas.

+ Boilers are shipped with 30psi pressure relief valve.

Surface	Distance from combustible surfaces	Recommended distance for installation and service
Front	2"	24"
Rear	0"	0"
Left Side	1"	4" (min. for piping clearance)
Right Side	1"	4" (min. for piping clearance)
Top	2"	6" (for vent connection)
Bottom	0"	12" (for condensate trap)

Exhaust pipe size	Maximum equivalent length
Sched.40; Rigid PPs	(each side)
2"	100'
3"	240'
90° long sweep elbow	Allow 5' equivalent
90° vent elbow	Allow 8' equivalent
45° elbow	Allow 3' equivalent
PP's 87-90° elbows	Allow 8' equivalent
Flexible PPs	
2" Flexible	45' (max) lineal x 1.4 = equivalent
3" Flexible	98' (max) actual lineal x 1.2 = equivalent

On Natural Gas models: to maintain the full firing rate at elevations over 2000' use 3" Flue Gas Exhaust piping and 3" Combustion Air Piping or replace the burner with Part# 180-016 Knitted Metal Burner

Boiler Head Loss							
Flow rate (gpm)	2	4	6	8	10	12	14
Head loss @ flow (ft wc)	0.5'	1.5'	2.5'	3'	4'	4.5'	6'

Pressure vessel head loss

