

140' 4"

140' 4"

100' 4"

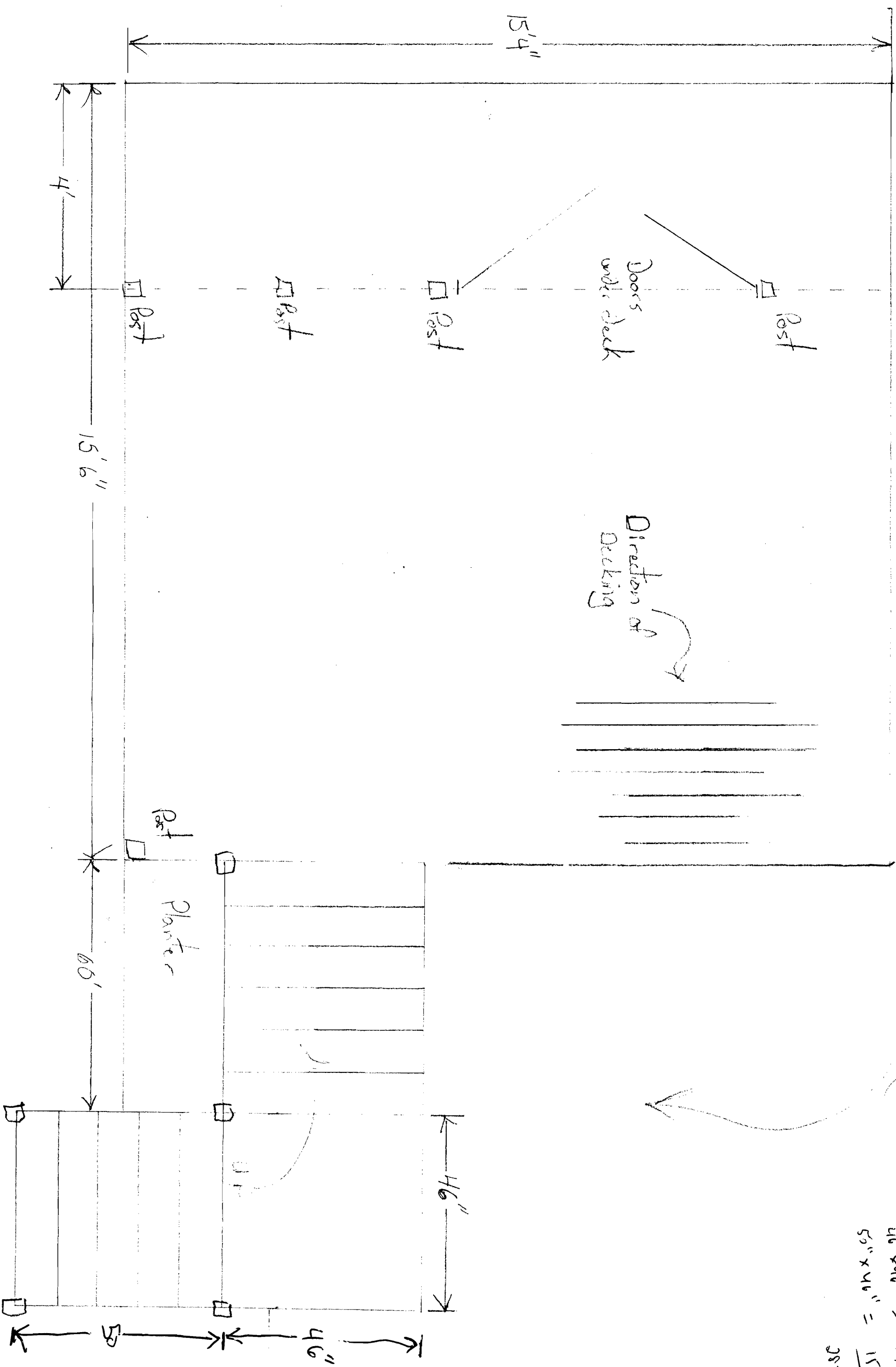
100' 4"

R3 Lot 3:14

lot size ~~2000~~ 14,000 sq ft

Front 25' min - N/A  
 rear 25' min. - 24' 5" given  
 side - 15' long - 8' - ~~7' given~~ 8' revised  
 lot coverage 35% = 4900 sq ft  
 (OK)  
 148,145 \$

Devine Woodworking  
 174 Langfellow St.  
 Portland  
 Alistar Raymond



$15'6'' \times 15'4'' =$   
 $15.5' \times 15.5' = 237.62 \text{ sq ft}$   
 $60'' \times 46'' = 2760 \text{ sq in} = 19.17 \text{ sq ft}$   
 $46'' \times 46'' = 2116 \text{ sq in} = 14.69 \text{ sq ft}$   
 $50'' \times 46'' = 2300 \text{ sq in} = 15.97 \text{ sq ft}$   
 $287.45$