

| | |
|-------------------|-------|
| Job Name: | |
| System Reference: | Date: |

GENERAL FEATURES

- Quiet operation
- Built-in base pan heater to prevent ice in drain pan
- Limited warranty: five years parts and seven years compressors

ACCESSORIES

- Three-port Branch Box (PAC-MKA30BC)
- Five-port Branch Box (PAC-MKA50BC)
- Distribution Pipe for Flare Connection (MSDD-50AR; necessary for installing two branch boxes)
- Distribution Pipe for Brazed Connection (MSDD-50BR; necessary for installing two branch boxes)
- 3/8" x 1/2" Port Adapter (MAC-A454JP)
- 1/2" x 3/8" Port Adapter (MAC-A455JP)
- 1/2" x 5/8" Port Adapter (MAC-A456JP)
- 1/4" x 3/8" Port Adapter (PAC-493PI)
- 3/8" x 5/8" Port Adapter (PAC-SG76RJ)
- Airflow Guide (PAC-SH96SG-E)



Outdoor Unit: MXZ-8C48NAHZ

(For data on specific indoor units, see the MXZ-C Technical and Service Manual.)

| Specifications | | | Model Name |
|---|--------------------------------------|------------------------------|--|
| Unit Type | | | MXZ-8C48NAHZ |
| Cooling* (Non-ducted / Ducted) | Rated Capacity | Btu/h | 48,000 / 48,000 |
| | Capacity Range | Btu/h | 6,000 - 48,000 |
| | Rated Total Input | W | 4,000 / 5,050 |
| Heating at 47°F* (Non-ducted / Ducted) | Rated Capacity | Btu/h | 54,000 / 54,000 |
| | Capacity Range | Btu/h | 7,200 - 54,000 |
| | Rated Total Input | W | 4,220 / 4,990 |
| Heating at 17°F* (Non-ducted/Ducted) | Rated Capacity | Btu/h | 40,000 / 43,000 |
| | Maximum Capacity | Btu/h | 54,000 / 54,000 |
| | Rated Total Input | W | 4,340 / 5,250 |
| Heating at 5°F* | Maximum Capacity | Btu/h | 54,000 |
| Energy Star® (ENERGY STAR products are third-party certified by an EPA-recognized Certification Body.) | | | Yes |
| Electrical Requirements | Power Supply | Voltage, Phase, Hertz | 208 / 230V, 1-Phase, 60 Hz |
| | Recommended Fuse/Breaker Size | A | 50 |
| | MCA | A | 42 |
| Voltage | Indoor - Outdoor S1-S2 | V | AC 208 / 230 |
| | Indoor - Outdoor S2-S3 | V | DC ±24 |
| Compressor | | | Hermetic |
| Fan Motor (ECM) | | F.L.A. | 0.4+0.4 |
| Sound Pressure Level | Cooling | dB(A) | 51 |
| | Heating | dB(A) | 54 |
| External Dimensions (H x W x D) | | In / mm | 52-11/16 x 41-11/32 x 13+1 1338 x 1050 x 330+25 |
| Net Weight | | Lbs / kg | 276 / 125 |
| External Finish | | | Munsell No. 3Y 7.8/11 |
| Refrigerant Pipe Size O.D. — Eight Ports | Liquid (High Pressure) | In / mm | 3/8 / 9.52 |
| | Gas (Low Pressure) | In / mm | 5/8 / 15.88 |
| Max. Refrigerant Line Length | | Ft / m | 492 (150) |
| Max. Piping Length for Each Indoor Unit | | Ft / m | 262 (80) |
| Max. Refrigerant Pipe Height Difference | If IDU is Above ODU | Ft / m | 131 (40) |
| | If IDU is Below ODU | Ft / m | 164 (50) |
| Connection Method | | | Flared/Flared |
| Refrigerant | | | R410A |

* Rating Conditions per AHRI Standard:

Cooling | Indoor: 80° F (27° C) DB / 67° F (19° C) WB
Cooling | Outdoor: 95° F (35° C) DB / 75° F (24° C) WB

Heating at 47° F | Indoor: 70° F (21° C) DB
Heating at 47° F | Outdoor: 47° F (8° C) DB / 43° F (6° C) WB

Heating at 17° F | Indoor: 70° F (21° C) DB
Heating at 17° F | Outdoor: 17° F (-8° C) DB / 15° F (-9° C) WB

SPECIFICATIONS: MXZ-8C48NAHZ, contd.

Operating Range:

| Outdoor | |
|---------|---|
| Cooling | D.B. 23 to 115° F [D.B. -5 to 46° C]*1 |
| Heating | D.B. -13 to 70° F [D.B. -25 to 21° C] |

*1. D.B. 5 to 115° F [D.B. -15 to 46° C],
when an optional Air Outlet Guide is installed.

Energy Efficiencies:

| Indoor Unit Type | SEER | EER | HSPF | COP @ 47°F | COP @ 17°F |
|------------------------------|-------|-------|-------|------------|------------|
| Non-ducted | 18.9 | 12.0 | 11.0 | 3.75 | 2.70 |
| Ducted and Non-ducted | 16.80 | 10.75 | 10.50 | 3.46 | 2.55 |
| Ducted | 14.7 | 9.5 | 10.0 | 3.17 | 2.40 |

Multi-zone Indoor/Outdoor Combination Table

| | MSZ-FH* | MSZ-GE* MSZ-GL* | MFZ* | MVZ* | SEZ-KD* | SLZ* | PCA (A24)* | PLA* | PEAD* |
|---------------------|---------|--------------------|------|------|---------|------|------------|------|---------------|
| MXZ-8C48NAHZ | OK | OK | OK | OK | OK | OK | NO | OK | 24, 30, 36 OK |

* Refer to indoor unit submittal.

Notes:

- Minimum of two Indoor Units must be connected to the MXZ-8C48NAHZ.
- Minimum installed capacity cannot be less than 12,000 Btu/h.
- System can operate with only one Indoor Unit turned on.
- May connect to any style indoor unit or combination.
- Information provided at 208/230V.
Refer to the MXZ-C Technical & Service Manual for detailed specifications and additional information per Indoor Unit Combination.

MVZ CONNECTION RULES:

- Up to 2 MVZ's may be connected to this system.
- When 2 MVZ's are connected, no additional indoor units can be used.
- When 1 MVZ is connected, additional indoor units can be connected.
- When 1 MVZ is connected, total connected capacity must be 130% or less.
- Connection limitations are altered with the use of the SPTB1 accessory. Refer to the SPTB1 documentation for more details.

Notes:

MXZ-8C48NAHZ SYSTEM DESIGN

| | | | | |
|----------------------------|--|--|--------------------|----------|
| Outdoor unit | | MXZ-8C48NAHZ | | |
| | | 5HP | | |
| | | Rated capacity (kBTU/h) | Cooling Heating | 48 54 |
| | | Refrigerant | | R410A |
| Connectable indoor unit | Capacity | | Type 06 to Type 36 | |
| | Caution: The indoor unit which rated capacity exceeds 36 kBTU/h (Type 36) can NOT be connected. | | | |
| | Number of units | | 2 to 8 units | |
| Total system wide capacity | | 25 to 130% of outdoor unit capacity (12 to 62.4 kBTU/h) | | |
| Connectable branch box | Number of units | | 1 or 2 units | |



| Connectable indoor unit lineups (Heat pump inverter type) | | | Capacity class [kBTU/h] | | | | | | |
|---|------------------------|---------------------------|-------------------------|----|----|----|----|----|----|
| Model type | Model name | Capacity class [kBTU/h] | | | | | | | |
| | | 06 | 09 | 12 | 15 | 18 | 24 | 30 | 36 |
| Wall mounted | Deluxe | MSZ-FE09/12/18NA | ● | ● | | ● | | | |
| | | MSZ-FH09/12/15NA | ● | ● | ● | | | | |
| | Standard | MSZ-GE06/09/12/15/18/24NA | ● | ● | ● | ● | ● | | |
| Ceiling concealed | Low static pressure | SEZ-KD09/12/15/18NA | | ● | ● | ● | | | |
| | Middle static pressure | PEAD-A24/30/36AA4 | | | | | ● | ● | ● |
| 4-way ceiling cassette | 2 by 2 type | SLZ-KA09/12/15NA | | ● | ● | ● | | | |
| | Standard | PLA-A12/18/24/30/36BA4 | | | ● | | ● | ● | ● |
| Floor standing | | MFZ-KA09/12/18NA | | ● | ● | | ● | | |
| Multi-position | | MVZ-A12/18/24/30/36AA4 | | | ● | | ● | ● | ● |

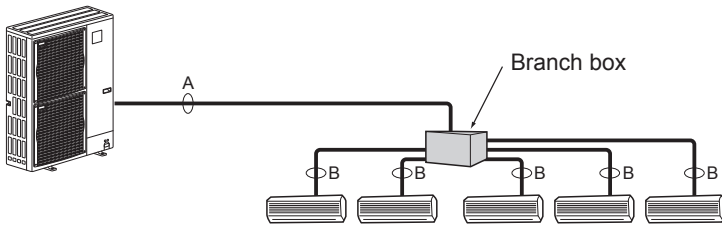


| Branch box | PAC-MKA50BC | PAC-MKA30BC |
|--|---------------------------|---------------------------|
| Number of branches (Indoor unit that can be connected) | 5 branches (MAX. 5 units) | 3 branches (MAX. 3 units) |

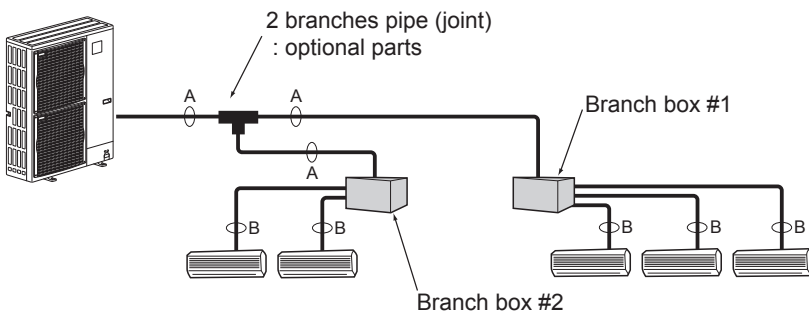
Note: A maximum of 2 branch boxes can be connected to 1 outdoor unit.

| Branch Box Combinations | |
|-------------------------|-----------------|
| Three-port | Five-port |
| 1 | 0 |
| 0 | 1 |
| 1 | 1 |
| 2 | 0 |
| 0 | 2 (Up to 8 IDU) |

- If Using One Branch Box
Flare connection employed (No brazing)



- If Using Two Branch Boxes



- Installation procedure (2 branches pipe (joint))
Refer to the installation manuals of MSDD-50AR-E and MSDD-50BR-E.

Piping connection size

| | A | B |
|--------|-------------------------|---|
| Liquid | φ9.52 mm (3/8 inch) | The piping connection size differs according to the type and capacity of indoor units. Match the piping connection size of branch box with indoor unit. If the piping connection size of branch box does not match the piping connection size of indoor unit, use optional different-diameter (deformed) joints to the branch box side. |
| Gas | φ15.88 mm (5/8 inch) | (Connect deformed joint directly to the branch box side.) |

MXZ-8C48NAHZ COOLING AND HEATING CAPACITY AND CHARACTERISTICS

1. Method for obtaining system cooling and heating capacity:

To obtain the system cooling and heating capacity and the electrical characteristics of the outdoor unit, first add up the ratings of all the indoor units connected to the outdoor unit (see table below). For Standard Capacity Diagram, please refer to the MXZ-C Technical & Service Manual.

(1) Capacity of indoor unit

| | Model Number for indoor unit | Model 06 | Model 09 | Model 12 | Model 15 | Model 18 | Model 24 | Model 30 | Model 36 |
|----------|------------------------------|----------|----------|----------|--|--|----------|----------|----------|
| M series | Model Capacity [kBtu/h] | 6.0 | 9.0 | 12.0 | 14.0* ¹ 15.0* ² | 17.2* ³ 18.0* ⁴ | 22.5 | — | — |
| P series | | — | — | 12.0 | — | 18.0 | 24.0 | 30.0 | 35.0 |
| SEZ | | — | 8.1 | 11.5 | 14.1 | 17.2 | — | — | — |
| SLZ | | — | 8.4 | 11.1 | 15.0 | — | — | — | — |
| MVZ | | — | — | 12.0 | — | 18.0 | 24.0 | 30.0 | 36.0 |

*1 The value is for MSZ-GE15NA.

*2 The value is for MSZ-FH15NA.

*3 The value is for MSZ-GE/FH18NA.

*4 The value is for MSZ-FE18NA or MFZ-KA18NA.

(2) Sample calculation

1 System assembled from indoor and outdoor unit (in this example the total capacity of the indoor units is greater than that of the outdoor unit)

- Outdoor unit MXZ-5C42NAHZ
- Indoor unit MSZ-GE09NA × 2 + MSZ-FH15NA × 2

2 According to the conditions in 1, the total capacity of the indoor unit will be: 9.0 × 2 + 15.0 × 2 = 48.0

3 The following figures are obtained from the 16.8 total capacity of indoor units, referring the standard capacity diagram in "4-3-3. MXZ-5C42NAHZ <cooling>" and "4-3-4. MXZ-5C42NAHZ <heating>".

| Capacity (kBTU/h) | | Outdoor unit power consumption (kW) | | Outdoor unit current (A)/ 230 V | |
|-------------------|---------|-------------------------------------|---------|---------------------------------|---------|
| Cooling | Heating | Cooling | Heating | Cooling | Heating |
| A 42.0 | B 48.0 | 3.46 | 4.37 | 15.26 | 19.31 |

2. Method for obtaining the heating and cooling capacity of an indoor unit:

(1) The capacity of each indoor unit (kW) = the capacity A (or B) × $\frac{\text{model capacity}}{\text{total model capacity of all indoor units}}$

(2) Sample calculation (using the system described above in 4-1-1. (2)):

During cooling:

- The total model capacity of the indoor unit is:
9.0 × 2 + 15.0 × 2 = 48.0 kBTU/h
Therefore, the capacity of MSZ-GE09NA and MSZ-FH15NA will be calculated as follows by using the formula in 4-1-2. (1):

$$\text{Model 09} = 42.0 \times \frac{9.0}{48.0} = 7.88 \text{ kBTU/h}$$

$$\text{Model 15} = 42.0 \times \frac{15.0}{48.0} = 13.13 \text{ kBTU/h}$$

During heating:

- The total model capacity of indoor unit is:
10.9 × 2 + 18.0 × 2 = 57.8 kBTU/h
Therefore, the capacity of MSZ-GE09NA and MSZ-FH15NA will be calculated as follows by using the formula in 4-1-2. (1):

$$\text{Model 25} = 48.0 \times \frac{10.9}{57.8} = 9.05 \text{ kBTU/h}$$

$$\text{Model 50} = 48.0 \times \frac{18.0}{57.8} = 14.95 \text{ kBTU/h}$$

MXZ-8C48NAHZ OPERATIONAL PERFORMANCE

| Operational Performance for Indoor Unit Combinations (Unit A + Unit B + Unit C+ Unit D + Unit E + Unit F + Unit H) | Cooling Capacity Range (Btu/h) | | | | | | | | Power Usage Range (W) | Current (208/230V) |
|---|--------------------------------|--------|--------|--------|--------|--------|--------|--------|-----------------------|--------------------|
| | Heating Capacity Range (Btu/h) | | | | | | | | | |
| | Unit A | Unit B | Unit C | Unit D | Unit E | Unit F | Unit G | Unit H | | |
| 6 | 6000 | 0 | 0 | 0 | 0 | 0 | 0 | 0 | 600 | 3.1 / 2.7 |
| | 7500 | 0 | 0 | 0 | 0 | 0 | 0 | 0 | 601 | 3 / 2.8 |
| 9 | 9000 | 0 | 0 | 0 | 0 | 0 | 0 | 0 | 700 | 3.6 / 3.1 |
| | 11300 | 0 | 0 | 0 | 0 | 0 | 0 | 0 | 901 | 4.5 / 4.3 |
| 12 | 12000 | 0 | 0 | 0 | 0 | 0 | 0 | 0 | 801 | 4 / 3.6 |
| | 15000 | 0 | 0 | 0 | 0 | 0 | 0 | 0 | 1200 | 6 / 5.9 |
| 15 | 15000 | 0 | 0 | 0 | 0 | 0 | 0 | 0 | 1001 | 5 / 4.4 |
| | 18800 | 0 | 0 | 0 | 0 | 0 | 0 | 0 | 1500 | 7.5 / 7.4 |
| 18 | 18000 | 0 | 0 | 0 | 0 | 0 | 0 | 0 | 1201 | 5.9 / 5.3 |
| | 22500 | 0 | 0 | 0 | 0 | 0 | 0 | 0 | 1800 | 9 / 9 |
| 24 | 24000 | 0 | 0 | 0 | 0 | 0 | 0 | 0 | 1600 | 7.8 / 7 |
| | 30000 | 0 | 0 | 0 | 0 | 0 | 0 | 0 | 2400 | 12 / 12.1 |
| 30 | 30000 | 0 | 0 | 0 | 0 | 0 | 0 | 0 | 2500 | 12 / 11.5 |
| | 37500 | 0 | 0 | 0 | 0 | 0 | 0 | 0 | 3450 | 17 / 16.1 |
| 36 | 36000 | 0 | 0 | 0 | 0 | 0 | 0 | 0 | 3800 | 16.3 / 16 |
| | 45000 | 0 | 0 | 0 | 0 | 0 | 0 | 0 | 4502 | 22 / 20.1 |
| 6 + 6 | 6000 | 6000 | 0 | 0 | 0 | 0 | 0 | 0 | 801 | 4 / 3.6 |
| | 7500 | 7500 | 0 | 0 | 0 | 0 | 0 | 0 | 1200 | 6 / 5.9 |
| 6 + 9 | 6000 | 9000 | 0 | 0 | 0 | 0 | 0 | 0 | 1001 | 5 / 4.4 |
| | 7520 | 11280 | 0 | 0 | 0 | 0 | 0 | 0 | 1500 | 7.5 / 7.4 |
| 6 + 12 | 6000 | 12000 | 0 | 0 | 0 | 0 | 0 | 0 | 1201 | 5.9 / 5.3 |
| | 7500 | 15000 | 0 | 0 | 0 | 0 | 0 | 0 | 1800 | 9 / 9 |
| 6 + 15 | 6000 | 15000 | 0 | 0 | 0 | 0 | 0 | 0 | 1401 | 6.9 / 6.2 |
| | 7514 | 18786 | 0 | 0 | 0 | 0 | 0 | 0 | 2100 | 10.5 / 10.5 |
| 6 + 18 | 6000 | 18000 | 0 | 0 | 0 | 0 | 0 | 0 | 1600 | 7.8 / 7 |
| | 7500 | 22500 | 0 | 0 | 0 | 0 | 0 | 0 | 2400 | 12 / 12.1 |
| 6 + 24 | 6000 | 24000 | 0 | 0 | 0 | 0 | 0 | 0 | 2500 | 12 / 11.5 |
| | 7500 | 30000 | 0 | 0 | 0 | 0 | 0 | 0 | 3450 | 17 / 16.1 |
| 6 + 30 | 6000 | 30000 | 0 | 0 | 0 | 0 | 0 | 0 | 3800 | 16.3 / 16 |
| | 7500 | 37500 | 0 | 0 | 0 | 0 | 0 | 0 | 4502 | 22 / 20.1 |
| 6 + 36 | 6000 | 36000 | 0 | 0 | 0 | 0 | 0 | 0 | 4000 | 19.5 / 19.5 |
| | 6857 | 41143 | 0 | 0 | 0 | 0 | 0 | 0 | 5052 | 24.8 / 22.6 |
| 9 + 9 | 9000 | 9000 | 0 | 0 | 0 | 0 | 0 | 0 | 1201 | 5.9 / 5.3 |
| | 11250 | 11250 | 0 | 0 | 0 | 0 | 0 | 0 | 1800 | 9 / 9 |
| 9 + 12 | 9000 | 12000 | 0 | 0 | 0 | 0 | 0 | 0 | 1401 | 6.9 / 6.2 |
| | 11271 | 15029 | 0 | 0 | 0 | 0 | 0 | 0 | 2100 | 10.5 / 10.5 |
| 9 + 15 | 9000 | 15000 | 0 | 0 | 0 | 0 | 0 | 0 | 1600 | 7.8 / 7 |
| | 11250 | 18750 | 0 | 0 | 0 | 0 | 0 | 0 | 2400 | 12 / 12.1 |
| 9 + 18 | 9000 | 18000 | 0 | 0 | 0 | 0 | 0 | 0 | 2050 | 9.9 / 9.3 |
| | 11267 | 22533 | 0 | 0 | 0 | 0 | 0 | 0 | 2925 | 14.5 / 14.1 |
| 9 + 24 | 9000 | 24000 | 0 | 0 | 0 | 0 | 0 | 0 | 2950 | 14.2 / 13.8 |
| | 11264 | 30036 | 0 | 0 | 0 | 0 | 0 | 0 | 3975 | 19.5 / 18.1 |
| 9 + 30 | 9000 | 30000 | 0 | 0 | 0 | 0 | 0 | 0 | 4100 | 17.9 / 17.8 |
| | 10731 | 35769 | 0 | 0 | 0 | 0 | 0 | 0 | 4777 | 23.4 / 21.3 |
| 9 + 36 | 9000 | 36000 | 0 | 0 | 0 | 0 | 0 | 0 | 4525 | 22.2 / 21 |
| | 10200 | 40800 | 0 | 0 | 0 | 0 | 0 | 0 | 5327 | 26.2 / 23.8 |
| 12 + 12 | 12000 | 12000 | 0 | 0 | 0 | 0 | 0 | 0 | 1600 | 7.8 / 7 |
| | 15000 | 15000 | 0 | 0 | 0 | 0 | 0 | 0 | 2400 | 12 / 12.1 |
| 12 + 15 | 12000 | 15000 | 0 | 0 | 0 | 0 | 0 | 0 | 2050 | 9.9 / 9.3 |
| | 15022 | 18778 | 0 | 0 | 0 | 0 | 0 | 0 | 2925 | 14.5 / 14.1 |
| 12 + 18 | 12000 | 18000 | 0 | 0 | 0 | 0 | 0 | 0 | 2500 | 12 / 11.5 |
| | 15000 | 22500 | 0 | 0 | 0 | 0 | 0 | 0 | 3450 | 17 / 16.1 |
| 12 + 24 | 12000 | 24000 | 0 | 0 | 0 | 0 | 0 | 0 | 3800 | 16.3 / 16 |
| | 15000 | 30000 | 0 | 0 | 0 | 0 | 0 | 0 | 4502 | 22 / 20.1 |
| 12 + 30 | 12000 | 30000 | 0 | 0 | 0 | 0 | 0 | 0 | 4000 | 19.5 / 19.5 |
| | 13714 | 34286 | 0 | 0 | 0 | 0 | 0 | 0 | 5052 | 24.8 / 22.6 |
| 12 + 36 | 12000 | 36000 | 0 | 0 | 0 | 0 | 0 | 0 | 5052 | 24.8 / 22.5 |
| | 13500 | 40500 | 0 | 0 | 0 | 0 | 0 | 0 | 5602 | 27.6 / 25 |
| 15 + 15 | 15000 | 15000 | 0 | 0 | 0 | 0 | 0 | 0 | 2500 | 12 / 11.5 |
| | 18750 | 18750 | 0 | 0 | 0 | 0 | 0 | 0 | 3450 | 17 / 16.1 |

MXZ-8C48NAHZ OPERATIONAL PERFORMANCE, contd.

| Operational Performance for Indoor Unit Combinations (Unit A + Unit B + Unit C+ Unit D + Unit E + Unit F + Unit H) | Cooling Capacity Range (Btu/h) | | | | | | | | Power Usage Range (W) | Current (208/230V) |
|---|--------------------------------|--------|--------|--------|--------|--------|--------|--------|--------------------------------|-----------------------|
| | Heating Capacity Range (Btu/h) | | | | | | | | | |
| | Unit A | Unit B | Unit C | Unit D | Unit E | Unit F | Unit G | Unit H | | |
| 15 + 18 | 15000 | 18000 | 0 | 0 | 0 | 0 | 0 | 0 | 2950 | 14.2 / 13.8 |
| | 18773 | 22527 | 0 | 0 | 0 | 0 | 0 | 0 | 3975 | 19.5 / 18.1 |
| 15 + 24 | 15000 | 24000 | 0 | 0 | 0 | 0 | 0 | 0 | 4100 | 17.9 / 17.8 |
| | 17885 | 28615 | 0 | 0 | 0 | 0 | 0 | 0 | 4777 | 23.4 / 21.3 |
| 15 + 30 | 15000 | 30000 | 0 | 0 | 0 | 0 | 0 | 0 | 4525 | 22.2 / 21 |
| | 17000 | 34000 | 0 | 0 | 0 | 0 | 0 | 0 | 5327 | 26.2 / 23.8 |
| 15 + 36 | 14118 | 33882 | 0 | 0 | 0 | 0 | 0 | 0 | 4988 | 24.5 / 22.2 |
| | 15882 | 38118 | 0 | 0 | 0 | 0 | 0 | 0 | 5502 | 26.9 / 24.5 |
| 18 + 18 | 18000 | 18000 | 0 | 0 | 0 | 0 | 0 | 0 | 3800 | 16.3 / 16 |
| | 22500 | 22500 | 0 | 0 | 0 | 0 | 0 | 0 | 4502 | 22 / 20.1 |
| 18 + 24 | 18000 | 24000 | 0 | 0 | 0 | 0 | 0 | 0 | 4000 | 19.5 / 19.5 |
| | 20571 | 27429 | 0 | 0 | 0 | 0 | 0 | 0 | 5052 | 24.8 / 22.6 |
| 18 + 30 | 18000 | 30000 | 0 | 0 | 0 | 0 | 0 | 0 | 5052 | 24.8 / 22.5 |
| | 20250 | 33750 | 0 | 0 | 0 | 0 | 0 | 0 | 5602 | 27.6 / 25 |
| 18 + 36 | 16000 | 32000 | 0 | 0 | 0 | 0 | 0 | 0 | 4923 | 24.2 / 21.9 |
| | 18000 | 36000 | 0 | 0 | 0 | 0 | 0 | 0 | 5400 | 26.3 / 24 |
| 24 + 24 | 24000 | 24000 | 0 | 0 | 0 | 0 | 0 | 0 | 5052 | 24.8 / 22.5 |
| | 27000 | 27000 | 0 | 0 | 0 | 0 | 0 | 0 | 5602 | 27.6 / 25 |
| 24 + 30 | 21333 | 26667 | 0 | 0 | 0 | 0 | 0 | 0 | 4923 | 24.2 / 21.9 |
| | 24000 | 30000 | 0 | 0 | 0 | 0 | 0 | 0 | 5400 | 26.3 / 24 |
| 24 + 36 | 19200 | 28800 | 0 | 0 | 0 | 0 | 0 | 0 | 4795 | 23.5 / 21.3 |
| | 21600 | 32400 | 0 | 0 | 0 | 0 | 0 | 0 | 5250 | 25.7 / 23.3 |
| 30 + 30 | 24000 | 24000 | 0 | 0 | 0 | 0 | 0 | 0 | 4795 | 23.5 / 21.3 |
| | 27000 | 27000 | 0 | 0 | 0 | 0 | 0 | 0 | 5250 | 25.7 / 23.3 |
| 6 + 6 + 6 | 6000 | 6000 | 6000 | 0 | 0 | 0 | 0 | 0 | 1201 | 5.9 / 5.3 |
| | 7500 | 7500 | 7500 | 0 | 0 | 0 | 0 | 0 | 1800 | 9 / 9 |
| 6 + 6 + 9 | 6000 | 6000 | 9000 | 0 | 0 | 0 | 0 | 0 | 1401 | 6.9 / 6.2 |
| | 7514 | 7514 | 11271 | 0 | 0 | 0 | 0 | 0 | 2100 | 10.5 / 10.5 |
| 6 + 6 + 12 | 6000 | 6000 | 12000 | 0 | 0 | 0 | 0 | 0 | 1600 | 7.8 / 7 |
| | 7500 | 7500 | 15000 | 0 | 0 | 0 | 0 | 0 | 2400 | 12 / 12.1 |
| 6 + 6 + 15 | 6000 | 6000 | 15000 | 0 | 0 | 0 | 0 | 0 | 2050 | 9.9 / 9.3 |
| | 7511 | 7511 | 18778 | 0 | 0 | 0 | 0 | 0 | 2925 | 14.5 / 14.1 |
| 6 + 6 + 18 | 6000 | 6000 | 18000 | 0 | 0 | 0 | 0 | 0 | 2500 | 12 / 11.5 |
| | 7500 | 7500 | 22500 | 0 | 0 | 0 | 0 | 0 | 3450 | 17 / 16.1 |
| 6 + 6 + 24 | 6000 | 6000 | 24000 | 0 | 0 | 0 | 0 | 0 | 3800 | 16.3 / 16 |
| | 7500 | 7500 | 30000 | 0 | 0 | 0 | 0 | 0 | 4502 | 22 / 20.1 |
| 6 + 6 + 30 | 6000 | 6000 | 30000 | 0 | 0 | 0 | 0 | 0 | 4000 | 19.5 / 19.5 |
| | 6857 | 6857 | 34286 | 0 | 0 | 0 | 0 | 0 | 5052 | 24.8 / 22.6 |
| 6 + 6 + 36 | 6000 | 6000 | 36000 | 0 | 0 | 0 | 0 | 0 | 5052 | 24.8 / 22.5 |
| | 6750 | 6750 | 40500 | 0 | 0 | 0 | 0 | 0 | 5602 | 27.6 / 25 |
| 6 + 9 + 9 | 6000 | 9000 | 9000 | 0 | 0 | 0 | 0 | 0 | 1600 | 7.8 / 7 |
| | 7500 | 11250 | 11250 | 0 | 0 | 0 | 0 | 0 | 2400 | 12 / 12.1 |
| 6 + 9 + 12 | 6000 | 9000 | 12000 | 0 | 0 | 0 | 0 | 0 | 2050 | 9.9 / 9.3 |
| | 7511 | 11267 | 15022 | 0 | 0 | 0 | 0 | 0 | 2925 | 14.5 / 14.1 |
| 6 + 9 + 15 | 6000 | 9000 | 15000 | 0 | 0 | 0 | 0 | 0 | 2500 | 12 / 11.5 |
| | 7500 | 11250 | 18750 | 0 | 0 | 0 | 0 | 0 | 3450 | 17 / 16.1 |
| 6 + 9 + 18 | 6000 | 9000 | 18000 | 0 | 0 | 0 | 0 | 0 | 2950 | 14.2 / 13.8 |
| | 7509 | 11264 | 22527 | 0 | 0 | 0 | 0 | 0 | 3975 | 19.5 / 18.1 |
| 6 + 9 + 24 | 6000 | 9000 | 24000 | 0 | 0 | 0 | 0 | 0 | 4100 | 17.9 / 17.8 |
| | 7154 | 10731 | 28615 | 0 | 0 | 0 | 0 | 0 | 4777 | 23.4 / 21.3 |
| 6 + 9 + 30 | 6000 | 9000 | 30000 | 0 | 0 | 0 | 0 | 0 | 4525 | 22.2 / 21 |
| | 6800 | 10200 | 34000 | 0 | 0 | 0 | 0 | 0 | 5327 | 26.2 / 23.8 |
| 6 + 9 + 36 | 5647 | 8471 | 33882 | 0 | 0 | 0 | 0 | 0 | 4988 | 24.5 / 22.2 |
| | 6353 | 9529 | 38118 | 0 | 0 | 0 | 0 | 0 | 5502 | 26.9 / 24.5 |
| 6 + 12 + 12 | 6000 | 12000 | 12000 | 0 | 0 | 0 | 0 | 0 | 2500 | 12 / 11.5 |
| | 7500 | 15000 | 15000 | 0 | 0 | 0 | 0 | 0 | 3450 | 17 / 16.1 |
| 6 + 12 + 15 | 6000 | 12000 | 15000 | 0 | 0 | 0 | 0 | 0 | 2950 | 14.2 / 13.8 |
| | 7509 | 15018 | 18773 | 0 | 0 | 0 | 0 | 0 | 3975 | 19.5 / 18.1 |
| 6 + 12 + 18 | 6000 | 12000 | 18000 | 0 | 0 | 0 | 0 | 0 | 3800 | 16.3 / 16 |
| | 7500 | 15000 | 22500 | 0 | 0 | 0 | 0 | 0 | 4502 | 22 / 20.1 |

MXZ-8C48NAHZ OPERATIONAL PERFORMANCE, contd.

| Operational Performance for Indoor Unit Combinations (Unit A + Unit B + Unit C+ Unit D + Unit E + Unit F + Unit H) | Cooling Capacity Range (Btu/h) | | | | | | | | Power Usage Range (W) | Current (208/230V) |
|---|--------------------------------|--------|--------|--------|--------|--------|--------|--------|--------------------------------|-----------------------|
| | Heating Capacity Range (Btu/h) | | | | | | | | | |
| | Unit A | Unit B | Unit C | Unit D | Unit E | Unit F | Unit G | Unit H | | |
| 6 + 12 + 24 | 6000 | 12000 | 24000 | 0 | 0 | 0 | 0 | 0 | 4000 | 19.5 / 19.5 |
| | 6857 | 13714 | 27429 | 0 | 0 | 0 | 0 | 0 | 5052 | 24.8 / 22.6 |
| 6 + 12 + 30 | 6000 | 12000 | 30000 | 0 | 0 | 0 | 0 | 0 | 5052 | 24.8 / 22.5 |
| | 6750 | 13500 | 33750 | 0 | 0 | 0 | 0 | 0 | 5602 | 27.6 / 25 |
| 6 + 12 + 36 | 5333 | 10667 | 32000 | 0 | 0 | 0 | 0 | 0 | 4923 | 24.2 / 21.9 |
| | 6000 | 12000 | 36000 | 0 | 0 | 0 | 0 | 0 | 5400 | 26.3 / 24 |
| 6 + 15 + 15 | 6000 | 15000 | 15000 | 0 | 0 | 0 | 0 | 0 | 3800 | 16.3 / 16 |
| | 7500 | 18750 | 18750 | 0 | 0 | 0 | 0 | 0 | 4502 | 22 / 20.1 |
| 6 + 15 + 18 | 6000 | 15000 | 18000 | 0 | 0 | 0 | 0 | 0 | 4100 | 17.9 / 17.8 |
| | 7154 | 17885 | 21462 | 0 | 0 | 0 | 0 | 0 | 4777 | 23.4 / 21.3 |
| 6 + 15 + 24 | 6000 | 15000 | 24000 | 0 | 0 | 0 | 0 | 0 | 4525 | 22.2 / 21 |
| | 6800 | 17000 | 27200 | 0 | 0 | 0 | 0 | 0 | 5327 | 26.2 / 23.8 |
| 6 + 15 + 30 | 5647 | 14118 | 28235 | 0 | 0 | 0 | 0 | 0 | 4988 | 24.5 / 22.2 |
| | 6353 | 15882 | 31765 | 0 | 0 | 0 | 0 | 0 | 5502 | 26.9 / 24.5 |
| 6 + 15 + 36 | 5053 | 12632 | 30316 | 0 | 0 | 0 | 0 | 0 | 4859 | 23.8 / 21.6 |
| | 5684 | 14211 | 34105 | 0 | 0 | 0 | 0 | 0 | 5325 | 26 / 23.7 |
| 6 + 18 + 18 | 6000 | 18000 | 18000 | 0 | 0 | 0 | 0 | 0 | 4000 | 19.5 / 19.5 |
| | 6857 | 20571 | 20571 | 0 | 0 | 0 | 0 | 0 | 5052 | 24.8 / 22.6 |
| 6 + 18 + 24 | 6000 | 18000 | 24000 | 0 | 0 | 0 | 0 | 0 | 5052 | 24.8 / 22.5 |
| | 6750 | 20250 | 27000 | 0 | 0 | 0 | 0 | 0 | 5602 | 27.6 / 25 |
| 6 + 18 + 30 | 5333 | 16000 | 26667 | 0 | 0 | 0 | 0 | 0 | 4923 | 24.2 / 21.9 |
| | 6000 | 18000 | 30000 | 0 | 0 | 0 | 0 | 0 | 5400 | 26.3 / 24 |
| 6 + 18 + 36 | 4800 | 14400 | 28800 | 0 | 0 | 0 | 0 | 0 | 4795 | 23.5 / 21.3 |
| | 5400 | 16200 | 32400 | 0 | 0 | 0 | 0 | 0 | 5250 | 25.7 / 23.3 |
| 6 + 24 + 24 | 5333 | 21333 | 21333 | 0 | 0 | 0 | 0 | 0 | 4923 | 24.2 / 21.9 |
| | 6000 | 24000 | 24000 | 0 | 0 | 0 | 0 | 0 | 5400 | 26.3 / 24 |
| 6 + 24 + 30 | 4800 | 19200 | 24000 | 0 | 0 | 0 | 0 | 0 | 4795 | 23.5 / 21.3 |
| | 5400 | 21600 | 27000 | 0 | 0 | 0 | 0 | 0 | 5250 | 25.7 / 23.3 |
| 9 + 9 + 9 | 9000 | 9000 | 9000 | 0 | 0 | 0 | 0 | 0 | 2050 | 9.9 / 9.3 |
| | 11267 | 11267 | 11267 | 0 | 0 | 0 | 0 | 0 | 2925 | 14.5 / 14.1 |
| 9 + 9 + 12 | 9000 | 9000 | 12000 | 0 | 0 | 0 | 0 | 0 | 2500 | 12 / 11.5 |
| | 11250 | 11250 | 15000 | 0 | 0 | 0 | 0 | 0 | 3450 | 17 / 16.1 |
| 9 + 9 + 15 | 9000 | 9000 | 15000 | 0 | 0 | 0 | 0 | 0 | 2950 | 14.2 / 13.8 |
| | 11264 | 11264 | 18773 | 0 | 0 | 0 | 0 | 0 | 3975 | 19.5 / 18.1 |
| 9 + 9 + 18 | 9000 | 9000 | 18000 | 0 | 0 | 0 | 0 | 0 | 3800 | 16.3 / 16 |
| | 11250 | 11250 | 22500 | 0 | 0 | 0 | 0 | 0 | 4502 | 22 / 20.1 |
| 9 + 9 + 24 | 9000 | 9000 | 24000 | 0 | 0 | 0 | 0 | 0 | 4000 | 19.5 / 19.5 |
| | 10286 | 10286 | 27429 | 0 | 0 | 0 | 0 | 0 | 5052 | 24.8 / 22.6 |
| 9 + 9 + 30 | 9000 | 9000 | 30000 | 0 | 0 | 0 | 0 | 0 | 5052 | 24.8 / 22.5 |
| | 10125 | 10125 | 33750 | 0 | 0 | 0 | 0 | 0 | 5602 | 27.6 / 25 |
| 9 + 9 + 36 | 8000 | 8000 | 32000 | 0 | 0 | 0 | 0 | 0 | 4923 | 24.2 / 21.9 |
| | 9000 | 9000 | 36000 | 0 | 0 | 0 | 0 | 0 | 5400 | 26.3 / 24 |
| 9 + 12 + 12 | 9000 | 12000 | 12000 | 0 | 0 | 0 | 0 | 0 | 2950 | 14.2 / 13.8 |
| | 11264 | 15018 | 15018 | 0 | 0 | 0 | 0 | 0 | 3975 | 19.5 / 18.1 |
| 9 + 12 + 15 | 9000 | 12000 | 15000 | 0 | 0 | 0 | 0 | 0 | 3800 | 16.3 / 16 |
| | 11250 | 15000 | 18750 | 0 | 0 | 0 | 0 | 0 | 4502 | 22 / 20.1 |
| 9 + 12 + 18 | 9000 | 12000 | 18000 | 0 | 0 | 0 | 0 | 0 | 4100 | 17.9 / 17.8 |
| | 10731 | 14308 | 21462 | 0 | 0 | 0 | 0 | 0 | 4777 | 23.4 / 21.3 |
| 9 + 12 + 24 | 9000 | 12000 | 24000 | 0 | 0 | 0 | 0 | 0 | 4525 | 22.2 / 21 |
| | 10200 | 13600 | 27200 | 0 | 0 | 0 | 0 | 0 | 5327 | 26.2 / 23.8 |
| 9 + 12 + 30 | 8471 | 11294 | 28235 | 0 | 0 | 0 | 0 | 0 | 4988 | 24.5 / 22.2 |
| | 9529 | 12706 | 31765 | 0 | 0 | 0 | 0 | 0 | 5502 | 26.9 / 24.5 |
| 9 + 12 + 36 | 7579 | 10105 | 30316 | 0 | 0 | 0 | 0 | 0 | 4859 | 23.8 / 21.6 |
| | 8526 | 11368 | 34105 | 0 | 0 | 0 | 0 | 0 | 5325 | 26 / 23.7 |
| 9 + 15 + 15 | 9000 | 15000 | 15000 | 0 | 0 | 0 | 0 | 0 | 4100 | 17.9 / 17.8 |
| | 10731 | 17885 | 17885 | 0 | 0 | 0 | 0 | 0 | 4777 | 23.4 / 21.3 |
| 9 + 15 + 18 | 9000 | 15000 | 18000 | 0 | 0 | 0 | 0 | 0 | 4000 | 19.5 / 19.5 |
| | 10286 | 17143 | 20571 | 0 | 0 | 0 | 0 | 0 | 5052 | 24.8 / 22.6 |
| 9 + 15 + 24 | 9000 | 15000 | 24000 | 0 | 0 | 0 | 0 | 0 | 5052 | 24.8 / 22.5 |
| | 10125 | 16875 | 27000 | 0 | 0 | 0 | 0 | 0 | 5602 | 27.6 / 25 |

MXZ-8C48NAHZ OPERATIONAL PERFORMANCE, contd.

| Operational Performance for Indoor Unit Combinations (Unit A + Unit B + Unit C+ Unit D + Unit E + Unit F + Unit H) | Cooling Capacity Range (Btu/h) | | | | | | | | Power Usage Range (W) | Current (208/230V) |
|---|--------------------------------|--------|--------|--------|--------|--------|--------|--------|--------------------------------|-----------------------|
| | Heating Capacity Range (Btu/h) | | | | | | | | | |
| | Unit A | Unit B | Unit C | Unit D | Unit E | Unit F | Unit G | Unit H | | |
| 9 + 15 + 30 | 8000 | 13333 | 26667 | 0 | 0 | 0 | 0 | 0 | 4923 | 24.2 / 21.9 |
| | 9000 | 15000 | 30000 | 0 | 0 | 0 | 0 | 0 | 5400 | 26.3 / 24 |
| 9 + 15 + 36 | 7200 | 12000 | 28800 | 0 | 0 | 0 | 0 | 0 | 4795 | 23.5 / 21.3 |
| | 8100 | 13500 | 32400 | 0 | 0 | 0 | 0 | 0 | 5250 | 25.7 / 23.3 |
| 9 + 18 + 18 | 9000 | 18000 | 18000 | 0 | 0 | 0 | 0 | 0 | 4525 | 22.2 / 21 |
| | 10200 | 20400 | 20400 | 0 | 0 | 0 | 0 | 0 | 5327 | 26.2 / 23.8 |
| 9 + 18 + 24 | 8471 | 16941 | 22588 | 0 | 0 | 0 | 0 | 0 | 4988 | 24.5 / 22.2 |
| | 9529 | 19059 | 25412 | 0 | 0 | 0 | 0 | 0 | 5502 | 26.9 / 24.5 |
| 9 + 18 + 30 | 7579 | 15158 | 25263 | 0 | 0 | 0 | 0 | 0 | 4859 | 23.8 / 21.6 |
| | 8526 | 17053 | 28421 | 0 | 0 | 0 | 0 | 0 | 5325 | 26 / 23.7 |
| 9 + 24 + 24 | 7579 | 20211 | 20211 | 0 | 0 | 0 | 0 | 0 | 4859 | 23.8 / 21.6 |
| | 8526 | 22737 | 22737 | 0 | 0 | 0 | 0 | 0 | 5325 | 26 / 23.7 |
| 12 + 12 + 12 | 12000 | 12000 | 12000 | 0 | 0 | 0 | 0 | 0 | 3800 | 16.3 / 16 |
| | 15000 | 15000 | 15000 | 0 | 0 | 0 | 0 | 0 | 4502 | 22 / 20.1 |
| 12 + 12 + 15 | 12000 | 12000 | 15000 | 0 | 0 | 0 | 0 | 0 | 4100 | 17.9 / 17.8 |
| | 14308 | 14308 | 17885 | 0 | 0 | 0 | 0 | 0 | 4777 | 23.4 / 21.3 |
| 12 + 12 + 18 | 12000 | 12000 | 18000 | 0 | 0 | 0 | 0 | 0 | 4000 | 19.5 / 19.5 |
| | 13714 | 13714 | 20571 | 0 | 0 | 0 | 0 | 0 | 5052 | 24.8 / 22.6 |
| 12 + 12 + 24 | 12000 | 12000 | 24000 | 0 | 0 | 0 | 0 | 0 | 5052 | 24.8 / 22.5 |
| | 13500 | 13500 | 27000 | 0 | 0 | 0 | 0 | 0 | 5602 | 27.6 / 25 |
| 12 + 12 + 30 | 10667 | 10667 | 26667 | 0 | 0 | 0 | 0 | 0 | 4923 | 24.2 / 21.9 |
| | 12000 | 12000 | 30000 | 0 | 0 | 0 | 0 | 0 | 5400 | 26.3 / 24 |
| 12 + 12 + 36 | 9600 | 9600 | 28800 | 0 | 0 | 0 | 0 | 0 | 4795 | 23.5 / 21.3 |
| | 10800 | 10800 | 32400 | 0 | 0 | 0 | 0 | 0 | 5250 | 25.7 / 23.3 |
| 12 + 15 + 15 | 12000 | 15000 | 15000 | 0 | 0 | 0 | 0 | 0 | 4000 | 19.5 / 19.5 |
| | 13714 | 17143 | 17143 | 0 | 0 | 0 | 0 | 0 | 5052 | 24.8 / 22.6 |
| 12 + 15 + 18 | 12000 | 15000 | 18000 | 0 | 0 | 0 | 0 | 0 | 4525 | 22.2 / 21 |
| | 13600 | 17000 | 20400 | 0 | 0 | 0 | 0 | 0 | 5327 | 26.2 / 23.8 |
| 12 + 15 + 24 | 11294 | 14118 | 22588 | 0 | 0 | 0 | 0 | 0 | 4988 | 24.5 / 22.2 |
| | 12706 | 15882 | 25412 | 0 | 0 | 0 | 0 | 0 | 5502 | 26.9 / 24.5 |
| 12 + 15 + 30 | 10105 | 12632 | 25263 | 0 | 0 | 0 | 0 | 0 | 4859 | 23.8 / 21.6 |
| | 11368 | 14211 | 28421 | 0 | 0 | 0 | 0 | 0 | 5325 | 26 / 23.7 |
| 12 + 18 + 18 | 12000 | 18000 | 18000 | 0 | 0 | 0 | 0 | 0 | 5052 | 24.8 / 22.5 |
| | 13500 | 20250 | 20250 | 0 | 0 | 0 | 0 | 0 | 5602 | 27.6 / 25 |
| 12 + 18 + 24 | 10667 | 16000 | 21333 | 0 | 0 | 0 | 0 | 0 | 4923 | 24.2 / 21.9 |
| | 12000 | 18000 | 24000 | 0 | 0 | 0 | 0 | 0 | 5400 | 26.3 / 24 |
| 12 + 18 + 30 | 9600 | 14400 | 24000 | 0 | 0 | 0 | 0 | 0 | 4795 | 23.5 / 21.3 |
| | 10800 | 16200 | 27000 | 0 | 0 | 0 | 0 | 0 | 5250 | 25.7 / 23.3 |
| 12 + 24 + 24 | 9600 | 19200 | 19200 | 0 | 0 | 0 | 0 | 0 | 4795 | 23.5 / 21.3 |
| | 10800 | 21600 | 21600 | 0 | 0 | 0 | 0 | 0 | 5250 | 25.7 / 23.3 |
| 15 + 15 + 15 | 15000 | 15000 | 15000 | 0 | 0 | 0 | 0 | 0 | 4525 | 22.2 / 21 |
| | 17000 | 17000 | 17000 | 0 | 0 | 0 | 0 | 0 | 5327 | 26.2 / 23.8 |
| 15 + 15 + 18 | 15000 | 15000 | 18000 | 0 | 0 | 0 | 0 | 0 | 5052 | 24.8 / 22.5 |
| | 16875 | 16875 | 20250 | 0 | 0 | 0 | 0 | 0 | 5602 | 27.6 / 25 |
| 15 + 15 + 24 | 13333 | 13333 | 21333 | 0 | 0 | 0 | 0 | 0 | 4923 | 24.2 / 21.9 |
| | 15000 | 15000 | 24000 | 0 | 0 | 0 | 0 | 0 | 5400 | 26.3 / 24 |
| 15 + 15 + 30 | 12000 | 12000 | 24000 | 0 | 0 | 0 | 0 | 0 | 4795 | 23.5 / 21.3 |
| | 13500 | 13500 | 27000 | 0 | 0 | 0 | 0 | 0 | 5250 | 25.7 / 23.3 |
| 15 + 18 + 18 | 14118 | 16941 | 16941 | 0 | 0 | 0 | 0 | 0 | 4988 | 24.5 / 22.2 |
| | 15882 | 19059 | 19059 | 0 | 0 | 0 | 0 | 0 | 5502 | 26.9 / 24.5 |
| 15 + 18 + 24 | 12632 | 15158 | 20211 | 0 | 0 | 0 | 0 | 0 | 4859 | 23.8 / 21.6 |
| | 14211 | 17053 | 22737 | 0 | 0 | 0 | 0 | 0 | 5325 | 26 / 23.7 |
| 18 + 18 + 18 | 16000 | 16000 | 16000 | 0 | 0 | 0 | 0 | 0 | 4923 | 24.2 / 21.9 |
| | 18000 | 18000 | 18000 | 0 | 0 | 0 | 0 | 0 | 5400 | 26.3 / 24 |
| 18 + 18 + 24 | 14400 | 14400 | 19200 | 0 | 0 | 0 | 0 | 0 | 4795 | 23.5 / 21.3 |
| | 16200 | 16200 | 21600 | 0 | 0 | 0 | 0 | 0 | 5250 | 25.7 / 23.3 |
| 6 + 6 + 6 + 6 | 6000 | 6000 | 6000 | 6000 | 0 | 0 | 0 | 0 | 1600 | 7.8 / 7 |
| | 7500 | 7500 | 7500 | 7500 | 0 | 0 | 0 | 0 | 2400 | 12 / 12.1 |
| 6 + 6 + 6 + 9 | 6000 | 6000 | 6000 | 9000 | 0 | 0 | 0 | 0 | 2050 | 9.9 / 9.3 |
| | 7511 | 7511 | 7511 | 11267 | 0 | 0 | 0 | 0 | 2925 | 14.5 / 14.1 |

MXZ-8C48NAHZ OPERATIONAL PERFORMANCE, contd.

| Operational Performance for Indoor Unit Combinations (Unit A + Unit B + Unit C+ Unit D + Unit E + Unit F + Unit H) | Cooling Capacity Range (Btu/h) | | | | | | | | Power Usage Range (W) | Current (208/230V) |
|---|--------------------------------|--------|--------|--------|--------|--------|--------|--------|--------------------------------|-----------------------|
| | Heating Capacity Range (Btu/h) | | | | | | | | | |
| | Unit A | Unit B | Unit C | Unit D | Unit E | Unit F | Unit G | Unit H | | |
| 6 + 6 + 6 + 12 | 6000 | 6000 | 6000 | 12000 | 0 | 0 | 0 | 0 | 2500 | 12 / 11.5 |
| | 7500 | 7500 | 7500 | 15000 | 0 | 0 | 0 | 0 | 3450 | 17 / 16.1 |
| 6 + 6 + 6 + 15 | 6000 | 6000 | 6000 | 15000 | 0 | 0 | 0 | 0 | 2950 | 14.2 / 13.8 |
| | 7509 | 7509 | 7509 | 18773 | 0 | 0 | 0 | 0 | 3975 | 19.5 / 18.1 |
| 6 + 6 + 6 + 18 | 6000 | 6000 | 6000 | 18000 | 0 | 0 | 0 | 0 | 3800 | 16.3 / 16 |
| | 7500 | 7500 | 7500 | 22500 | 0 | 0 | 0 | 0 | 4502 | 22 / 20.1 |
| 6 + 6 + 6 + 24 | 6000 | 6000 | 6000 | 24000 | 0 | 0 | 0 | 0 | 4000 | 19.5 / 19.5 |
| | 6857 | 6857 | 6857 | 27429 | 0 | 0 | 0 | 0 | 5052 | 24.8 / 22.6 |
| 6 + 6 + 6 + 30 | 6000 | 6000 | 6000 | 30000 | 0 | 0 | 0 | 0 | 5052 | 24.8 / 22.5 |
| | 6750 | 6750 | 6750 | 33750 | 0 | 0 | 0 | 0 | 5602 | 27.6 / 25 |
| 6 + 6 + 6 + 36 | 5333 | 5333 | 5333 | 32000 | 0 | 0 | 0 | 0 | 4923 | 24.2 / 21.9 |
| | 6000 | 6000 | 6000 | 36000 | 0 | 0 | 0 | 0 | 5400 | 26.3 / 24 |
| 6 + 6 + 9 + 9 | 6000 | 6000 | 9000 | 9000 | 0 | 0 | 0 | 0 | 2500 | 12 / 11.5 |
| | 7500 | 7500 | 11250 | 11250 | 0 | 0 | 0 | 0 | 3450 | 17 / 16.1 |
| 6 + 6 + 9 + 12 | 6000 | 6000 | 9000 | 12000 | 0 | 0 | 0 | 0 | 2950 | 14.2 / 13.8 |
| | 7509 | 7509 | 11264 | 15018 | 0 | 0 | 0 | 0 | 3975 | 19.5 / 18.1 |
| 6 + 6 + 9 + 15 | 6000 | 6000 | 9000 | 15000 | 0 | 0 | 0 | 0 | 3800 | 16.3 / 16 |
| | 7500 | 7500 | 11250 | 18750 | 0 | 0 | 0 | 0 | 4502 | 22 / 20.1 |
| 6 + 6 + 9 + 18 | 6000 | 6000 | 9000 | 18000 | 0 | 0 | 0 | 0 | 4100 | 17.9 / 17.8 |
| | 7154 | 7154 | 10731 | 21462 | 0 | 0 | 0 | 0 | 4777 | 23.4 / 21.3 |
| 6 + 6 + 9 + 24 | 6000 | 6000 | 9000 | 24000 | 0 | 0 | 0 | 0 | 4525 | 22.2 / 21 |
| | 6800 | 6800 | 10200 | 27200 | 0 | 0 | 0 | 0 | 5327 | 26.2 / 23.8 |
| 6 + 6 + 9 + 30 | 5647 | 5647 | 8471 | 28235 | 0 | 0 | 0 | 0 | 4988 | 24.5 / 22.2 |
| | 6353 | 6353 | 9529 | 31765 | 0 | 0 | 0 | 0 | 5502 | 26.9 / 24.5 |
| 6 + 6 + 9 + 36 | 5053 | 5053 | 7579 | 30316 | 0 | 0 | 0 | 0 | 4859 | 23.8 / 21.6 |
| | 5684 | 5684 | 8526 | 34105 | 0 | 0 | 0 | 0 | 5325 | 26 / 23.7 |
| 6 + 6 + 12 + 12 | 6000 | 6000 | 12000 | 12000 | 0 | 0 | 0 | 0 | 3800 | 16.3 / 16 |
| | 7500 | 7500 | 15000 | 15000 | 0 | 0 | 0 | 0 | 4502 | 22 / 20.1 |
| 6 + 6 + 12 + 15 | 6000 | 6000 | 12000 | 15000 | 0 | 0 | 0 | 0 | 4100 | 17.9 / 17.8 |
| | 7154 | 7154 | 14308 | 17885 | 0 | 0 | 0 | 0 | 4777 | 23.4 / 21.3 |
| 6 + 6 + 12 + 18 | 6000 | 6000 | 12000 | 18000 | 0 | 0 | 0 | 0 | 4000 | 19.5 / 19.5 |
| | 6857 | 6857 | 13714 | 20571 | 0 | 0 | 0 | 0 | 5052 | 24.8 / 22.6 |
| 6 + 6 + 12 + 24 | 6000 | 6000 | 12000 | 24000 | 0 | 0 | 0 | 0 | 5052 | 24.8 / 22.5 |
| | 6750 | 6750 | 13500 | 27000 | 0 | 0 | 0 | 0 | 5602 | 27.6 / 25 |
| 6 + 6 + 12 + 30 | 5333 | 5333 | 10667 | 26667 | 0 | 0 | 0 | 0 | 4923 | 24.2 / 21.9 |
| | 6000 | 6000 | 12000 | 30000 | 0 | 0 | 0 | 0 | 5400 | 26.3 / 24 |
| 6 + 6 + 12 + 36 | 4800 | 4800 | 9600 | 28800 | 0 | 0 | 0 | 0 | 4795 | 23.5 / 21.3 |
| | 5400 | 5400 | 10800 | 32400 | 0 | 0 | 0 | 0 | 5250 | 25.7 / 23.3 |
| 6 + 6 + 15 + 15 | 6000 | 6000 | 15000 | 15000 | 0 | 0 | 0 | 0 | 4000 | 19.5 / 19.5 |
| | 6857 | 6857 | 17143 | 17143 | 0 | 0 | 0 | 0 | 5052 | 24.8 / 22.6 |
| 6 + 6 + 15 + 18 | 6000 | 6000 | 15000 | 18000 | 0 | 0 | 0 | 0 | 4525 | 22.2 / 21 |
| | 6800 | 6800 | 17000 | 20400 | 0 | 0 | 0 | 0 | 5327 | 26.2 / 23.8 |
| 6 + 6 + 15 + 24 | 5647 | 5647 | 14118 | 22588 | 0 | 0 | 0 | 0 | 4988 | 24.5 / 22.2 |
| | 6353 | 6353 | 15882 | 25412 | 0 | 0 | 0 | 0 | 5502 | 26.9 / 24.5 |
| 6 + 6 + 15 + 30 | 5053 | 5053 | 12632 | 25263 | 0 | 0 | 0 | 0 | 4859 | 23.8 / 21.6 |
| | 5684 | 5684 | 14211 | 28421 | 0 | 0 | 0 | 0 | 5325 | 26 / 23.7 |
| 6 + 6 + 18 + 18 | 6000 | 6000 | 18000 | 18000 | 0 | 0 | 0 | 0 | 5052 | 24.8 / 22.5 |
| | 6750 | 6750 | 20250 | 20250 | 0 | 0 | 0 | 0 | 5602 | 27.6 / 25 |
| 6 + 6 + 18 + 24 | 5333 | 5333 | 16000 | 21333 | 0 | 0 | 0 | 0 | 4923 | 24.2 / 21.9 |
| | 6000 | 6000 | 18000 | 24000 | 0 | 0 | 0 | 0 | 5400 | 26.3 / 24 |
| 6 + 6 + 18 + 30 | 4800 | 4800 | 14400 | 24000 | 0 | 0 | 0 | 0 | 4795 | 23.5 / 21.3 |
| | 5400 | 5400 | 16200 | 27000 | 0 | 0 | 0 | 0 | 5250 | 25.7 / 23.3 |
| 6 + 6 + 24 + 24 | 4800 | 4800 | 19200 | 19200 | 0 | 0 | 0 | 0 | 4795 | 23.5 / 21.3 |
| | 5400 | 5400 | 21600 | 21600 | 0 | 0 | 0 | 0 | 5250 | 25.7 / 23.3 |
| 6 + 9 + 9 + 9 | 6000 | 9000 | 9000 | 9000 | 0 | 0 | 0 | 0 | 2950 | 14.2 / 13.8 |
| | 7509 | 11264 | 11264 | 11264 | 0 | 0 | 0 | 0 | 3975 | 19.5 / 18.1 |
| 6 + 9 + 9 + 12 | 6000 | 9000 | 9000 | 12000 | 0 | 0 | 0 | 0 | 3800 | 16.3 / 16 |
| | 7500 | 11250 | 11250 | 15000 | 0 | 0 | 0 | 0 | 4502 | 22 / 20.1 |
| 6 + 9 + 9 + 15 | 6000 | 9000 | 9000 | 15000 | 0 | 0 | 0 | 0 | 4100 | 17.9 / 17.8 |
| | 7154 | 10731 | 10731 | 17885 | 0 | 0 | 0 | 0 | 4777 | 23.4 / 21.3 |

MXZ-8C48NAHZ OPERATIONAL PERFORMANCE, contd.

| Operational Performance for Indoor Unit Combinations (Unit A + Unit B + Unit C+ Unit D + Unit E + Unit F + Unit H) | Cooling Capacity Range (Btu/h) | | | | | | | | Power Usage Range (W) | Current (208/230V) |
|---|--------------------------------|--------|--------|--------|--------|--------|--------|--------|--------------------------------|-----------------------|
| | Heating Capacity Range (Btu/h) | | | | | | | | | |
| | Unit A | Unit B | Unit C | Unit D | Unit E | Unit F | Unit G | Unit H | | |
| 6 + 9 + 9 + 18 | 6000 | 9000 | 9000 | 18000 | 0 | 0 | 0 | 0 | 4000 | 19.5 / 19.5 |
| | 6857 | 10286 | 10286 | 20571 | 0 | 0 | 0 | 0 | 5052 | 24.8 / 22.6 |
| 6 + 9 + 9 + 24 | 6000 | 9000 | 9000 | 24000 | 0 | 0 | 0 | 0 | 5052 | 24.8 / 22.5 |
| | 6750 | 10125 | 10125 | 27000 | 0 | 0 | 0 | 0 | 5602 | 27.6 / 25 |
| 6 + 9 + 12 + 12 | 6000 | 9000 | 12000 | 12000 | 0 | 0 | 0 | 0 | 4100 | 17.9 / 17.8 |
| | 7154 | 10731 | 14308 | 14308 | 0 | 0 | 0 | 0 | 4777 | 23.4 / 21.3 |
| 6 + 9 + 12 + 15 | 6000 | 9000 | 12000 | 15000 | 0 | 0 | 0 | 0 | 4000 | 19.5 / 19.5 |
| | 6857 | 10286 | 13714 | 17143 | 0 | 0 | 0 | 0 | 5052 | 24.8 / 22.6 |
| 6 + 9 + 12 + 18 | 6000 | 9000 | 12000 | 18000 | 0 | 0 | 0 | 0 | 4525 | 22.2 / 21 |
| | 6800 | 10200 | 13600 | 20400 | 0 | 0 | 0 | 0 | 5327 | 26.2 / 23.8 |
| 6 + 9 + 12 + 24 | 5647 | 8471 | 11294 | 22588 | 0 | 0 | 0 | 0 | 4988 | 24.5 / 22.2 |
| | 6353 | 9529 | 12706 | 25412 | 0 | 0 | 0 | 0 | 5502 | 26.9 / 24.5 |
| 6 + 9 + 12 + 30 | 5053 | 7579 | 10105 | 25263 | 0 | 0 | 0 | 0 | 4859 | 23.8 / 21.6 |
| | 5684 | 8526 | 11368 | 28421 | 0 | 0 | 0 | 0 | 5325 | 26 / 23.7 |
| 6 + 9 + 15 + 15 | 6000 | 9000 | 15000 | 15000 | 0 | 0 | 0 | 0 | 4525 | 22.2 / 21 |
| | 6800 | 10200 | 17000 | 17000 | 0 | 0 | 0 | 0 | 5327 | 26.2 / 23.8 |
| 6 + 9 + 15 + 18 | 6000 | 9000 | 15000 | 18000 | 0 | 0 | 0 | 0 | 5052 | 24.8 / 22.5 |
| | 6750 | 10125 | 16875 | 20250 | 0 | 0 | 0 | 0 | 5602 | 27.6 / 25 |
| 6 + 9 + 15 + 24 | 5333 | 8000 | 13333 | 21333 | 0 | 0 | 0 | 0 | 4923 | 24.2 / 21.9 |
| | 6000 | 9000 | 15000 | 24000 | 0 | 0 | 0 | 0 | 5400 | 26.3 / 24 |
| 6 + 9 + 15 + 30 | 4800 | 7200 | 12000 | 24000 | 0 | 0 | 0 | 0 | 4795 | 23.5 / 21.3 |
| | 5400 | 8100 | 13500 | 27000 | 0 | 0 | 0 | 0 | 5250 | 25.7 / 23.3 |
| 6 + 9 + 18 + 18 | 5647 | 8471 | 16941 | 16941 | 0 | 0 | 0 | 0 | 4988 | 24.5 / 22.2 |
| | 6353 | 9529 | 19059 | 19059 | 0 | 0 | 0 | 0 | 5502 | 26.9 / 24.5 |
| 6 + 9 + 18 + 24 | 5053 | 7579 | 15158 | 20211 | 0 | 0 | 0 | 0 | 4859 | 23.8 / 21.6 |
| | 5684 | 8526 | 17053 | 22737 | 0 | 0 | 0 | 0 | 5325 | 26 / 23.7 |
| 6 + 12 + 12 + 12 | 6000 | 12000 | 12000 | 12000 | 0 | 0 | 0 | 0 | 4000 | 19.5 / 19.5 |
| | 6857 | 13714 | 13714 | 13714 | 0 | 0 | 0 | 0 | 5052 | 24.8 / 22.6 |
| 6 + 12 + 12 + 15 | 6000 | 12000 | 12000 | 15000 | 0 | 0 | 0 | 0 | 4525 | 22.2 / 21 |
| | 6800 | 13600 | 13600 | 17000 | 0 | 0 | 0 | 0 | 5327 | 26.2 / 23.8 |
| 6 + 12 + 12 + 18 | 6000 | 12000 | 12000 | 18000 | 0 | 0 | 0 | 0 | 5052 | 24.8 / 22.5 |
| | 6750 | 13500 | 13500 | 20250 | 0 | 0 | 0 | 0 | 5602 | 27.6 / 25 |
| 6 + 12 + 12 + 24 | 5333 | 10667 | 10667 | 21333 | 0 | 0 | 0 | 0 | 4923 | 24.2 / 21.9 |
| | 6000 | 12000 | 12000 | 24000 | 0 | 0 | 0 | 0 | 5400 | 26.3 / 24 |
| 6 + 12 + 12 + 30 | 4800 | 9600 | 9600 | 24000 | 0 | 0 | 0 | 0 | 4795 | 23.5 / 21.3 |
| | 5400 | 10800 | 10800 | 27000 | 0 | 0 | 0 | 0 | 5250 | 25.7 / 23.3 |
| 6 + 12 + 15 + 15 | 6000 | 12000 | 15000 | 15000 | 0 | 0 | 0 | 0 | 5052 | 24.8 / 22.5 |
| | 6750 | 13500 | 16875 | 16875 | 0 | 0 | 0 | 0 | 5602 | 27.6 / 25 |
| 6 + 12 + 15 + 18 | 5647 | 11294 | 14118 | 16941 | 0 | 0 | 0 | 0 | 4988 | 24.5 / 22.2 |
| | 6353 | 12706 | 15882 | 19059 | 0 | 0 | 0 | 0 | 5502 | 26.9 / 24.5 |
| 6 + 12 + 15 + 24 | 5053 | 10105 | 12632 | 20211 | 0 | 0 | 0 | 0 | 4859 | 23.8 / 21.6 |
| | 5684 | 11368 | 14211 | 22737 | 0 | 0 | 0 | 0 | 5325 | 26 / 23.7 |
| 6 + 12 + 18 + 18 | 5333 | 10667 | 16000 | 16000 | 0 | 0 | 0 | 0 | 4923 | 24.2 / 21.9 |
| | 6000 | 12000 | 18000 | 18000 | 0 | 0 | 0 | 0 | 5400 | 26.3 / 24 |
| 6 + 12 + 18 + 24 | 4800 | 9600 | 14400 | 19200 | 0 | 0 | 0 | 0 | 4795 | 23.5 / 21.3 |
| | 5400 | 10800 | 16200 | 21600 | 0 | 0 | 0 | 0 | 5250 | 25.7 / 23.3 |
| 6 + 15 + 15 + 15 | 5647 | 14118 | 14118 | 14118 | 0 | 0 | 0 | 0 | 4988 | 24.5 / 22.2 |
| | 6353 | 15882 | 15882 | 15882 | 0 | 0 | 0 | 0 | 5502 | 26.9 / 24.5 |
| 6 + 15 + 15 + 18 | 5333 | 13333 | 13333 | 16000 | 0 | 0 | 0 | 0 | 4923 | 24.2 / 21.9 |
| | 6000 | 15000 | 15000 | 18000 | 0 | 0 | 0 | 0 | 5400 | 26.3 / 24 |
| 6 + 15 + 15 + 24 | 4800 | 12000 | 12000 | 19200 | 0 | 0 | 0 | 0 | 4795 | 23.5 / 21.3 |
| | 5400 | 13500 | 13500 | 21600 | 0 | 0 | 0 | 0 | 5250 | 25.7 / 23.3 |
| 6 + 15 + 18 + 18 | 5053 | 12632 | 15158 | 15158 | 0 | 0 | 0 | 0 | 4859 | 23.8 / 21.6 |
| | 5684 | 14211 | 17053 | 17053 | 0 | 0 | 0 | 0 | 5325 | 26 / 23.7 |
| 6 + 18 + 18 + 18 | 4800 | 14400 | 14400 | 14400 | 0 | 0 | 0 | 0 | 4795 | 23.5 / 21.3 |
| | 5400 | 16200 | 16200 | 16200 | 0 | 0 | 0 | 0 | 5250 | 25.7 / 23.3 |
| 9 + 9 + 9 + 9 | 9000 | 9000 | 9000 | 9000 | 0 | 0 | 0 | 0 | 3800 | 16.3 / 16 |
| | 11250 | 11250 | 11250 | 11250 | 0 | 0 | 0 | 0 | 4502 | 22 / 20.1 |
| 9 + 9 + 9 + 12 | 9000 | 9000 | 9000 | 12000 | 0 | 0 | 0 | 0 | 4100 | 17.9 / 17.8 |
| | 10731 | 10731 | 10731 | 14308 | 0 | 0 | 0 | 0 | 4777 | 23.4 / 21.3 |

MXZ-8C48NAHZ OPERATIONAL PERFORMANCE, contd.

| Operational Performance for Indoor Unit Combinations (Unit A + Unit B + Unit C+ Unit D + Unit E + Unit F + Unit H) | Cooling Capacity Range (Btu/h) | | | | | | | | Power Usage Range (W) | Current (208/230V) |
|---|--------------------------------|--------|--------|--------|--------|--------|--------|--------|--------------------------------|-----------------------|
| | Heating Capacity Range (Btu/h) | | | | | | | | | |
| | Unit A | Unit B | Unit C | Unit D | Unit E | Unit F | Unit G | Unit H | | |
| 9 + 9 + 9 + 15 | 9000 | 9000 | 9000 | 15000 | 0 | 0 | 0 | 0 | 4000 | 19.5 / 19.5 |
| | 10286 | 10286 | 10286 | 17143 | 0 | 0 | 0 | 0 | 5052 | 24.8 / 22.6 |
| 9 + 9 + 9 + 18 | 9000 | 9000 | 9000 | 18000 | 0 | 0 | 0 | 0 | 4525 | 22.2 / 21 |
| | 10200 | 10200 | 10200 | 20400 | 0 | 0 | 0 | 0 | 5327 | 26.2 / 23.8 |
| 9 + 9 + 9 + 24 | 8471 | 8471 | 8471 | 22588 | 0 | 0 | 0 | 0 | 4988 | 24.5 / 22.2 |
| | 9529 | 9529 | 9529 | 25412 | 0 | 0 | 0 | 0 | 5502 | 26.9 / 24.5 |
| 9 + 9 + 9 + 30 | 7579 | 7579 | 7579 | 25263 | 0 | 0 | 0 | 0 | 4859 | 23.8 / 21.6 |
| | 8526 | 8526 | 8526 | 28421 | 0 | 0 | 0 | 0 | 5325 | 26 / 23.7 |
| 9 + 9 + 12 + 12 | 9000 | 9000 | 12000 | 12000 | 0 | 0 | 0 | 0 | 4000 | 19.5 / 19.5 |
| | 10286 | 10286 | 13714 | 13714 | 0 | 0 | 0 | 0 | 5052 | 24.8 / 22.6 |
| 9 + 9 + 12 + 15 | 9000 | 9000 | 12000 | 15000 | 0 | 0 | 0 | 0 | 4525 | 22.2 / 21 |
| | 10200 | 10200 | 13600 | 17000 | 0 | 0 | 0 | 0 | 5327 | 26.2 / 23.8 |
| 9 + 9 + 12 + 18 | 9000 | 9000 | 12000 | 18000 | 0 | 0 | 0 | 0 | 5052 | 24.8 / 22.5 |
| | 10125 | 10125 | 13500 | 20250 | 0 | 0 | 0 | 0 | 5602 | 27.6 / 25 |
| 9 + 9 + 12 + 24 | 8000 | 8000 | 10667 | 21333 | 0 | 0 | 0 | 0 | 4923 | 24.2 / 21.9 |
| | 9000 | 9000 | 12000 | 24000 | 0 | 0 | 0 | 0 | 5400 | 26.3 / 24 |
| 9 + 9 + 12 + 30 | 7200 | 7200 | 9600 | 24000 | 0 | 0 | 0 | 0 | 4795 | 23.5 / 21.3 |
| | 8100 | 8100 | 10800 | 27000 | 0 | 0 | 0 | 0 | 5250 | 25.7 / 23.3 |
| 9 + 9 + 15 + 15 | 9000 | 9000 | 15000 | 15000 | 0 | 0 | 0 | 0 | 5052 | 24.8 / 22.5 |
| | 10125 | 10125 | 16875 | 16875 | 0 | 0 | 0 | 0 | 5602 | 27.6 / 25 |
| 9 + 9 + 15 + 18 | 8471 | 8471 | 14118 | 16941 | 0 | 0 | 0 | 0 | 4988 | 24.5 / 22.2 |
| | 9529 | 9529 | 15882 | 19059 | 0 | 0 | 0 | 0 | 5502 | 26.9 / 24.5 |
| 9 + 9 + 15 + 24 | 7579 | 7579 | 12632 | 20211 | 0 | 0 | 0 | 0 | 4859 | 23.8 / 21.6 |
| | 8526 | 8526 | 14211 | 22737 | 0 | 0 | 0 | 0 | 5325 | 26 / 23.7 |
| 9 + 12 + 12 + 12 | 9000 | 12000 | 12000 | 12000 | 0 | 0 | 0 | 0 | 4525 | 22.2 / 21 |
| | 10200 | 13600 | 13600 | 13600 | 0 | 0 | 0 | 0 | 5327 | 26.2 / 23.8 |
| 9 + 12 + 12 + 15 | 9000 | 12000 | 12000 | 15000 | 0 | 0 | 0 | 0 | 5052 | 24.8 / 22.5 |
| | 10125 | 13500 | 13500 | 16875 | 0 | 0 | 0 | 0 | 5602 | 27.6 / 25 |
| 9 + 12 + 12 + 18 | 8471 | 11294 | 11294 | 16941 | 0 | 0 | 0 | 0 | 4988 | 24.5 / 22.2 |
| | 9529 | 12706 | 12706 | 19059 | 0 | 0 | 0 | 0 | 5502 | 26.9 / 24.5 |
| 9 + 12 + 12 + 24 | 7579 | 10105 | 10105 | 20211 | 0 | 0 | 0 | 0 | 4859 | 23.8 / 21.6 |
| | 8526 | 11368 | 11368 | 22737 | 0 | 0 | 0 | 0 | 5325 | 26 / 23.7 |
| 9 + 12 + 15 + 15 | 8471 | 11294 | 14118 | 14118 | 0 | 0 | 0 | 0 | 4988 | 24.5 / 22.2 |
| | 9529 | 12706 | 15882 | 15882 | 0 | 0 | 0 | 0 | 5502 | 26.9 / 24.5 |
| 9 + 12 + 15 + 18 | 8000 | 10667 | 13333 | 16000 | 0 | 0 | 0 | 0 | 4923 | 24.2 / 21.9 |
| | 9000 | 12000 | 15000 | 18000 | 0 | 0 | 0 | 0 | 5400 | 26.3 / 24 |
| 9 + 12 + 15 + 24 | 7200 | 9600 | 12000 | 19200 | 0 | 0 | 0 | 0 | 4795 | 23.5 / 21.3 |
| | 8100 | 10800 | 13500 | 21600 | 0 | 0 | 0 | 0 | 5250 | 25.7 / 23.3 |
| 9 + 12 + 18 + 18 | 7579 | 10105 | 15158 | 15158 | 0 | 0 | 0 | 0 | 4859 | 23.8 / 21.6 |
| | 8526 | 11368 | 17053 | 17053 | 0 | 0 | 0 | 0 | 5325 | 26 / 23.7 |
| 9 + 15 + 15 + 15 | 8000 | 13333 | 13333 | 13333 | 0 | 0 | 0 | 0 | 4923 | 24.2 / 21.9 |
| | 9000 | 15000 | 15000 | 15000 | 0 | 0 | 0 | 0 | 5400 | 26.3 / 24 |
| 9 + 15 + 15 + 18 | 7579 | 12632 | 12632 | 15158 | 0 | 0 | 0 | 0 | 4859 | 23.8 / 21.6 |
| | 8526 | 14211 | 14211 | 17053 | 0 | 0 | 0 | 0 | 5325 | 26 / 23.7 |
| 12 + 12 + 12 + 12 | 12000 | 12000 | 12000 | 12000 | 0 | 0 | 0 | 0 | 5052 | 24.8 / 22.5 |
| | 13500 | 13500 | 13500 | 13500 | 0 | 0 | 0 | 0 | 5602 | 27.6 / 25 |
| 12 + 12 + 12 + 15 | 11294 | 11294 | 11294 | 14118 | 0 | 0 | 0 | 0 | 4988 | 24.5 / 22.2 |
| | 12706 | 12706 | 12706 | 15882 | 0 | 0 | 0 | 0 | 5502 | 26.9 / 24.5 |
| 12 + 12 + 12 + 18 | 10667 | 10667 | 10667 | 16000 | 0 | 0 | 0 | 0 | 4923 | 24.2 / 21.9 |
| | 12000 | 12000 | 12000 | 18000 | 0 | 0 | 0 | 0 | 5400 | 26.3 / 24 |
| 12 + 12 + 12 + 24 | 9600 | 9600 | 9600 | 19200 | 0 | 0 | 0 | 0 | 4795 | 23.5 / 21.3 |
| | 10800 | 10800 | 10800 | 21600 | 0 | 0 | 0 | 0 | 5250 | 25.7 / 23.3 |
| 12 + 12 + 15 + 15 | 10667 | 10667 | 13333 | 13333 | 0 | 0 | 0 | 0 | 4923 | 24.2 / 21.9 |
| | 12000 | 12000 | 15000 | 15000 | 0 | 0 | 0 | 0 | 5400 | 26.3 / 24 |
| 12 + 12 + 15 + 18 | 10105 | 10105 | 12632 | 15158 | 0 | 0 | 0 | 0 | 4859 | 23.8 / 21.6 |
| | 11368 | 11368 | 14211 | 17053 | 0 | 0 | 0 | 0 | 5325 | 26 / 23.7 |
| 12 + 15 + 15 + 15 | 10105 | 12632 | 12632 | 12632 | 0 | 0 | 0 | 0 | 4859 | 23.8 / 21.6 |
| | 11368 | 14211 | 14211 | 14211 | 0 | 0 | 0 | 0 | 5325 | 26 / 23.7 |
| 12 + 15 + 15 + 18 | 9600 | 12000 | 12000 | 14400 | 0 | 0 | 0 | 0 | 4795 | 23.5 / 21.3 |
| | 10800 | 13500 | 13500 | 16200 | 0 | 0 | 0 | 0 | 5250 | 25.7 / 23.3 |

MXZ-8C48NAHZ OPERATIONAL PERFORMANCE, contd.

| Operational Performance for Indoor Unit Combinations (Unit A + Unit B + Unit C + Unit D + Unit E + Unit F + Unit H) | Cooling Capacity Range (Btu/h) | | | | | | | | Power Usage Range (W) | Current (208/230V) |
|--|--------------------------------|--------|--------|--------|--------|--------|--------|--------|--------------------------------|-----------------------|
| | Heating Capacity Range (Btu/h) | | | | | | | | | |
| | Unit A | Unit B | Unit C | Unit D | Unit E | Unit F | Unit G | Unit H | | |
| 15 + 15 + 15 + 15 | 12000 | 12000 | 12000 | 12000 | 0 | 0 | 0 | 0 | 4795 | 23.5 / 21.3 |
| | 13500 | 13500 | 13500 | 13500 | 0 | 0 | 0 | 0 | 5250 | 25.7 / 23.3 |
| 6 + 6 + 6 + 6 + 6 | 6000 | 6000 | 6000 | 6000 | 6000 | 0 | 0 | 0 | 2500 | 12 / 11.5 |
| | 7500 | 7500 | 7500 | 7500 | 7500 | 0 | 0 | 0 | 3450 | 17 / 16.1 |
| 6 + 6 + 6 + 6 + 9 | 6000 | 6000 | 6000 | 6000 | 9000 | 0 | 0 | 0 | 2950 | 14.2 / 13.8 |
| | 7509 | 7509 | 7509 | 7509 | 11264 | 0 | 0 | 0 | 3975 | 19.5 / 18.1 |
| 6 + 6 + 6 + 6 + 12 | 6000 | 6000 | 6000 | 6000 | 12000 | 0 | 0 | 0 | 3800 | 16.3 / 16 |
| | 7500 | 7500 | 7500 | 7500 | 15000 | 0 | 0 | 0 | 4502 | 22 / 20.1 |
| 6 + 6 + 6 + 6 + 15 | 6000 | 6000 | 6000 | 6000 | 15000 | 0 | 0 | 0 | 4100 | 17.9 / 17.8 |
| | 7154 | 7154 | 7154 | 7154 | 17885 | 0 | 0 | 0 | 4777 | 23.4 / 21.3 |
| 6 + 6 + 6 + 6 + 18 | 6000 | 6000 | 6000 | 6000 | 18000 | 0 | 0 | 0 | 4000 | 19.5 / 19.5 |
| | 6857 | 6857 | 6857 | 6857 | 20571 | 0 | 0 | 0 | 5052 | 24.8 / 22.6 |
| 6 + 6 + 6 + 6 + 24 | 6000 | 6000 | 6000 | 6000 | 24000 | 0 | 0 | 0 | 5052 | 24.8 / 22.5 |
| | 6750 | 6750 | 6750 | 6750 | 27000 | 0 | 0 | 0 | 5602 | 27.6 / 25 |
| 6 + 6 + 6 + 6 + 30 | 5333 | 5333 | 5333 | 5333 | 26667 | 0 | 0 | 0 | 4923 | 24.2 / 21.9 |
| | 6000 | 6000 | 6000 | 6000 | 30000 | 0 | 0 | 0 | 5400 | 26.3 / 24 |
| 6 + 6 + 6 + 6 + 36 | 4800 | 4800 | 4800 | 4800 | 28800 | 0 | 0 | 0 | 4795 | 23.5 / 21.3 |
| | 5400 | 5400 | 5400 | 5400 | 32400 | 0 | 0 | 0 | 5250 | 25.7 / 23.3 |
| 6 + 6 + 6 + 9 + 9 | 6000 | 6000 | 6000 | 9000 | 9000 | 0 | 0 | 0 | 3800 | 16.3 / 16 |
| | 7500 | 7500 | 7500 | 11250 | 11250 | 0 | 0 | 0 | 4502 | 22 / 20.1 |
| 6 + 6 + 6 + 9 + 12 | 6000 | 6000 | 6000 | 9000 | 12000 | 0 | 0 | 0 | 4100 | 17.9 / 17.8 |
| | 7154 | 7154 | 7154 | 10731 | 14308 | 0 | 0 | 0 | 4777 | 23.4 / 21.3 |
| 6 + 6 + 6 + 9 + 15 | 6000 | 6000 | 6000 | 9000 | 15000 | 0 | 0 | 0 | 4000 | 19.5 / 19.5 |
| | 6857 | 6857 | 6857 | 10286 | 17143 | 0 | 0 | 0 | 5052 | 24.8 / 22.6 |
| 6 + 6 + 6 + 9 + 18 | 6000 | 6000 | 6000 | 9000 | 18000 | 0 | 0 | 0 | 4525 | 22.2 / 21 |
| | 6800 | 6800 | 6800 | 10200 | 20400 | 0 | 0 | 0 | 5327 | 26.2 / 23.8 |
| 6 + 6 + 6 + 9 + 24 | 5647 | 5647 | 5647 | 8471 | 22588 | 0 | 0 | 0 | 4988 | 24.5 / 22.2 |
| | 6353 | 6353 | 6353 | 9529 | 25412 | 0 | 0 | 0 | 5502 | 26.9 / 24.5 |
| 6 + 6 + 6 + 9 + 30 | 5053 | 5053 | 5053 | 7579 | 25263 | 0 | 0 | 0 | 4859 | 23.8 / 21.6 |
| | 5684 | 5684 | 5684 | 8526 | 28421 | 0 | 0 | 0 | 5325 | 26 / 23.7 |
| 6 + 6 + 6 + 12 + 12 | 6000 | 6000 | 6000 | 12000 | 12000 | 0 | 0 | 0 | 4000 | 19.5 / 19.5 |
| | 6857 | 6857 | 6857 | 13714 | 13714 | 0 | 0 | 0 | 5052 | 24.8 / 22.6 |
| 6 + 6 + 6 + 12 + 15 | 6000 | 6000 | 6000 | 12000 | 15000 | 0 | 0 | 0 | 4525 | 22.2 / 21 |
| | 6800 | 6800 | 6800 | 13600 | 17000 | 0 | 0 | 0 | 5327 | 26.2 / 23.8 |
| 6 + 6 + 6 + 12 + 18 | 6000 | 6000 | 6000 | 12000 | 18000 | 0 | 0 | 0 | 5052 | 24.8 / 22.5 |
| | 6750 | 6750 | 6750 | 13500 | 20250 | 0 | 0 | 0 | 5602 | 27.6 / 25 |
| 6 + 6 + 6 + 12 + 24 | 5333 | 5333 | 5333 | 10667 | 21333 | 0 | 0 | 0 | 4923 | 24.2 / 21.9 |
| | 6000 | 6000 | 6000 | 12000 | 24000 | 0 | 0 | 0 | 5400 | 26.3 / 24 |
| 6 + 6 + 6 + 12 + 30 | 4800 | 4800 | 4800 | 9600 | 24000 | 0 | 0 | 0 | 4795 | 23.5 / 21.3 |
| | 5400 | 5400 | 5400 | 10800 | 27000 | 0 | 0 | 0 | 5250 | 25.7 / 23.3 |
| 6 + 6 + 6 + 15 + 15 | 6000 | 6000 | 6000 | 15000 | 15000 | 0 | 0 | 0 | 5052 | 24.8 / 22.5 |
| | 6750 | 6750 | 6750 | 16875 | 16875 | 0 | 0 | 0 | 5602 | 27.6 / 25 |
| 6 + 6 + 6 + 15 + 18 | 5647 | 5647 | 5647 | 14118 | 16941 | 0 | 0 | 0 | 4988 | 24.5 / 22.2 |
| | 6353 | 6353 | 6353 | 15882 | 19059 | 0 | 0 | 0 | 5502 | 26.9 / 24.5 |
| 6 + 6 + 6 + 15 + 24 | 5053 | 5053 | 5053 | 12632 | 20211 | 0 | 0 | 0 | 4859 | 23.8 / 21.6 |
| | 5684 | 5684 | 5684 | 14211 | 22737 | 0 | 0 | 0 | 5325 | 26 / 23.7 |
| 6 + 6 + 6 + 18 + 18 | 5333 | 5333 | 5333 | 16000 | 16000 | 0 | 0 | 0 | 4923 | 24.2 / 21.9 |
| | 6000 | 6000 | 6000 | 18000 | 18000 | 0 | 0 | 0 | 5400 | 26.3 / 24 |
| 6 + 6 + 6 + 18 + 24 | 4800 | 4800 | 4800 | 14400 | 19200 | 0 | 0 | 0 | 4795 | 23.5 / 21.3 |
| | 5400 | 5400 | 5400 | 16200 | 21600 | 0 | 0 | 0 | 5250 | 25.7 / 23.3 |
| 6 + 6 + 9 + 9 + 9 | 6000 | 6000 | 9000 | 9000 | 9000 | 0 | 0 | 0 | 4100 | 17.9 / 17.8 |
| | 7154 | 7154 | 10731 | 10731 | 10731 | 0 | 0 | 0 | 4777 | 23.4 / 21.3 |
| 6 + 6 + 9 + 9 + 12 | 6000 | 6000 | 9000 | 9000 | 12000 | 0 | 0 | 0 | 4000 | 19.5 / 19.5 |
| | 6857 | 6857 | 10286 | 10286 | 13714 | 0 | 0 | 0 | 5052 | 24.8 / 22.6 |
| 6 + 6 + 9 + 9 + 15 | 6000 | 6000 | 9000 | 9000 | 15000 | 0 | 0 | 0 | 4525 | 22.2 / 21 |
| | 6800 | 6800 | 10200 | 10200 | 17000 | 0 | 0 | 0 | 5327 | 26.2 / 23.8 |
| 6 + 6 + 9 + 9 + 18 | 6000 | 6000 | 9000 | 9000 | 18000 | 0 | 0 | 0 | 5052 | 24.8 / 22.5 |
| | 6750 | 6750 | 10125 | 10125 | 20250 | 0 | 0 | 0 | 5602 | 27.6 / 25 |
| 6 + 6 + 9 + 9 + 24 | 5333 | 5333 | 8000 | 8000 | 21333 | 0 | 0 | 0 | 4923 | 24.2 / 21.9 |
| | 6000 | 6000 | 9000 | 9000 | 24000 | 0 | 0 | 0 | 5400 | 26.3 / 24 |

MXZ-8C48NAHZ OPERATIONAL PERFORMANCE, contd.

| Operational Performance for Indoor Unit Combinations (Unit A + Unit B + Unit C+ Unit D + Unit E + Unit F + Unit H) | Cooling Capacity Range (Btu/h) | | | | | | | | Power Usage Range (W) | Current (208/230V) |
|---|--------------------------------|--------|--------|--------|--------|--------|--------|--------|--------------------------------|-----------------------|
| | Heating Capacity Range (Btu/h) | | | | | | | | | |
| | Unit A | Unit B | Unit C | Unit D | Unit E | Unit F | Unit G | Unit H | | |
| 6 + 6 + 9 + 9 + 30 | 4800 | 4800 | 7200 | 7200 | 24000 | 0 | 0 | 0 | 4795 | 23.5 / 21.3 |
| | 5400 | 5400 | 8100 | 8100 | 27000 | 0 | 0 | 0 | 5250 | 25.7 / 23.3 |
| 6 + 6 + 9 + 12 + 12 | 6000 | 6000 | 9000 | 12000 | 12000 | 0 | 0 | 0 | 4525 | 22.2 / 21 |
| | 6800 | 6800 | 10200 | 13600 | 13600 | 0 | 0 | 0 | 5327 | 26.2 / 23.8 |
| 6 + 6 + 9 + 12 + 15 | 6000 | 6000 | 9000 | 12000 | 15000 | 0 | 0 | 0 | 5052 | 24.8 / 22.5 |
| | 6750 | 6750 | 10125 | 13500 | 16875 | 0 | 0 | 0 | 5602 | 27.6 / 25 |
| 6 + 6 + 9 + 12 + 18 | 5647 | 5647 | 8471 | 11294 | 16941 | 0 | 0 | 0 | 4988 | 24.5 / 22.2 |
| | 6353 | 6353 | 9529 | 12706 | 19059 | 0 | 0 | 0 | 5502 | 26.9 / 24.5 |
| 6 + 6 + 9 + 12 + 24 | 5053 | 5053 | 7579 | 10105 | 20211 | 0 | 0 | 0 | 4859 | 23.8 / 21.6 |
| | 5684 | 5684 | 8526 | 11368 | 22737 | 0 | 0 | 0 | 5325 | 26 / 23.7 |
| 6 + 6 + 9 + 15 + 15 | 5647 | 5647 | 8471 | 14118 | 14118 | 0 | 0 | 0 | 4988 | 24.5 / 22.2 |
| | 6353 | 6353 | 9529 | 15882 | 15882 | 0 | 0 | 0 | 5502 | 26.9 / 24.5 |
| 6 + 6 + 9 + 15 + 18 | 5333 | 5333 | 8000 | 13333 | 16000 | 0 | 0 | 0 | 4923 | 24.2 / 21.9 |
| | 6000 | 6000 | 9000 | 15000 | 18000 | 0 | 0 | 0 | 5400 | 26.3 / 24 |
| 6 + 6 + 9 + 15 + 24 | 4800 | 4800 | 7200 | 12000 | 19200 | 0 | 0 | 0 | 4795 | 23.5 / 21.3 |
| | 5400 | 5400 | 8100 | 13500 | 21600 | 0 | 0 | 0 | 5250 | 25.7 / 23.3 |
| 6 + 6 + 9 + 18 + 18 | 5053 | 5053 | 7579 | 15158 | 15158 | 0 | 0 | 0 | 4859 | 23.8 / 21.6 |
| | 5684 | 5684 | 8526 | 17053 | 17053 | 0 | 0 | 0 | 5325 | 26 / 23.7 |
| 6 + 6 + 12 + 12 + 12 | 6000 | 6000 | 12000 | 12000 | 12000 | 0 | 0 | 0 | 5052 | 24.8 / 22.5 |
| | 6750 | 6750 | 13500 | 13500 | 13500 | 0 | 0 | 0 | 5602 | 27.6 / 25 |
| 6 + 6 + 12 + 12 + 15 | 5647 | 5647 | 11294 | 11294 | 14118 | 0 | 0 | 0 | 4988 | 24.5 / 22.2 |
| | 6353 | 6353 | 12706 | 12706 | 15882 | 0 | 0 | 0 | 5502 | 26.9 / 24.5 |
| 6 + 6 + 12 + 12 + 18 | 5333 | 5333 | 10667 | 10667 | 16000 | 0 | 0 | 0 | 4923 | 24.2 / 21.9 |
| | 6000 | 6000 | 12000 | 12000 | 18000 | 0 | 0 | 0 | 5400 | 26.3 / 24 |
| 6 + 6 + 12 + 12 + 24 | 4800 | 4800 | 9600 | 9600 | 19200 | 0 | 0 | 0 | 4795 | 23.5 / 21.3 |
| | 5400 | 5400 | 10800 | 10800 | 21600 | 0 | 0 | 0 | 5250 | 25.7 / 23.3 |
| 6 + 6 + 12 + 15 + 15 | 5333 | 5333 | 10667 | 13333 | 13333 | 0 | 0 | 0 | 4923 | 24.2 / 21.9 |
| | 6000 | 6000 | 12000 | 15000 | 15000 | 0 | 0 | 0 | 5400 | 26.3 / 24 |
| 6 + 6 + 12 + 15 + 18 | 5053 | 5053 | 10105 | 12632 | 15158 | 0 | 0 | 0 | 4859 | 23.8 / 21.6 |
| | 5684 | 5684 | 11368 | 14211 | 17053 | 0 | 0 | 0 | 5325 | 26 / 23.7 |
| 6 + 6 + 12 + 18 + 18 | 4800 | 4800 | 9600 | 14400 | 14400 | 0 | 0 | 0 | 4795 | 23.5 / 21.3 |
| | 5400 | 5400 | 10800 | 16200 | 16200 | 0 | 0 | 0 | 5250 | 25.7 / 23.3 |
| 6 + 6 + 15 + 15 + 15 | 5053 | 5053 | 12632 | 12632 | 12632 | 0 | 0 | 0 | 4859 | 23.8 / 21.6 |
| | 5684 | 5684 | 14211 | 14211 | 14211 | 0 | 0 | 0 | 5325 | 26 / 23.7 |
| 6 + 6 + 15 + 15 + 18 | 4800 | 4800 | 12000 | 12000 | 14400 | 0 | 0 | 0 | 4795 | 23.5 / 21.3 |
| | 5400 | 5400 | 13500 | 13500 | 16200 | 0 | 0 | 0 | 5250 | 25.7 / 23.3 |
| 6 + 9 + 9 + 9 + 9 | 6000 | 9000 | 9000 | 9000 | 9000 | 0 | 0 | 0 | 4000 | 19.5 / 19.5 |
| | 6857 | 10286 | 10286 | 10286 | 10286 | 0 | 0 | 0 | 5052 | 24.8 / 22.6 |
| 6 + 9 + 9 + 9 + 12 | 6000 | 9000 | 9000 | 9000 | 12000 | 0 | 0 | 0 | 4525 | 22.2 / 21 |
| | 6800 | 10200 | 10200 | 10200 | 13600 | 0 | 0 | 0 | 5327 | 26.2 / 23.8 |
| 6 + 9 + 9 + 9 + 15 | 6000 | 9000 | 9000 | 9000 | 15000 | 0 | 0 | 0 | 5052 | 24.8 / 22.5 |
| | 6750 | 10125 | 10125 | 10125 | 16875 | 0 | 0 | 0 | 5602 | 27.6 / 25 |
| 6 + 9 + 9 + 9 + 18 | 5647 | 8471 | 8471 | 8471 | 16941 | 0 | 0 | 0 | 4988 | 24.5 / 22.2 |
| | 6353 | 9529 | 9529 | 9529 | 19059 | 0 | 0 | 0 | 5502 | 26.9 / 24.5 |
| 6 + 9 + 9 + 9 + 24 | 5053 | 7579 | 7579 | 7579 | 20211 | 0 | 0 | 0 | 4859 | 23.8 / 21.6 |
| | 5684 | 8526 | 8526 | 8526 | 22737 | 0 | 0 | 0 | 5325 | 26 / 23.7 |
| 6 + 9 + 9 + 12 + 12 | 6000 | 9000 | 9000 | 12000 | 12000 | 0 | 0 | 0 | 5052 | 24.8 / 22.5 |
| | 6750 | 10125 | 10125 | 13500 | 13500 | 0 | 0 | 0 | 5602 | 27.6 / 25 |
| 6 + 9 + 9 + 12 + 15 | 5647 | 8471 | 8471 | 11294 | 14118 | 0 | 0 | 0 | 4988 | 24.5 / 22.2 |
| | 6353 | 9529 | 9529 | 12706 | 15882 | 0 | 0 | 0 | 5502 | 26.9 / 24.5 |
| 6 + 9 + 9 + 12 + 18 | 5333 | 8000 | 8000 | 10667 | 16000 | 0 | 0 | 0 | 4923 | 24.2 / 21.9 |
| | 6000 | 9000 | 9000 | 12000 | 18000 | 0 | 0 | 0 | 5400 | 26.3 / 24 |
| 6 + 9 + 9 + 12 + 24 | 4800 | 7200 | 7200 | 9600 | 19200 | 0 | 0 | 0 | 4795 | 23.5 / 21.3 |
| | 5400 | 8100 | 8100 | 10800 | 21600 | 0 | 0 | 0 | 5250 | 25.7 / 23.3 |
| 6 + 9 + 9 + 15 + 15 | 5333 | 8000 | 8000 | 13333 | 13333 | 0 | 0 | 0 | 4923 | 24.2 / 21.9 |
| | 6000 | 9000 | 9000 | 15000 | 15000 | 0 | 0 | 0 | 5400 | 26.3 / 24 |
| 6 + 9 + 9 + 15 + 18 | 5053 | 7579 | 7579 | 12632 | 15158 | 0 | 0 | 0 | 4859 | 23.8 / 21.6 |
| | 5684 | 8526 | 8526 | 14211 | 17053 | 0 | 0 | 0 | 5325 | 26 / 23.7 |
| 6 + 9 + 9 + 18 + 18 | 4800 | 7200 | 7200 | 14400 | 14400 | 0 | 0 | 0 | 4795 | 23.5 / 21.3 |
| | 5400 | 8100 | 8100 | 16200 | 16200 | 0 | 0 | 0 | 5250 | 25.7 / 23.3 |

MXZ-8C48NAHZ OPERATIONAL PERFORMANCE, contd.

| Operational Performance for Indoor Unit Combinations (Unit A + Unit B + Unit C+ Unit D + Unit E + Unit F + Unit H) | Cooling Capacity Range (Btu/h) | | | | | | | | Power Usage Range (W) | Current (208/230V) |
|---|--------------------------------|--------|--------|--------|--------|--------|--------|--------|--------------------------------|-----------------------|
| | Heating Capacity Range (Btu/h) | | | | | | | | | |
| | Unit A | Unit B | Unit C | Unit D | Unit E | Unit F | Unit G | Unit H | | |
| 6 + 9 + 12 + 12 + 12 | 5647 | 8471 | 11294 | 11294 | 11294 | 0 | 0 | 0 | 4988 | 24.5 / 22.2 |
| | 6353 | 9529 | 12706 | 12706 | 12706 | 0 | 0 | 0 | 5502 | 26.9 / 24.5 |
| 6 + 9 + 12 + 12 + 15 | 5333 | 8000 | 10667 | 10667 | 13333 | 0 | 0 | 0 | 4923 | 24.2 / 21.9 |
| | 6000 | 9000 | 12000 | 12000 | 15000 | 0 | 0 | 0 | 5400 | 26.3 / 24 |
| 6 + 9 + 12 + 12 + 18 | 5053 | 7579 | 10105 | 10105 | 15158 | 0 | 0 | 0 | 4859 | 23.8 / 21.6 |
| | 5684 | 8526 | 11368 | 11368 | 17053 | 0 | 0 | 0 | 5325 | 26 / 23.7 |
| 6 + 9 + 15 + 15 + 15 | 4800 | 7200 | 12000 | 12000 | 12000 | 0 | 0 | 0 | 4795 | 23.5 / 21.3 |
| | 5400 | 8100 | 13500 | 13500 | 13500 | 0 | 0 | 0 | 5250 | 25.7 / 23.3 |
| 6 + 12 + 12 + 12 + 12 | 5333 | 10667 | 10667 | 10667 | 10667 | 0 | 0 | 0 | 4923 | 24.2 / 21.9 |
| | 6000 | 12000 | 12000 | 12000 | 12000 | 0 | 0 | 0 | 5400 | 26.3 / 24 |
| 6 + 12 + 12 + 12 + 15 | 5053 | 10105 | 10105 | 10105 | 12632 | 0 | 0 | 0 | 4859 | 23.8 / 21.6 |
| | 5684 | 11368 | 11368 | 11368 | 14211 | 0 | 0 | 0 | 5325 | 26 / 23.7 |
| 6 + 12 + 12 + 12 + 18 | 4800 | 9600 | 9600 | 9600 | 14400 | 0 | 0 | 0 | 4795 | 23.5 / 21.3 |
| | 5400 | 10800 | 10800 | 10800 | 16200 | 0 | 0 | 0 | 5250 | 25.7 / 23.3 |
| 6 + 12 + 12 + 15 + 15 | 4800 | 9600 | 9600 | 12000 | 12000 | 0 | 0 | 0 | 4795 | 23.5 / 21.3 |
| | 5400 | 10800 | 10800 | 13500 | 13500 | 0 | 0 | 0 | 5250 | 25.7 / 23.3 |
| 9 + 9 + 9 + 9 + 9 | 9000 | 9000 | 9000 | 9000 | 9000 | 0 | 0 | 0 | 4525 | 22.2 / 21 |
| | 10200 | 10200 | 10200 | 10200 | 10200 | 0 | 0 | 0 | 5327 | 26.2 / 23.8 |
| 9 + 9 + 9 + 9 + 12 | 9000 | 9000 | 9000 | 9000 | 12000 | 0 | 0 | 0 | 5052 | 24.8 / 22.5 |
| | 10125 | 10125 | 10125 | 10125 | 13500 | 0 | 0 | 0 | 5602 | 27.6 / 25 |
| 9 + 9 + 9 + 9 + 15 | 8471 | 8471 | 8471 | 8471 | 14118 | 0 | 0 | 0 | 4988 | 24.5 / 22.2 |
| | 9529 | 9529 | 9529 | 9529 | 15882 | 0 | 0 | 0 | 5502 | 26.9 / 24.5 |
| 9 + 9 + 9 + 9 + 18 | 8000 | 8000 | 8000 | 8000 | 16000 | 0 | 0 | 0 | 4923 | 24.2 / 21.9 |
| | 9000 | 9000 | 9000 | 9000 | 18000 | 0 | 0 | 0 | 5400 | 26.3 / 24 |
| 9 + 9 + 9 + 9 + 24 | 7200 | 7200 | 7200 | 7200 | 19200 | 0 | 0 | 0 | 4795 | 23.5 / 21.3 |
| | 8100 | 8100 | 8100 | 8100 | 21600 | 0 | 0 | 0 | 5250 | 25.7 / 23.3 |
| 9 + 9 + 9 + 12 + 12 | 8471 | 8471 | 8471 | 11294 | 11294 | 0 | 0 | 0 | 4988 | 24.5 / 22.2 |
| | 9529 | 9529 | 9529 | 12706 | 12706 | 0 | 0 | 0 | 5502 | 26.9 / 24.5 |
| 9 + 9 + 9 + 12 + 15 | 8000 | 8000 | 8000 | 10667 | 13333 | 0 | 0 | 0 | 4923 | 24.2 / 21.9 |
| | 9000 | 9000 | 9000 | 12000 | 15000 | 0 | 0 | 0 | 5400 | 26.3 / 24 |
| 9 + 9 + 9 + 12 + 18 | 7579 | 7579 | 7579 | 10105 | 15158 | 0 | 0 | 0 | 4859 | 23.8 / 21.6 |
| | 8526 | 8526 | 8526 | 11368 | 17053 | 0 | 0 | 0 | 5325 | 26 / 23.7 |
| 9 + 9 + 9 + 15 + 15 | 7579 | 7579 | 7579 | 12632 | 12632 | 0 | 0 | 0 | 4859 | 23.8 / 21.6 |
| | 8526 | 8526 | 8526 | 14211 | 14211 | 0 | 0 | 0 | 5325 | 26 / 23.7 |
| 9 + 9 + 9 + 15 + 18 | 7200 | 7200 | 7200 | 12000 | 14400 | 0 | 0 | 0 | 4795 | 23.5 / 21.3 |
| | 8100 | 8100 | 8100 | 13500 | 16200 | 0 | 0 | 0 | 5250 | 25.7 / 23.3 |
| 9 + 9 + 12 + 12 + 12 | 8000 | 8000 | 10667 | 10667 | 10667 | 0 | 0 | 0 | 4923 | 24.2 / 21.9 |
| | 9000 | 9000 | 12000 | 12000 | 12000 | 0 | 0 | 0 | 5400 | 26.3 / 24 |
| 9 + 9 + 12 + 12 + 15 | 7579 | 7579 | 10105 | 10105 | 12632 | 0 | 0 | 0 | 4859 | 23.8 / 21.6 |
| | 8526 | 8526 | 11368 | 11368 | 14211 | 0 | 0 | 0 | 5325 | 26 / 23.7 |
| 9 + 9 + 12 + 12 + 18 | 7200 | 7200 | 9600 | 9600 | 14400 | 0 | 0 | 0 | 4795 | 23.5 / 21.3 |
| | 8100 | 8100 | 10800 | 10800 | 16200 | 0 | 0 | 0 | 5250 | 25.7 / 23.3 |
| 9 + 9 + 12 + 15 + 15 | 7200 | 7200 | 9600 | 12000 | 12000 | 0 | 0 | 0 | 4795 | 23.5 / 21.3 |
| | 8100 | 8100 | 10800 | 13500 | 13500 | 0 | 0 | 0 | 5250 | 25.7 / 23.3 |
| 9 + 12 + 12 + 12 + 12 | 7579 | 10105 | 10105 | 10105 | 10105 | 0 | 0 | 0 | 4859 | 23.8 / 21.6 |
| | 8526 | 11368 | 11368 | 11368 | 11368 | 0 | 0 | 0 | 5325 | 26 / 23.7 |
| 9 + 12 + 12 + 12 + 15 | 7200 | 9600 | 9600 | 9600 | 12000 | 0 | 0 | 0 | 4795 | 23.5 / 21.3 |
| | 8100 | 10800 | 10800 | 10800 | 13500 | 0 | 0 | 0 | 5250 | 25.7 / 23.3 |
| 12 + 12 + 12 + 12 + 12 | 9600 | 9600 | 9600 | 9600 | 9600 | 0 | 0 | 0 | 4795 | 23.5 / 21.3 |
| | 10800 | 10800 | 10800 | 10800 | 10800 | 0 | 0 | 0 | 5250 | 25.7 / 23.3 |
| 6 + 6 + 6 + 6 + 6 + 6 | 6000 | 6000 | 6000 | 6000 | 6000 | 6000 | 0 | 0 | 3800 | 16.3 / 16 |
| | 7500 | 7500 | 7500 | 7500 | 7500 | 7500 | 0 | 0 | 4502 | 22 / 20.1 |
| 6 + 6 + 6 + 6 + 6 + 9 | 6000 | 6000 | 6000 | 6000 | 6000 | 9000 | 0 | 0 | 4100 | 17.9 / 17.8 |
| | 7154 | 7154 | 7154 | 7154 | 7154 | 10731 | 0 | 0 | 4777 | 23.4 / 21.3 |
| 6 + 6 + 6 + 6 + 6 + 12 | 6000 | 6000 | 6000 | 6000 | 6000 | 12000 | 0 | 0 | 4000 | 19.5 / 19.5 |
| | 6857 | 6857 | 6857 | 6857 | 6857 | 13714 | 0 | 0 | 5052 | 24.8 / 22.6 |
| 6 + 6 + 6 + 6 + 6 + 15 | 6000 | 6000 | 6000 | 6000 | 6000 | 15000 | 0 | 0 | 4525 | 22.2 / 21 |
| | 6800 | 6800 | 6800 | 6800 | 6800 | 17000 | 0 | 0 | 5327 | 26.2 / 23.8 |
| 6 + 6 + 6 + 6 + 6 + 18 | 6000 | 6000 | 6000 | 6000 | 6000 | 18000 | 0 | 0 | 5052 | 24.8 / 22.5 |
| | 6750 | 6750 | 6750 | 6750 | 6750 | 20250 | 0 | 0 | 5602 | 27.6 / 25 |

MXZ-8C48NAHZ OPERATIONAL PERFORMANCE, contd.

| Operational Performance for Indoor Unit Combinations (Unit A + Unit B + Unit C + Unit D + Unit E + Unit F + Unit H) | Cooling Capacity Range (Btu/h) | | | | | | | | Power Usage Range (W) | Current (208/230V) |
|--|--------------------------------|--------|--------|--------|--------|--------|--------|--------|--------------------------------|-----------------------|
| | Heating Capacity Range (Btu/h) | | | | | | | | | |
| | Unit A | Unit B | Unit C | Unit D | Unit E | Unit F | Unit G | Unit H | | |
| 6 + 6 + 6 + 6 + 6 + 24 | 5333 | 5333 | 5333 | 5333 | 5333 | 21333 | 0 | 0 | 4923 | 24.2 / 21.9 |
| | 6000 | 6000 | 6000 | 6000 | 6000 | 24000 | 0 | 0 | 5400 | 26.3 / 24 |
| 6 + 6 + 6 + 6 + 6 + 30 | 4800 | 4800 | 4800 | 4800 | 4800 | 24000 | 0 | 0 | 4795 | 23.5 / 21.3 |
| | 5400 | 5400 | 5400 | 5400 | 5400 | 27000 | 0 | 0 | 5250 | 25.7 / 23.3 |
| 6 + 6 + 6 + 6 + 9 + 9 | 6000 | 6000 | 6000 | 6000 | 9000 | 9000 | 0 | 0 | 4000 | 19.5 / 19.5 |
| | 6857 | 6857 | 6857 | 6857 | 10286 | 10286 | 0 | 0 | 5052 | 24.8 / 22.6 |
| 6 + 6 + 6 + 6 + 9 + 12 | 6000 | 6000 | 6000 | 6000 | 9000 | 12000 | 0 | 0 | 4525 | 22.2 / 21 |
| | 6800 | 6800 | 6800 | 6800 | 10200 | 13600 | 0 | 0 | 5327 | 26.2 / 23.8 |
| 6 + 6 + 6 + 6 + 9 + 15 | 6000 | 6000 | 6000 | 6000 | 9000 | 15000 | 0 | 0 | 5052 | 24.8 / 22.5 |
| | 6750 | 6750 | 6750 | 6750 | 10125 | 16875 | 0 | 0 | 5602 | 27.6 / 25 |
| 6 + 6 + 6 + 6 + 9 + 18 | 5647 | 5647 | 5647 | 5647 | 8471 | 16941 | 0 | 0 | 4988 | 24.5 / 22.2 |
| | 6353 | 6353 | 6353 | 6353 | 9529 | 19059 | 0 | 0 | 5502 | 26.9 / 24.5 |
| 6 + 6 + 6 + 6 + 9 + 24 | 5053 | 5053 | 5053 | 5053 | 7579 | 20211 | 0 | 0 | 4859 | 23.8 / 21.6 |
| | 5684 | 5684 | 5684 | 5684 | 8526 | 22737 | 0 | 0 | 5325 | 26 / 23.7 |
| 6 + 6 + 6 + 6 + 12 + 12 | 6000 | 6000 | 6000 | 6000 | 12000 | 12000 | 0 | 0 | 5052 | 24.8 / 22.5 |
| | 6750 | 6750 | 6750 | 6750 | 13500 | 13500 | 0 | 0 | 5602 | 27.6 / 25 |
| 6 + 6 + 6 + 6 + 12 + 15 | 5647 | 5647 | 5647 | 5647 | 11294 | 14118 | 0 | 0 | 4988 | 24.5 / 22.2 |
| | 6353 | 6353 | 6353 | 6353 | 12706 | 15882 | 0 | 0 | 5502 | 26.9 / 24.5 |
| 6 + 6 + 6 + 6 + 12 + 18 | 5333 | 5333 | 5333 | 5333 | 10667 | 16000 | 0 | 0 | 4923 | 24.2 / 21.9 |
| | 6000 | 6000 | 6000 | 6000 | 12000 | 18000 | 0 | 0 | 5400 | 26.3 / 24 |
| 6 + 6 + 6 + 6 + 12 + 24 | 4800 | 4800 | 4800 | 4800 | 9600 | 19200 | 0 | 0 | 4795 | 23.5 / 21.3 |
| | 5400 | 5400 | 5400 | 5400 | 10800 | 21600 | 0 | 0 | 5250 | 25.7 / 23.3 |
| 6 + 6 + 6 + 6 + 15 + 15 | 5333 | 5333 | 5333 | 5333 | 13333 | 13333 | 0 | 0 | 4923 | 24.2 / 21.9 |
| | 6000 | 6000 | 6000 | 6000 | 15000 | 15000 | 0 | 0 | 5400 | 26.3 / 24 |
| 6 + 6 + 6 + 6 + 15 + 18 | 5053 | 5053 | 5053 | 5053 | 12632 | 15158 | 0 | 0 | 4859 | 23.8 / 21.6 |
| | 5684 | 5684 | 5684 | 5684 | 14211 | 17053 | 0 | 0 | 5325 | 26 / 23.7 |
| 6 + 6 + 6 + 6 + 18 + 18 | 4800 | 4800 | 4800 | 4800 | 14400 | 14400 | 0 | 0 | 4795 | 23.5 / 21.3 |
| | 5400 | 5400 | 5400 | 5400 | 16200 | 16200 | 0 | 0 | 5250 | 25.7 / 23.3 |
| 6 + 6 + 6 + 9 + 9 + 9 | 6000 | 6000 | 6000 | 9000 | 9000 | 9000 | 0 | 0 | 4525 | 22.2 / 21 |
| | 6800 | 6800 | 6800 | 10200 | 10200 | 10200 | 0 | 0 | 5327 | 26.2 / 23.8 |
| 6 + 6 + 6 + 9 + 9 + 12 | 6000 | 6000 | 6000 | 9000 | 9000 | 12000 | 0 | 0 | 5052 | 24.8 / 22.5 |
| | 6750 | 6750 | 6750 | 10125 | 10125 | 13500 | 0 | 0 | 5602 | 27.6 / 25 |
| 6 + 6 + 6 + 9 + 9 + 15 | 5647 | 5647 | 5647 | 8471 | 8471 | 14118 | 0 | 0 | 4988 | 24.5 / 22.2 |
| | 6353 | 6353 | 6353 | 9529 | 9529 | 15882 | 0 | 0 | 5502 | 26.9 / 24.5 |
| 6 + 6 + 6 + 9 + 9 + 18 | 5333 | 5333 | 5333 | 8000 | 8000 | 16000 | 0 | 0 | 4923 | 24.2 / 21.9 |
| | 6000 | 6000 | 6000 | 9000 | 9000 | 18000 | 0 | 0 | 5400 | 26.3 / 24 |
| 6 + 6 + 6 + 9 + 9 + 24 | 4800 | 4800 | 4800 | 7200 | 7200 | 19200 | 0 | 0 | 4795 | 23.5 / 21.3 |
| | 5400 | 5400 | 5400 | 8100 | 8100 | 21600 | 0 | 0 | 5250 | 25.7 / 23.3 |
| 6 + 6 + 6 + 9 + 12 + 12 | 5647 | 5647 | 5647 | 8471 | 11294 | 11294 | 0 | 0 | 4988 | 24.5 / 22.2 |
| | 6353 | 6353 | 6353 | 9529 | 12706 | 12706 | 0 | 0 | 5502 | 26.9 / 24.5 |
| 6 + 6 + 6 + 9 + 12 + 15 | 5333 | 5333 | 5333 | 8000 | 10667 | 13333 | 0 | 0 | 4923 | 24.2 / 21.9 |
| | 6000 | 6000 | 6000 | 9000 | 12000 | 15000 | 0 | 0 | 5400 | 26.3 / 24 |
| 6 + 6 + 6 + 9 + 12 + 18 | 5053 | 5053 | 5053 | 7579 | 10105 | 15158 | 0 | 0 | 4859 | 23.8 / 21.6 |
| | 5684 | 5684 | 5684 | 8526 | 11368 | 17053 | 0 | 0 | 5325 | 26 / 23.7 |
| 6 + 6 + 6 + 9 + 15 + 15 | 5053 | 5053 | 5053 | 7579 | 12632 | 12632 | 0 | 0 | 4859 | 23.8 / 21.6 |
| | 5684 | 5684 | 5684 | 8526 | 14211 | 14211 | 0 | 0 | 5325 | 26 / 23.7 |
| 6 + 6 + 6 + 9 + 15 + 18 | 4800 | 4800 | 4800 | 7200 | 12000 | 14400 | 0 | 0 | 4795 | 23.5 / 21.3 |
| | 5400 | 5400 | 5400 | 8100 | 13500 | 16200 | 0 | 0 | 5250 | 25.7 / 23.3 |
| 6 + 6 + 6 + 12 + 12 + 12 | 5333 | 5333 | 5333 | 10667 | 10667 | 10667 | 0 | 0 | 4923 | 24.2 / 21.9 |
| | 6000 | 6000 | 6000 | 12000 | 12000 | 12000 | 0 | 0 | 5400 | 26.3 / 24 |
| 6 + 6 + 6 + 12 + 12 + 15 | 5053 | 5053 | 5053 | 10105 | 10105 | 12632 | 0 | 0 | 4859 | 23.8 / 21.6 |
| | 5684 | 5684 | 5684 | 11368 | 11368 | 14211 | 0 | 0 | 5325 | 26 / 23.7 |
| 6 + 6 + 6 + 12 + 12 + 18 | 4800 | 4800 | 4800 | 9600 | 9600 | 14400 | 0 | 0 | 4795 | 23.5 / 21.3 |
| | 5400 | 5400 | 5400 | 10800 | 10800 | 16200 | 0 | 0 | 5250 | 25.7 / 23.3 |
| 6 + 6 + 6 + 12 + 15 + 15 | 4800 | 4800 | 4800 | 9600 | 12000 | 12000 | 0 | 0 | 4795 | 23.5 / 21.3 |
| | 5400 | 5400 | 5400 | 10800 | 13500 | 13500 | 0 | 0 | 5250 | 25.7 / 23.3 |
| 6 + 6 + 9 + 9 + 9 + 9 | 6000 | 6000 | 9000 | 9000 | 9000 | 9000 | 0 | 0 | 5052 | 24.8 / 22.5 |
| | 6750 | 6750 | 10125 | 10125 | 10125 | 10125 | 0 | 0 | 5602 | 27.6 / 25 |
| 6 + 6 + 9 + 9 + 9 + 12 | 5647 | 5647 | 8471 | 8471 | 8471 | 11294 | 0 | 0 | 4988 | 24.5 / 22.2 |
| | 6353 | 6353 | 9529 | 9529 | 9529 | 12706 | 0 | 0 | 5502 | 26.9 / 24.5 |

MXZ-8C48NAHZ OPERATIONAL PERFORMANCE, contd.

| Operational Performance for Indoor Unit Combinations (Unit A + Unit B + Unit C + Unit D + Unit E + Unit F + Unit H) | Cooling Capacity Range (Btu/h) | | | | | | | | Power Usage Range (W) | Current (208/230V) |
|--|--------------------------------|--------|--------|--------|--------|--------|--------|--------|--------------------------------|-----------------------|
| | Heating Capacity Range (Btu/h) | | | | | | | | | |
| | Unit A | Unit B | Unit C | Unit D | Unit E | Unit F | Unit G | Unit H | | |
| 6 + 6 + 9 + 9 + 9 + 15 | 5333 | 5333 | 8000 | 8000 | 8000 | 13333 | 0 | 0 | 4923 | 24.2 / 21.9 |
| | 6000 | 6000 | 9000 | 9000 | 9000 | 15000 | 0 | 0 | 5400 | 26.3 / 24 |
| 6 + 6 + 9 + 9 + 9 + 18 | 5053 | 5053 | 7579 | 7579 | 7579 | 15158 | 0 | 0 | 4859 | 23.8 / 21.6 |
| | 5684 | 5684 | 8526 | 8526 | 8526 | 17053 | 0 | 0 | 5325 | 26 / 23.7 |
| 6 + 6 + 9 + 9 + 12 + 12 | 5333 | 5333 | 8000 | 8000 | 10667 | 10667 | 0 | 0 | 4923 | 24.2 / 21.9 |
| | 6000 | 6000 | 9000 | 9000 | 12000 | 12000 | 0 | 0 | 5400 | 26.3 / 24 |
| 6 + 6 + 9 + 9 + 12 + 15 | 5053 | 5053 | 7579 | 7579 | 10105 | 12632 | 0 | 0 | 4859 | 23.8 / 21.6 |
| | 5684 | 5684 | 8526 | 8526 | 11368 | 14211 | 0 | 0 | 5325 | 26 / 23.7 |
| 6 + 6 + 9 + 9 + 12 + 18 | 4800 | 4800 | 7200 | 7200 | 9600 | 14400 | 0 | 0 | 4795 | 23.5 / 21.3 |
| | 5400 | 5400 | 8100 | 8100 | 10800 | 16200 | 0 | 0 | 5250 | 25.7 / 23.3 |
| 6 + 6 + 9 + 9 + 15 + 15 | 4800 | 4800 | 7200 | 7200 | 12000 | 12000 | 0 | 0 | 4795 | 23.5 / 21.3 |
| | 5400 | 5400 | 8100 | 8100 | 13500 | 13500 | 0 | 0 | 5250 | 25.7 / 23.3 |
| 6 + 6 + 9 + 12 + 12 + 12 | 5053 | 5053 | 7579 | 10105 | 10105 | 10105 | 0 | 0 | 4859 | 23.8 / 21.6 |
| | 5684 | 5684 | 8526 | 11368 | 11368 | 11368 | 0 | 0 | 5325 | 26 / 23.7 |
| 6 + 6 + 9 + 12 + 12 + 15 | 4800 | 4800 | 7200 | 9600 | 9600 | 12000 | 0 | 0 | 4795 | 23.5 / 21.3 |
| | 5400 | 5400 | 8100 | 10800 | 10800 | 13500 | 0 | 0 | 5250 | 25.7 / 23.3 |
| 6 + 6 + 12 + 12 + 12 + 12 | 4800 | 4800 | 9600 | 9600 | 9600 | 9600 | 0 | 0 | 4795 | 23.5 / 21.3 |
| | 5400 | 5400 | 10800 | 10800 | 10800 | 10800 | 0 | 0 | 5250 | 25.7 / 23.3 |
| 6 + 9 + 9 + 9 + 9 + 9 | 5647 | 8471 | 8471 | 8471 | 8471 | 8471 | 0 | 0 | 4988 | 24.5 / 22.2 |
| | 6353 | 9529 | 9529 | 9529 | 9529 | 9529 | 0 | 0 | 5502 | 26.9 / 24.5 |
| 6 + 9 + 9 + 9 + 9 + 12 | 5333 | 8000 | 8000 | 8000 | 8000 | 10667 | 0 | 0 | 4923 | 24.2 / 21.9 |
| | 6000 | 9000 | 9000 | 9000 | 9000 | 12000 | 0 | 0 | 5400 | 26.3 / 24 |
| 6 + 9 + 9 + 9 + 9 + 15 | 5053 | 7579 | 7579 | 7579 | 7579 | 12632 | 0 | 0 | 4859 | 23.8 / 21.6 |
| | 5684 | 8526 | 8526 | 8526 | 8526 | 14211 | 0 | 0 | 5325 | 26 / 23.7 |
| 6 + 9 + 9 + 9 + 9 + 18 | 4800 | 7200 | 7200 | 7200 | 7200 | 14400 | 0 | 0 | 4795 | 23.5 / 21.3 |
| | 5400 | 8100 | 8100 | 8100 | 8100 | 16200 | 0 | 0 | 5250 | 25.7 / 23.3 |
| 6 + 9 + 9 + 9 + 12 + 12 | 5053 | 7579 | 7579 | 7579 | 10105 | 10105 | 0 | 0 | 4859 | 23.8 / 21.6 |
| | 5684 | 8526 | 8526 | 8526 | 11368 | 11368 | 0 | 0 | 5325 | 26 / 23.7 |
| 6 + 9 + 9 + 9 + 12 + 15 | 4800 | 7200 | 7200 | 7200 | 9600 | 12000 | 0 | 0 | 4795 | 23.5 / 21.3 |
| | 5400 | 8100 | 8100 | 8100 | 10800 | 13500 | 0 | 0 | 5250 | 25.7 / 23.3 |
| 6 + 9 + 9 + 12 + 12 + 12 | 4800 | 7200 | 7200 | 9600 | 9600 | 9600 | 0 | 0 | 4795 | 23.5 / 21.3 |
| | 5400 | 8100 | 8100 | 10800 | 10800 | 10800 | 0 | 0 | 5250 | 25.7 / 23.3 |
| 9 + 9 + 9 + 9 + 9 + 9 | 8000 | 8000 | 8000 | 8000 | 8000 | 8000 | 0 | 0 | 4923 | 24.2 / 21.9 |
| | 9000 | 9000 | 9000 | 9000 | 9000 | 9000 | 0 | 0 | 5400 | 26.3 / 24 |
| 9 + 9 + 9 + 9 + 9 + 12 | 7579 | 7579 | 7579 | 7579 | 7579 | 10105 | 0 | 0 | 4859 | 23.8 / 21.6 |
| | 8526 | 8526 | 8526 | 8526 | 8526 | 11368 | 0 | 0 | 5325 | 26 / 23.7 |
| 9 + 9 + 9 + 9 + 9 + 15 | 7200 | 7200 | 7200 | 7200 | 7200 | 12000 | 0 | 0 | 4795 | 23.5 / 21.3 |
| | 8100 | 8100 | 8100 | 8100 | 8100 | 13500 | 0 | 0 | 5250 | 25.7 / 23.3 |
| 9 + 9 + 9 + 9 + 12 + 12 | 7200 | 7200 | 7200 | 7200 | 9600 | 9600 | 0 | 0 | 4795 | 23.5 / 21.3 |
| | 8100 | 8100 | 8100 | 8100 | 10800 | 10800 | 0 | 0 | 5250 | 25.7 / 23.3 |
| 6 + 6 + 6 + 6 + 6 + 6 + 6 | 6000 | 6000 | 6000 | 6000 | 6000 | 6000 | 6000 | 0 | 4000 | 19.5 / 19.5 |
| | 6857 | 6857 | 6857 | 6857 | 6857 | 6857 | 6857 | 6857 | 0 | 5052 |
| 6 + 6 + 6 + 6 + 6 + 6 + 12 | 6000 | 6000 | 6000 | 6000 | 6000 | 6000 | 12000 | 0 | 5052 | 24.8 / 22.5 |
| | 6750 | 6750 | 6750 | 6750 | 6750 | 6750 | 13500 | 0 | 5602 | 27.6 / 25 |
| 6 + 6 + 6 + 6 + 6 + 6 + 15 | 5647 | 5647 | 5647 | 5647 | 5647 | 5647 | 14118 | 0 | 4988 | 24.5 / 22.2 |
| | 6353 | 6353 | 6353 | 6353 | 6353 | 6353 | 15882 | 0 | 5502 | 26.9 / 24.5 |
| 6 + 6 + 6 + 6 + 6 + 6 + 18 | 5333 | 5333 | 5333 | 5333 | 5333 | 5333 | 16000 | 0 | 4923 | 24.2 / 21.9 |
| | 6000 | 6000 | 6000 | 6000 | 6000 | 6000 | 18000 | 0 | 5400 | 26.3 / 24 |
| 6 + 6 + 6 + 6 + 6 + 6 + 24 | 4800 | 4800 | 4800 | 4800 | 4800 | 4800 | 19200 | 0 | 4795 | 23.5 / 21.3 |
| | 5400 | 5400 | 5400 | 5400 | 5400 | 5400 | 21600 | 0 | 5250 | 25.7 / 23.3 |
| 6 + 6 + 6 + 6 + 6 + 9 + 9 | 6000 | 6000 | 6000 | 6000 | 6000 | 9000 | 9000 | 0 | 5052 | 24.8 / 22.5 |
| | 6750 | 6750 | 6750 | 6750 | 6750 | 10125 | 10125 | 0 | 5602 | 27.6 / 25 |
| 6 + 6 + 6 + 6 + 6 + 9 + 12 | 5647 | 5647 | 5647 | 5647 | 5647 | 8471 | 11294 | 0 | 4988 | 24.5 / 22.2 |
| | 6353 | 6353 | 6353 | 6353 | 6353 | 9529 | 12706 | 0 | 5502 | 26.9 / 24.5 |
| 6 + 6 + 6 + 6 + 6 + 9 + 15 | 5333 | 5333 | 5333 | 5333 | 5333 | 8000 | 13333 | 0 | 4923 | 24.2 / 21.9 |
| | 6000 | 6000 | 6000 | 6000 | 6000 | 9000 | 15000 | 0 | 5400 | 26.3 / 24 |
| 6 + 6 + 6 + 6 + 6 + 9 + 18 | 5053 | 5053 | 5053 | 5053 | 5053 | 7579 | 15158 | 0 | 4859 | 23.8 / 21.6 |
| | 5684 | 5684 | 5684 | 5684 | 5684 | 8526 | 17053 | 0 | 5325 | 26 / 23.7 |
| 6 + 6 + 6 + 6 + 6 + 12 + 12 | 5333 | 5333 | 5333 | 5333 | 5333 | 10667 | 10667 | 0 | 4923 | 24.2 / 21.9 |
| | 6000 | 6000 | 6000 | 6000 | 6000 | 12000 | 12000 | 0 | 5400 | 26.3 / 24 |

MXZ-8C48NAHZ OPERATIONAL PERFORMANCE, contd.

| Operational Performance for Indoor Unit Combinations (Unit A + Unit B + Unit C + Unit D + Unit E + Unit F + Unit H) | Cooling Capacity Range (Btu/h) | | | | | | | | Power Usage Range (W) | Current (208/230V) |
|--|--------------------------------|--------|--------|--------|--------|--------|--------|--------|-----------------------|--------------------|
| | Heating Capacity Range (Btu/h) | | | | | | | | | |
| | Unit A | Unit B | Unit C | Unit D | Unit E | Unit F | Unit G | Unit H | | |
| 6 + 6 + 6 + 6 + 6 + 12 + 15 | 5053 | 5053 | 5053 | 5053 | 5053 | 10105 | 12632 | 0 | 4859 | 23.8 / 21.6 |
| | 5684 | 5684 | 5684 | 5684 | 5684 | 11368 | 14211 | 0 | 5325 | 26 / 23.7 |
| 6 + 6 + 6 + 6 + 6 + 12 + 18 | 4800 | 4800 | 4800 | 4800 | 4800 | 9600 | 14400 | 0 | 4795 | 23.5 / 21.3 |
| | 5400 | 5400 | 5400 | 5400 | 5400 | 10800 | 16200 | 0 | 5250 | 25.7 / 23.3 |
| 6 + 6 + 6 + 6 + 6 + 15 + 15 | 4800 | 4800 | 4800 | 4800 | 4800 | 12000 | 12000 | 0 | 4795 | 23.5 / 21.3 |
| | 5400 | 5400 | 5400 | 5400 | 5400 | 13500 | 13500 | 0 | 5250 | 25.7 / 23.3 |
| 6 + 6 + 6 + 6 + 9 + 9 + 9 | 5647 | 5647 | 5647 | 5647 | 8471 | 8471 | 8471 | 0 | 4988 | 24.5 / 22.2 |
| | 6353 | 6353 | 6353 | 6353 | 9529 | 9529 | 9529 | 0 | 5502 | 26.9 / 24.5 |
| 6 + 6 + 6 + 6 + 9 + 9 + 12 | 5333 | 5333 | 5333 | 5333 | 8000 | 8000 | 10667 | 0 | 4923 | 24.2 / 21.9 |
| | 6000 | 6000 | 6000 | 6000 | 9000 | 9000 | 12000 | 0 | 5400 | 26.3 / 24 |
| 6 + 6 + 6 + 6 + 9 + 9 + 15 | 5053 | 5053 | 5053 | 5053 | 7579 | 7579 | 12632 | 0 | 4859 | 23.8 / 21.6 |
| | 5684 | 5684 | 5684 | 5684 | 8526 | 8526 | 14211 | 0 | 5325 | 26 / 23.7 |
| 6 + 6 + 6 + 6 + 9 + 9 + 18 | 4800 | 4800 | 4800 | 4800 | 7200 | 7200 | 14400 | 0 | 4795 | 23.5 / 21.3 |
| | 5400 | 5400 | 5400 | 5400 | 8100 | 8100 | 16200 | 0 | 5250 | 25.7 / 23.3 |
| 6 + 6 + 6 + 6 + 9 + 12 + 12 | 5053 | 5053 | 5053 | 5053 | 7579 | 10105 | 10105 | 0 | 4859 | 23.8 / 21.6 |
| | 5684 | 5684 | 5684 | 5684 | 8526 | 11368 | 11368 | 0 | 5325 | 26 / 23.7 |
| 6 + 6 + 6 + 6 + 9 + 12 + 15 | 4800 | 4800 | 4800 | 4800 | 7200 | 9600 | 12000 | 0 | 4795 | 23.5 / 21.3 |
| | 5400 | 5400 | 5400 | 5400 | 8100 | 10800 | 13500 | 0 | 5250 | 25.7 / 23.3 |
| 6 + 6 + 6 + 6 + 12 + 12 + 12 | 4800 | 4800 | 4800 | 4800 | 9600 | 9600 | 9600 | 0 | 4795 | 23.5 / 21.3 |
| | 5400 | 5400 | 5400 | 5400 | 10800 | 10800 | 10800 | 0 | 5250 | 25.7 / 23.3 |
| 6 + 6 + 6 + 9 + 9 + 9 + 9 | 5333 | 5333 | 5333 | 8000 | 8000 | 8000 | 8000 | 0 | 4923 | 24.2 / 21.9 |
| | 6000 | 6000 | 6000 | 9000 | 9000 | 9000 | 9000 | 0 | 5400 | 26.3 / 24 |
| 6 + 6 + 6 + 9 + 9 + 9 + 12 | 5053 | 5053 | 5053 | 7579 | 7579 | 7579 | 10105 | 0 | 4859 | 23.8 / 21.6 |
| | 5684 | 5684 | 5684 | 8526 | 8526 | 8526 | 11368 | 0 | 5325 | 26 / 23.7 |
| 6 + 6 + 6 + 9 + 9 + 9 + 15 | 4800 | 4800 | 4800 | 7200 | 7200 | 7200 | 12000 | 0 | 4795 | 23.5 / 21.3 |
| | 5400 | 5400 | 5400 | 8100 | 8100 | 8100 | 13500 | 0 | 5250 | 25.7 / 23.3 |
| 6 + 6 + 6 + 9 + 9 + 12 + 12 | 4800 | 4800 | 4800 | 7200 | 7200 | 9600 | 9600 | 0 | 4795 | 23.5 / 21.3 |
| | 5400 | 5400 | 5400 | 8100 | 8100 | 10800 | 10800 | 0 | 5250 | 25.7 / 23.3 |
| 6 + 6 + 9 + 9 + 9 + 9 + 9 | 5053 | 5053 | 7579 | 7579 | 7579 | 7579 | 7579 | 0 | 4859 | 23.8 / 21.6 |
| | 5684 | 5684 | 8526 | 8526 | 8526 | 8526 | 8526 | 0 | 5325 | 26 / 23.7 |
| 6 + 6 + 9 + 9 + 9 + 9 + 12 | 4800 | 4800 | 7200 | 7200 | 7200 | 7200 | 9600 | 0 | 4795 | 23.5 / 21.3 |
| | 5400 | 5400 | 8100 | 8100 | 8100 | 8100 | 10800 | 0 | 5250 | 25.7 / 23.3 |
| 6 + 9 + 9 + 9 + 9 + 9 + 9 | 4800 | 7200 | 7200 | 7200 | 7200 | 7200 | 7200 | 0 | 4795 | 23.5 / 21.3 |
| | 5400 | 8100 | 8100 | 8100 | 8100 | 8100 | 8100 | 0 | 5250 | 25.7 / 23.3 |
| 6 + 6 + 6 + 6 + 6 + 6 + 6 + 6 | 6000 | 6000 | 6000 | 6000 | 6000 | 6000 | 6000 | 6000 | 5052 | 24.8 / 22.5 |
| | 6750 | 6750 | 6750 | 6750 | 6750 | 6750 | 6750 | 6750 | 5602 | 27.6 / 25 |
| 6 + 6 + 6 + 6 + 6 + 6 + 6 + 9 | 5647 | 5647 | 5647 | 5647 | 5647 | 5647 | 5647 | 8471 | 4988 | 24.5 / 22.2 |
| | 6353 | 6353 | 6353 | 6353 | 6353 | 6353 | 6353 | 9529 | 5502 | 26.9 / 24.5 |
| 6 + 6 + 6 + 6 + 6 + 6 + 6 + 12 | 5333 | 5333 | 5333 | 5333 | 5333 | 5333 | 5333 | 10667 | 4923 | 24.2 / 21.9 |
| | 6000 | 6000 | 6000 | 6000 | 6000 | 6000 | 6000 | 12000 | 5400 | 26.3 / 24 |
| 6 + 6 + 6 + 6 + 6 + 6 + 6 + 15 | 5053 | 5053 | 5053 | 5053 | 5053 | 5053 | 5053 | 12632 | 4859 | 23.8 / 21.6 |
| | 5684 | 5684 | 5684 | 5684 | 5684 | 5684 | 5684 | 14211 | 5325 | 26 / 23.7 |
| 6 + 6 + 6 + 6 + 6 + 6 + 6 + 18 | 4800 | 4800 | 4800 | 4800 | 4800 | 4800 | 4800 | 14400 | 4795 | 23.5 / 21.3 |
| | 5400 | 5400 | 5400 | 5400 | 5400 | 5400 | 5400 | 16200 | 5250 | 25.7 / 23.3 |
| 6 + 6 + 6 + 6 + 6 + 6 + 9 + 9 | 5333 | 5333 | 5333 | 5333 | 5333 | 5333 | 8000 | 8000 | 4923 | 24.2 / 21.9 |
| | 6000 | 6000 | 6000 | 6000 | 6000 | 6000 | 9000 | 9000 | 5400 | 26.3 / 24 |
| 6 + 6 + 6 + 6 + 6 + 6 + 9 + 12 | 5053 | 5053 | 5053 | 5053 | 5053 | 5053 | 7579 | 10105 | 4859 | 23.8 / 21.6 |
| | 5684 | 5684 | 5684 | 5684 | 5684 | 5684 | 8526 | 11368 | 5325 | 26 / 23.7 |
| 6 + 6 + 6 + 6 + 6 + 6 + 9 + 15 | 4800 | 4800 | 4800 | 4800 | 4800 | 4800 | 7200 | 12000 | 4795 | 23.5 / 21.3 |
| | 5400 | 5400 | 5400 | 5400 | 5400 | 5400 | 8100 | 13500 | 5250 | 25.7 / 23.3 |
| 6 + 6 + 6 + 6 + 6 + 6 + 12 + 12 | 4800 | 4800 | 4800 | 4800 | 4800 | 4800 | 9600 | 9600 | 4795 | 23.5 / 21.3 |
| | 5400 | 5400 | 5400 | 5400 | 5400 | 5400 | 10800 | 10800 | 5250 | 25.7 / 23.3 |
| 6 + 6 + 6 + 6 + 6 + 9 + 9 + 9 | 5053 | 5053 | 5053 | 5053 | 5053 | 7579 | 7579 | 7579 | 4859 | 23.8 / 21.6 |
| | 5684 | 5684 | 5684 | 5684 | 5684 | 8526 | 8526 | 8526 | 5325 | 26 / 23.7 |
| 6 + 6 + 6 + 6 + 6 + 9 + 9 + 12 | 4800 | 4800 | 4800 | 4800 | 4800 | 7200 | 9600 | 9600 | 4795 | 23.5 / 21.3 |
| | 5400 | 5400 | 5400 | 5400 | 5400 | 8100 | 8100 | 10800 | 5250 | 25.7 / 23.3 |
| 6 + 6 + 6 + 6 + 9 + 9 + 9 + 9 | 4800 | 4800 | 4800 | 4800 | 7200 | 7200 | 7200 | 7200 | 4795 | 23.5 / 21.3 |
| | 5400 | 5400 | 5400 | 5400 | 8100 | 8100 | 8100 | 8100 | 5250 | 25.7 / 23.3 |

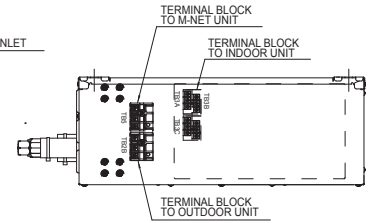
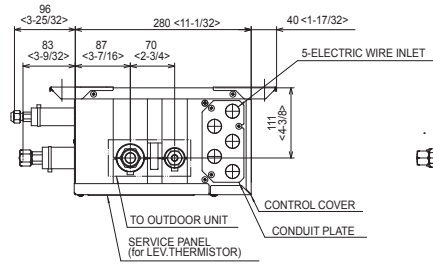
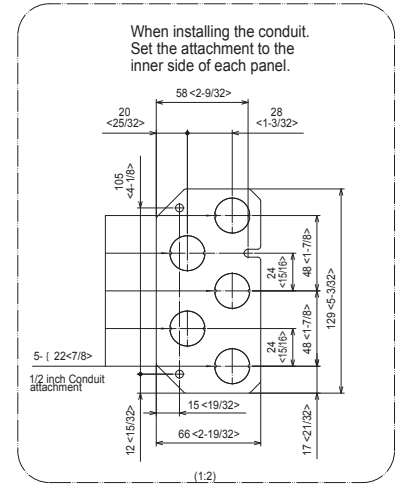
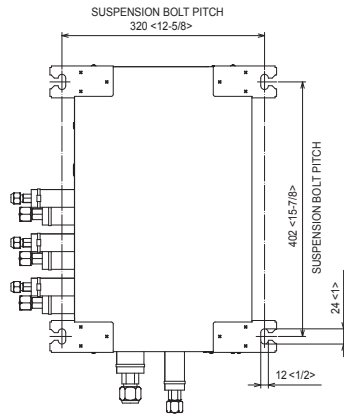
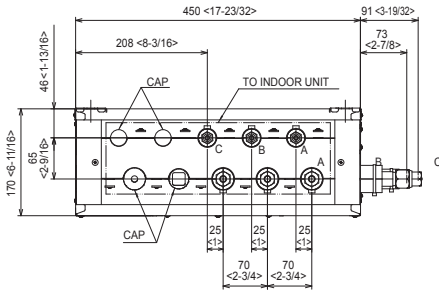
DIMENSIONS: PAC-MKA30BC AND PAC-MKA50BC BRANCH BOXES

PAC-MKA30BC

Unit: mm <in>

SUSPENSION BOLT : W3/8(M10)
REFRIGERANT PIPE FLARED CONNECTION

| | A | B | C | | TO OUTDOOR UNIT |
|-------------|------|------|------|--|-----------------|
| LIQUID PIPE | 1/4F | 1/4F | 1/4F | | 3/8F |
| GAS PIPE | 3/8F | 3/8F | 3/8F | | 5/8F |



PAC-MKA50BC

Unit: mm <in>

SUSPENSION BOLT : W3/8(M10)
REFRIGERANT PIPE FLARED CONNECTION

| | A | B | C | D | E | TO OUTDOOR UNIT |
|-------------|------|------|------|------|------|-----------------|
| LIQUID PIPE | 1/4F | 1/4F | 1/4F | 1/4F | 1/4F | 3/8F |
| GAS PIPE | 3/8F | 3/8F | 3/8F | 3/8F | 1/2F | 5/8F |

