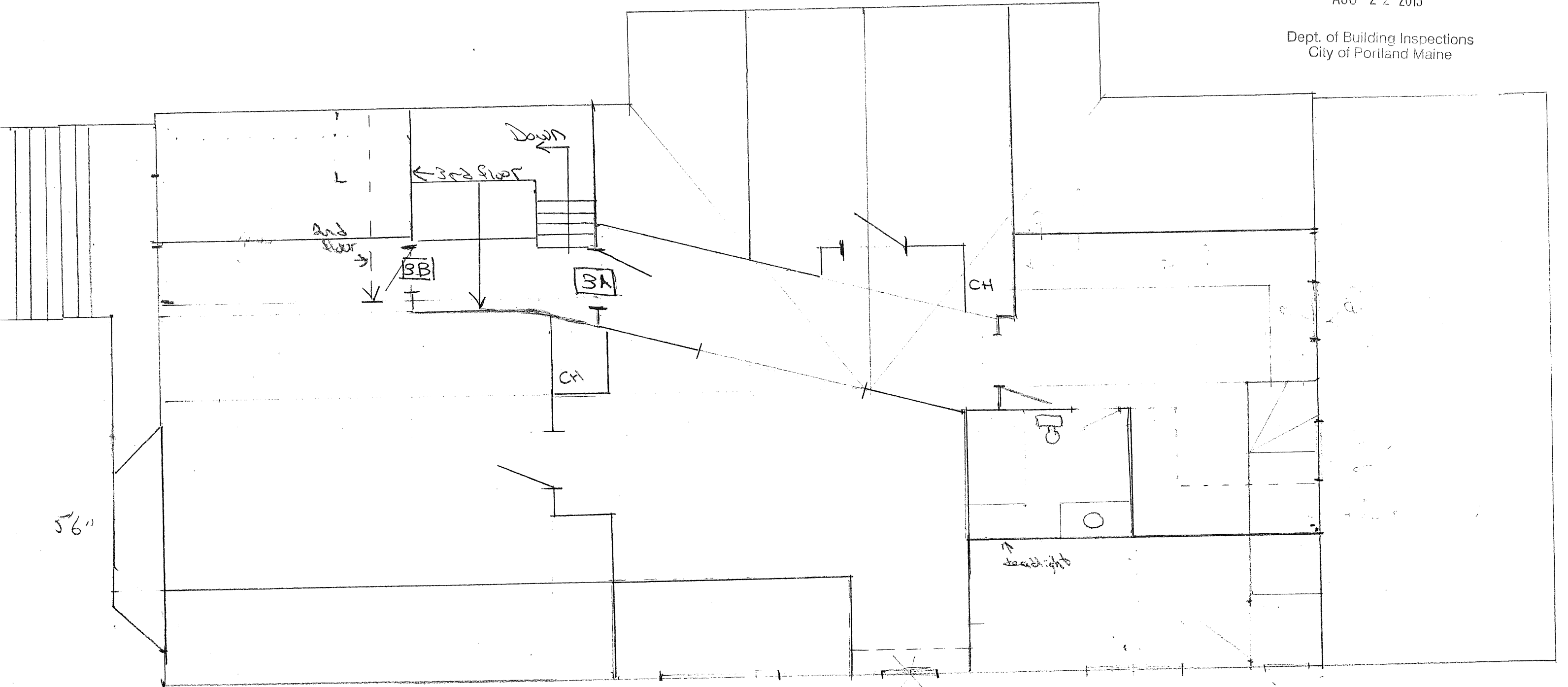


RECEIVED

AUG 22 2013

Dept. of Building Inspections
City of Portland Maine



3A - new replacement
fire door

3B - 2 layers of 5/8"
"fire rock"

literately plan book

72 William St.
3rd floor
2/18/13

1/4" = 10"

5'6"

2nd floor

Down

3' 5/8"

3B

3A

CH

CH

FP

↑ headlight