

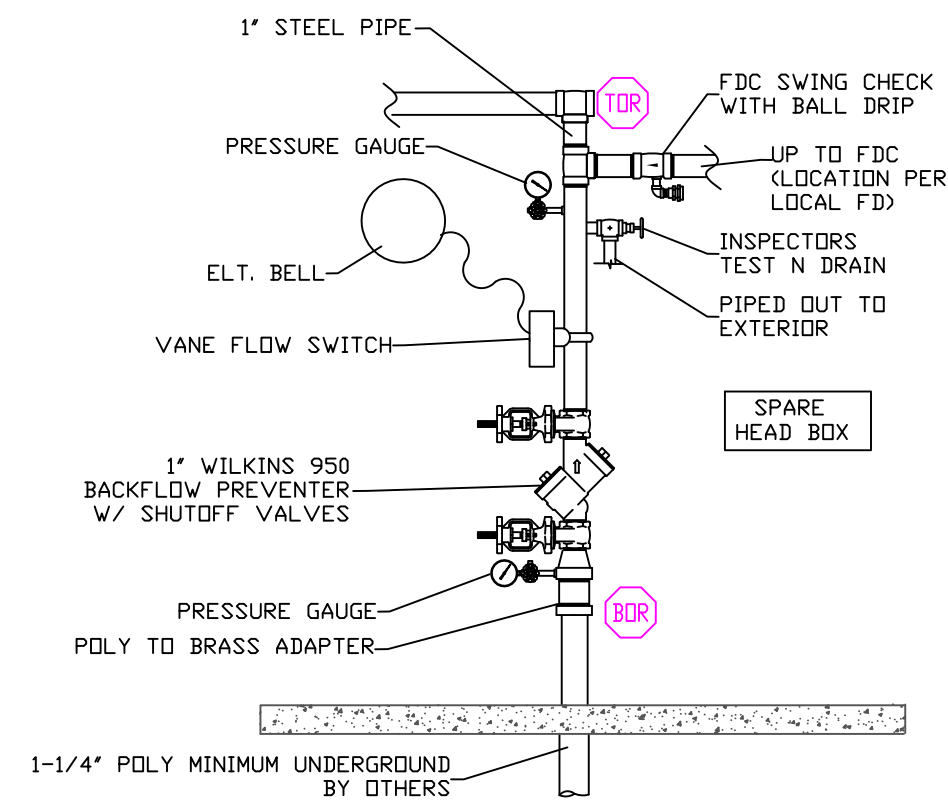
PROJECT INFORMATION:
SCOPE:
 The fire protection project consists of installing a wet sprinkler system in this 3 unit apartment at 77 Williams St. Portland.

WATER SUPPLY:
 This is a wet sprinkler system supplied by a 1-1/4" poly line connected to a city water supply. A 2-1/2" fire dept connection will be installed for use by the fire dept.

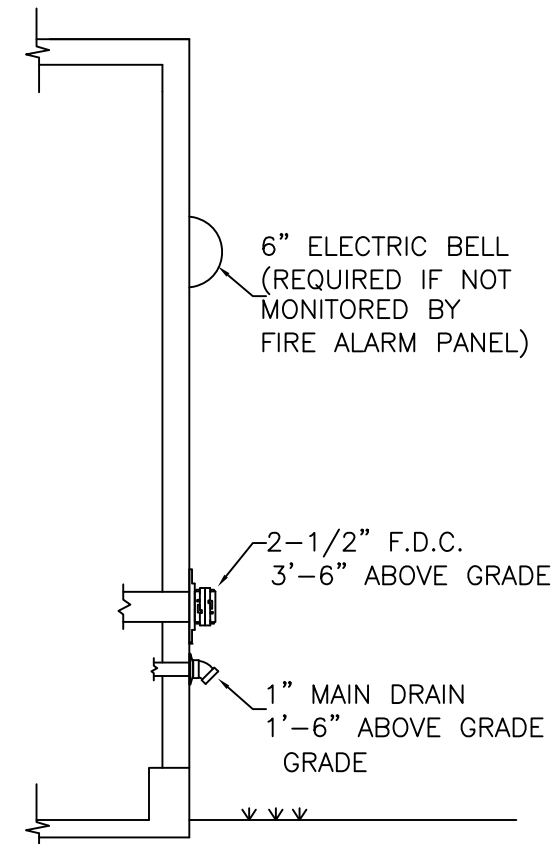
CONSTRUCTION TYPE:
 Construction type is "wood construction with gypsum wall board"

CODE REFERENCES:
 NFPA 13R 2016 ed.

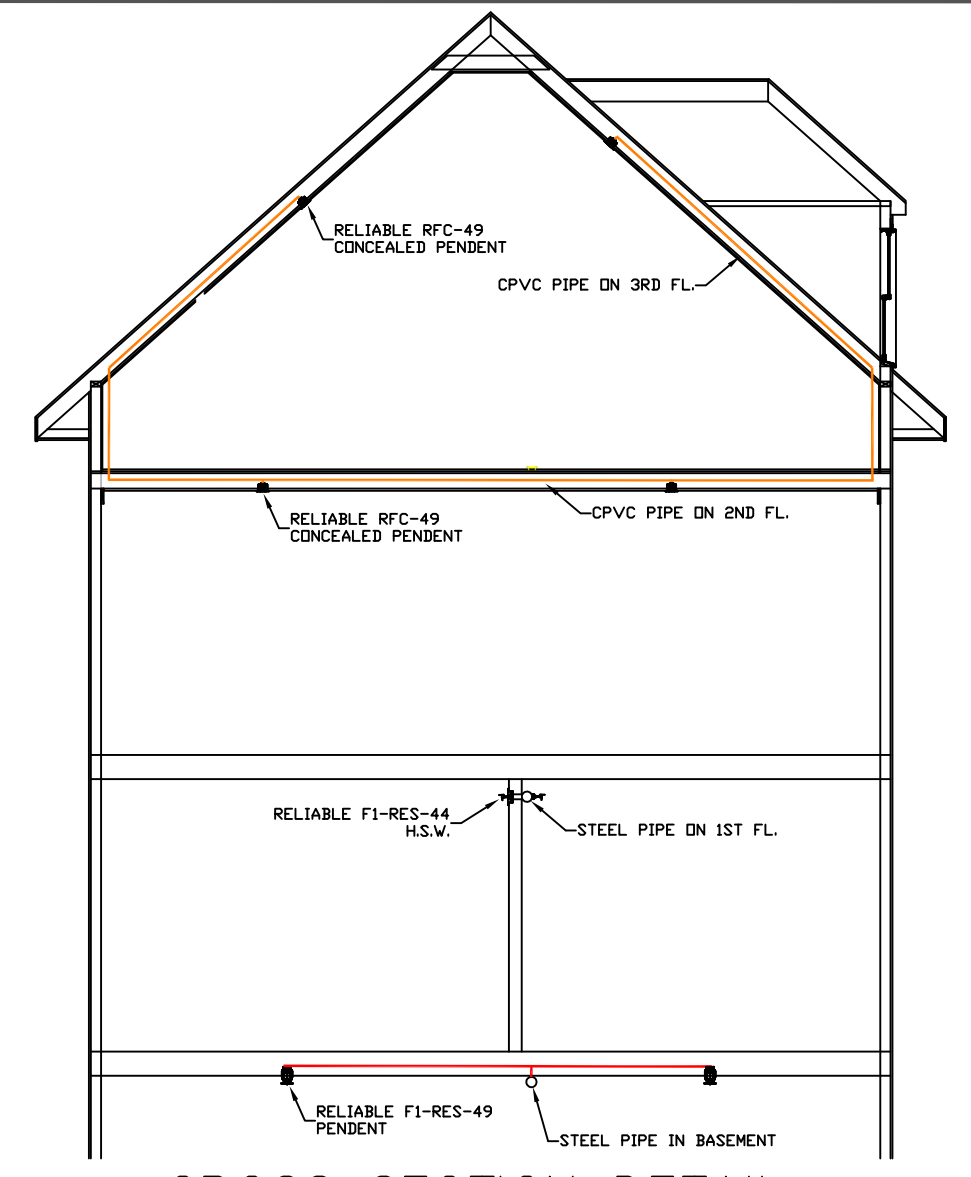
SPRINKLER SYSTEM NOTES
 * DESIGN AND INSTALLATION SHALL CONFORM TO N.F.P.A. #13R (2016) & LOCAL FIRE AND BLDG. DEPTS.
 * HANGER INSTALLATION AND SPACING SHALL BE IN ACCORDANCE WITH N.F.P.A. #13
 * FIELD FOREMAN TO VERIFY LOCATION OF HIGH TEMPERATURE SPRINKLERS
 * AND INSTALL HIGH TEMPERATURE SPRINKLERS IN ACCORDANCE WITH N.F.P.A. #13
 * OWNER SHALL PROVIDE ADEQUATE HEAT IN ALL AREAS ENCLOSING WET TYPE SPRINKLER PIPING TO PREVENT FREEZING AND FAILURE OF AUTOMATIC SPRINKLER SYSTEM.



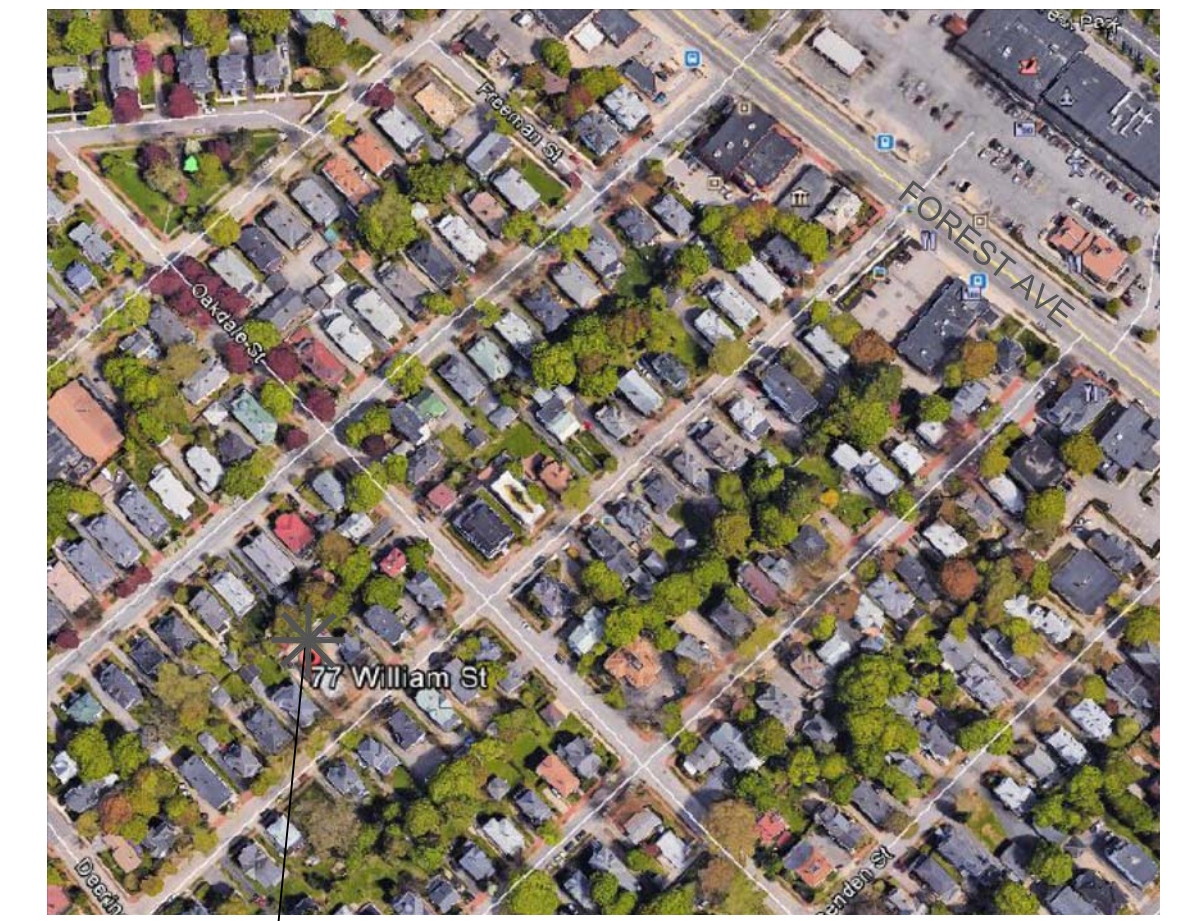
RISER DETAIL
 SCALE: N.T.S.



FDC & DRAIN DETAIL
 SCALE: N.T.S.

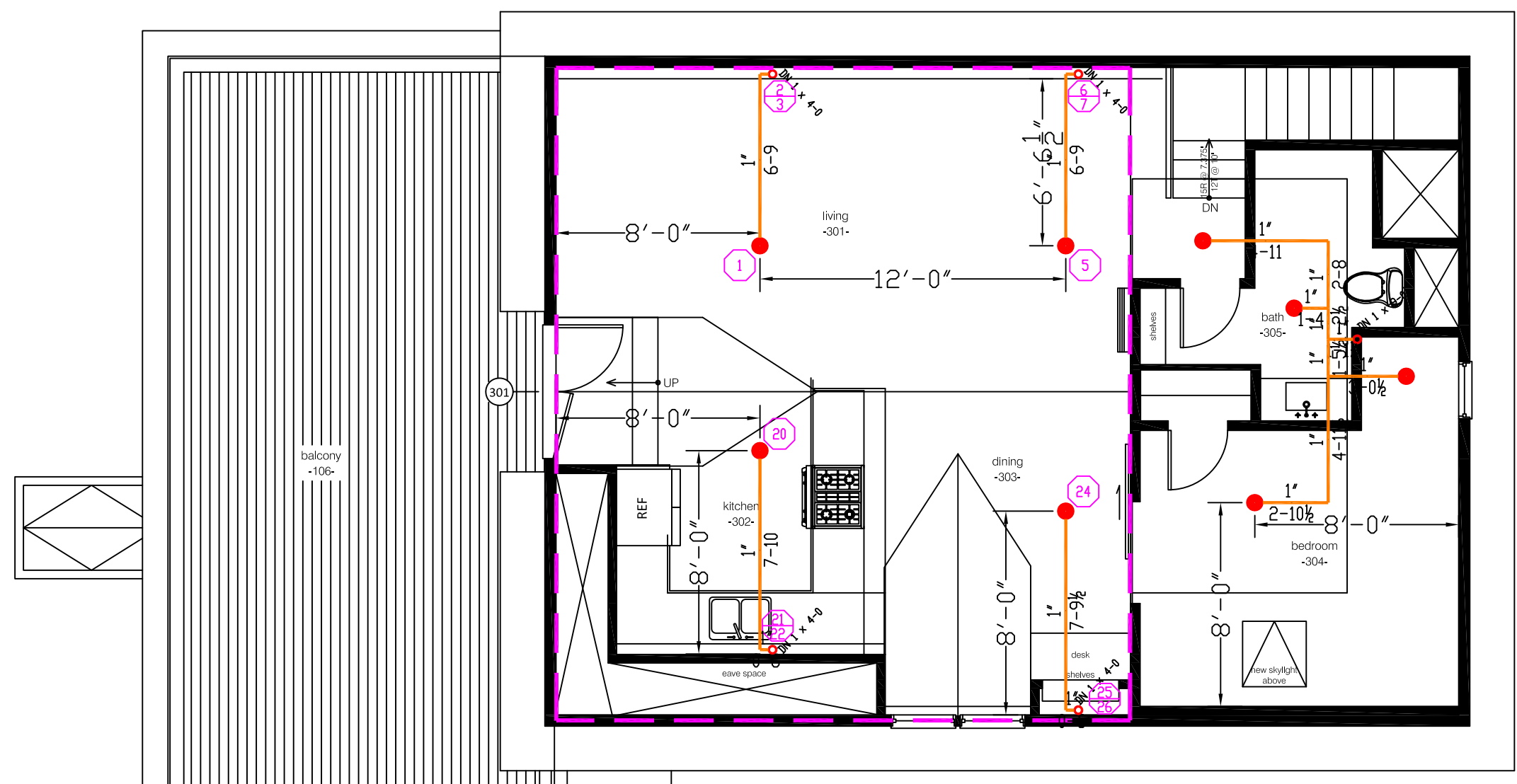


CROSS SECTION DETAIL
 SCALE: N.T.S.

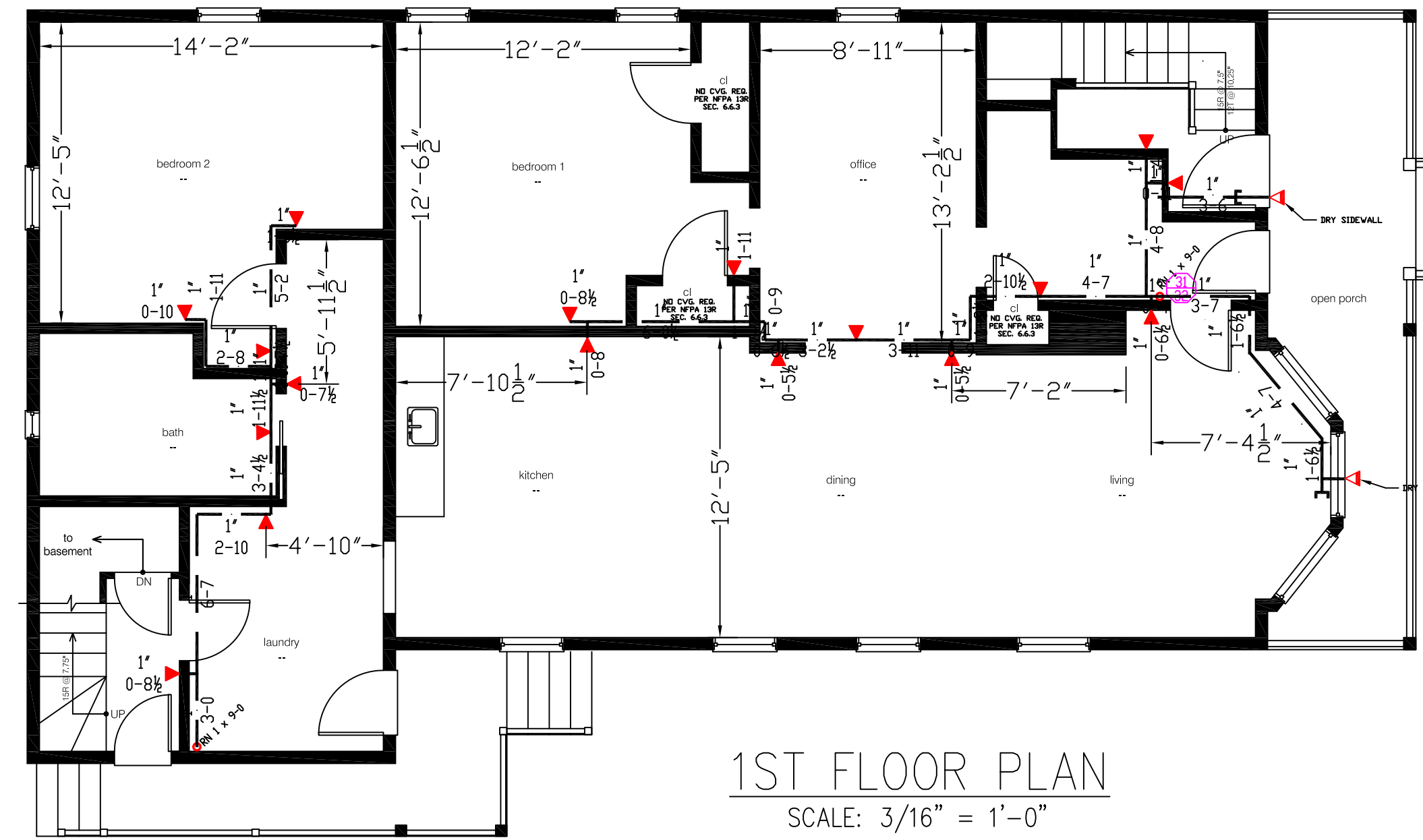


SITE PLAN
 SCALE: N.T.S.

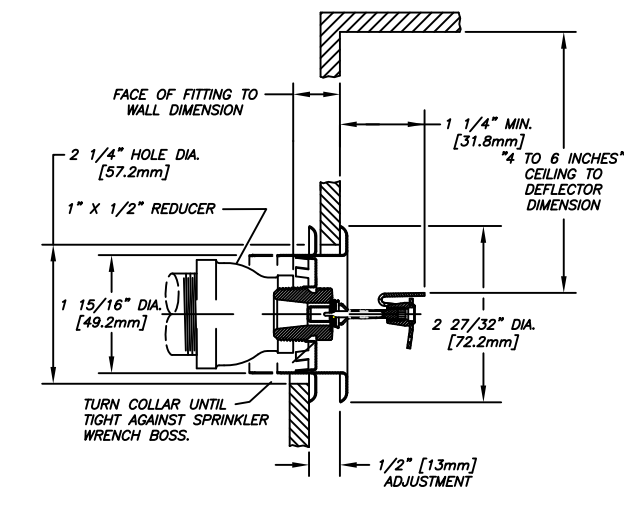
DESIGN AREA #1
HYD. DESIGN CRITERIA
 (NFPA 13R SPRINKLER SYS. WET)
 LOCATION= KITCHEN / DINING / LIVING RM.
 HAZARD CLASSIFICATION: LIGHT
 DENSITY= .05 GPM/SQ.FT.
 AREA OF OPERATION= 576 SQ. FT.
 HOSE DEMAND: 0 GPM
 NO. OF SPRINKLERS= 4 MOST DEMANDING
 BASE OF RISER= 64.2-GPM 93.8-PSI
 SAFETY MARGIN= 6.1-PSI



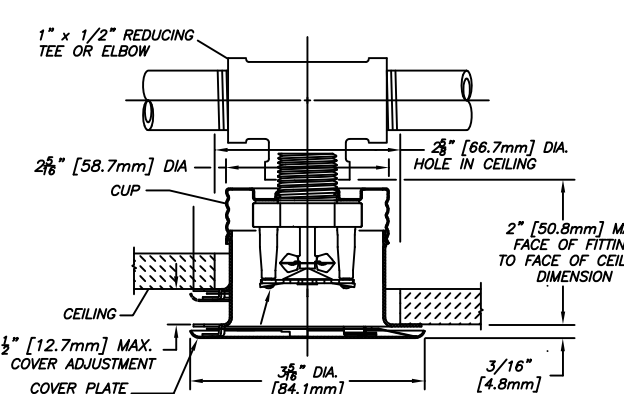
3RD FLOOR PLAN
 SCALE: 3/16" = 1'-0"
 AREA: 950 SQ. FT.



1ST FLOOR PLAN
 SCALE: 3/16" = 1'-0"
 AREA: 1400 SQ. FT.



F1-RES-44 DETAIL
 SCALE: N.T.S.



RFC-49 DETAIL
 SCALE: N.T.S.

CONTRACTOR:



278 HARRIS RD
 MINOT, ME 04258
 PHONE: 207-393-7422
 CONTRACTOR # 903

JOB SITE CONTACT INFO:

ETHOS CARPENTRY INC.
 77 WILLIAMS ST PORTLAND
 PHONE: 207-831-7654

LEGEND:

- RN PIPE RISER UP
- DN PIPE RISER DOWN
- CPVC PIPE (WET)
- STEEL PIPE (WET)
- ⊕ HYDRAULIC CALC. POINT
- ⊕ SYSTEM RISER
- HYDRAULIC DESIGN AREA

DESIGN NOTES:

* POSITION, LOCATION, SPACING, AND USE OF SPRINKLERS AND HANGERS SHALL BE IN ACCORDANCE WITH NFPA 13R 2016 ed.
 * HYDRAULIC CALCULATION PROCEDURES HAVE BEEN DONE IN ACCORDANCE WITH NFPA 13R (SEE PLANS FOR LOCATION OF REMOTE AREAS, HYDRAULIC REFERENCE POINTS, AND SYSTEM DEMANDS)
 * ALL ELECTRICAL WORK TO BE DONE BY OTHERS.
 * DIMENSIONS AND LOCATIONS GIVEN FOR SPRINKLER HEADS AND PIPE MAY VARY TO ACCOMMODATE ACTUAL FIELD CONDITIONS.
 * OWNER TO PROVIDE SUFFICIENT HEAT TO PREVENT FREEZING IN WATER FILLED SPRINKLER PIPE AND EQUIPMENT.
 * OTHER TRADES TO COORDINATE THEIR WORK WITH SPRINKLER CONTRACTOR.
 * REFER TO SPEARS CPVC PLASTIC PIPE INSTALLATION MANUAL FOR GLUE CURING TIME AND HANGER SPACING.

SPRINKLER HEAD DESCRIPTION:

RELIABLE RFC-49
 WHITE CONCEALED PENDENT
 CITY | TEMP | RCF | FACT
 16 | 165° | 4.9
 16' X 16' SPACING MAX
 8'-0" MAX FROM HEAD TO WALL

RELIABLE RES49
 WHITE PENDENTS
 CITY | TEMP | RCF | FACT
 8 | 165° | 4.9
 16' X 16' SPACING MAX
 8'-0" MAX FROM HEAD TO WALL

RELIABLE F1RES44 HSW
 HORIZONTAL SIDEWALL
 CITY | TEMP | RCF | FACT
 24 | 155° | 4.9
 16' X 16' SPACING MAX
 8'-0" MAX FROM HEAD TO WALL

RELIABLE F3RES44 DRY HSW
 HORIZONTAL SIDEWALL
 CITY | TEMP | RCF | FACT
 2 | 155° | 4.9
 16' X 16' SPACING MAX
 8'-0" MAX FROM HEAD TO WALL

TOTAL HEADS ON SHEET: 50

SCALE:
 SCALE: 3/16" = 1'-0"

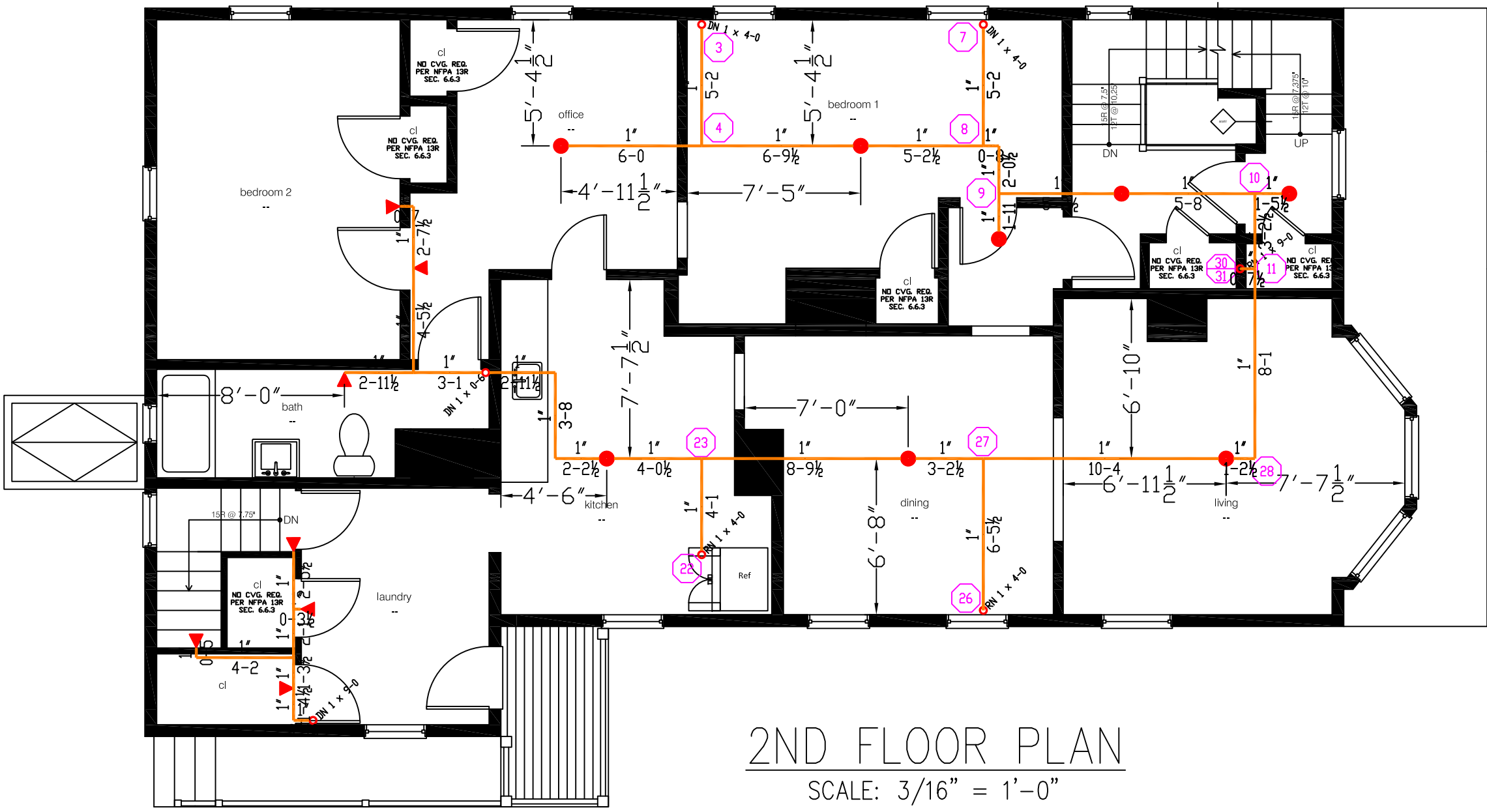
DATE: MARCH 3, 2017
 DESIGNER: TIM FORTIN
 RMS# 866
 NICET LEVEL III CERT. # 122193

LOCATION:
 77 WILLIAMS ST
 PORTLAND, ME

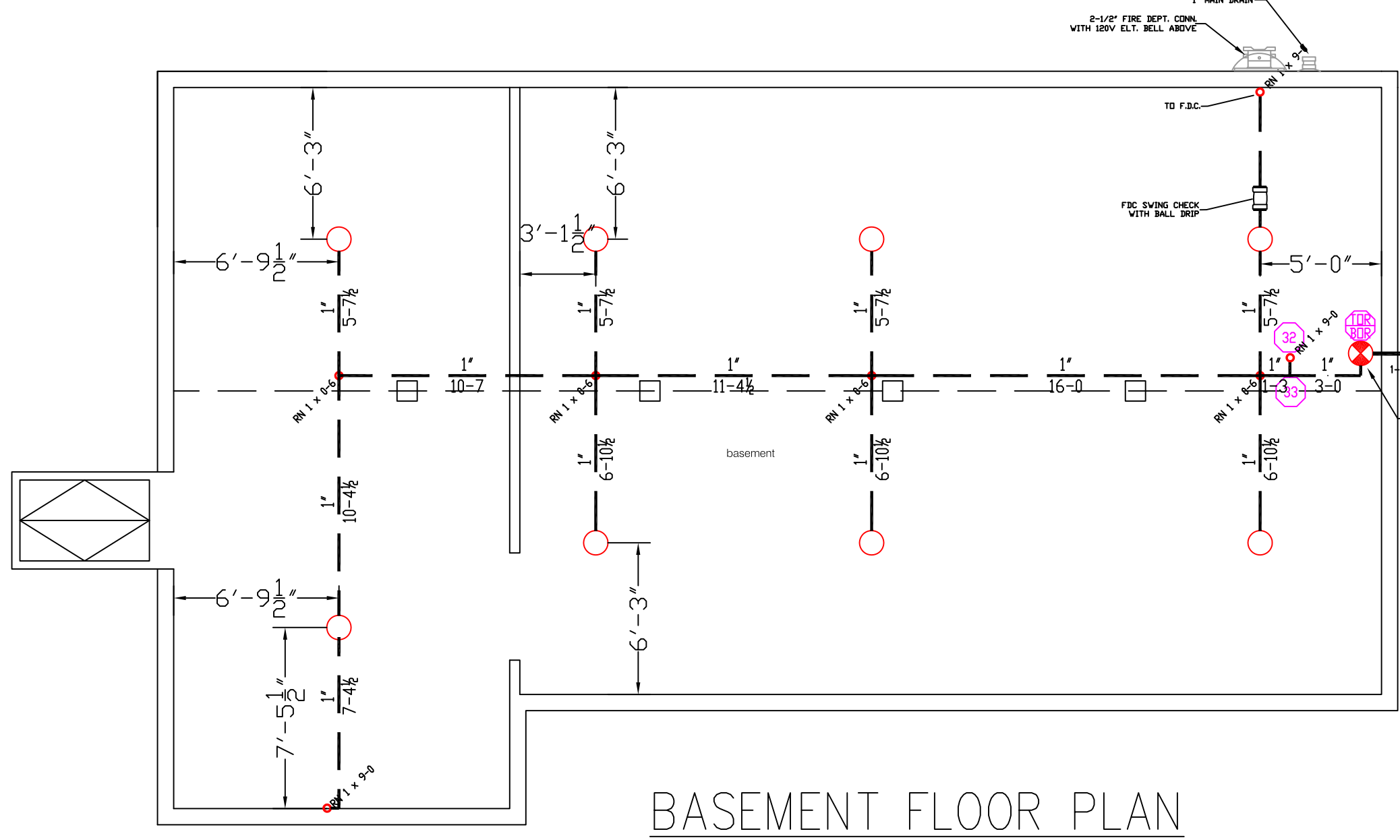
DRAWING TITLE:
 77 WILLIAMS ST
 APARTMENT BUILDING

FIRE PROTECTION PLAN
 (NFPA 13R SPRINKLER SYS.)

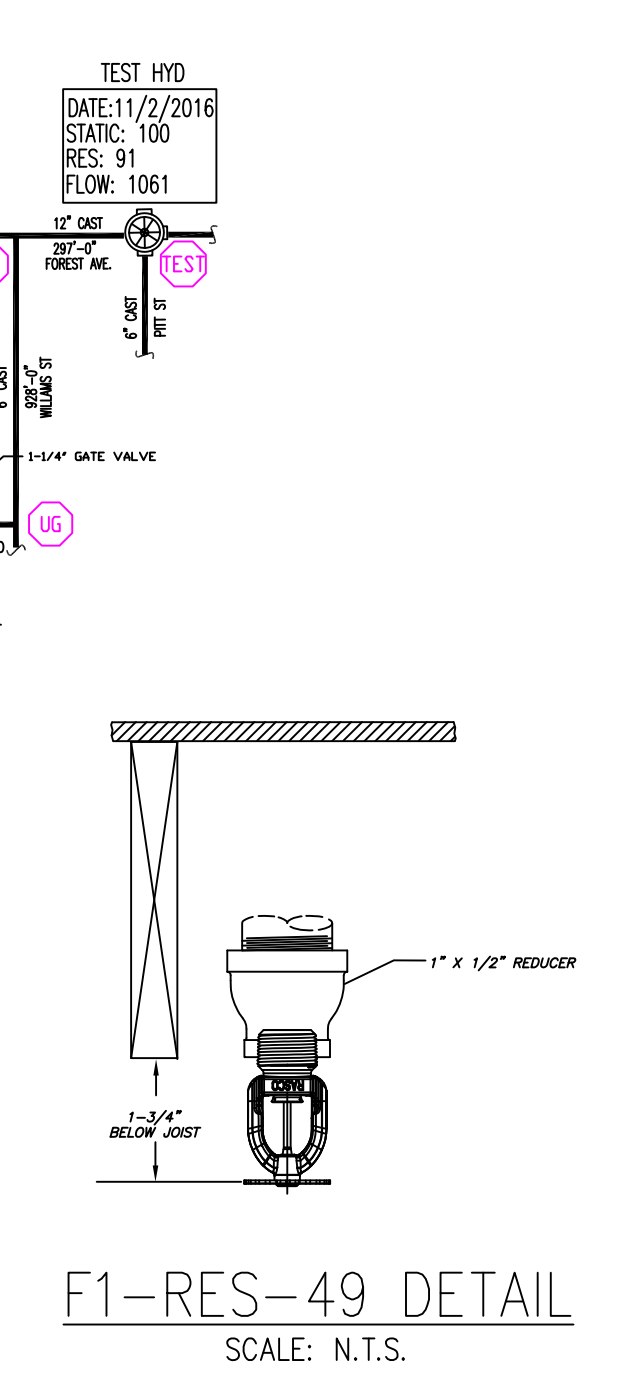
DRAWING NO.:
FP-1
 DRAWING NO. 1 OF 1



2ND FLOOR PLAN
 SCALE: 3/16" = 1'-0"
 AREA: 1400 SQ. FT.



BASEMENT FLOOR PLAN
 SCALE: 3/16" = 1'-0"
 AREA: 1400 SQ. FT.



F1-RES-49 DETAIL
 SCALE: N.T.S.