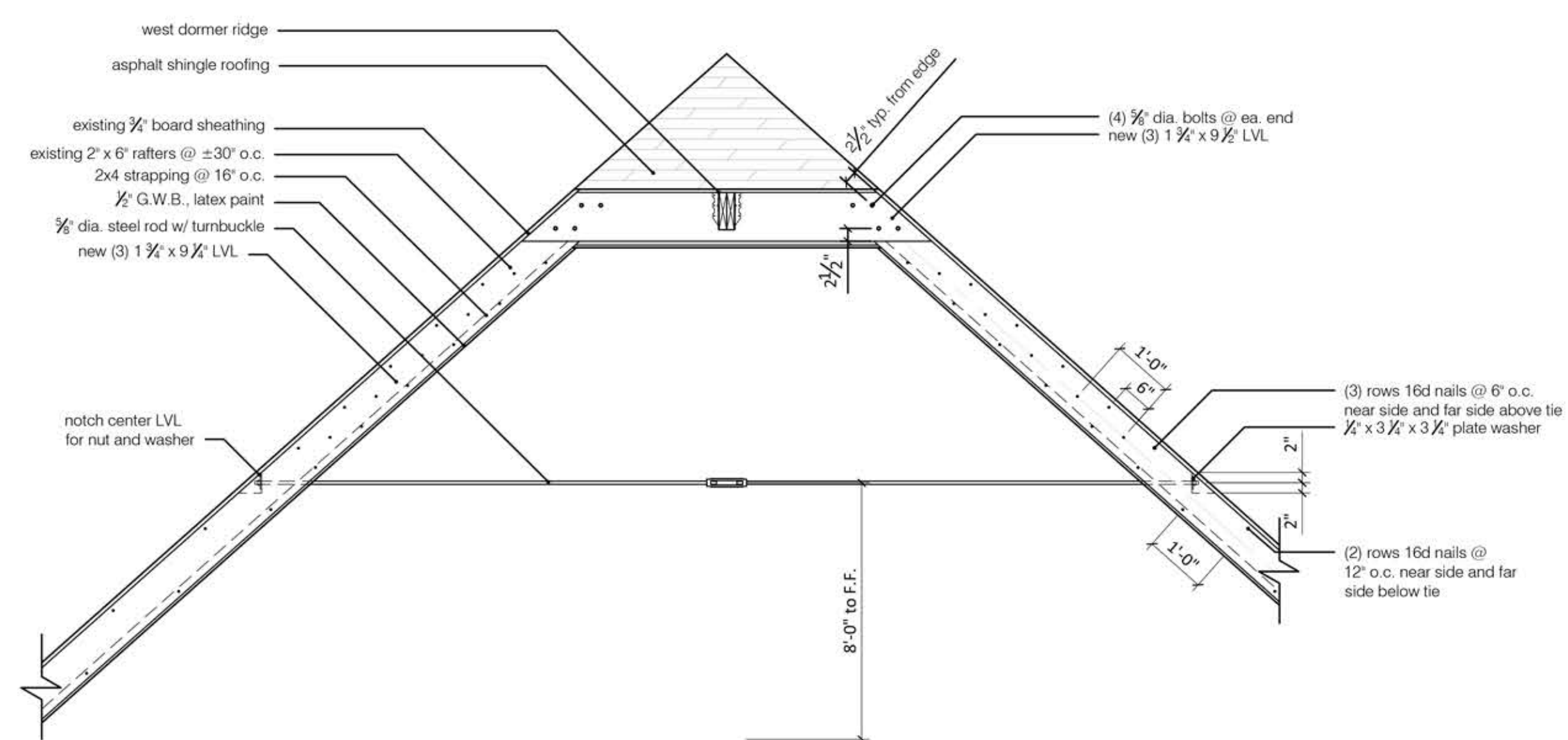
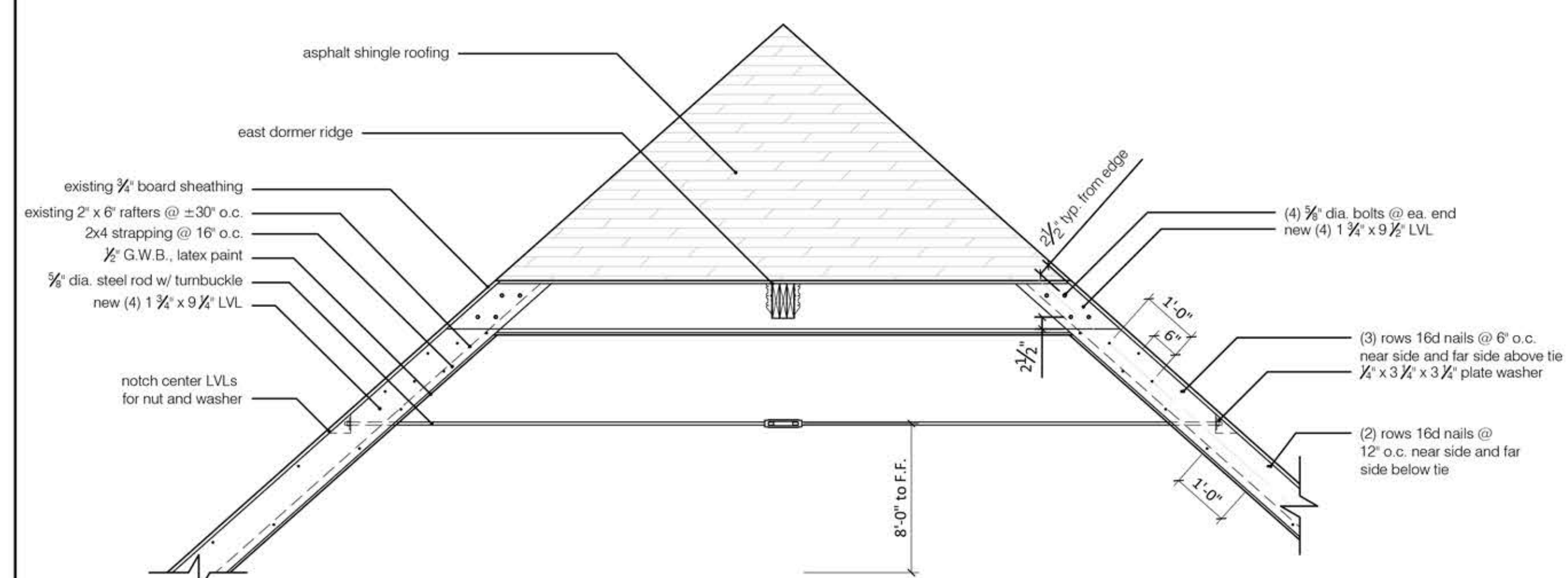


2 detail section @ truss 1
 1/2" = 1'-0"

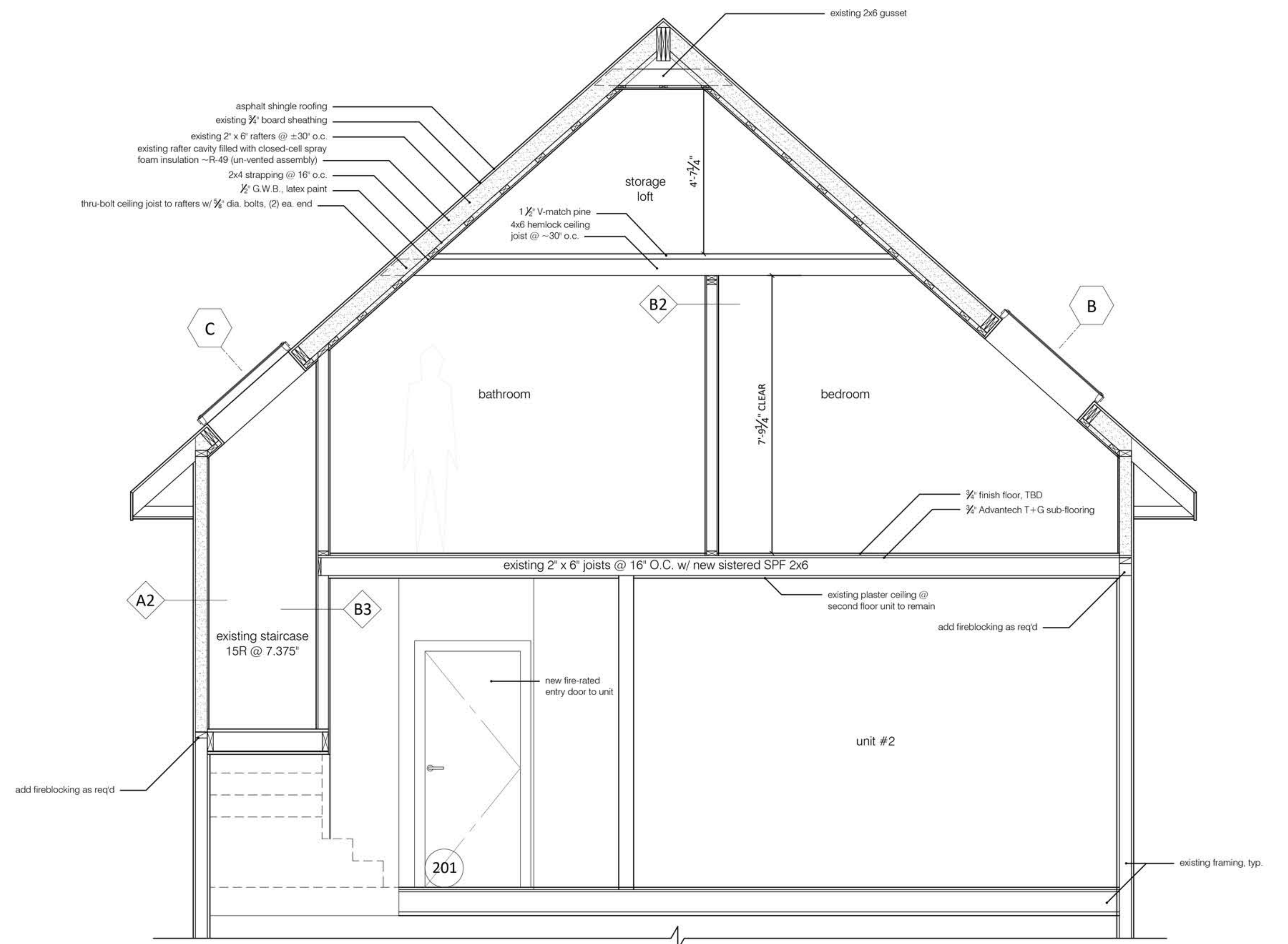


3 detail section @ truss 2
 1/2" = 1'-0"



4 detail section @ truss 3
 1/2" = 1'-0"

NOTE:
 See 2/A1-06 and 1/A3-02 for truss locations



- notes:
1. new automatic sprinkler system to code throughout building
 2. new fire/smoke alarm and detection system to code throughout building

1 building section @ bedroom
 1/2" = 1'-0"

