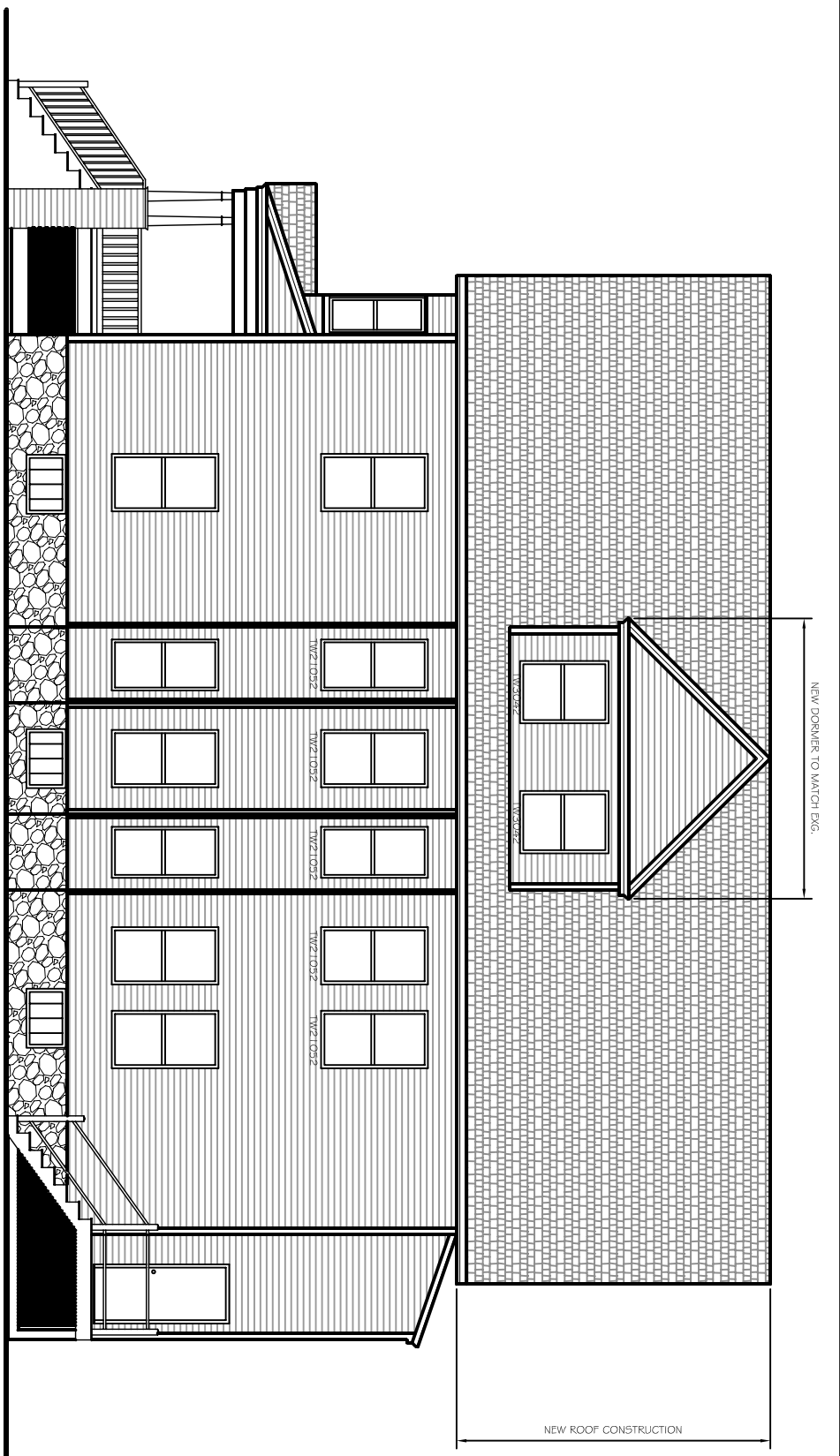
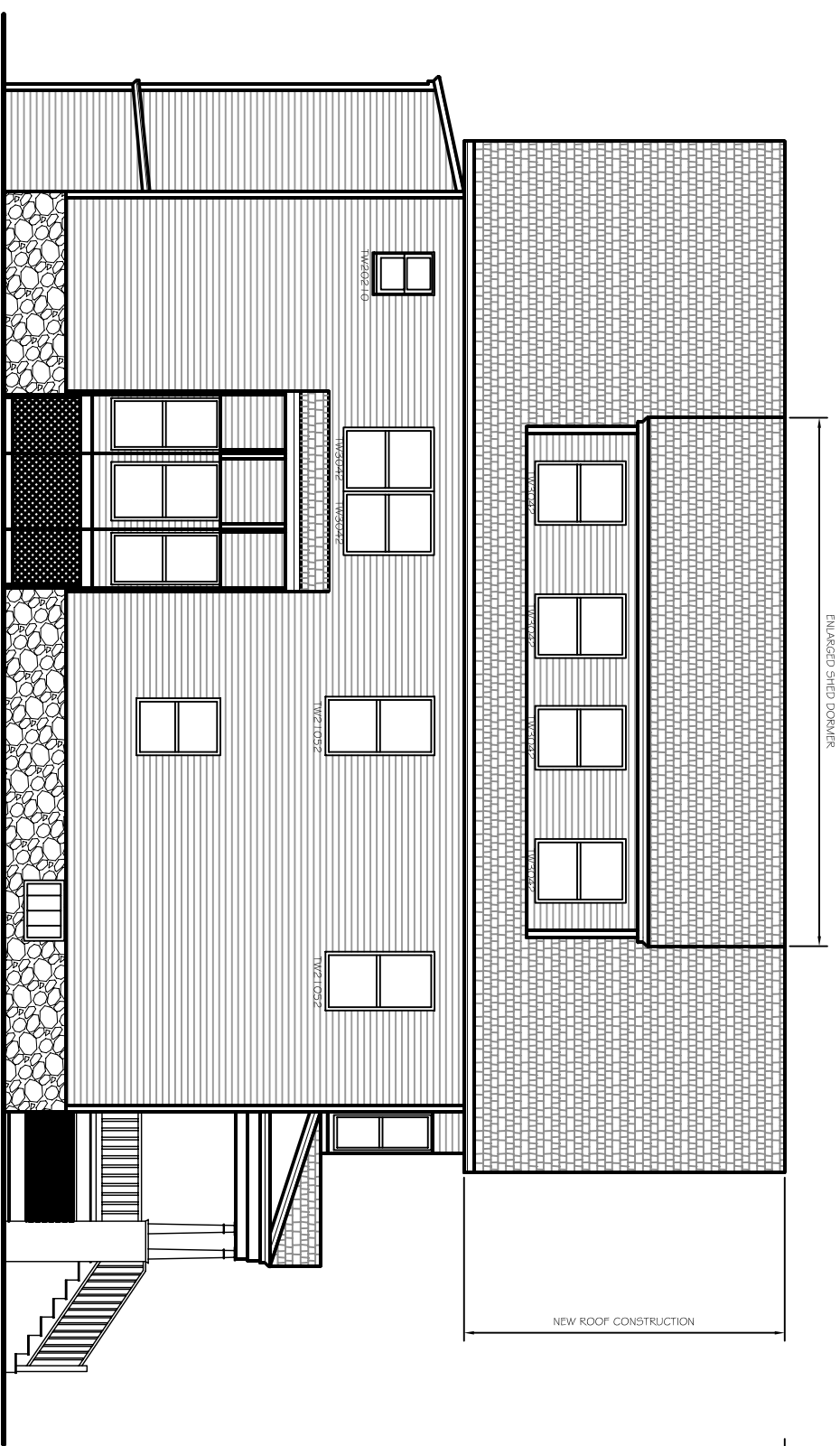


B1
PROPOSED EAST BUILDING ELEVATION
SCALE: 1/4" = 1'-0"



ROOF EL. = +133.96
3rd FLR EL. = +119.54±
2nd FLR EL. = +109.9±
1st FLR EL. = +100.0
GRADE EL. = +95.2' +/-

A1
PROPOSED WEST BUILDING ELEVATION
SCALE: 1/4" = 1'-0"



ROOF EL. = +133.96
3rd FLR EL. = +119.54±
2nd FLR EL. = +109.9±
1st FLR EL. = +100.0
GRADE EL. = +95.2' +/-

THE DRAWING, SPECIFICATIONS AND NOTATIONS ARE THE PROPERTY OF ASSOCIATED DESIGN PARTNERS, INC. NO PART OF THIS DOCUMENT SHALL BE REPRODUCED OR TRANSMITTED IN ANY FORM OR BY ANY MEANS, WITHOUT PERMISSION IN WRITING FROM ASSOCIATED DESIGN PARTNERS, INC.

ASSOCIATED DESIGN PARTNERS INC.
80 Leighton Road Office: (207) 878-1751
Falmouth, Maine 04105 Fax: (207) 878-1788
E-Mail: adp@adengineering.com

PROJECT: **BOULES RESIDENCE**
PORTLAND, MAINE
FOR: ELIAS BOLES

SHEET TITLE:
PROPOSED EAST + WEST BUILDING ELEVATIONS
ISSUED FOR PERMITTING

REVISIONS		
No	BY	DESCRIPTION

DATE: 12/15/08
SCALE: AS NOTED
DESIGN BY: ASW
DRAWN BY: RSC
FILE # 06095-ADDIUM
PROJECT NUMBER
06095
SHEET NO.
A304