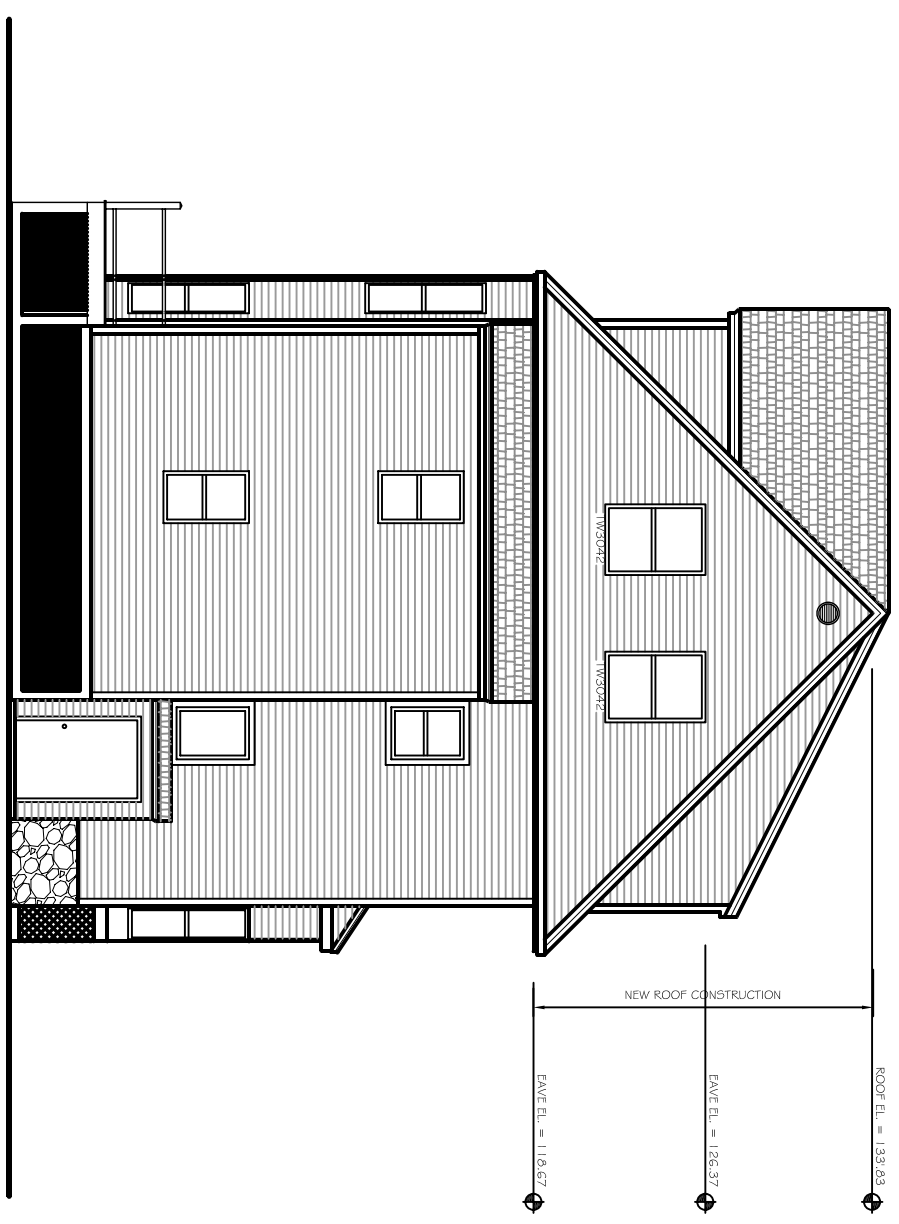


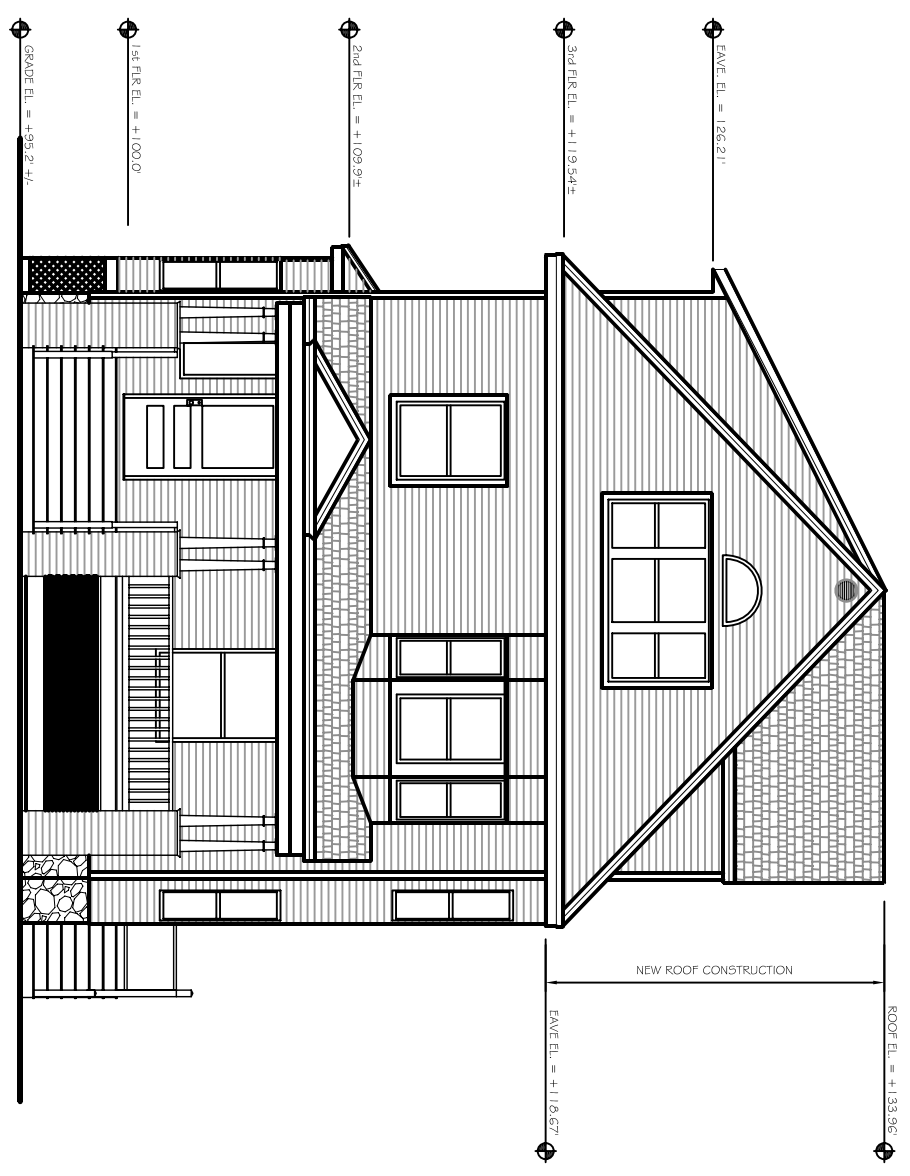
A2

PROPOSED SOUTH ELEVATION  
SCALE: 1/8" = 1'-0"



A1

PROPOSED NORTH ELEVATION  
SCALE: 1/8" = 1'-0"



REVISIONS		
No.	BY	DESCRIPTION

PROJECT: **BOULES RESIDENCE**  
**PORTLAND, MAINE**  
 FOR: ELIAS BOLES

SHEET TITLE:  
**PROPOSED NORTH + SOUTH BLDG ELEVATIONS**  
**ISSUED FOR PERMITTING**

THE ENGINEER, ARCHITECT AND DESIGNER HEREBY ASSURES THAT THE PROJECTS, SPECIFICATIONS, CONTRACTS, PERMITS, AND OTHER USES OF THIS DOCUMENT SHALL BE WITHIN THE SCOPE OF THE PROFESSIONAL ENGINEERING, ARCHITECTURAL, AND DESIGN SERVICES PROVIDED BY ASSOCIATED DESIGN PARTNERS INC.

**ASSOCIATED DESIGN PARTNERS INC.**

80 Leighton Road  
 Falmouth, Maine 04105

Office: (207) 878-1751  
 Fax: (207) 878-1788  
 E-Mail: [adp@adpengineering.com](mailto:adp@adpengineering.com)

DATE: 12/15/08  
 SCALE: AS NOTED  
 DESIGN BY: ASW  
 DRAWN BY: RSC  
 FILE # 06095-ADT108  
 PROJECT NUMBER:  
**06095**  
 SHEET NO.:  
**A303**